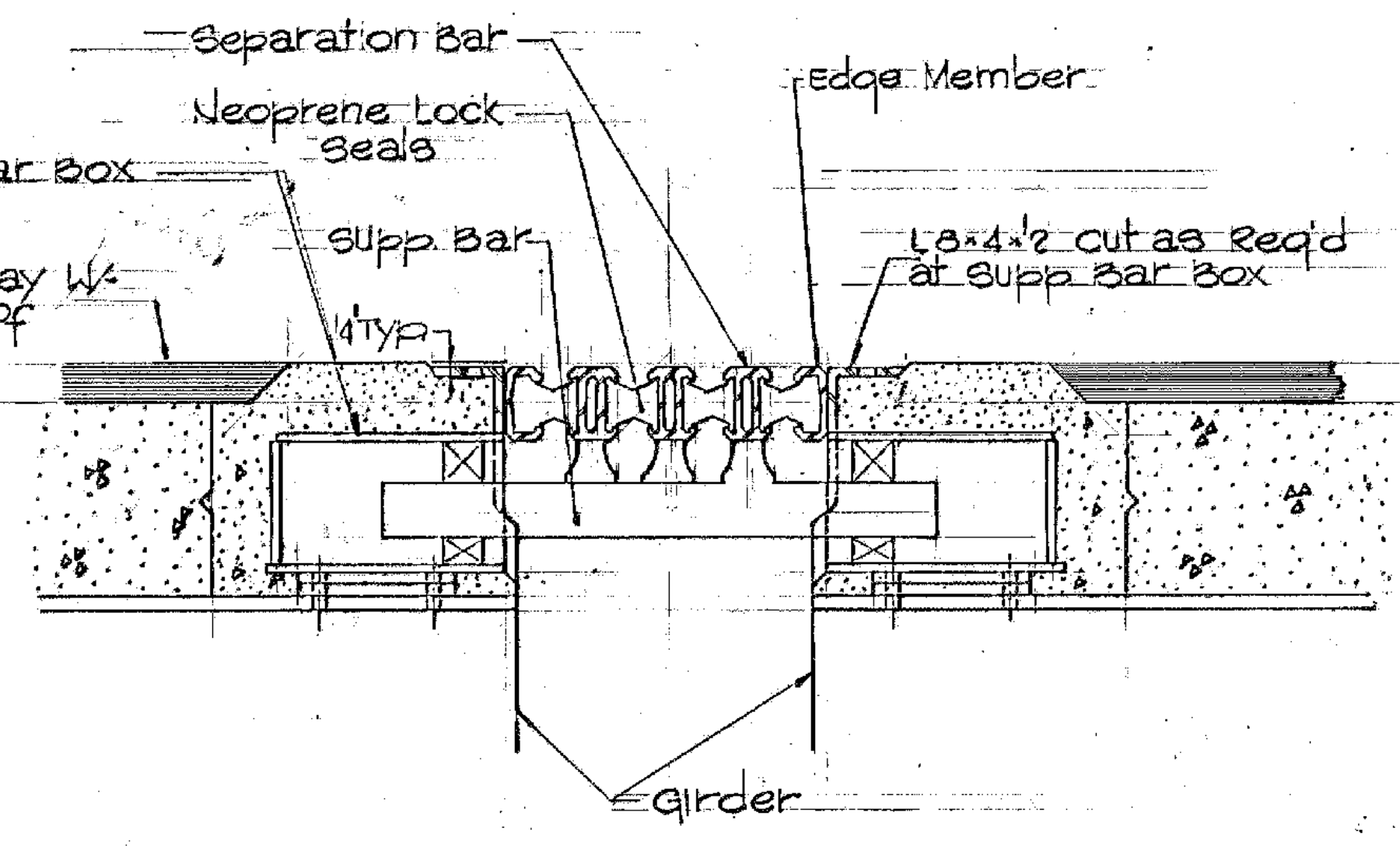
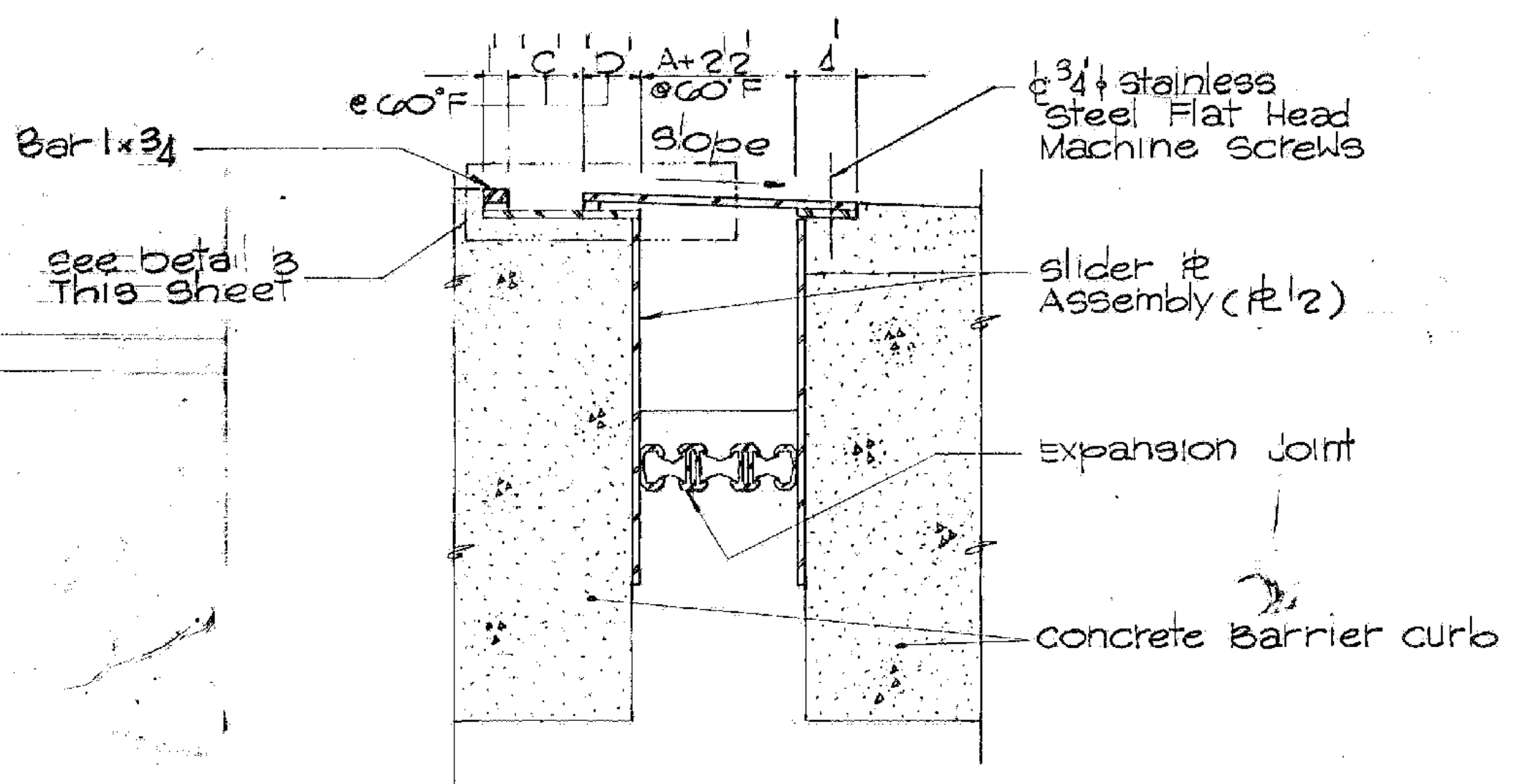


SECTION D-D
1/2" = 1'-0"

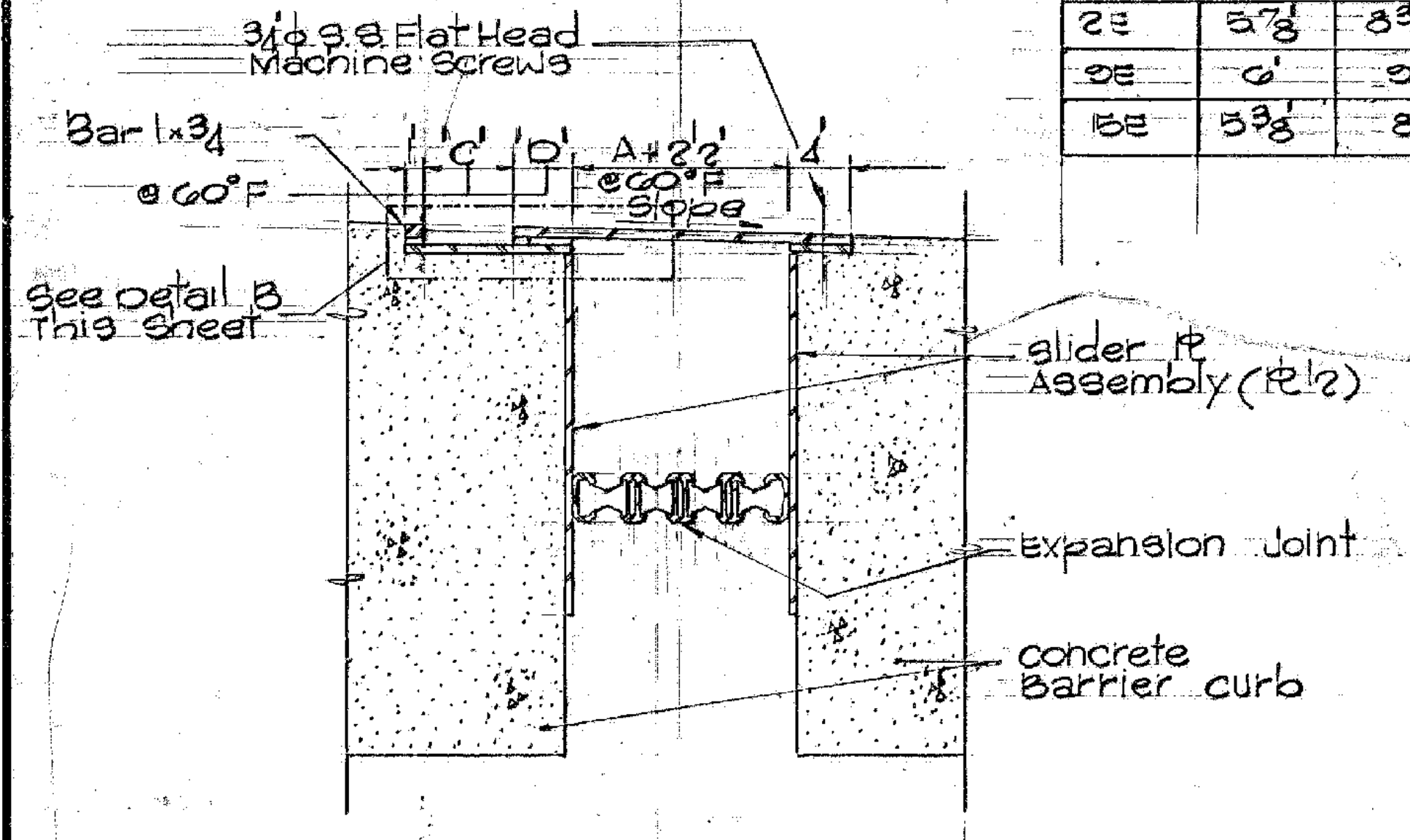


SECTION E-E
1/2" = 1'-0"

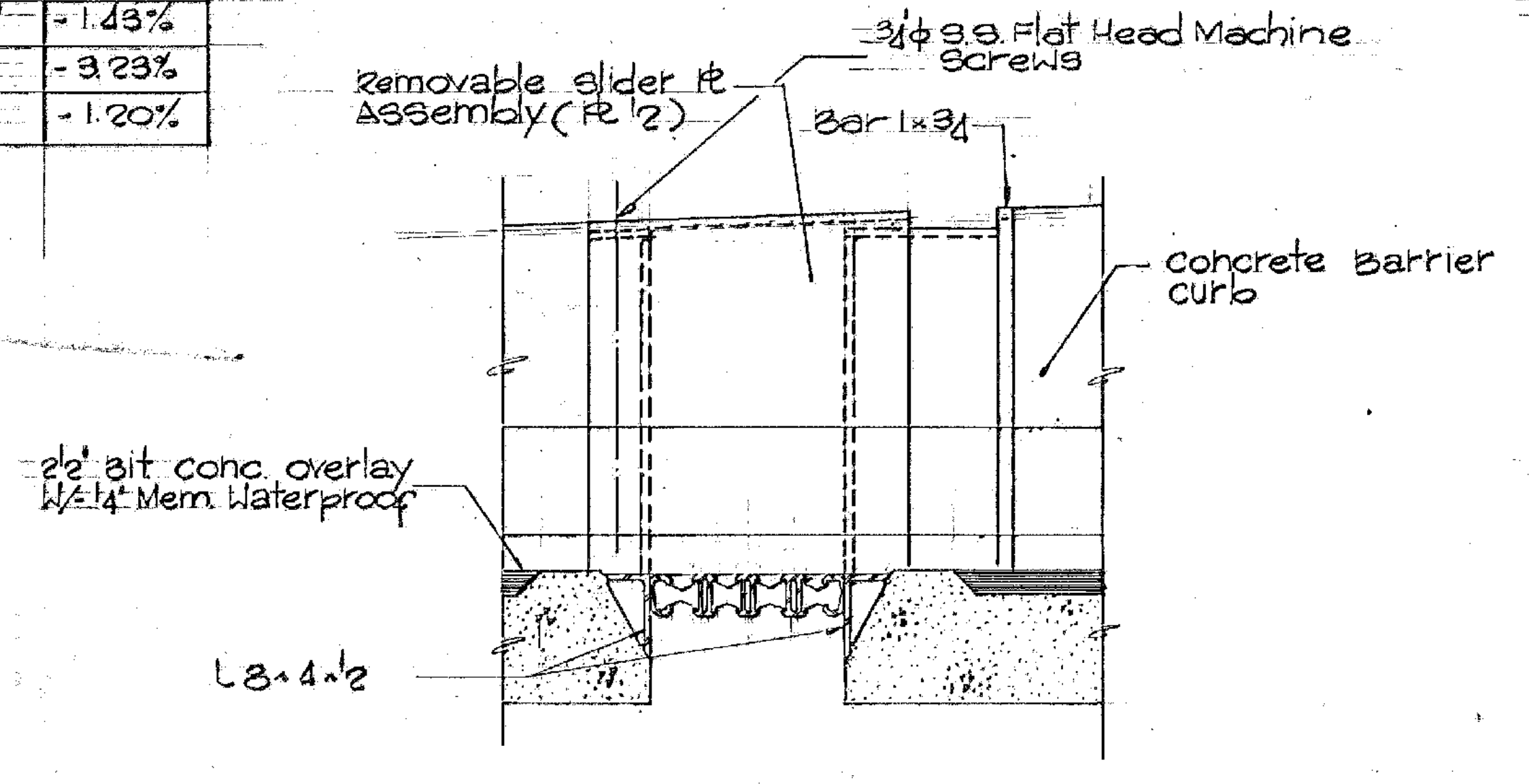


SECTION F-F
1/2" = 1'-0"

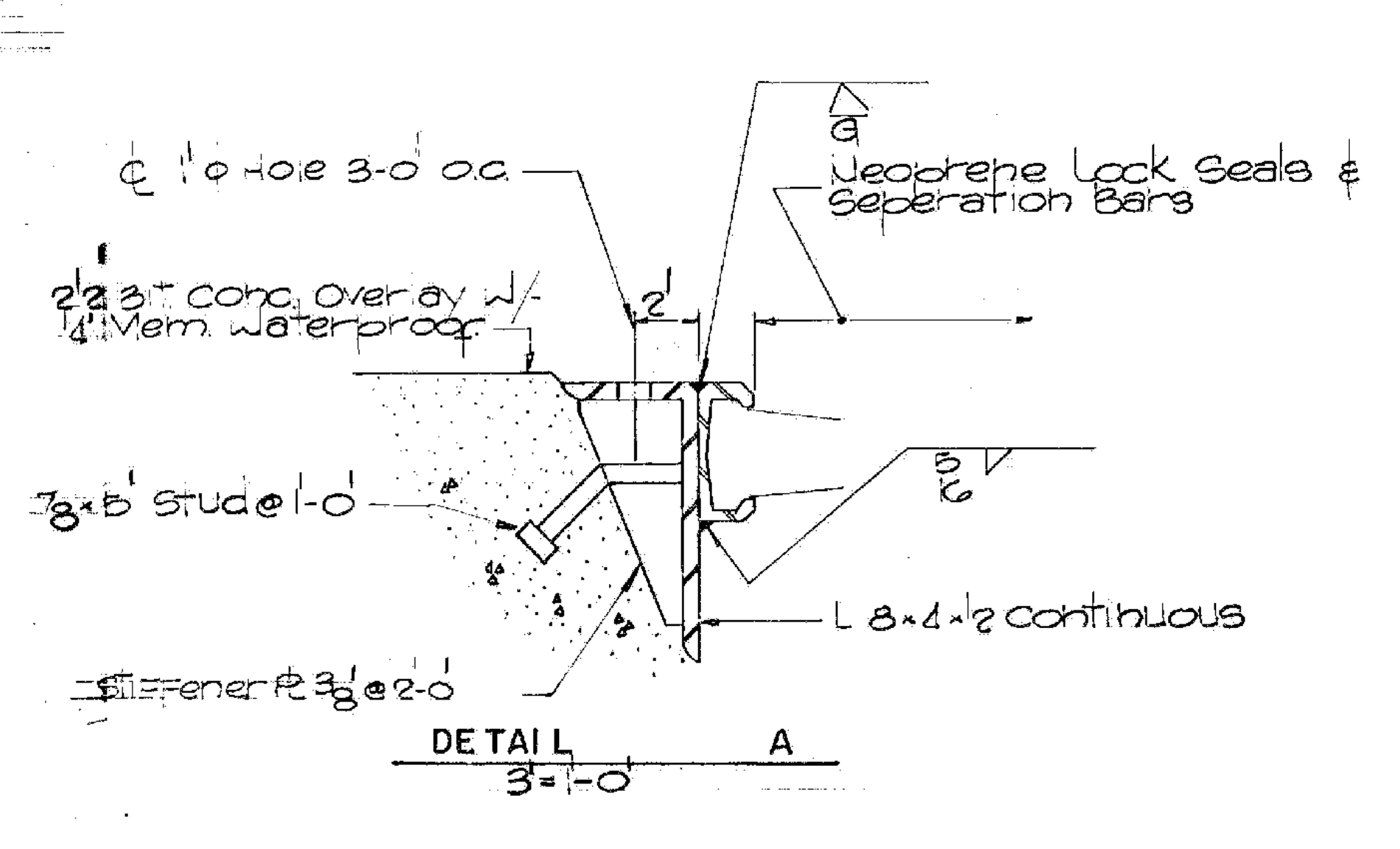
Pier	'C'	'D'	Slope
2W	53 1/2'	82 3/8'	+1.55%
2W	54'	73 1/2'	+2.34%
2E	57 3/8'	83 1/2'	-1.43%
2E	0'	0'	-3.23%
15E	53 3/8'	8'	-1.20%



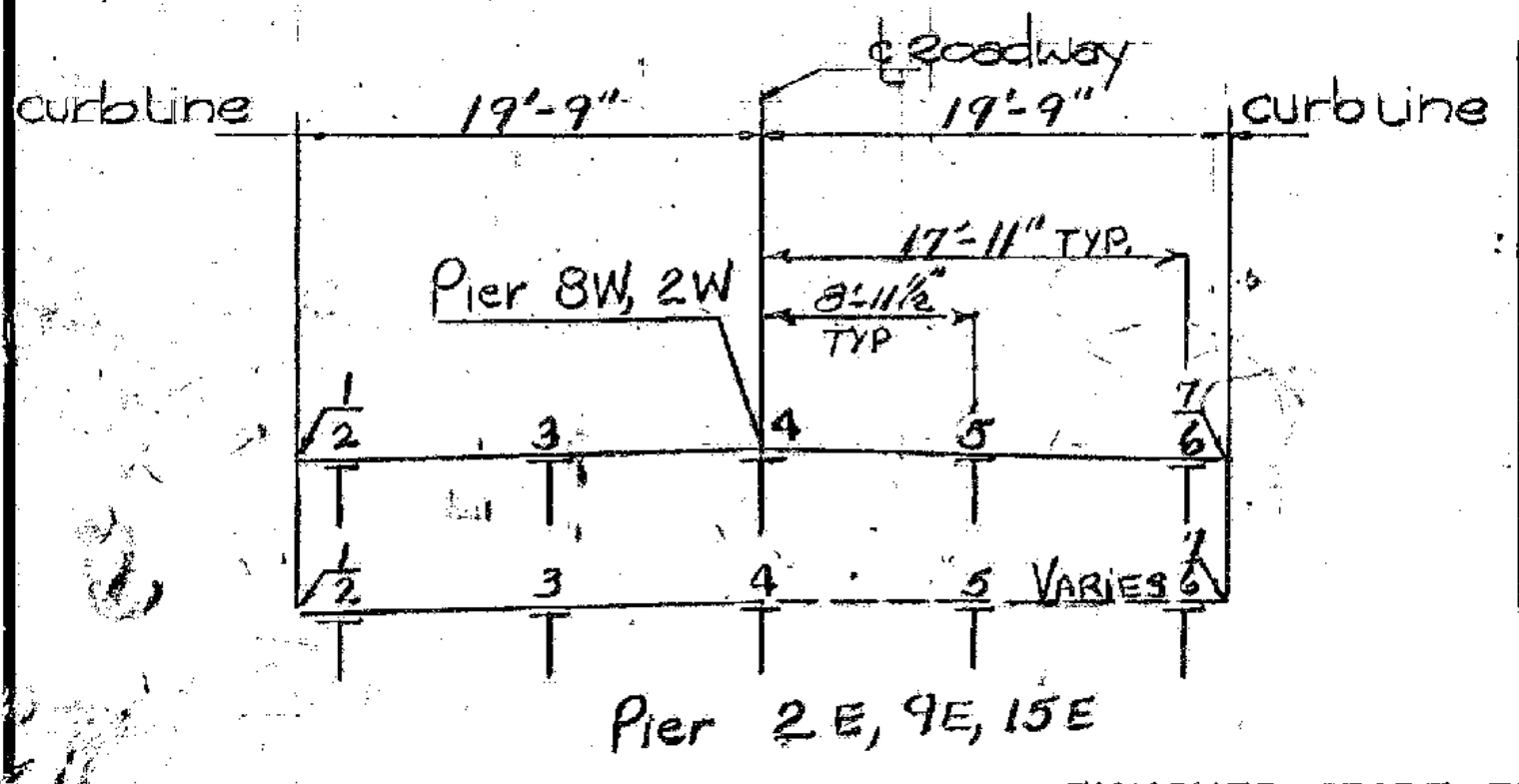
SECTION G-G
3/4" = 1'-0"



SECTION H-H
3/4" = 1'-0"

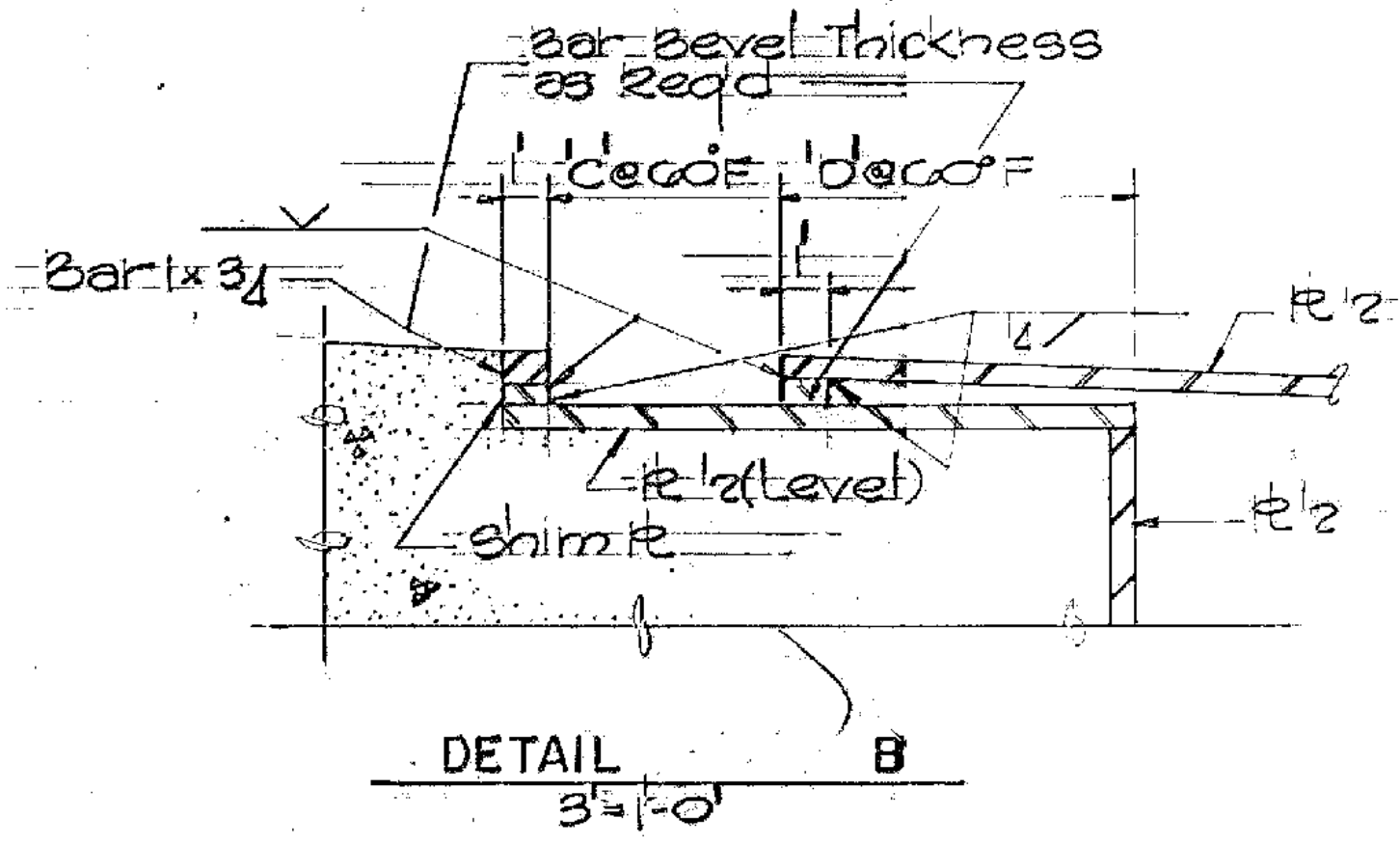


DETAIL A
3" = 1'-0"



FINISHED GRADE ELEVATIONS @ OF ROADWAY EXPANSION JOINT

Pier	1	2	3	4	5	6	7
2W	125.89	125.93	126.11	126.30	126.11	125.93	125.89
2W	160.01	160.05	160.23	160.42	160.23	160.05	160.01
2E	162.89	162.93	163.11	163.30	163.30	163.29	163.29
2E	131.43	131.47	131.65	131.84	132.03	132.21	132.25
15E	116.32	116.36	116.54	116.73	116.74	116.75	116.76



DETAIL B
3" = 1'-0"

ALBURGH-ROUSES POINT
BHF MEMB(24)
SHEET 47 OF 50
FOR REFERENCE ONLY

**STATE OF VERMONT
AGENCY OF TRANSPORTATION**

TOWN OF ROUSES POINT NY- ALBURG VT. Bridge No. 1
Log Sta. 0+00
HIGHWAY NO. ROUTE 27 Surv. Sta.

**ROADWAY EXPANSION DEVICE DETAILS
(STEEL ALTERNATE)**

Designed by KAC Drawn by W.G.
Checked by SM date 11/5/84 Bridge Design Supervisor C.J.M./S.M. date 11/5/84

PROJECT NO. BRF 028-1(11)
ROUSES POINT BRIDGE REPLACEMENT PROJECT NO.
Bridge Sheet No. S385 Sheet of

HNTB
HOWARD NEEDLES TAMMEN & BERGENDOFF