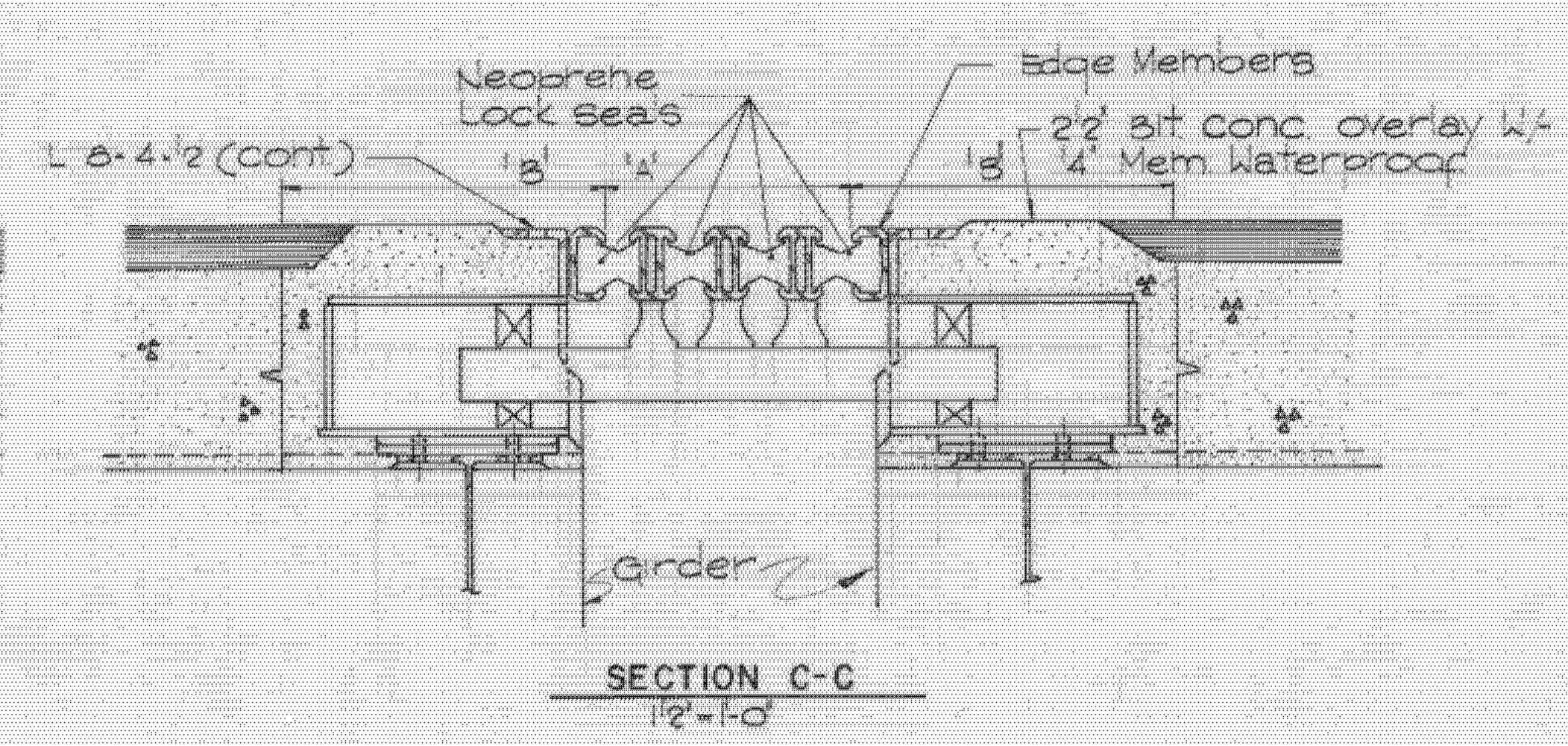
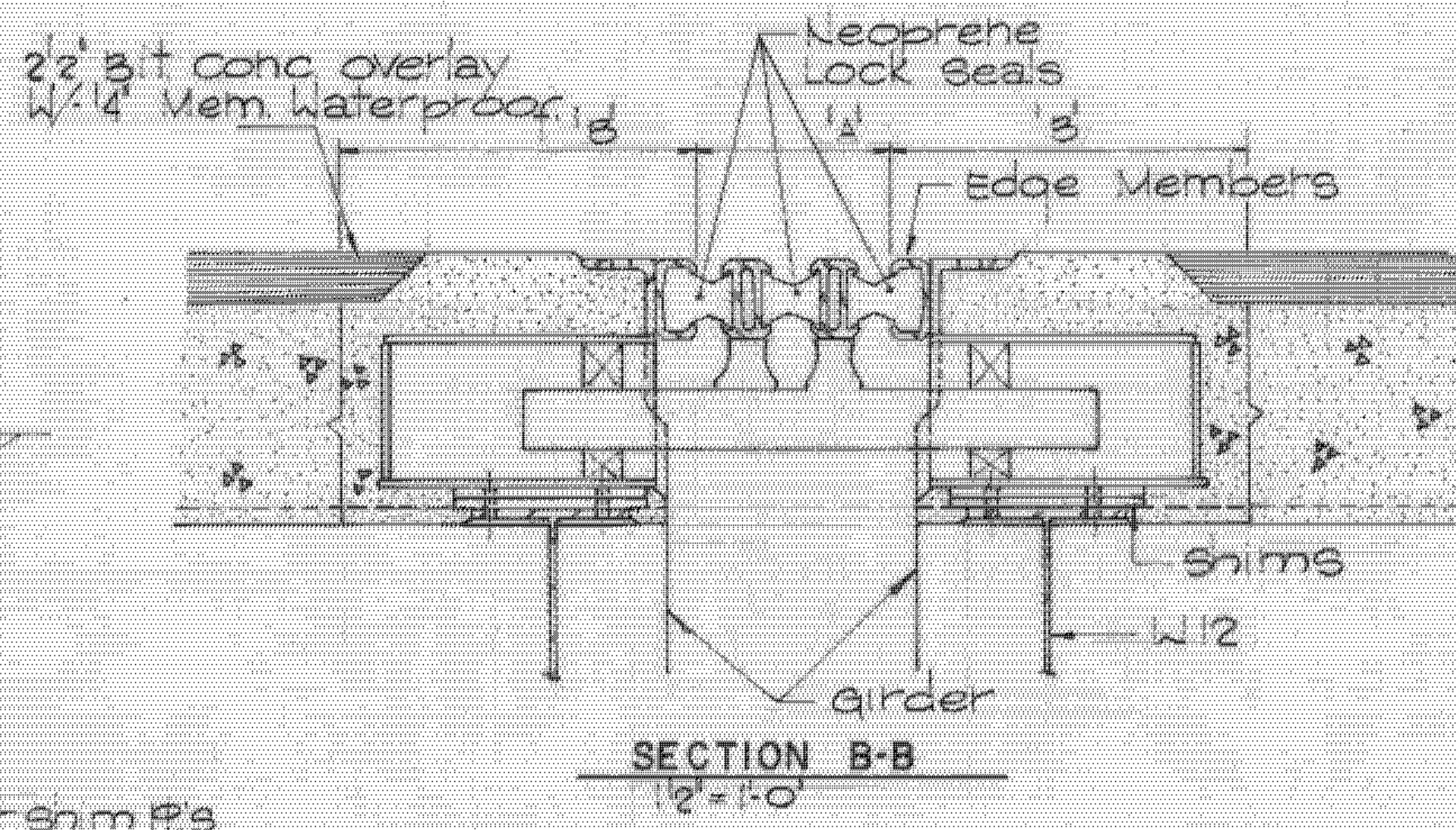
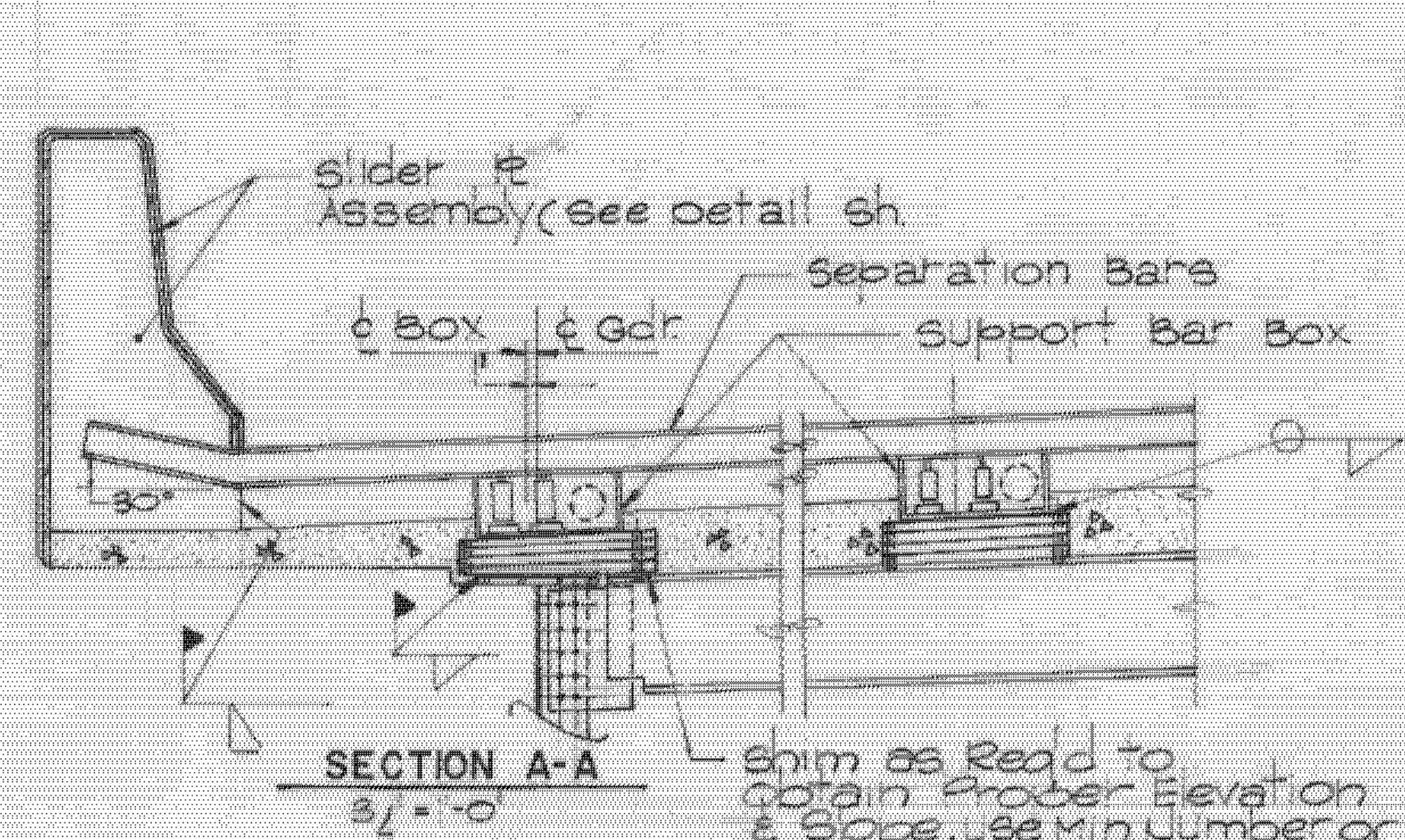


ITEM ELIMINATED AND  
REMOVED W/ 3 SEAL  
EXPANSION JOINT



**NOTES:**

- The Expansion device shall be a pre-fabricated modular assembly w/ multiple support bars & separator bars as shown in the Plans.
- The joint system shall be for H.S. 25 (state of Vermont) Truck Loading & Impact of 30% & shall accommodate the movements shown in the Plans.
- Materials shall conform to the following: A, Extruded steel sections shall meet the requirements of ASTM A-588 B, All other steel plates, bars, & shapes shall conform to ASTM A36.
- The Manufacturer of the Expansion device system shall furnish shop drawings, which will include all material, specifications, & dimensions of the fabrication joint assembly. The drawings will also show joint setting data.
- All steel in the modular expansion joints shall be Hot-Dip galvanized or metalized in accordance with subsection 731.06 of the General Special Provisions dated April 25, 1984.

Pier	Dim A*	Dim B*
8W	1'-2"	1'-0"
2W	0'-3 1/2"	1'-0"
2E	1'-2"	1'-0"
9E	1'-2"	1'-0"
2E	0'-3 1/2"	1'-0"

\* At 60°F

ALBURGH-ROUSES POINT  
BHF MEMB(24)  
SHEET 46 OF 50  
FOR REFERENCE ONLY

**STATE OF VERMONT  
AGENCY OF TRANSPORTATION**

TOWN OF ROUSES POINT N.Y.-ALBURG VT. Bridge No. 1  
Log Sta. 0+00  
HIGHWAY NO. ROUTE 2 Surv. Sta.

**ROADWAY EXPANSION DEVICES**

(STEEL ALTERNATE)

Designed by S.M. Drawn by W.G.  
Checked by S.H.R. date 11/5/83 Bridge Design Supervisor  
C.J.M./S.M. date 11/5/84

PROJECT ROUSES POINT BRIDGE REPLACEMENT PROJECT NO. BRP 028-1(11)  
Bridge Sheet No. 5584 Sheet of

