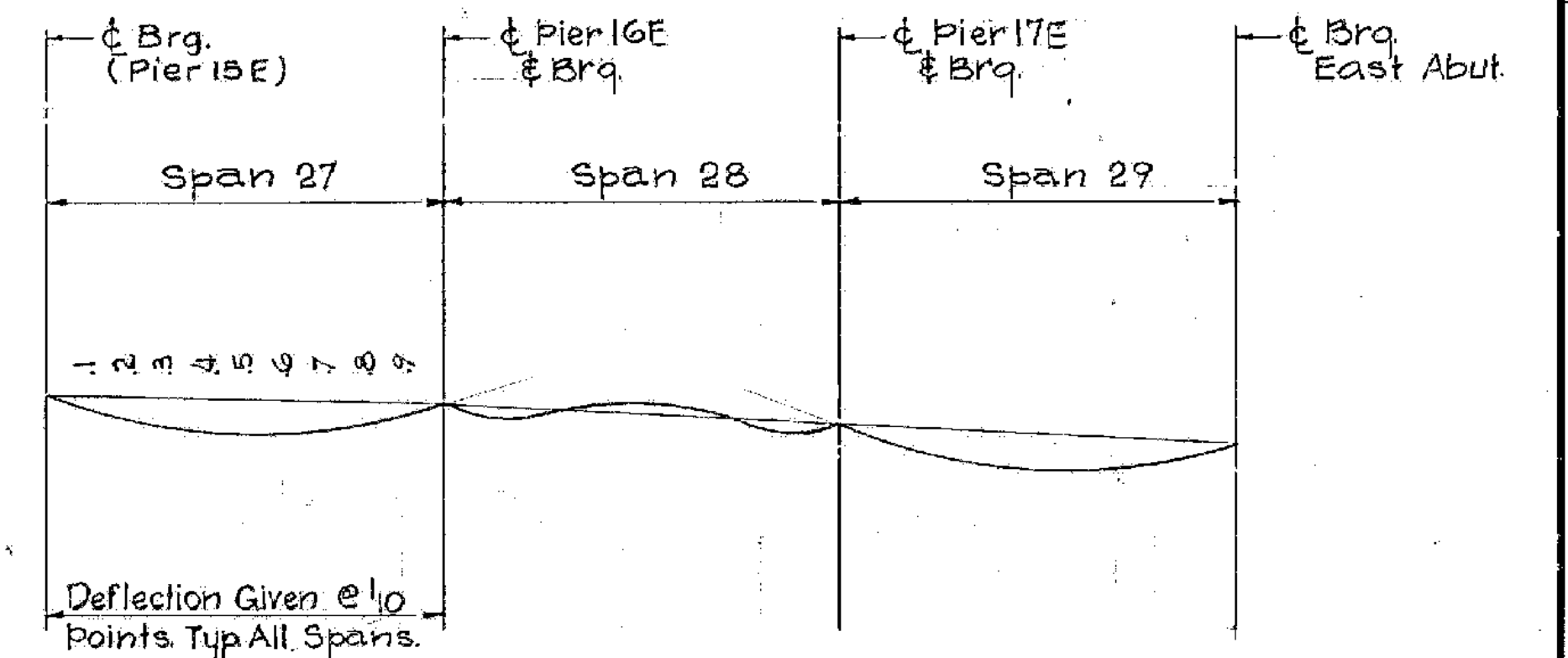
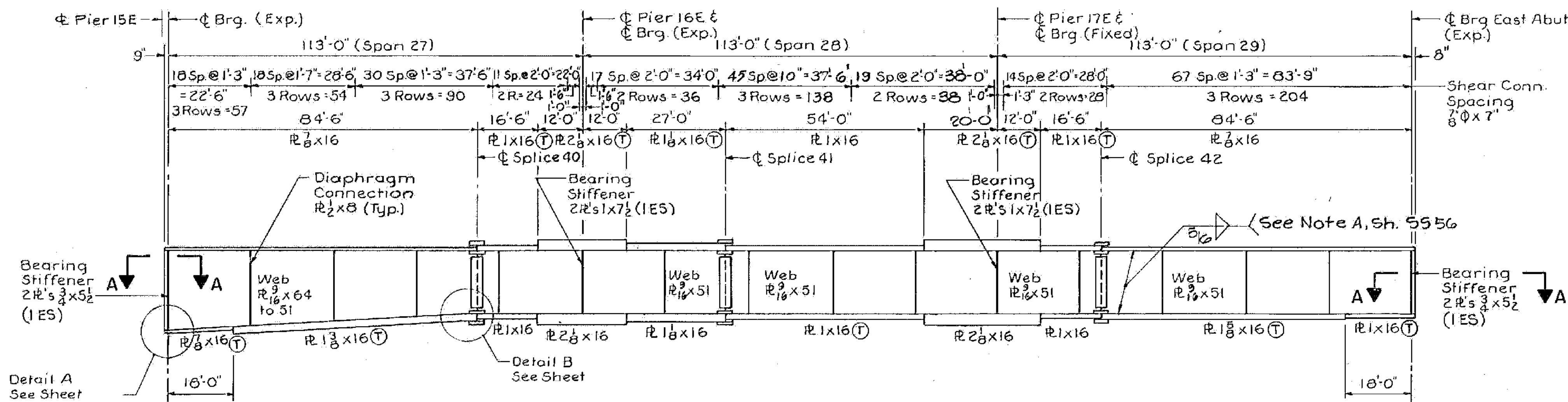
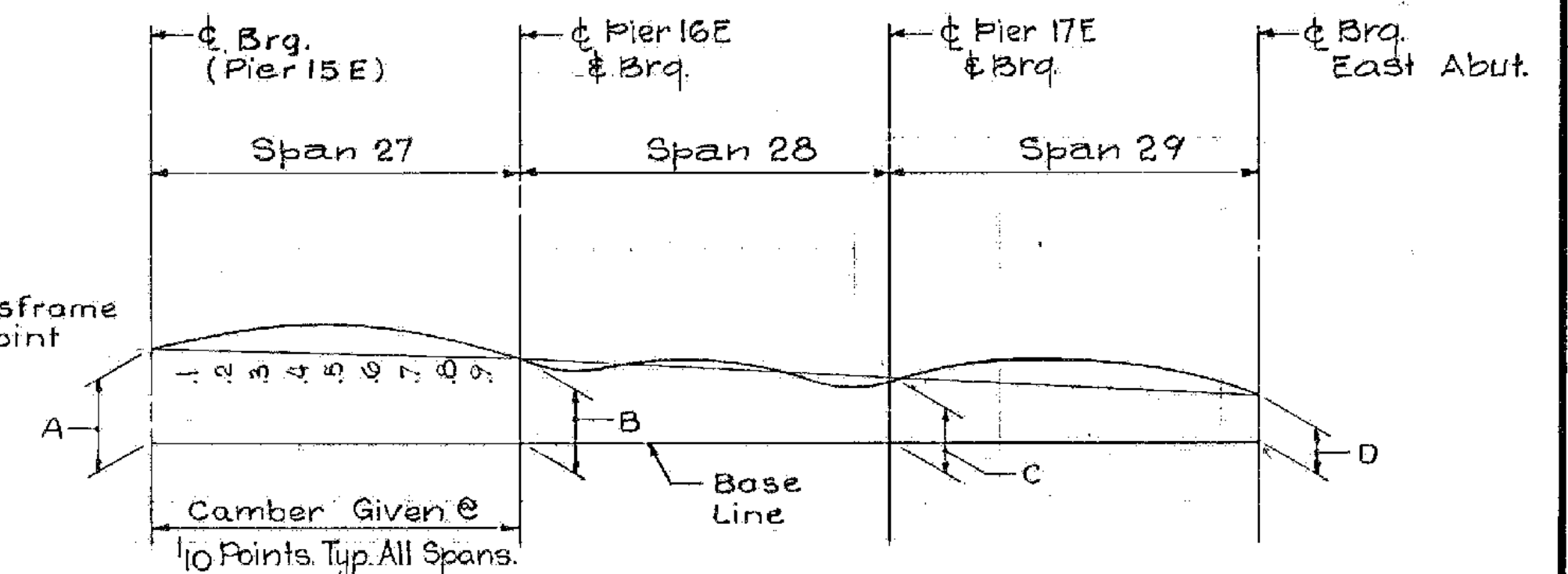


UNIT 6				
BEAM NO.	A	B	C	D
G1 & G2	4.07	2.61	1.26	0.00
G3	4.06	2.60	1.25	0.00
G4	4.26	2.63	1.25	0.00
G5	4.47	2.66	1.26	0.00

Dimensions A-D Measured in Feet



NOTE:
For Section A-A, see Sheet SS61.

CAMBER * (Inches)												
Span	Gdr.	¢ Brq.	1	2	3	4	5	6	7	8	9	¢ Brq.
27	1-5	0	1	1 7/8	2 3/16	2 1/2	3	2 3/8	2 1/8	1 5/16	3/16	0
28	1-5	0	-3/16	-1/8	1/16	3/16	3/16	3/16	0	-1/8	-3/16	0
29	1-5	0	3/16	1 3/8	2 3/16	2 7/8	3 3/16	3 1/4	2 7/8	2 3/16	1 3/16	0

* Ordinates For Web Plate Layout

DEFLECTION (Inches)												
Span	Defl.	¢ Brq.	1	2	3	4	5	6	7	8	9	¢ Brq.
27	Steel Only	0	3/16	5/16	7/16	1/2	1/2	7/16	5/16	3/16	1/16	0
	Total	0	15/16	1 3/8	2 5/16	2 11/16	2 11/16	2 3/8	1 13/16	1 1/8	1/2	0
28	Steel Only	0	-1/16	-1/16	-1/16	0	0	0	-1/16	-1/16	-1/16	0
	Total	0	-4	-5/16	-3/16	-1/16	0	-1/16	-3/16	-5/16	-4	0
29	Steel Only	0	1/16	3/16	3/8	7/16	1/2	9/16	1/2	3/8	3/16	0
	Total	0	1/2	1 3/16	1 15/16	2 9/16	2 15/16	3	2 11/16	2	1 1/8	0

Minus Sign (-) Indicates an Upward Deflection.
Deflection Values are for Girder 1-5.

ALBURGH-ROUSES POINT
BHF MEMB(24)
SHEET 37 OF 50
FOR REFERENCE ONLY

STATE OF VERMONT
AGENCY OF TRANSPORTATION

TOWN OF ROUSES POINT N.Y. - ALBURG VT.	Bridge No. 1
HIGHWAY NO. ROUTE 2	Log Sta. 0+00
FRAMING PLAN & GIRDER ELEVATION - UNIT 6	
(STEEL ALTERNATE)	
Designed by S.M.	Drawn by R.D.F.
Checked by S.F.L. date 9-25-84	Bridge Design Supervisor C.J.M./S.M. date 10-31-84
PROJECT ROUSES POINT BRIDGE REPLACEMENT	PROJECT NO. BRF 028-1(III)
Bridge Sheet No. SS67	Sheet of

HNTB
HOWARD NEEDLES TAMMEN & BERGENDORFF