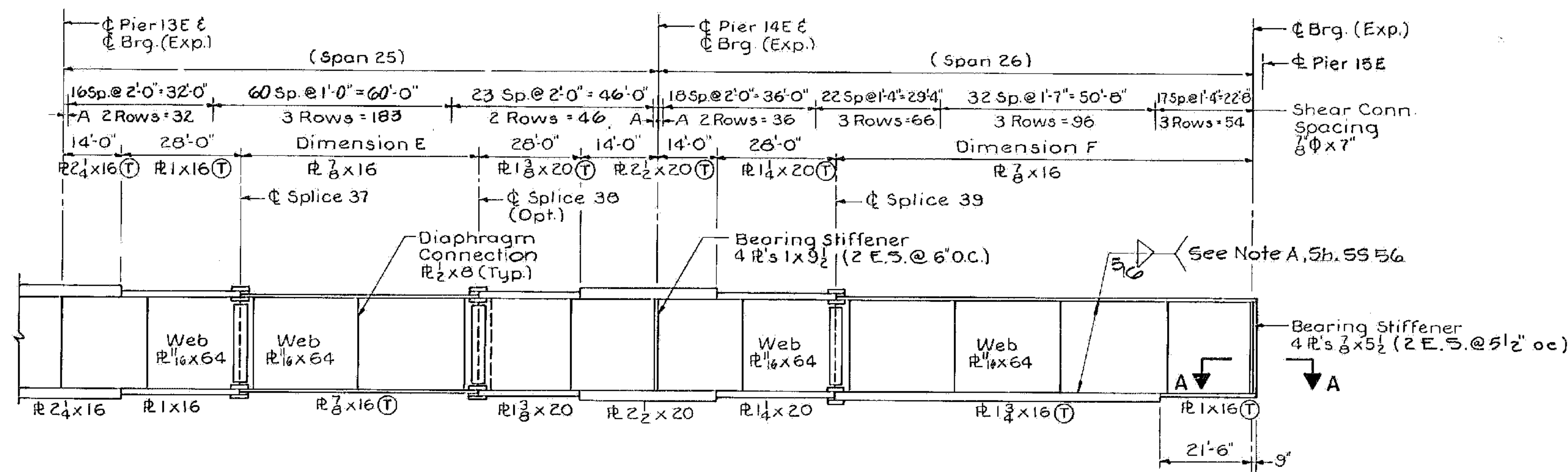


GIRDER ELEVATION - SPANS 21 THRU 24 (UNIT 5)  
No Scale



GIRDER ELEVATION - SPANS 25 AND 26 (UNIT 5)  
No Scale

- NOTES:
- For Framing Plan, see Sheet SS64.
  - For Section A-A, see Sheet SS61.

DIMENSION A			
Girder	Span 21	Spans 22 Thru 25	Span 26
G1	10' 3 3/4"	9' 3"	1'-2 1/4"
G2	1'-1 1/8"	10' 1 1/8"	1'-3 3/8"
G3	1'-4"	1'-0"	1'-4"
G4	1'-6 3/8"	1'-1 1/8"	1'-4 3/8"
G5	1'-9 1/4"	1'-2 3/8"	1'-5 3/8"

Girder	D	E	F
G1	97'-6 3/4"	55'-6 3/8"	97'-0 1/4"
G2	97'-9 3/8"	55'-9 3/8"	97'-11 1/2"
G3	98'-0"	56'-0"	98'-0"
G4	98'-2 3/8"	56'-2 3/8"	98'-0 7/8"
G5	98'-5 1/4"	56'-5 1/4"	98'-1 3/4"

Girder	Span 21-25	Span 26
G1	139'-6 3/8"	139'-10 1/2"
G2	139'-9 3/8"	139'-11 3/8"
G3	140'-0"	140'-0"
G4	140'-2 3/8"	140'-0 7/8"
G5	140'-5 1/4"	140'-1 3/4"

ALBURGH-ROUSES POINT  
BHF MEMB(24)  
SHEET 35 OF 50  
FOR REFERENCE ONLY

**STATE OF VERMONT**  
**AGENCY OF TRANSPORTATION**

TOWN OF ROUSES POINT, N.Y. - ALBURGH, VT.	Bridge No. 1
HIGHWAY NO. ROUTE 2	Log Sta. 0+00
SURV. STA.	
GIRDER ELEVATION - UNIT 5	
(STEEL ALTERNATE)	
Designed by S.M.	Drawn by R.D.F.
Checked by K.A.C. date 9-25-84	Bridge Design Supervisor C.J.M./S.M. date 10-31-84
PROJECT ROUSES POINT BRIDGE REPLACEMENT	PROJECT NO. BRF 028-1(11)
Bridge Sheet No. SS65	Sheet of

**HNTB**  
HOWARD NEEDLES TAMMEN & BERGENDOFF