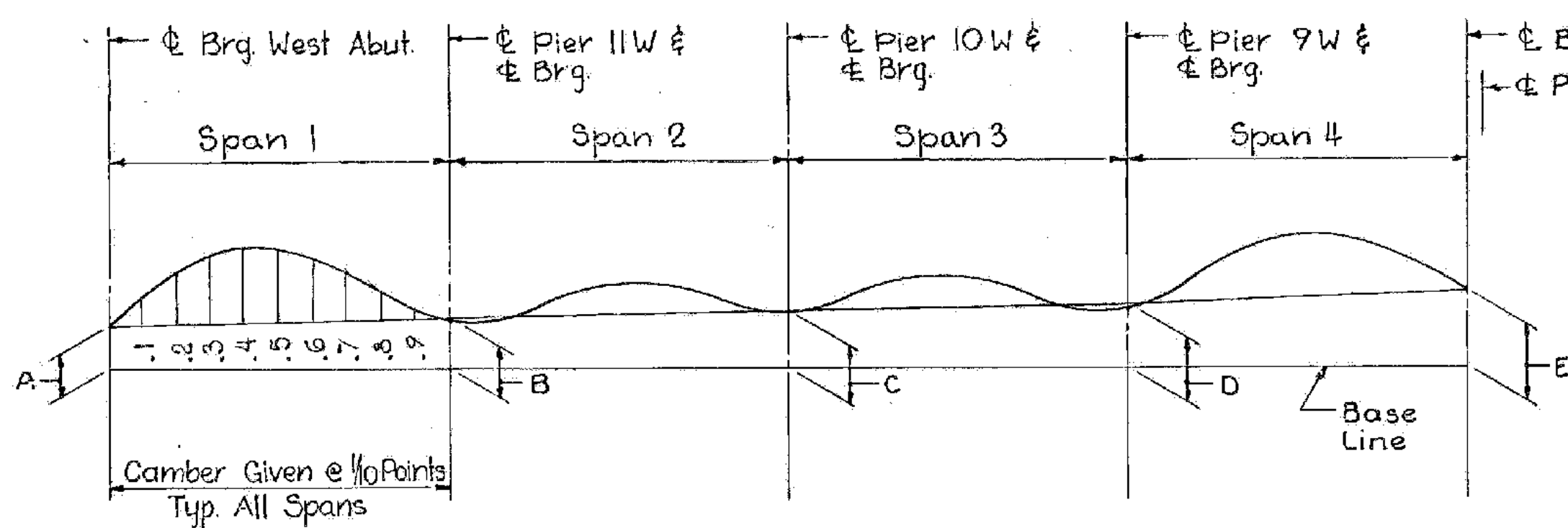


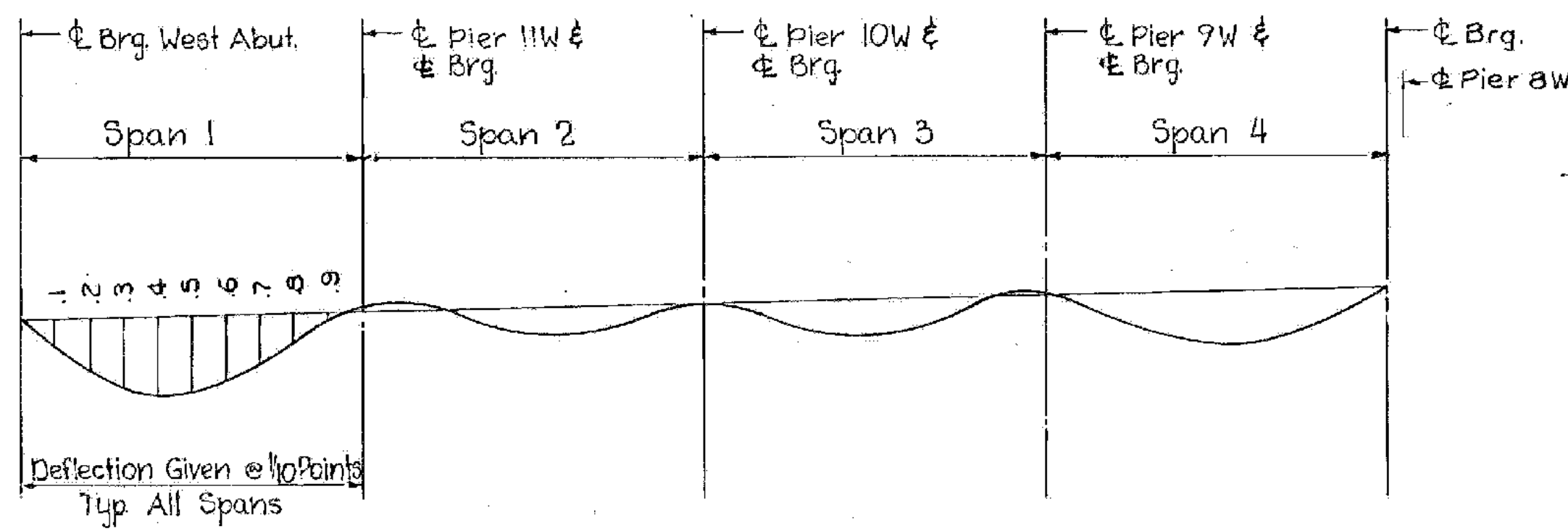
NOTE A:
Flange to Web Fillet Welds For All Flange Thicknesses Greater Than 1 1/2" Shall be 3/8" Welds.

GIRDER ELEVATION - SPANS 1 THRU 4 (UNIT I)

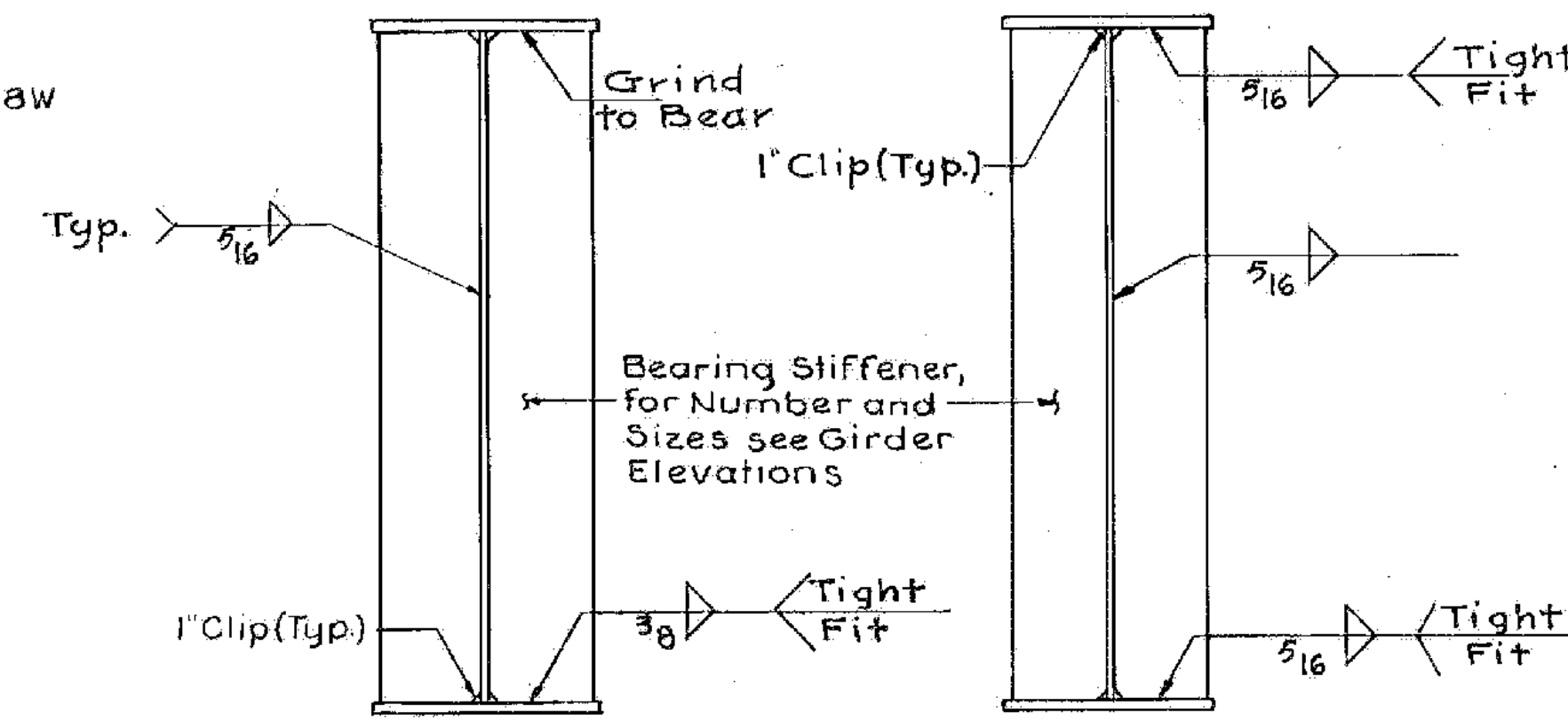
No Scale



CAMBER DIAGRAM
(Web Plate Layout)
No Scale



DEFLECTION DIAGRAM
No Scale



BEARING STIFFENER (INTERMEDIATE PIER) and **BEARING STIFFENER (ABUTMENT & PIER AT EXP. JT.)**

WEB STIFFENER PLATE DETAILS
Scale: 1"=1'-0"

Welds On Stiffener To Be Terminated A Min. 4" And A Max. Of 2" From Edge Of Stiffener R.

CAMBER * (Inches)												
Span	Gdr.	Brq.	1	2	3	4	5	6	7	8	9	Brq.
1	1-5	0	13/16	1 1/2	2	2 1/4	2 1/4	1 5/16	1 7/16	1 3/16	5/16	0
			0	0	3/16	7/16	3/4	7/8	3/8	11/16	3/8	1/8
2	1-5	0	1/8	7/16	3/4	1 1/16	1	3/4	1 1/2	3/16	0	0
			0	0	3/16	7/16	3/4	7/8	3/8	11/16	3/8	1/8
3	1-5	0	1/8	7/16	3/4	1 1/16	1	3/4	1 1/2	3/16	0	0
			0	0	3/16	7/16	3/4	7/8	3/8	11/16	3/8	1/8
4	1-5	0	5/16	1 3/16	1 3/8	1 3/16	2 1/8	2 1/16	1 3/4	1 3/16	1 1/16	0
			0	0	3/16	7/16	3/4	7/8	3/8	11/16	3/8	1/8

- * Ordinates For Web Plate Layout.
- Minus Sign (-) Indicates a Downward Camber.

UNIT I					
BEAM NO.	A	B	C	D	E
GI-G5	0.00	2.57	5.95	9.87	14.53

Dimensions A-E Measured in Feet

DEFLECTION (Inches)												
Span	Defl.	Brq.	1	2	3	4	5	6	7	8	9	Brq.
1	Steel Only	0	5/16	1/4	3/16	5/16	5/16	4	3/16	5/16	1/4	0
	Total	0	3/4	1 3/8	1 13/16	2	2	1 11/16	1 1/4	1 11/16	1 1/4	0
2	Steel Only	0	0	0	1/16	1/16	5/16	5/16	1/16	1/16	0	0
	Total	0	-1/16	1/16	1/4	1/2	3/16	3/16	1/2	1/4	1/16	0
3	Steel Only	0	0	1/16	1/16	5/16	5/16	1/16	1/16	0	0	0
	Total	0	1/16	5/16	1/2	1 1/16	1 1/16	1/2	5/16	1/16	1/16	0
4	Steel Only	0	1/16	5/16	3/8	1/4	5/16	5/16	1/4	3/16	5/16	0
	Total	0	1/4	1 1/16	1 3/16	1 9/16	1 13/16	1 13/16	1 9/16	1 3/16	3/8	0

Deflection Values Are For Girders 1-5

Minus Sign (-) Indicates an Upward Deflection.

NOTES:

- For Framing Plan, see Sheet S555.
- For Section A-A, see Sheet S561.

ALBURGH-ROUSES POINT
BHF MEMB(24)
SHEET 26 OF 50
FOR REFERENCE ONLY

**STATE OF VERMONT
AGENCY OF TRANSPORTATION**

TOWN OF ROUSES POINT N.Y.-ALBURG VT.	Bridge No. 1
HIGHWAY NO. ROUTE 2	Log Sta. 0+00
	Surv. Sta.
GIRDER ELEVATION - UNIT I (STEEL ALTERNATE)	
Designed by B.B.C.	Drawn by R.D.F./S.Z.
Checked by K.A.C. date 9-25-84	Bridge Design Supervisor C.J.M./S.M. date 10-31-84
PROJECT ROUSES POINT BRIDGE REPLACEMENT	PROJECT NO. BRF 028-1(1)
Bridge Sheet No. S556	Sheet of

