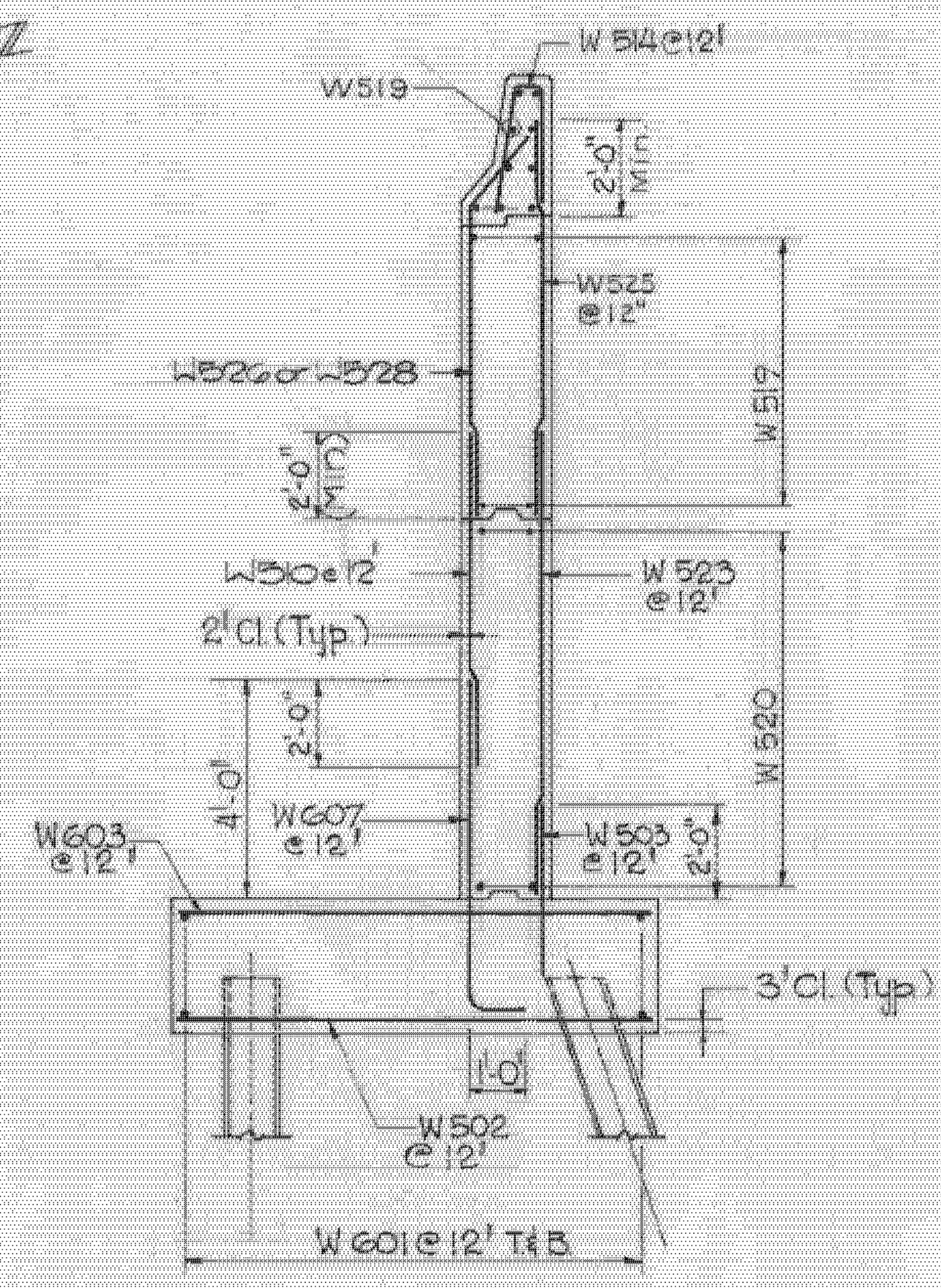
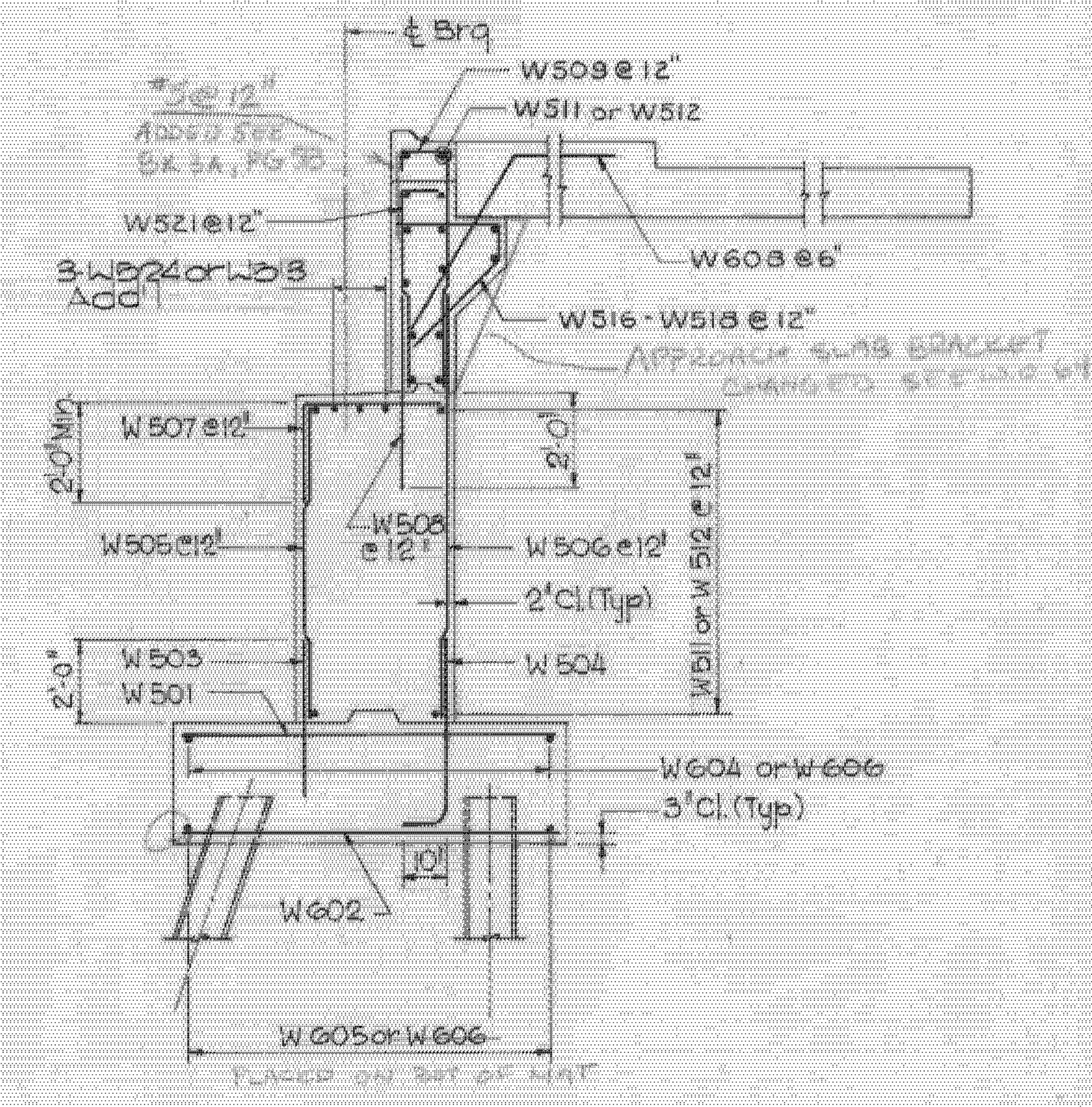


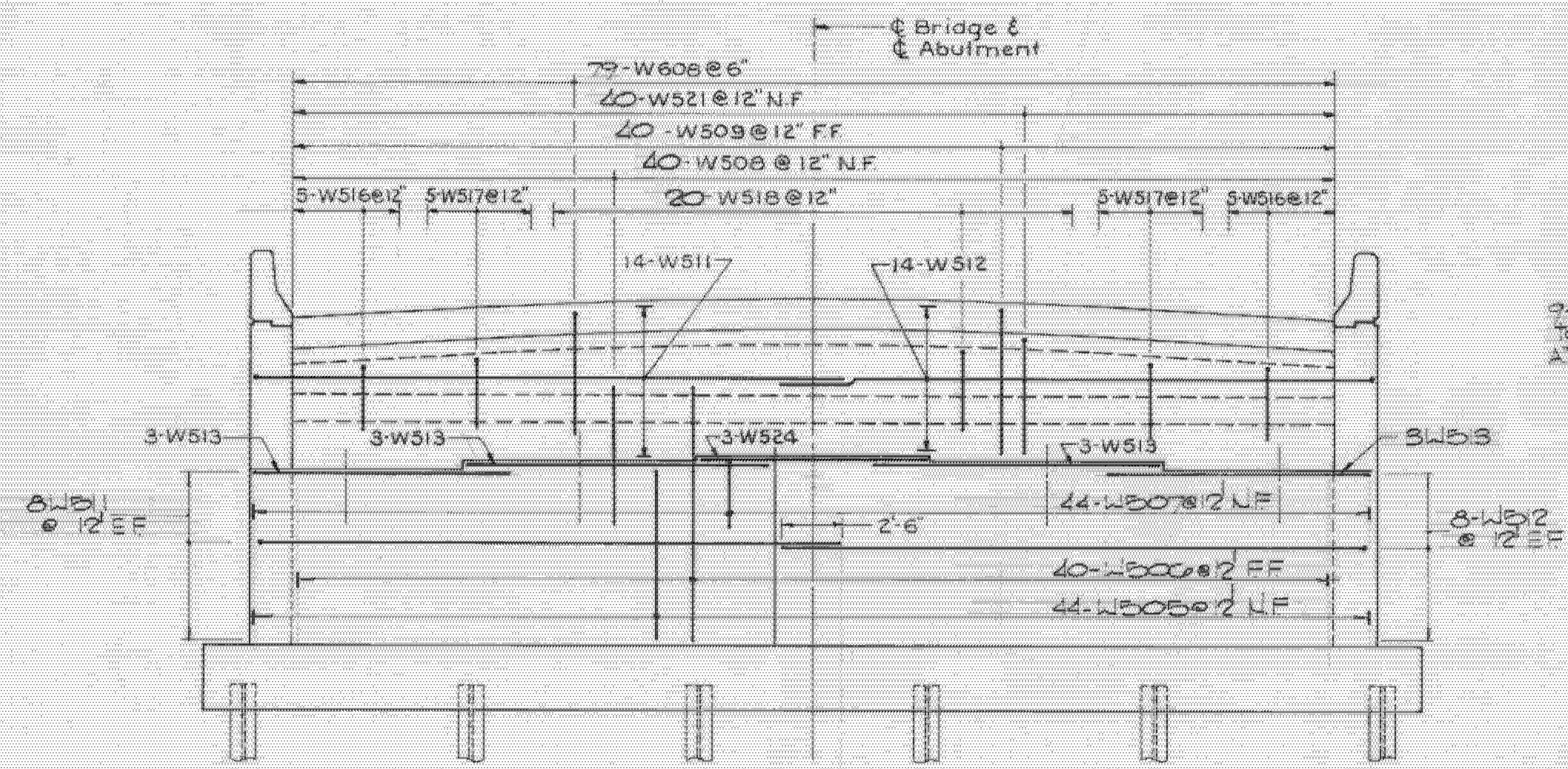
FOOTING PLAN - WEST ABUTMENT
Scale: 1/4" = 1'-0"



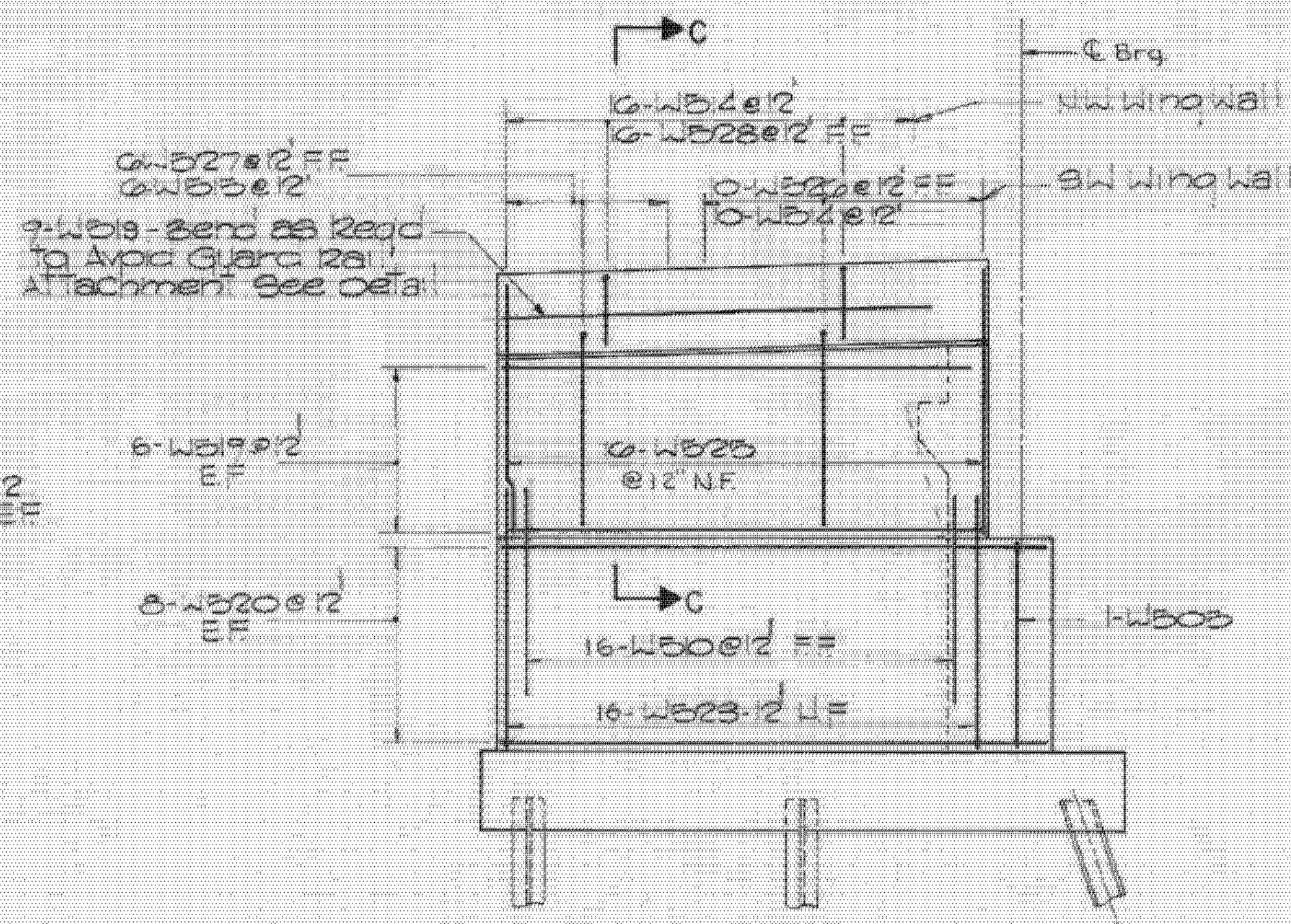
SECTION A-A
Scale: 3/8" = 1'-0"



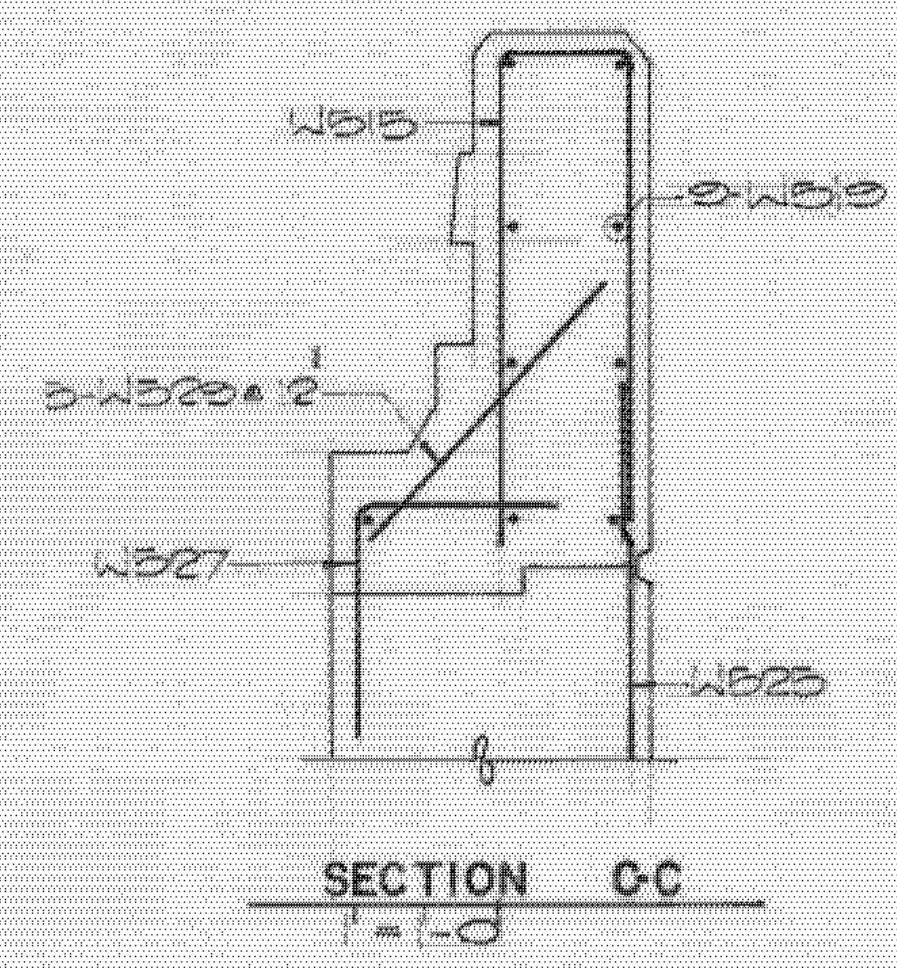
SECTION B-B
Scale: 3/8" = 1'-0"



ELEVATION - WEST ABUTMENT
Scale: 1/4" = 1'-0"



ELEVATION - NW & SW WINGWALL
Scale: 1/4" = 1'-0"



SECTION C-C
Scale: 1" = 1'-0"

ALBURGH-ROUSES POINT
BHF MEMB(24)
SHEET 22 OF 50
FOR REFERENCE ONLY

**STATE OF VERMONT
AGENCY OF TRANSPORTATION**

TOWN OF ROUSES POINT NY. — ALBURGH VT.	Bridge No. 1
HIGHWAY NO. ROUTE 2	Log Sta.
	Surr. Sta.

**WEST ABUTMENT, REINFORCING STEEL
(STEEL ALTERNATE)**

Designed by K.A.C.	Drawn by A.B.M.
Checked by R.M.C.	Bridge Design Supervisor
date 10-26-84	C.J.M./S.M. date 10-26-84

PROJECT ROUSES POINT BRIDGE REPLACEMENT	PROJECT NO. BRF 028-1(11)
Bridge Sheet No. S552	Sheet of

