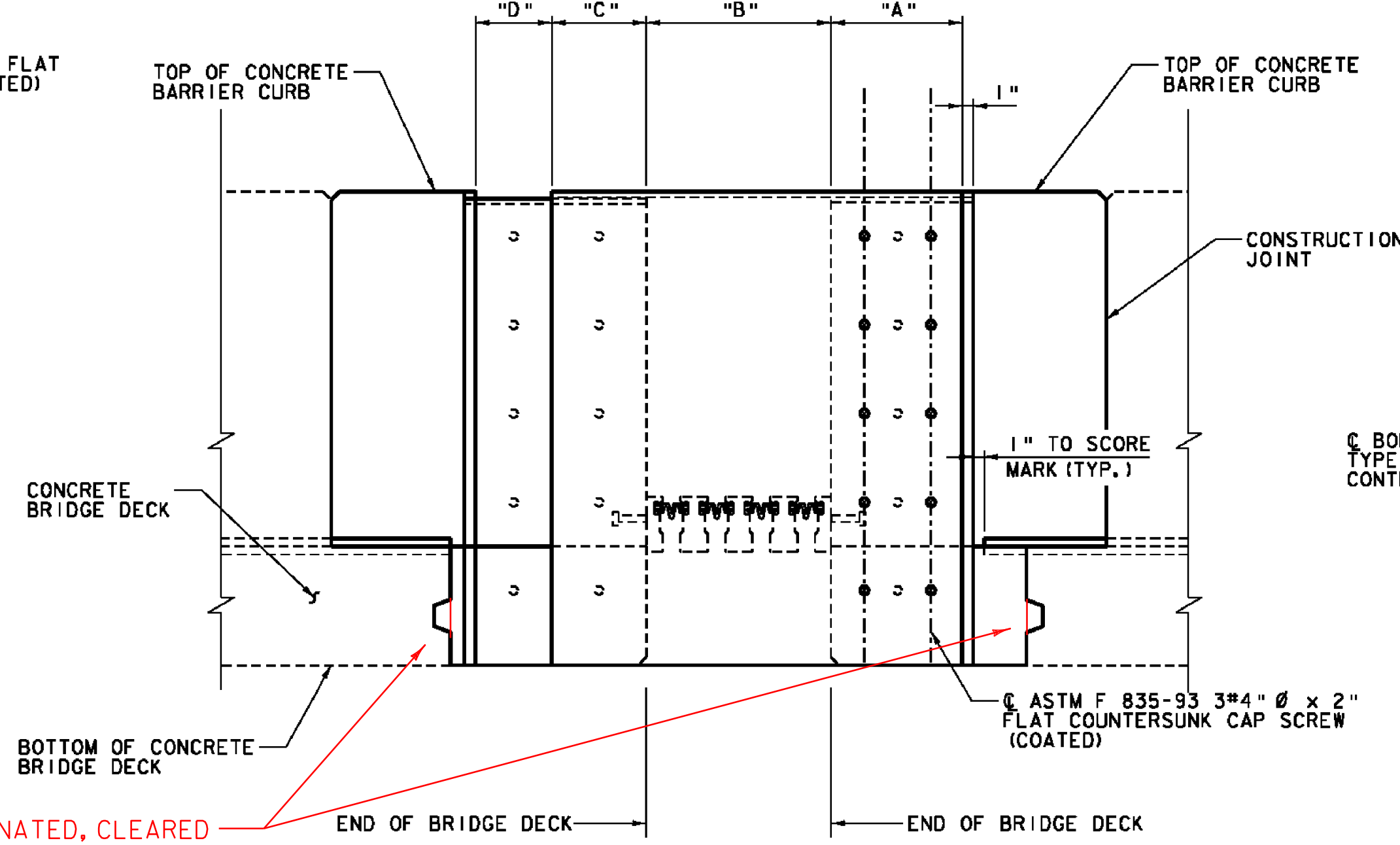
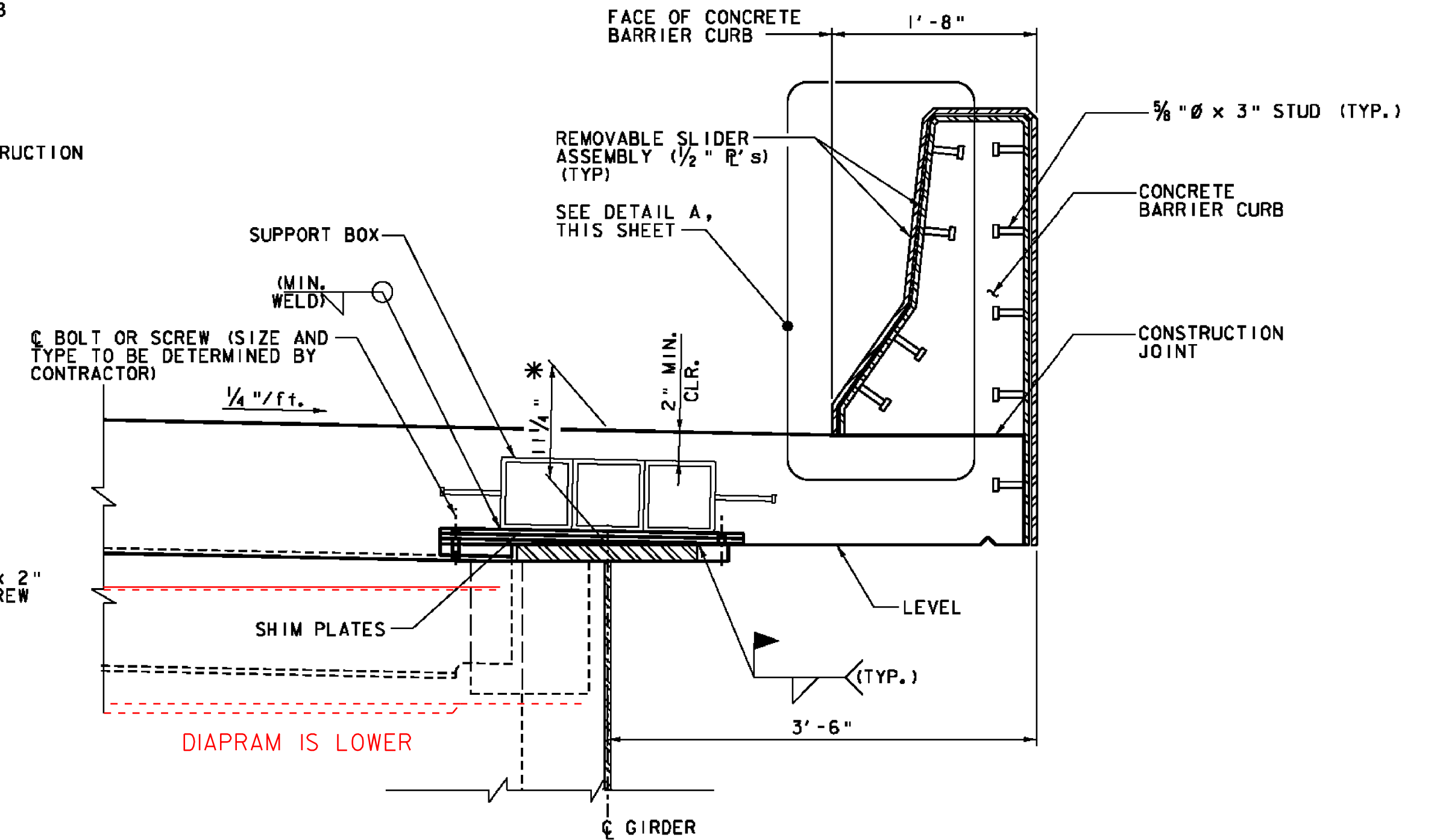


SECTION B-B
(PROFILE GRADE SLOPE NOT SHOWN)



VIEW F-F
(PROFILE GRADE SLOPE NOT SHOWN)



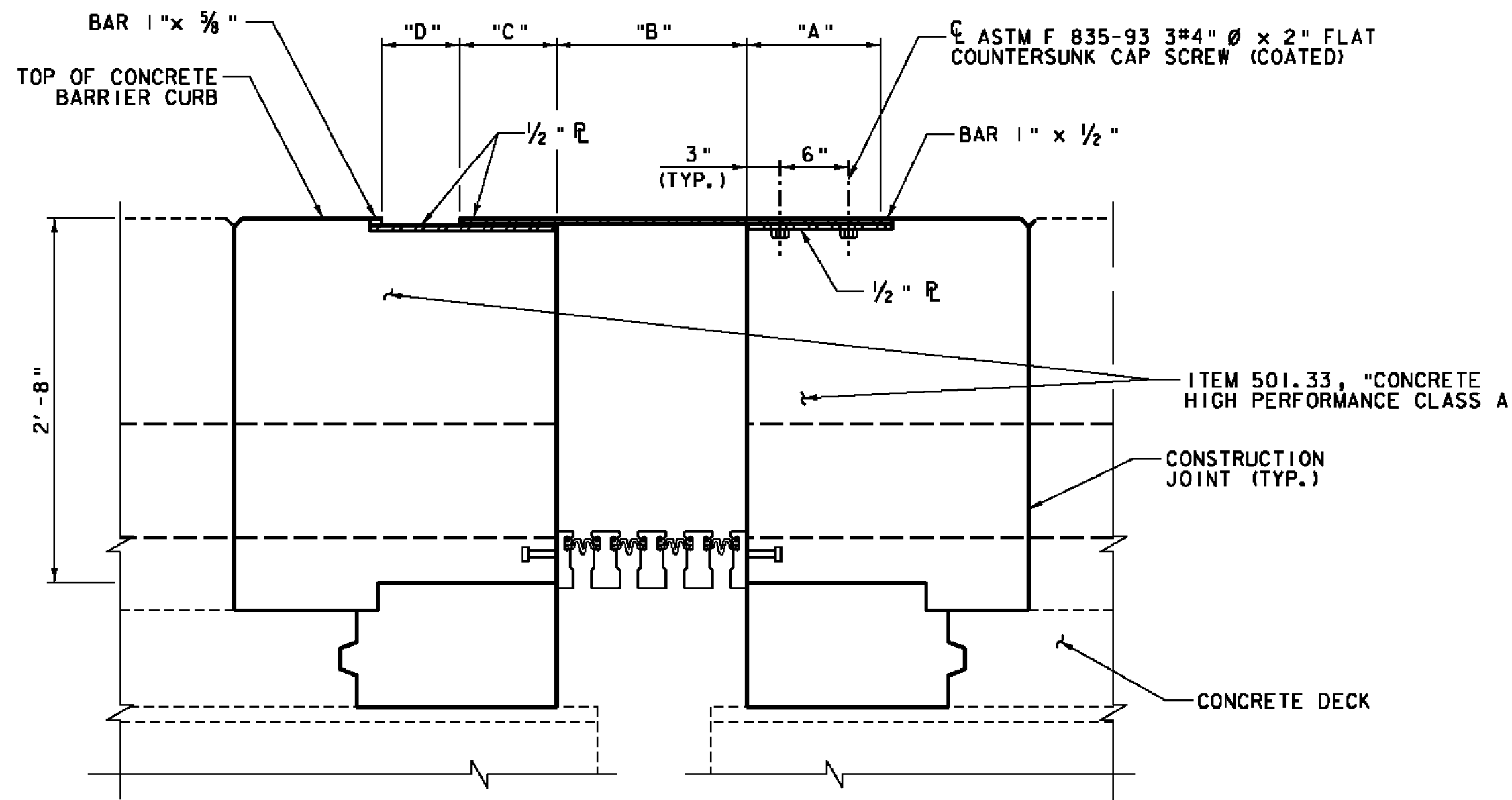
SECTION D-D

| PIER | "A" | "B" | "C" | "D" |
|------|-----|---------|--------|--------|
| 2E | 12" | 14 3/4" | 6 3/4" | 5 3/4" |
| 9E | 12" | 14 7/8" | 6 7/8" | 5 7/8" |

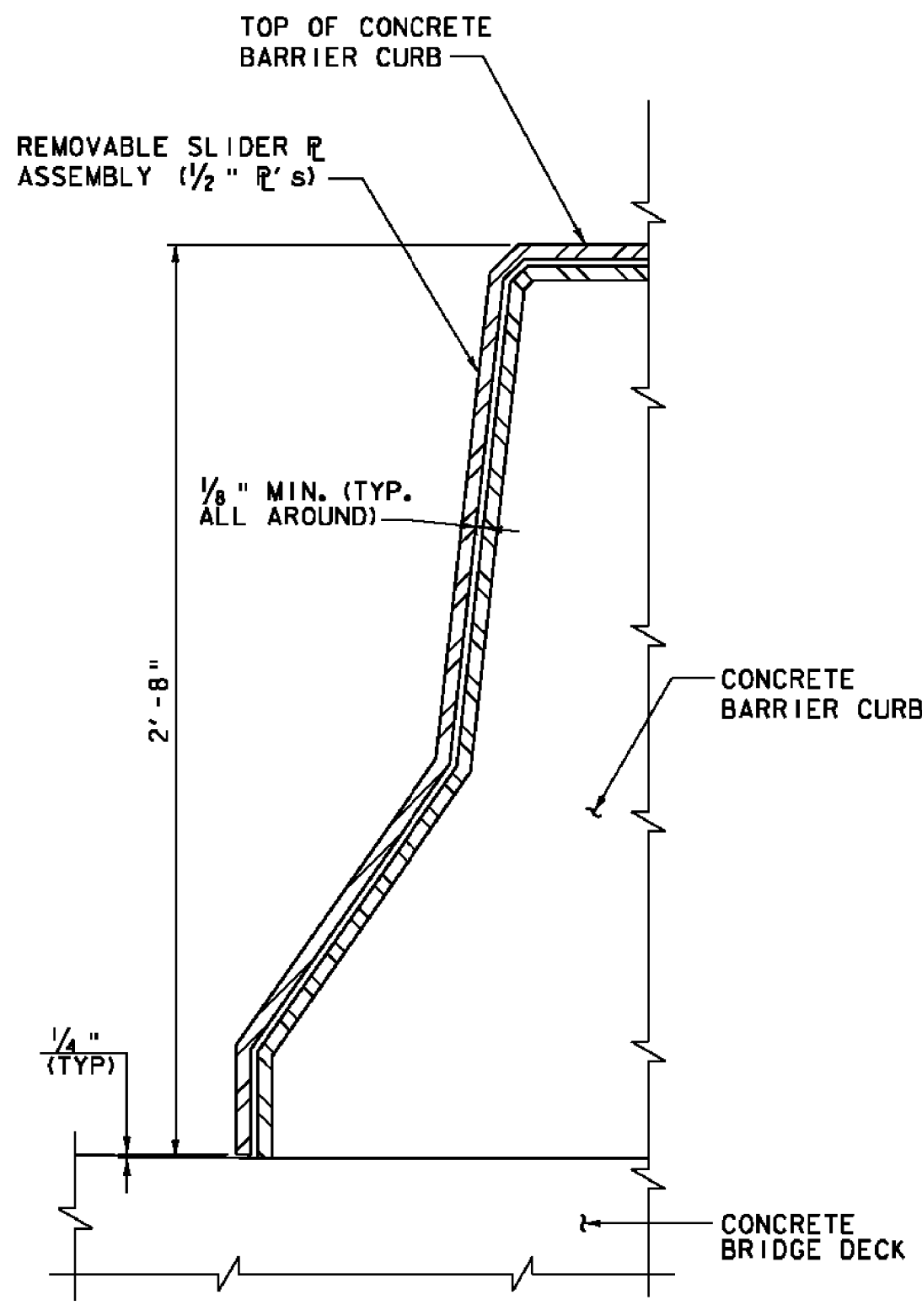
(DIMENSIONS GIVEN AT 45°F)

**4-SEAL EXPANSION JOINT
CONCRETE BARRIER CURB
REMOVAL NOTES:**

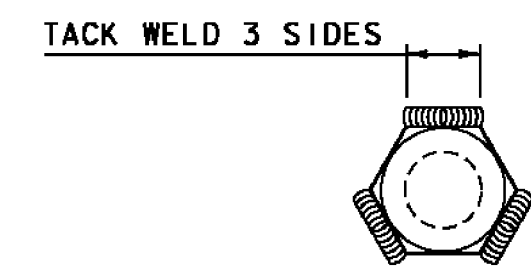
1. REMOVE EXISTING CONCRETE BARRIER CURB AND SLIDING PLATE ASSEMBLY TO THE LIMITS SHOWN.
2. THE CONCRETE BARRIER CURB SHALL BE SAWCUT 1" MINIMUM ON ALL FACES AT THE REMOVAL LIMITS.
3. EXISTING CONCRETE BARRIER CURB AND DECK REINFORCING STEEL SHALL BE RETAINED AND CLEANED OF DEBRIS. CONCRETE REMOVAL OPERATIONS SHALL NOT DAMAGE THE EXISTING REINFORCING STEEL.
4. ALL COSTS FOR REMOVING THE EXISTING SLIDING PLATE ASSEMBLY AND CONCRETE BARRIER CURB SHALL BE PAID FOR UNDER ITEM 529.20, "PARTIAL REMOVAL OF STRUCTURE (EXPANSION JOINT, 4 SEALS)."



SECTION C-C
(PROFILE GRADE SLOPE NOT SHOWN)

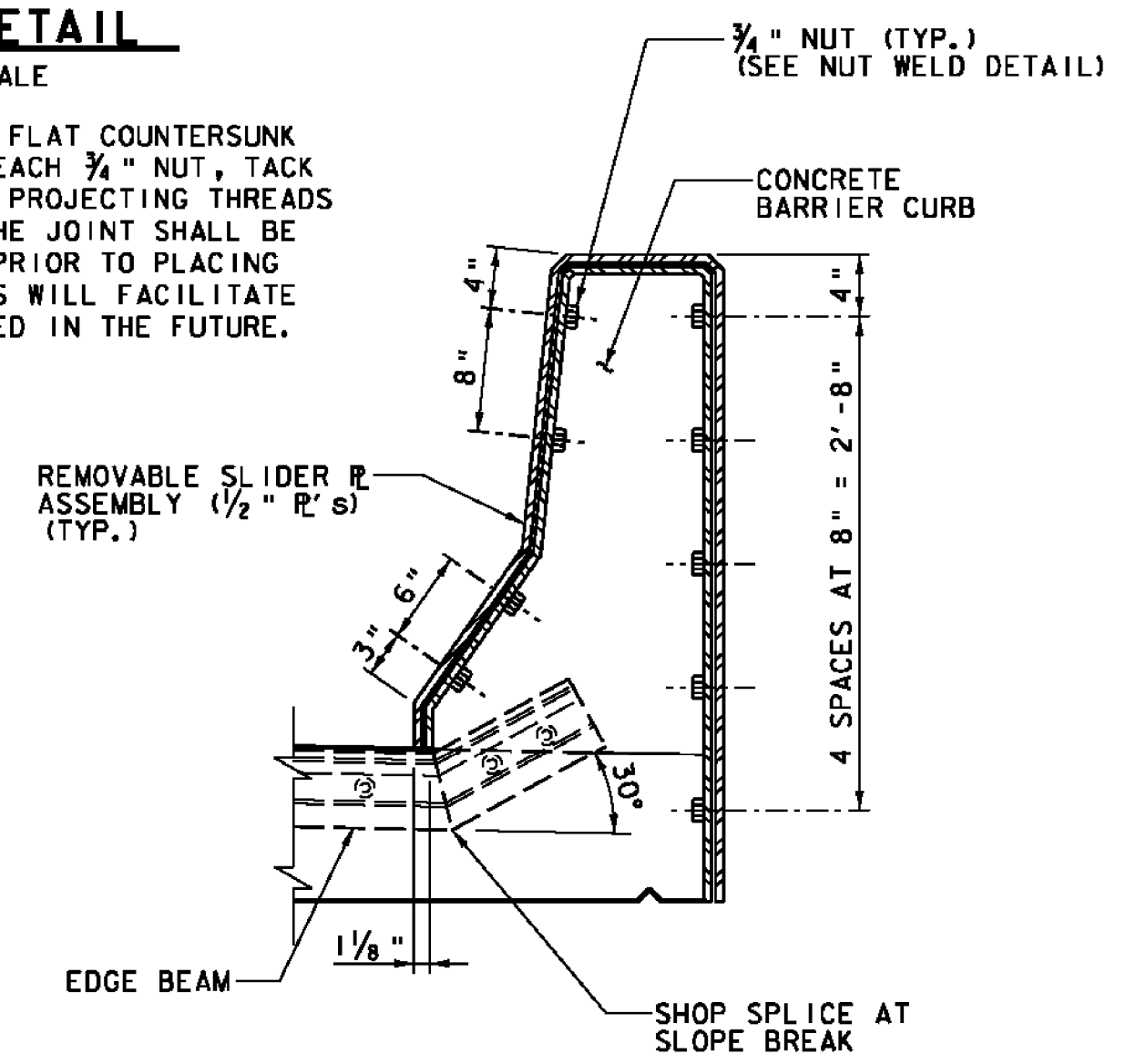


DETAIL A



NUT WELD DETAIL

NOTE: ASTM F 835-93 3/4" DIA. FLAT COUNTERSUNK CAP SCREW (COATED) FOR EACH 3/4" NUT, TACK WELD NUT ON (3) FACES. PROJECTING THREADS OF THE 3/4" Ø BOLTS IN THE JOINT SHALL BE GREASED BY CONTRACTOR PRIOR TO PLACING ADJACENT CONCRETE. THIS WILL FACILITATE BOLT REMOVAL IF REQUIRED IN THE FUTURE.



SECTION E-E

- NOTES:**
1. SEE MODULAR JOINT DETAILS SHEETS 1 AND 2 OF 4 FOR SECTION LOCATIONS.
 2. SEE MODULAR JOINT DETAILS SHEET 1 OF 4 FOR EXPANSION JOINT NOTES.

4-SEAL EXPANSION JOINT DETAILS
NOT TO SCALE

| | | |
|---|-----------------------------------|-----------------------|
| PROJECT NAME: ALBURGH - ROUSES POINT | FILE NAME: slob032jnt4_detail.dgn | PLOT DATE: 12/23/2011 |
| PROJECT NUMBER: BHF MEMB(24) | PROJECT LEADER: JPB | DRAWN BY: MWS |
| | DESIGNED BY: JF | CHECKED BY: JPB |
| MODULAR JOINT DETAILS SHEET 3 OF 4 | | SHEET 13 OF 50 |