

Table 6H-2. Meaning of Symbols on Typical Application Diagrams

	Arrow panel
	Arrow panel support or trailer (shown facing down)
	Changeable message sign or support trailer
	Channelizing device
	Crash Cushion
	Direction of temporary traffic detour
	Direction of traffic
	Flagger
	High level warning device (Flag tree)
	Luminaire
	Pavement markings that should be removed for a long term project
	Sign (shown facing left)
	Surveyor
	Temporary barrier
	Temporary barrier with warning lights
	Traffic or Pedestrian signal
	Truck mounted attenuator
	Type III Barricade
	Warning lights
	Work space
	Work vehicle

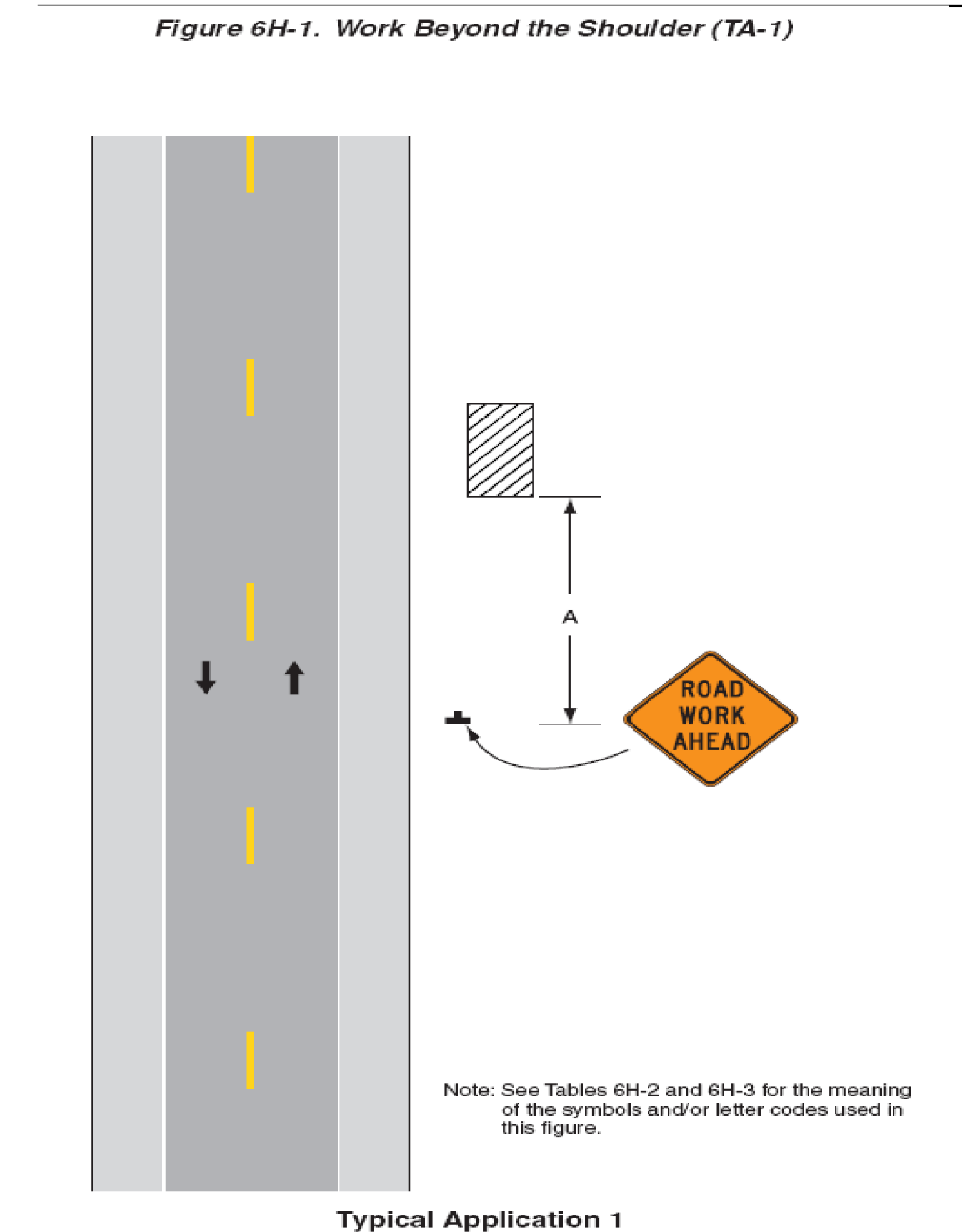
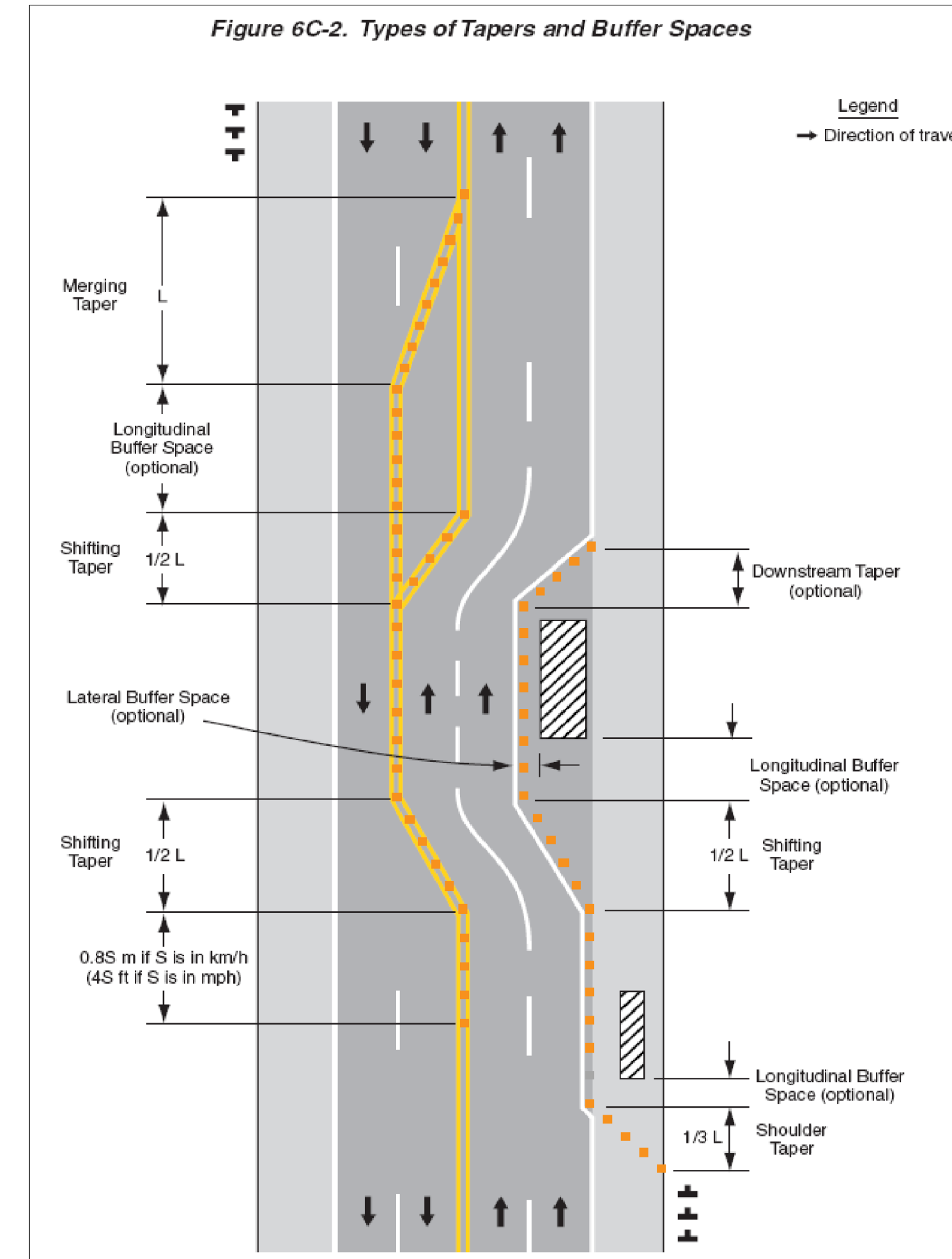
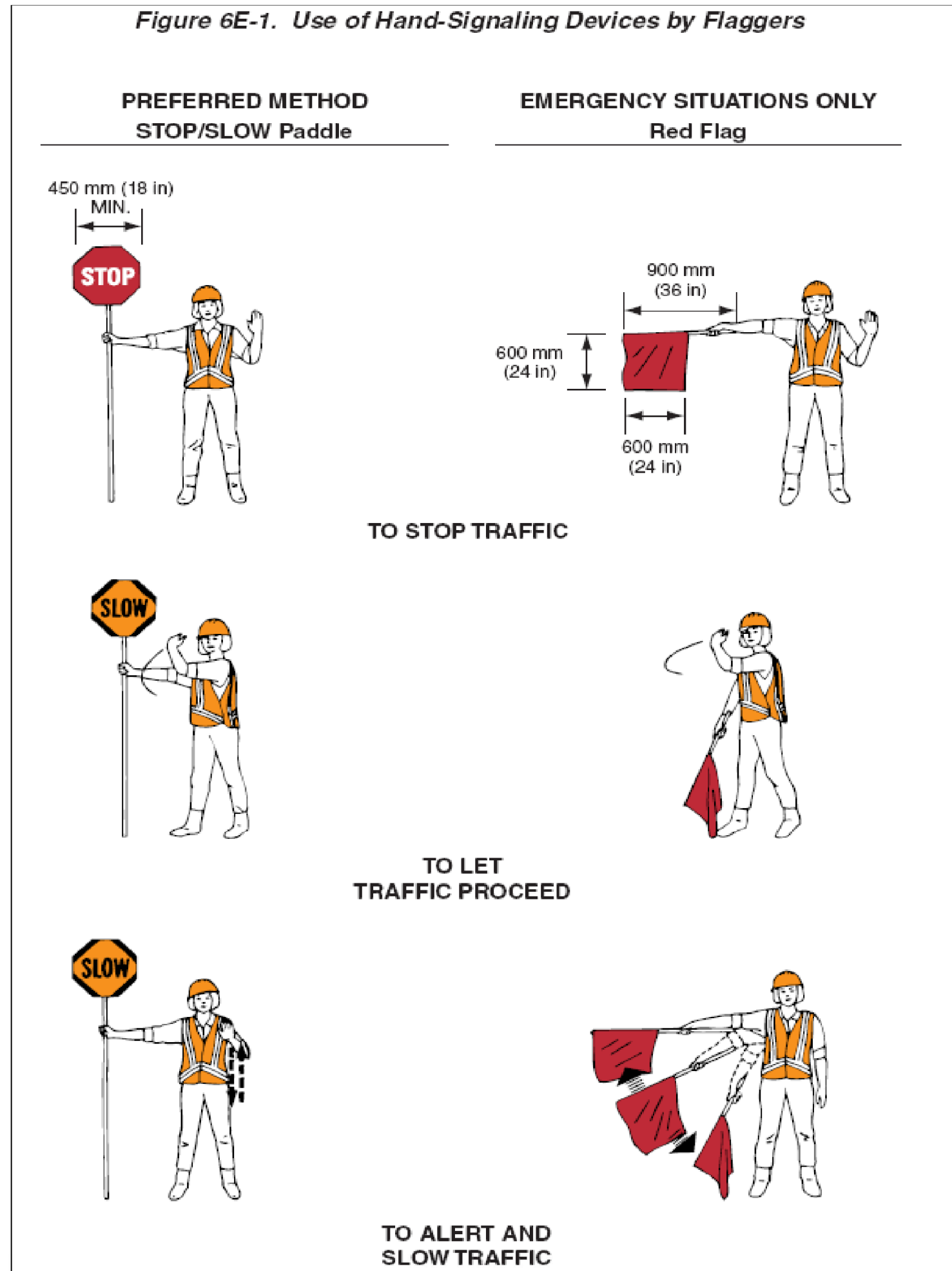


Table 6C-3. Taper Length Criteria for Temporary Traffic Control Zones

Type of Taper	Taper Length (L)*
Merging Taper	at least L
Shifting Taper	at least 0.5L
Shoulder Taper	at least 0.33L
One-Lane, Two-Way Traffic Taper	30 m (100 ft) maximum
Downstream Taper	30 m (100 ft) per lane

Table 6C-1. Recommended Advance Warning Sign Minimum Spacing

Road Type	Distance Between Signs**		
	A	B	C
Urban (low speed)*	100 feet	100 feet	100 feet
Urban (high speed)*	350 feet	350 feet	350 feet
Rural	500 feet	500 feet	500 feet
Expressway / Freeway	1,000 feet	1,500 feet	2,640 feet

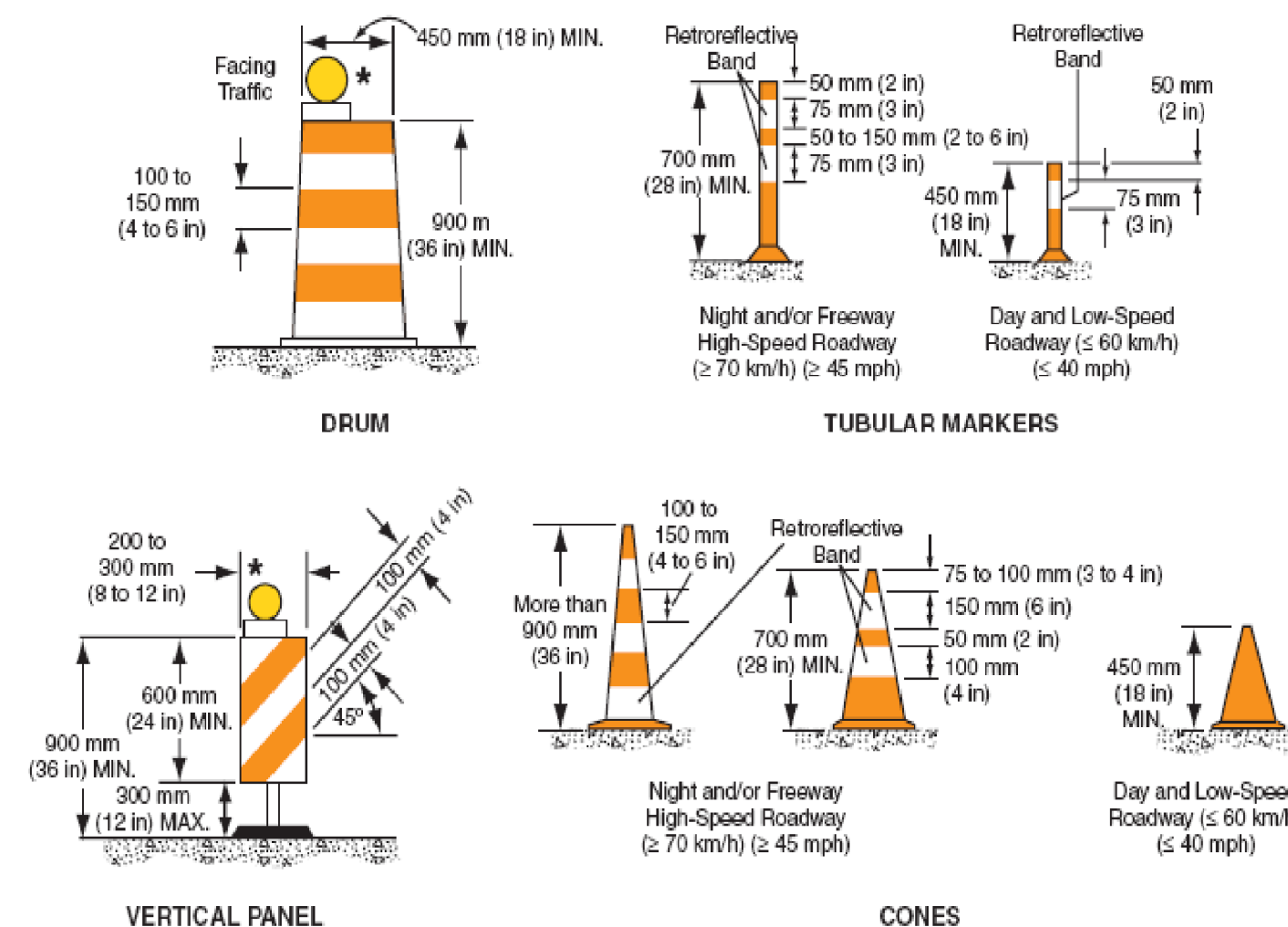
\* Speed category to be determined by the highway agency  
 \*\* The column headings A, B, and C are the dimensions shown in Figures 6H-1 through 6H-46. The A dimension is the distance from the transition or point of restriction to the first sign. The B dimension is the distance between the first and second signs. The C dimension is the distance between the second and third signs. (The "first sign" is the sign in a three-sign series that is closest to the TTC zone. The "third sign" is the sign that is furthest upstream from the TTC zone.)

Table 6C-4. Formulas for Determining Taper Lengths

Speed Limit (S)	Taper Length (L) Meters	Speed Limit (S)	Taper Length (L) Feet
60 km/h or less	$L = \frac{WS^2}{155}$	40 mph or less	$L = \frac{WS^2}{60}$
70 km/h or more	$L = \frac{WS}{1.6}$	45 mph or more	$L = WS$

Where: L = taper length in meters (feet)  
 W = width of offset in meters (feet)  
 S = posted speed limit, or off-peak 85th-percentile speed prior to work starting, or the anticipated operating speed in km/h (mph)

Figure 6F-7. Channelizing Devices (Sheet 1 of 2)



Note: If drums, cones, or tubular markers are used to channelize pedestrians, they shall be located such that there are no gaps between the bases of the devices, in order to create a continuous bottom, and the height of each individual drum, cone, or tubular marker shall be no less than 900 mm (36 in) to be detectable to users of long canes.

TEMPORARY TRAFFIC CONTROL NOTES

- ALL TEMPORARY TRAFFIC CONTROL SHALL BE IN ACCORDANCE WITH THESE PROJECT PLANS, APPLICABLE VTRANS E-SERIES STANDARD DRAWINGS, AND THE MANUAL ON UNIFORM TRAFFIC CONTROL DEVICES (MUTCD), DATED 2009, AND ITS LATEST REVISIONS, OR AS DIRECTED BY THE RESIDENT ENGINEER. IF THE CONTRACTOR DOES NOT WISH TO FOLLOW THE TEMPORARY TRAFFIC CONTROL PROVIDED, HE/SHE MAY SUBMIT AN ALTERNATE PROPOSAL AT THE PRE-CONSTRUCTION MEETING IMPLEMENTING THE PROPOSED CHANGES FOR REVIEW AND APPROVAL BY THE RESIDENT ENGINEER.
- THE CONTRACTOR MUST PROVIDE ACCESS THROUGH THE WORK ZONE FOR EMERGENCY VEHICLES AT ALL TIMES.
- THE CONTRACTOR SHALL CONDUCT THE WORK AT ALL TIMES IN SUCH A MANNER AND IN SUCH SEQUENCE SO AS TO ENSURE THE LEAST INTERFERENCE WITH TRAFFIC OCCURS.
- SIGNS SHALL ONLY BE VISIBLE TO MOTORIST AT THE TIMES WHEN THE MESSAGE IS PERTINENT, I.E. A "FLAGGER AHEAD" SIGN SHALL ONLY BE VISIBLE TO MOTORIST WHEN THE FLAGGER IS ACTUALLY PRESENT PERFORMING THEIR DUTIES.
- PAYMENT FOR CONSTRUCTION SIGNING WILL BE MADE UNDER CONTRACT ITEM 641.00 TRAFFIC CONTROL.

PROJECT NAME: STATEWIDE - SOUTHWEST REGION

PROJECT NUMBER: STPG SIGN (32)

FILE NAME: I08012\_TS.DGN  
 PROJECT LEADER: A. GAMBLE  
 DESIGNED BY: J. KELLY  
 TRAFFIC CONTROL I

PLOT DATE: 03-SEP-2010  
 DRAWN BY: J. KELLY  
 CHECKED BY: A. GAMBLE  
 SHEET 89 OF 90