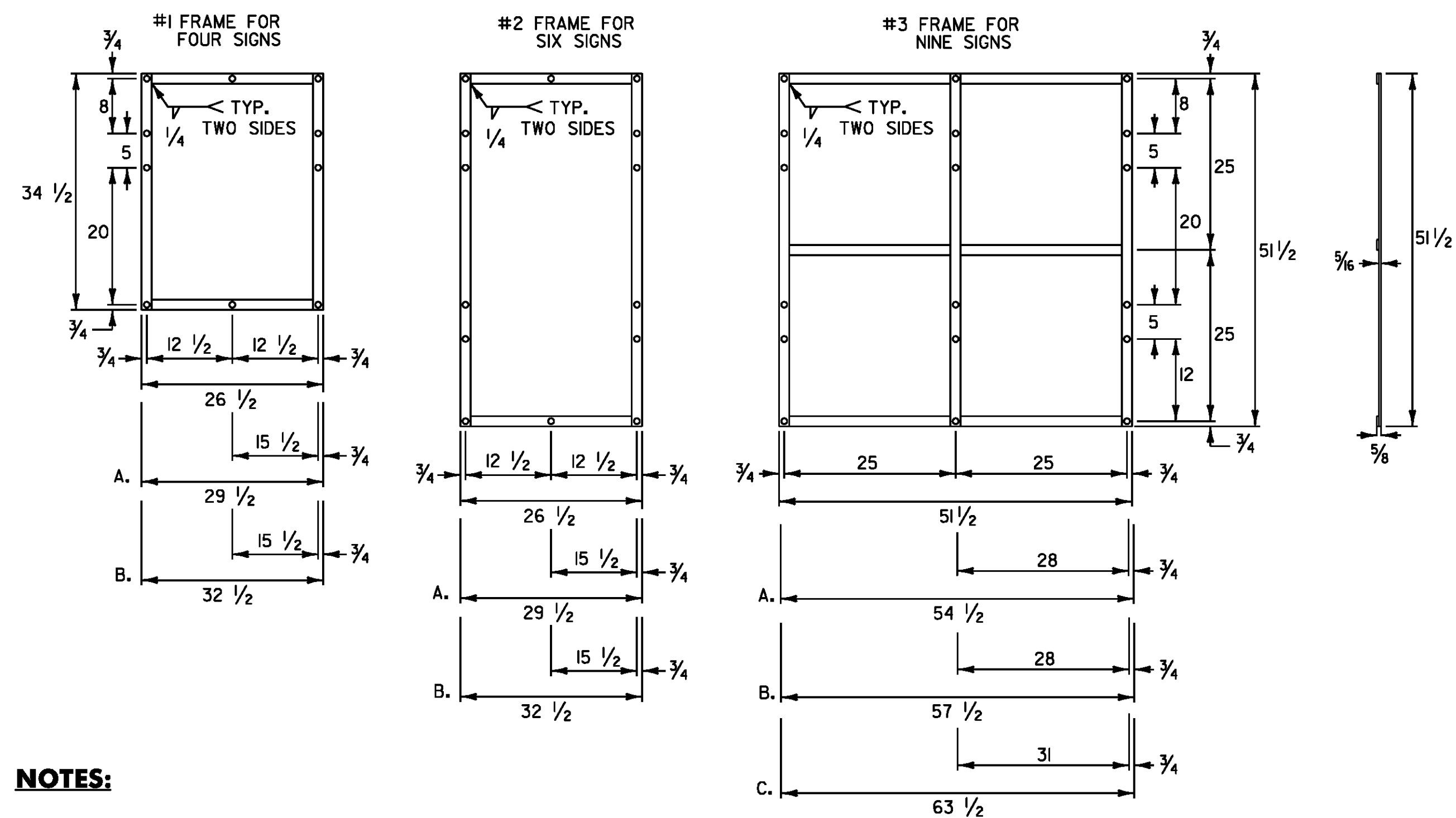


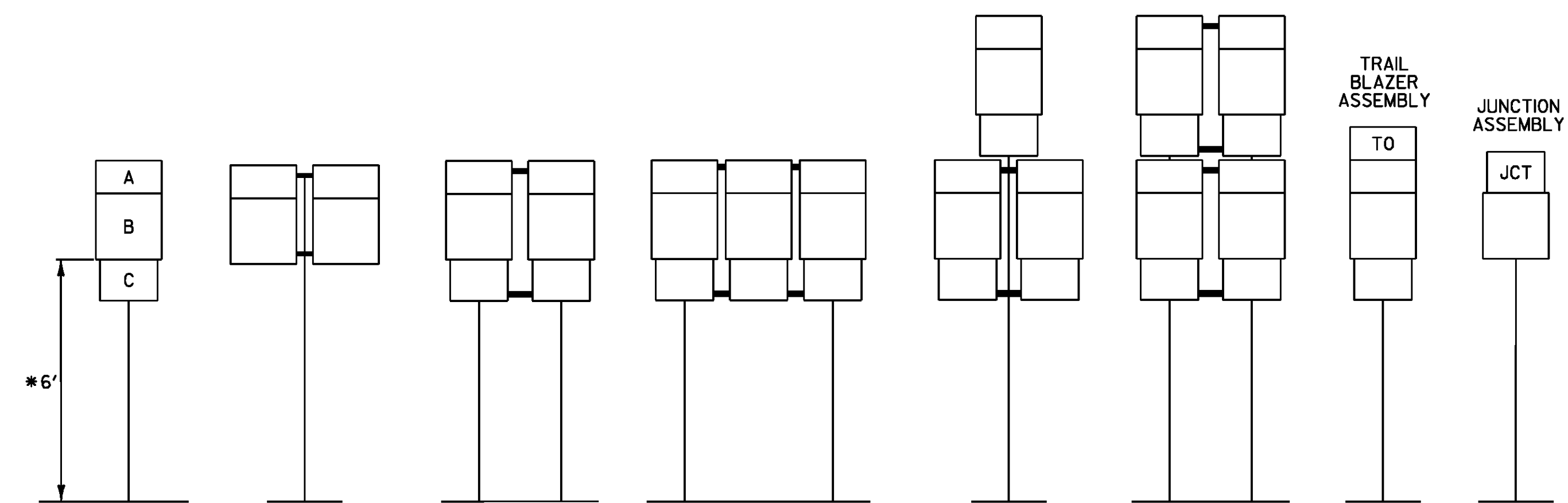
ROUTE MARKER ASSEMBLY FRAMES



NOTES:

1. NOTES FOR #1 AND #2 FRAME:
 - A. WITH ONE 30 INCH THREE DIGIT SIGN
 - B. WITH TWO 30 INCH THREE DIGIT SIGNS
2. NOTES FOR #3 FRAME:
 - A. WITH ONE 30 INCH THREE DIGIT SIGN IN AN OUTSIDE POSITION.
 - B. WITH ONE 30 INCH THREE DIGIT SIGN IN THE CENTER POSITION OR TWO SUCH SIGNS IN THE OUTSIDE POSITIONS.
 - C. WITH THREE 30 INCH THREE DIGIT SIGNS.
3. ALL HOLES SHALL BE 5/16 INCH DIAMETER. FOR OTHER SIGN COMBINATIONS, THAN ABOVE, THE FRAME DIMENSIONS AND HOLE SPACING SHALL BE MODIFIED AS NECESSARY. THE FRAME SHALL BE PAINTED WITH ONE COAT OF PRIMER AND A SECOND COAT OF BLACK PAINT. THE PAINT SHALL BE OF THE TYPE USED ON EXTERIOR METAL SURFACES TO PREVENT METAL CORROSION.
4. STANDARD FRAMES SHALL BE 5/16 INCH x 1 1/2 INCH WELDED A-36 STEEL.
5. ALL DIMENSIONS SHOWN IN INCHES UNLESS OTHERWISE NOTED.

STANDARD MOUNTING OF ROUTE MARKER ASSEMBLIES



- A - CARDINAL DIRECTION MARKER
- B - ROUTE NUMBER
- C - ADVANCE TURN ARROW OR DIRECTIONAL ARROW

* WHERE PARKING OR PEDESTRIAN TRAFFIC WILL OCCUR IN THE IMMEDIATE VICINITY OF THESE SIGNS MINIMUM VERTICAL CLEARANCE SHALL BE INCREASED TO SEVEN FEET

INSTALLATION SEQUENCE:

IN MULTIPLE HORIZONTAL MOUNTINGS PLACE A ROUTE MARKER ASSEMBLY INDICATING A LEFT TURN ON THE LEFT SIDE OF THE ASSEMBLY; RIGHT TURN ON THE RIGHT SIDE. FOR VERTICALLY STACKED MOUNTINGS PLACE THE STRAIGHT THROUGH MOVE INDICATION ON TOP, THE LEFT OR RIGHT TURNS AS APPROPRIATE BENEATH.

NOTES:

1. ALL DIMENSIONS SHOWN IN INCHES UNLESS OTHERWISE NOTED.
2. VERTICAL FRAME MEMBERS SHALL LINE UP WITH SIGN POST ON WHICH THEY ARE MOUNTED.

PROJECT NAME: STATEWIDE - SOUTHWEST REGION

PROJECT NUMBER: STPG SIGN (32)

FILE NAME: IOB012.TS.DGN
 PROJECT LEADER: A. GAMBLE
 DESIGNED BY: J. KELLY
 ROUTE MARKER ASSEMBLY

PLOT DATE: 26-AUG-2010
 DRAWN BY: J. KELLY
 CHECKED BY: A. GAMBLE
 SHEET 7 OF 90