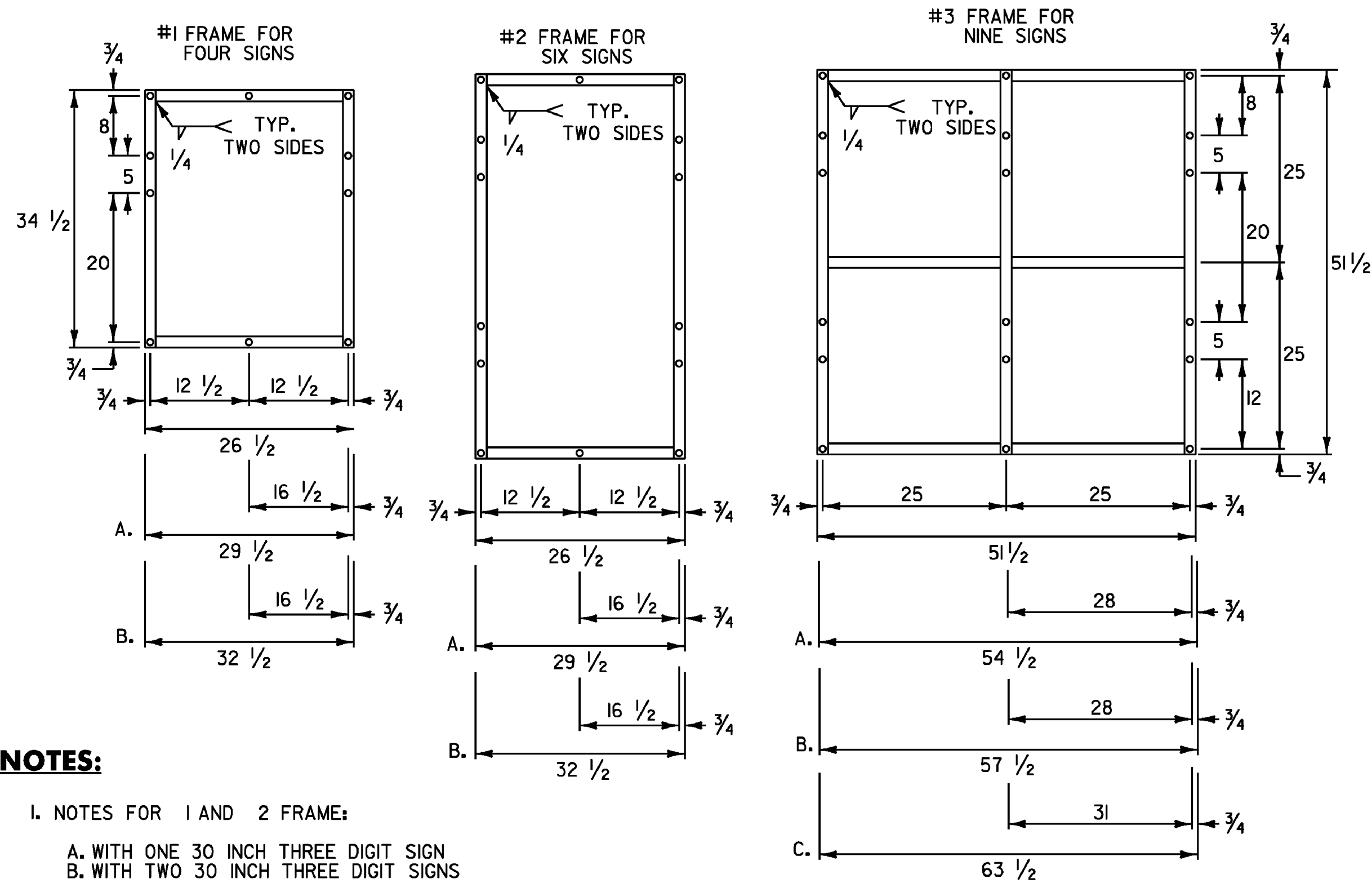


ROUTE MARKER ASSEMBLY FRAMES



NOTES:

I. NOTES FOR 1 AND 2 FRAME:

- A. WITH ONE 30 INCH THREE DIGIT SIGN
- B. WITH TWO 30 INCH THREE DIGIT SIGNS

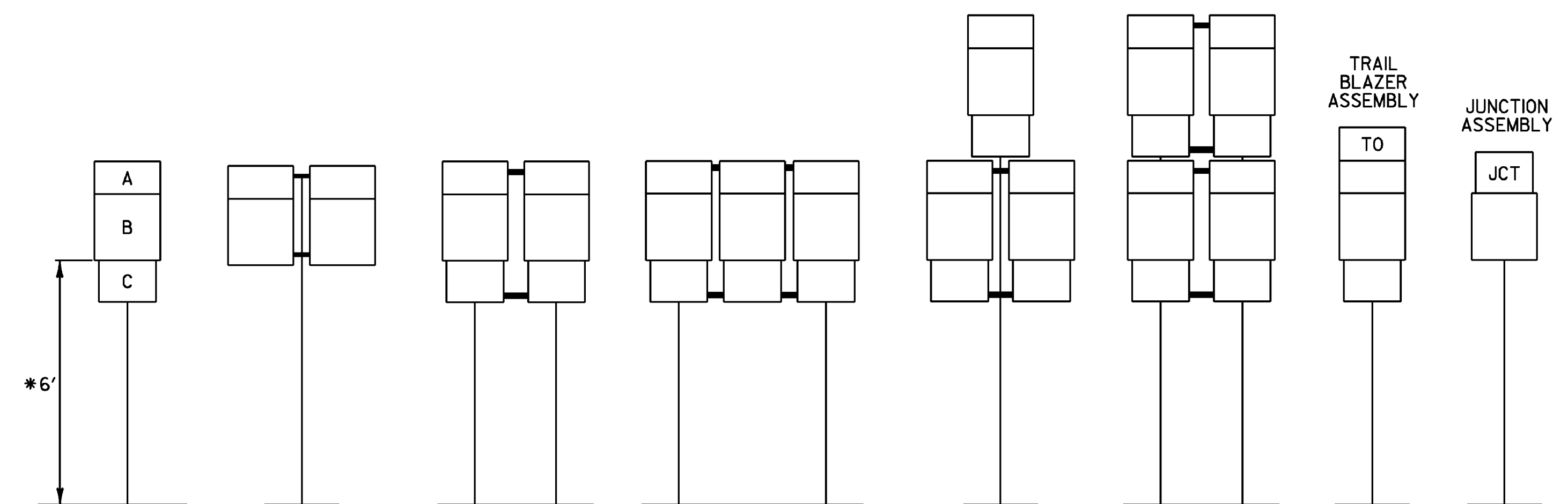
2. NOTES FOR 3 FRAME:

- A. WITH ONE 30 INCH THREE DIGIT SIGN IN AN OUTSIDE POSITION.
- B. WITH ONE 30 INCH THREE DIGIT SIGN IN THE CENTER POSITION OR TWO SUCH SIGNS IN THE OUTSIDE POSITIONS.
- C. WITH THREE 30 INCH THREE DIGIT SIGNS.

3. ALL HOLES SHALL BE 3/16 INCH DIAMETER. FOR OTHER SIGN COMBINATIONS THAN ABOVE, THE FRAME DIMENSIONS AND HOLE SPACING SHALL BE MODIFIED AS NECESSARY. THE FRAME SHALL BE PAINTED WITH ONE COAT OF PRIMER AND A SECOND COAT OF BLACK PAINT. THE PAINT SHALL BE OF THE TYPE USED ON EXTERIOR METAL SURFACES TO PREVENT METAL CORROSION.

4. STANDARD FRAMES SHALL BE 5/16 INCH x 1 1/2 INCH WELDED A-36 STEEL.

STANDARD MOUNTING OF ROUTE MARKER ASSEMBLIES



- A - CARDINAL DIRECTION MARKER
- B - ROUTE NUMBER
- C - ADVANCE TURN ARROW OR DIRECTIONAL ARROW

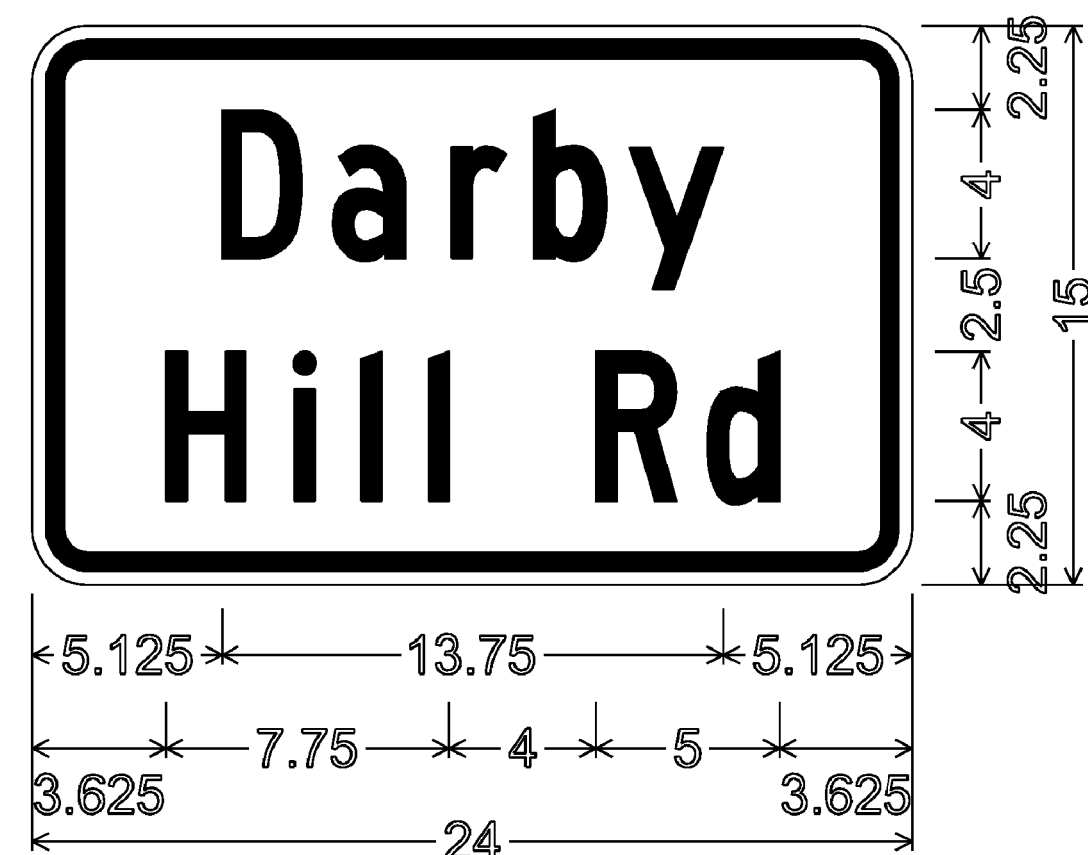
* WHERE PARKING OR PEDESTRIAN TRAFFIC WILL OCCUR IN THE IMMEDIATE VICINITY OF THESE SIGNS MINIMUM VERTICAL CLEARANCE SHALL BE INCREASED TO SEVEN FEET

NOTE:

VERTICAL FRAME MEMBERS SHALL LINE UP WITH SIGN POST ON WHICH THEY ARE MOUNTED.

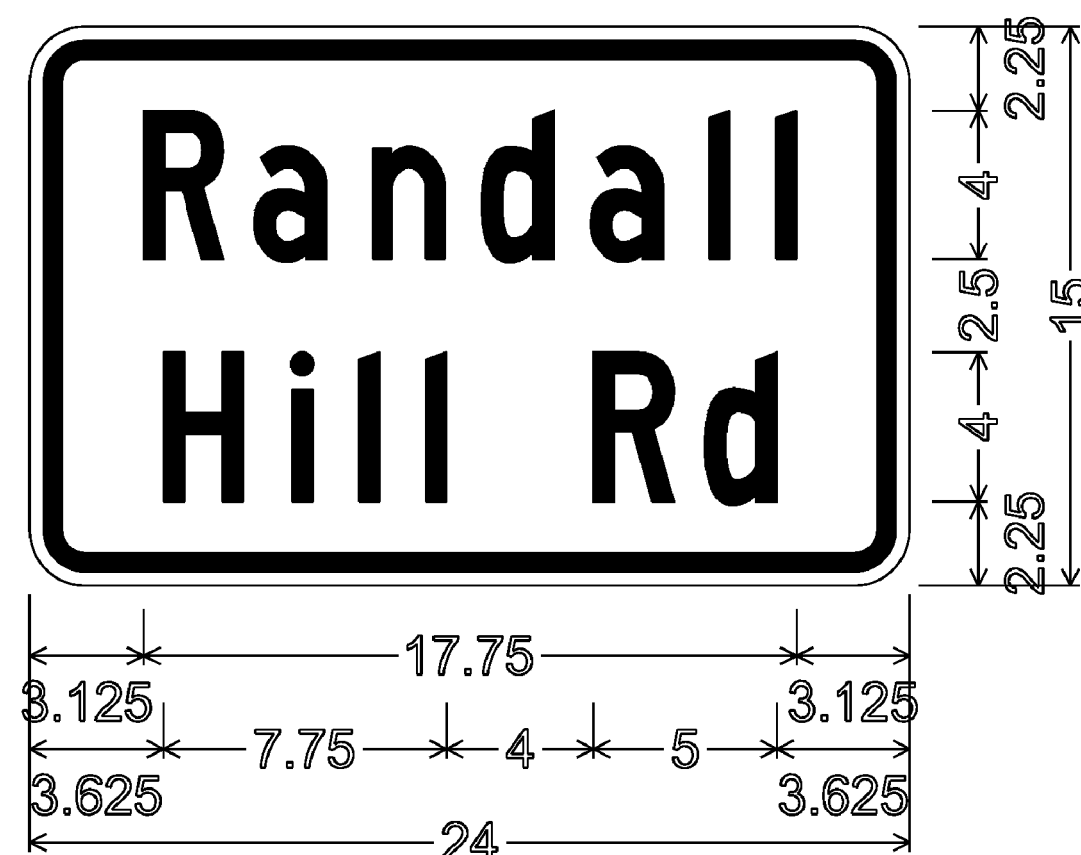
INSTALLATION SEQUENCE:

IN MULTIPLE HORIZONTAL MOUNTINGS PLACE A ROUTE MARKER ASSEMBLY INDICATING A LEFT TURN ON THE LEFT SIDE OF THE ASSEMBLY; RIGHT TURN ON THE RIGHT SIDE. FOR VERTICALLY STACKED MOUNTINGS PLACE THE STRAIGHT THROUGH MOVE INDICATION ON TOP, THE LEFT OR RIGHT TURNS AS APPROPRIATE BENEATH.



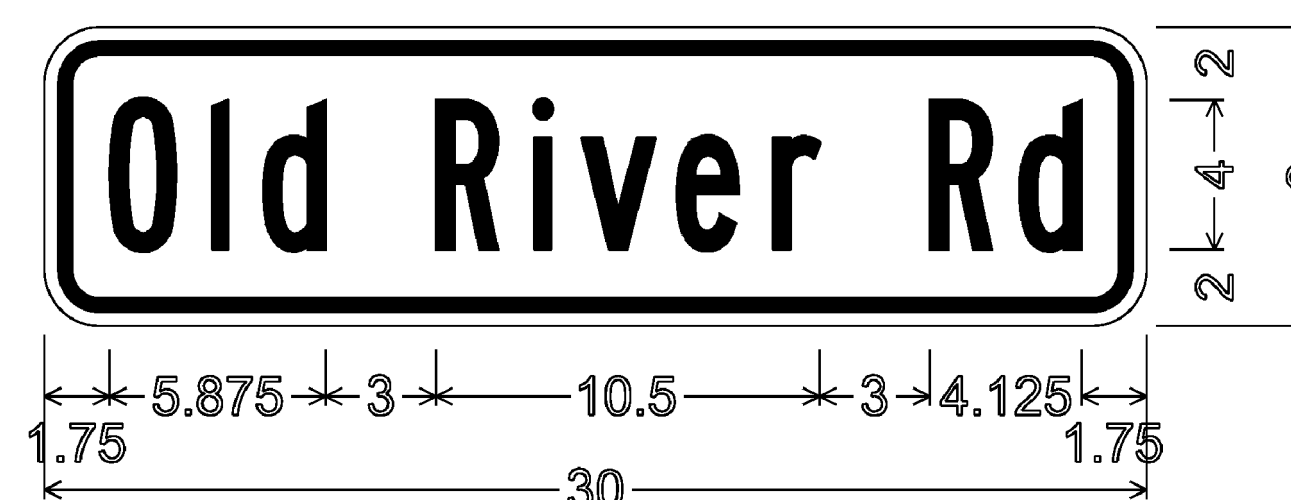
1.500" Radius, 0.500" Border, 0.375" Indent, Black on Yellow; "Darby" C; "Hill Rd" C

W16-8



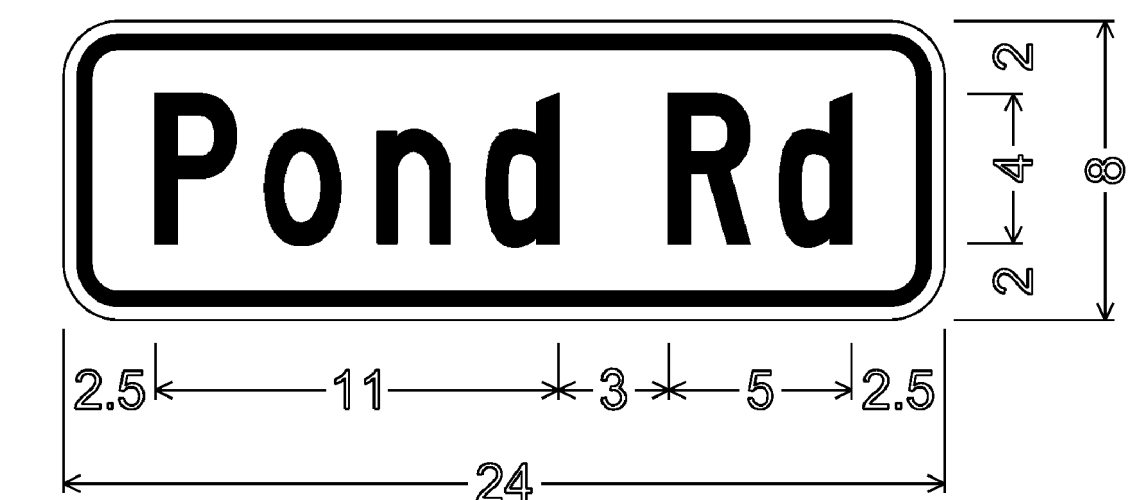
1.500" Radius, 0.500" Border, 0.375" Indent, Black on Yellow; "Randall" C; "Hill Rd" C

W16-8



1.500" Radius, 0.375" Border, 0.375" Indent, Black on Yellow; "Old River Rd" B

W16-8



1.500" Radius, 0.375" Border, 0.375" Indent, Black on Yellow; "Pond Rd" C

W16-8



1.500" Radius, 0.375" Border, 0.375" Indent, Black on Yellow; "Williamsville Rd" C

W16-8

ALL DIMENSIONS SHOWN IN INCHES UNLESS OTHERWISE NOTED.

PROJECT NAME: STATEWIDE - SOUTHEAST REGION

PROJECT NUMBER: STPG SIGN (31)

FILE NAME: IOB010.SD_4
PROJECT LEADER: A. GAMBLE
DESIGNED BY: M. MILLER
SIGN DETAILS 4

PLOT DATE: 07-OCT-2010
DRAWN BY: M. MILLER
CHECKED BY: A. GAMBLE
SHEET 7 OF 175