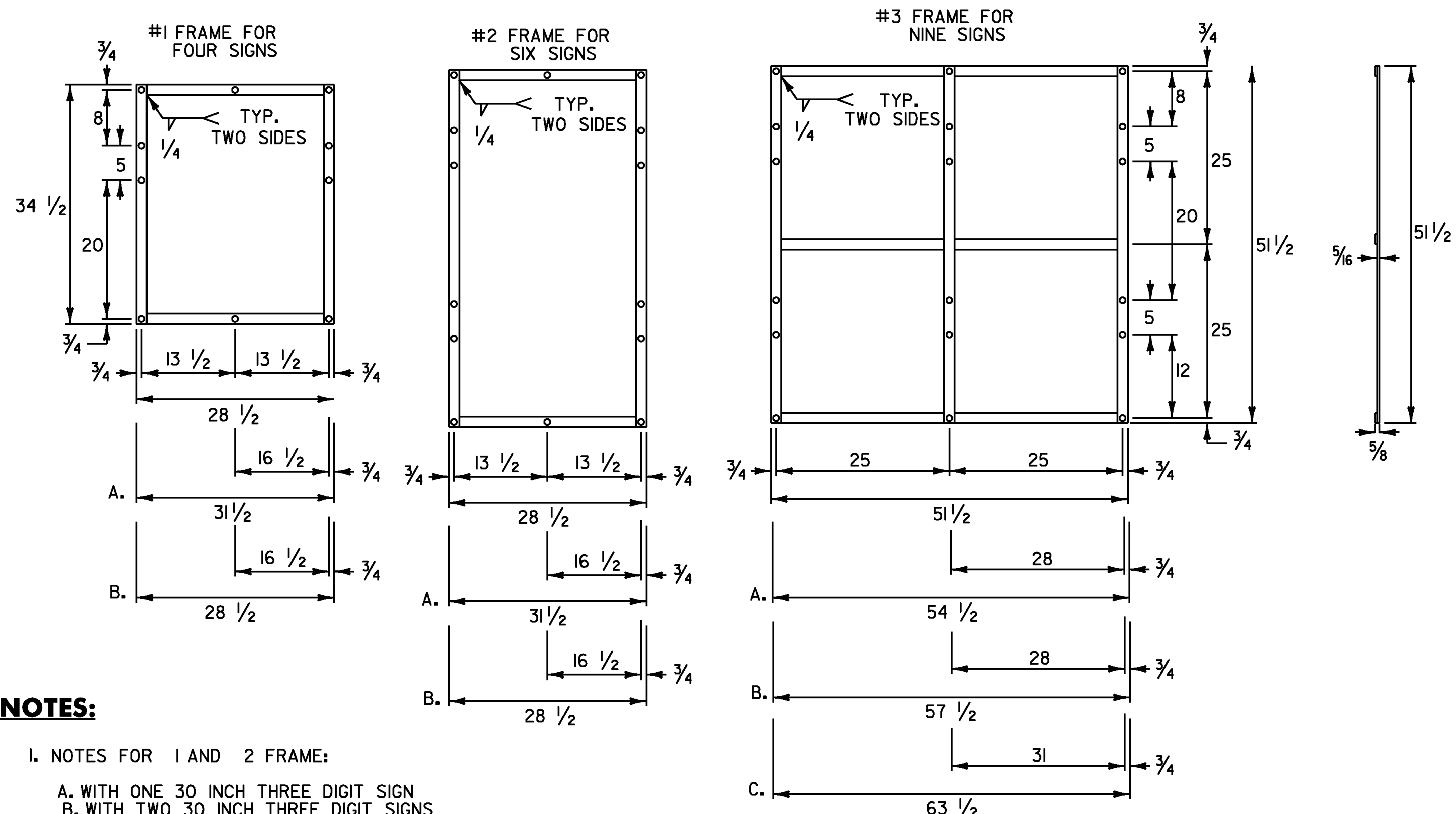


ROUTE MARKER ASSEMBLY FRAMES



NOTES:

1. NOTES FOR 1 AND 2 FRAME:

- A. WITH ONE 30 INCH THREE DIGIT SIGN
- B. WITH TWO 30 INCH THREE DIGIT SIGNS

2. NOTES FOR 3 FRAME:

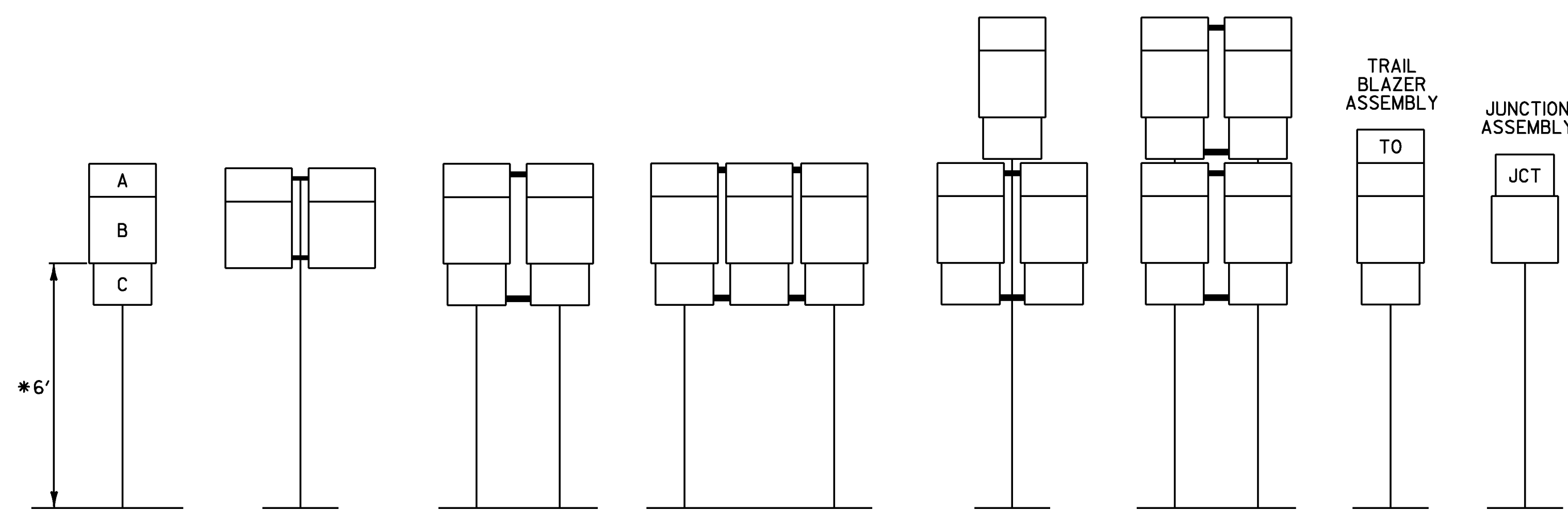
- A. WITH ONE 30 INCH THREE DIGIT SIGN IN AN OUTSIDE POSITION.
- B. WITH ONE 30 INCH THREE DIGIT SIGN IN THE CENTER POSITION OR TWO SUCH SIGNS IN THE OUTSIDE POSITIONS.
- C. WITH THREE 30 INCH THREE DIGIT SIGNS.

3. ALL HOLES SHALL BE 1/16 INCH DIAMETER. FOR OTHER SIGN COMBINATIONS THAN ABOVE, THE FRAME DIMENSIONS AND HOLE SPACING SHALL BE MODIFIED AS NECESSARY. THE FRAME SHALL BE PAINTED WITH ONE COAT OF PRIMER AND A SECOND COAT OF BLACK PAINT. THE PAINT SHALL BE OF THE TYPE USED ON EXTERIOR METAL SURFACES TO PREVENT METAL CORROSION.

4. STANDARD FRAMES SHALL BE 5/16 INCH x 1 1/2 INCH WELDED A-36 STEEL.

5. ALL DIMENSIONS SHOWN IN INCHES UNLESS OTHERWISE NOTED.

STANDARD MOUNTING OF ROUTE MARKER ASSEMBLIES



- A - CARDINAL DIRECTION MARKER
- B - ROUTE NUMBER
- C - ADVANCE TURN ARROW OR DIRECTIONAL ARROW

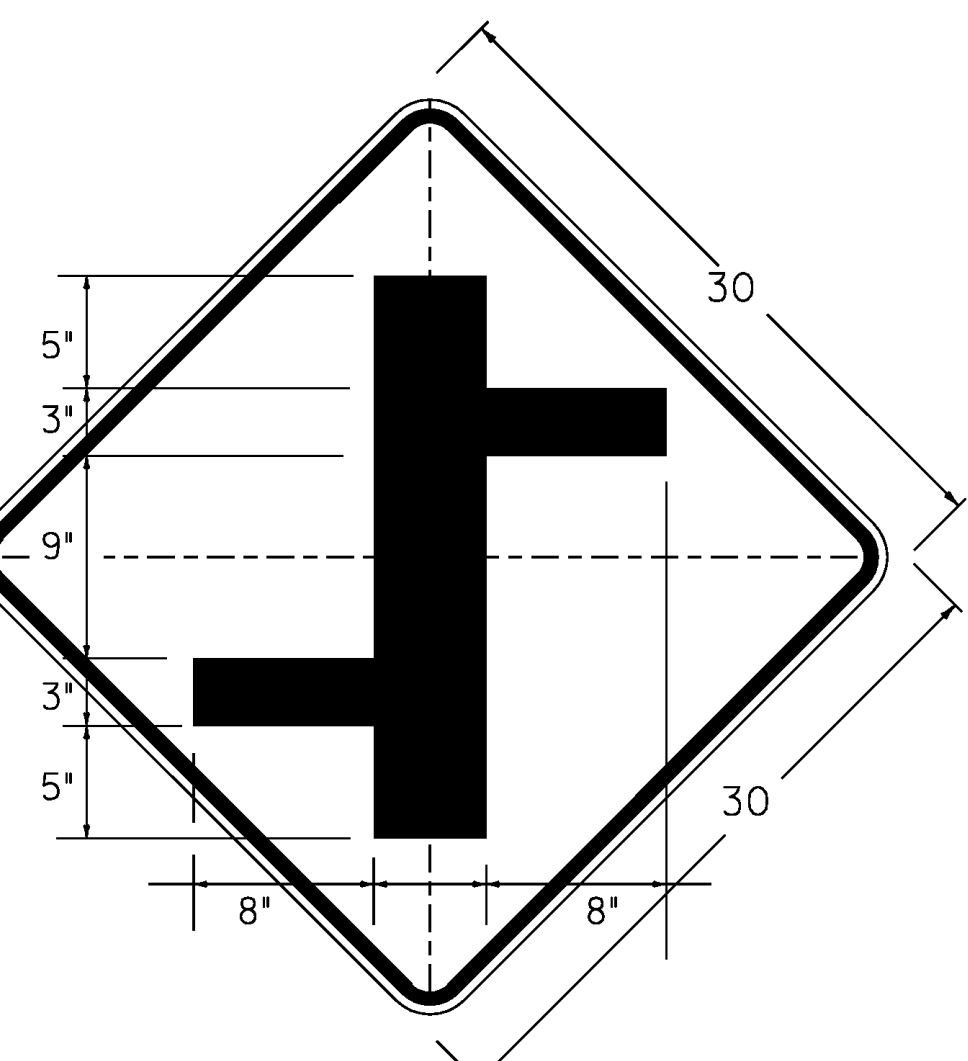
* WHERE PARKING OR PEDESTRIAN TRAFFIC WILL OCCUR IN THE IMMEDIATE VICINITY OF THESE SIGNS MINIMUM VERTICAL CLEARANCE SHALL BE INCREASED TO SEVEN FEET

INSTALLATION SEQUENCE:

IN MULTIPLE HORIZONTAL MOUNTINGS PLACE A ROUTE MARKER ASSEMBLY INDICATING A LEFT TURN ON THE LEFT SIDE OF THE ASSEMBLY; RIGHT TURN ON THE RIGHT SIDE. FOR VERTICALLY STACKED MOUNTINGS PLACE THE STRAIGHT THROUGH MOVE INDICATION ON TOP, THE LEFT OR RIGHT TURNS AS APPROPRIATE BENEATH.

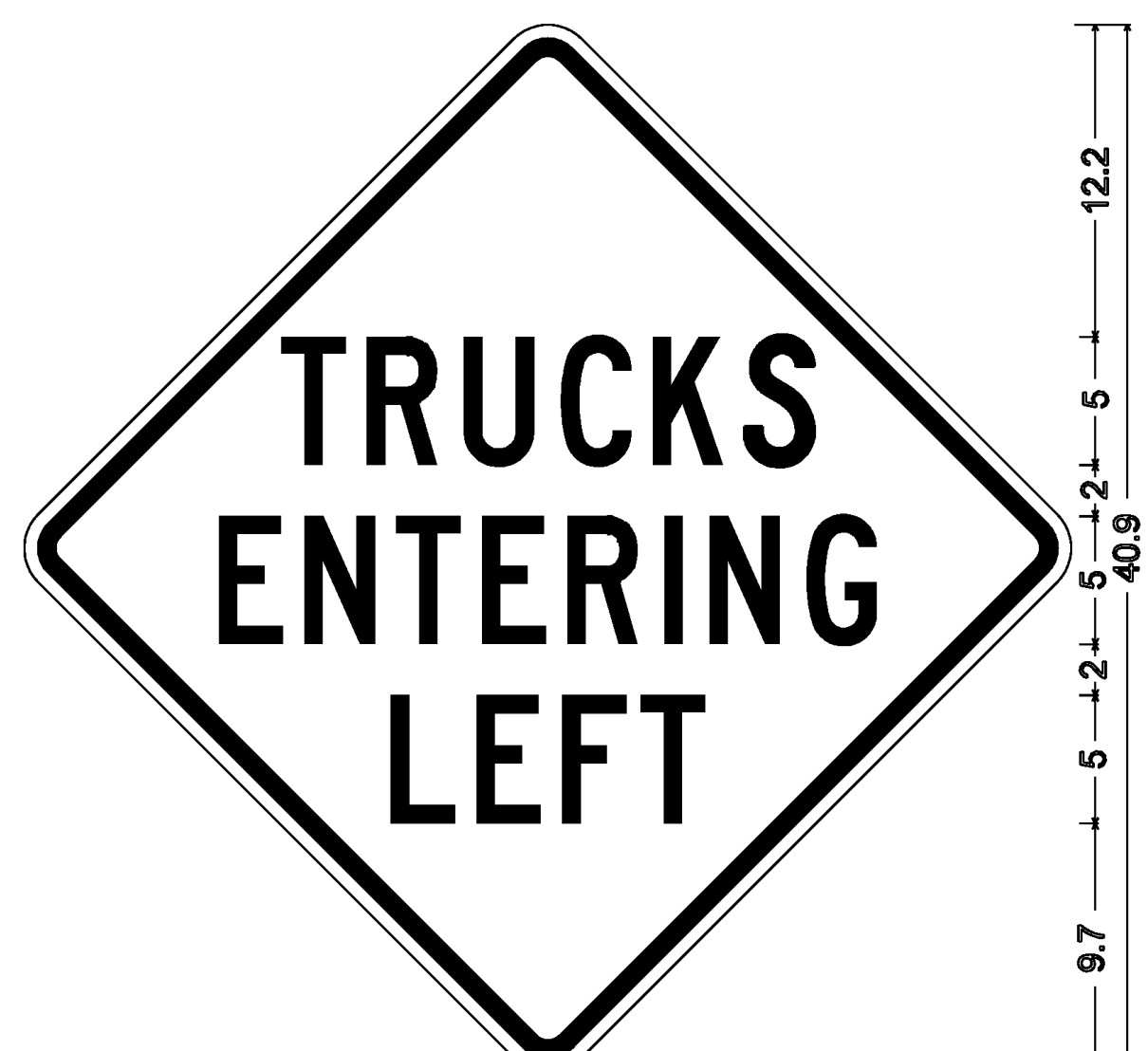
NOTES:

- 1. ALL DIMENSIONS SHOWN IN INCHES UNLESS OTHERWISE NOTED.
- 2. VERTICAL FRAME MEMBERS SHALL LINE UP WITH SIGN POST ON WHICH THEY ARE MOUNTED.



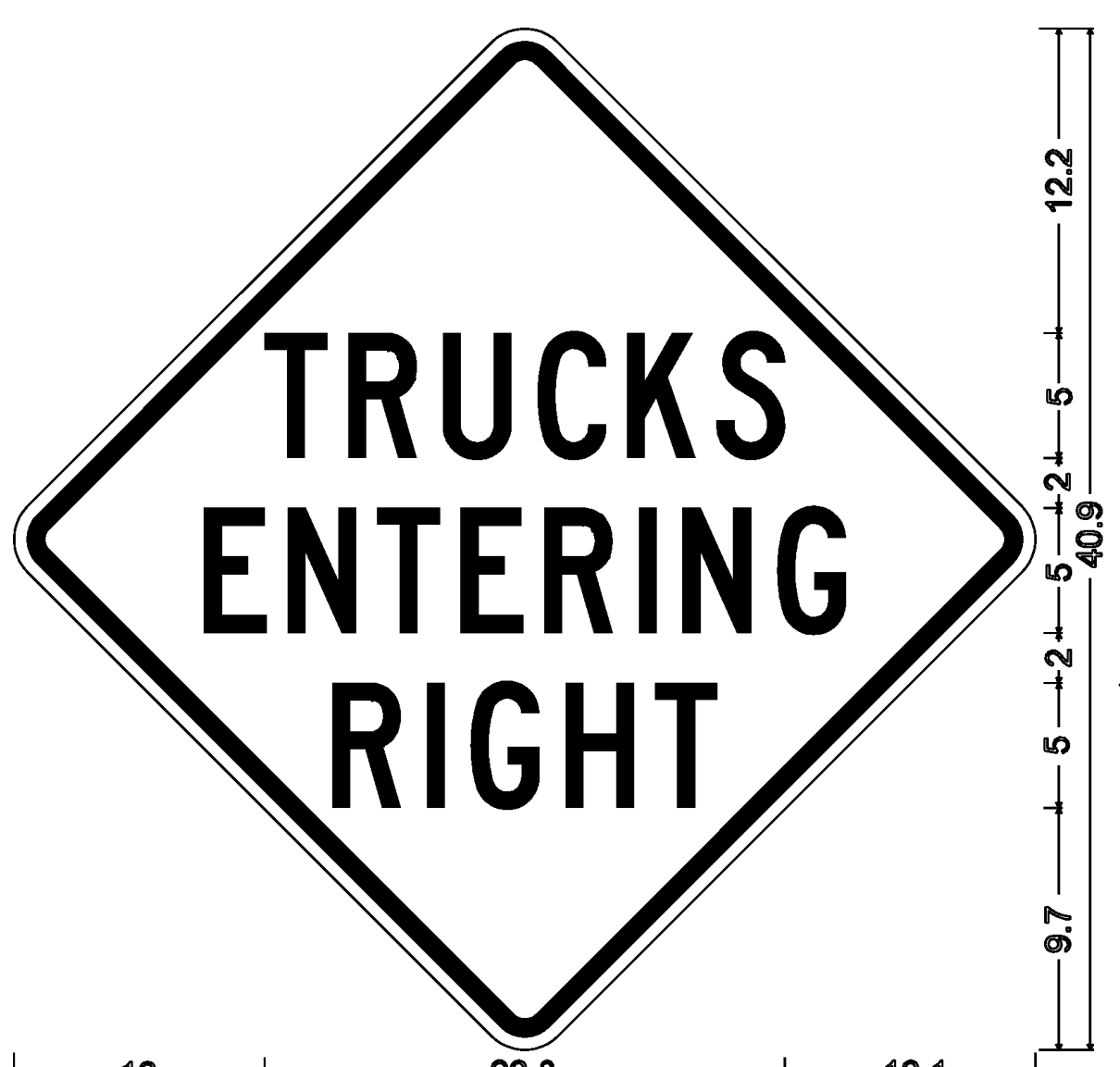
W2-1Me

DIMENSIONS NOT SHOWN FOR THIS DETAIL SHALL CONFORM TO THE LATEST EDITION OF THE 2003 MUTCD FOR SIGN DETAIL W2-1. UNLESS OTHERWISE NOTED FOR THIS DETAIL



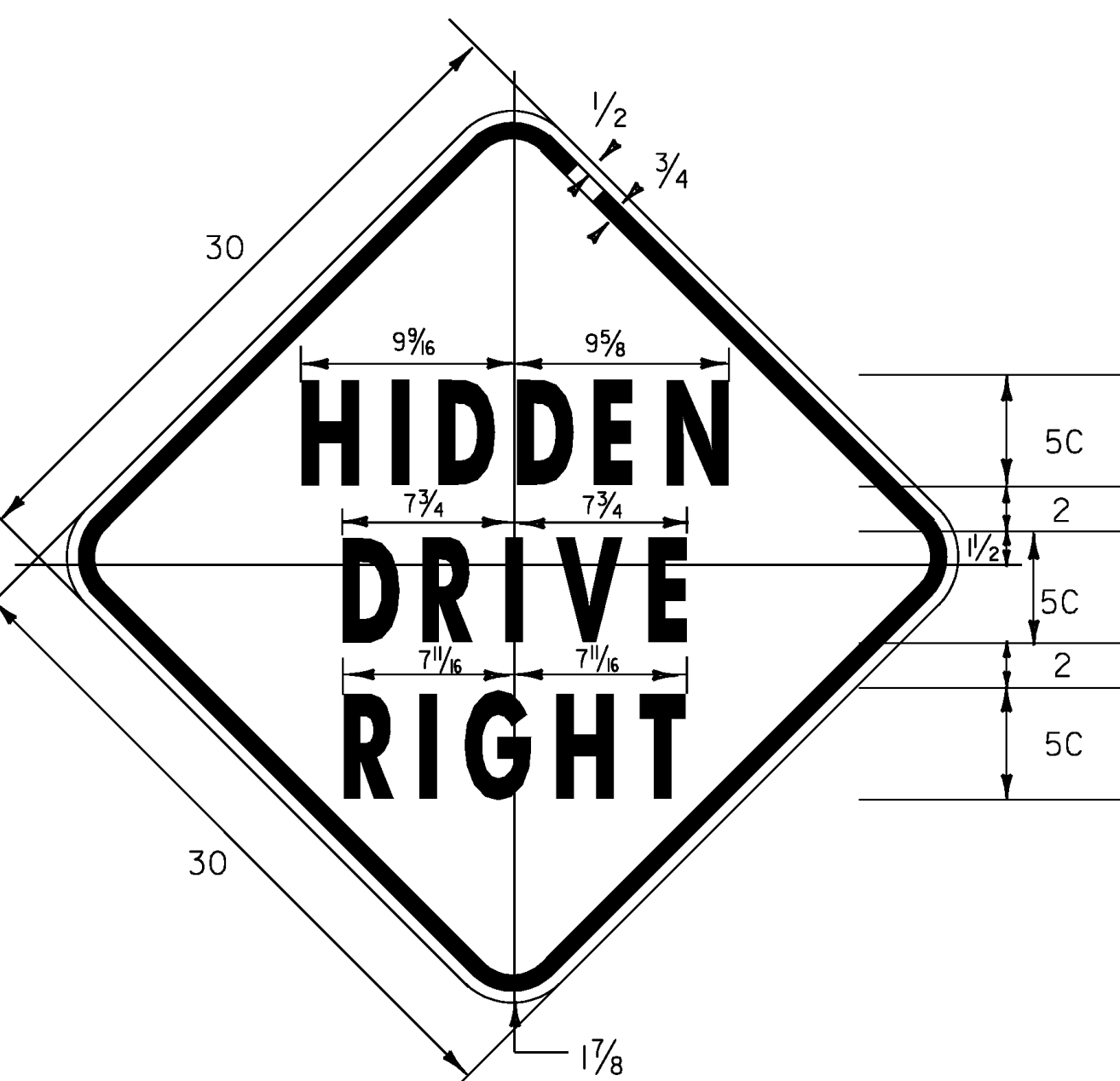
VW-084

30" SQUARE SIGN FACE
1.875" RADIUS, 0.75" BORDER, 0.50" INDENT
COLORS: LEGEND - BLACK
BACKGROUND - YELLOW
TEXT STYLE: C



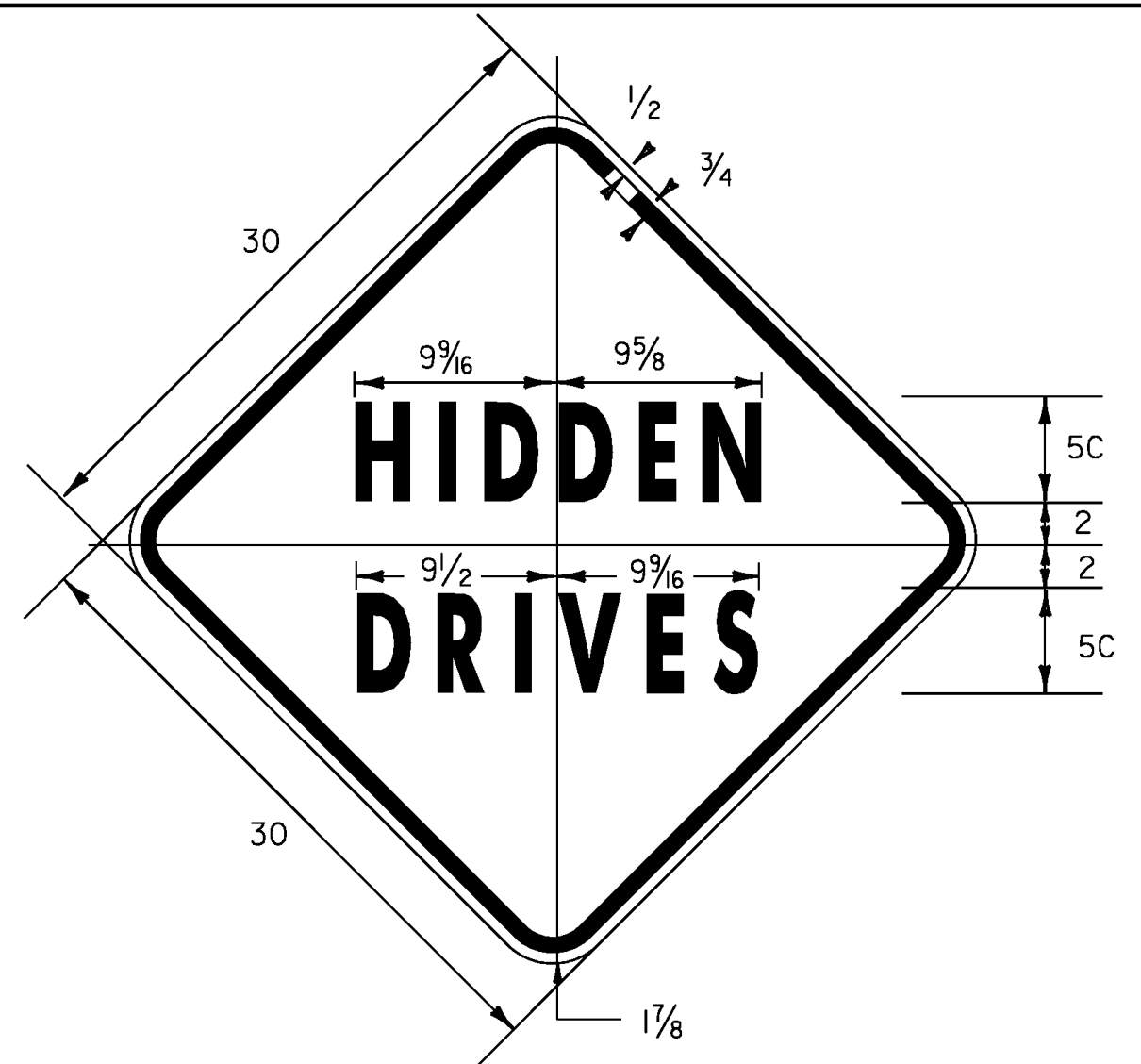
VW-081

30" SQUARE SIGN FACE
1.875" RADIUS, 0.75" BORDER, 0.50" INDENT
COLORS: LEGEND - BLACK
BACKGROUND - YELLOW
TEXT STYLE: C



VW-054

COLORS: LEGEND - BLACK
BACKGROUND - YELLOW



VW-060

COLORS: LEGEND - BLACK
BACKGROUND - YELLOW

PROJECT NAME: STATEWIDE - NORTHWEST REGION

PROJECT NUMBER: STPG SIGN (30)

FILE NAME: 10b008TS.DGN
PROJECT LEADER: A. GAMBLE
DESIGNED BY: T. GUAZZONI
SIGN DETAILS 3

PLOT DATE: 12-AUG-2010
DRAWN BY: T. GUAZZONI
CHECKED BY: A. GAMBLE
SHEET 7 OF 131