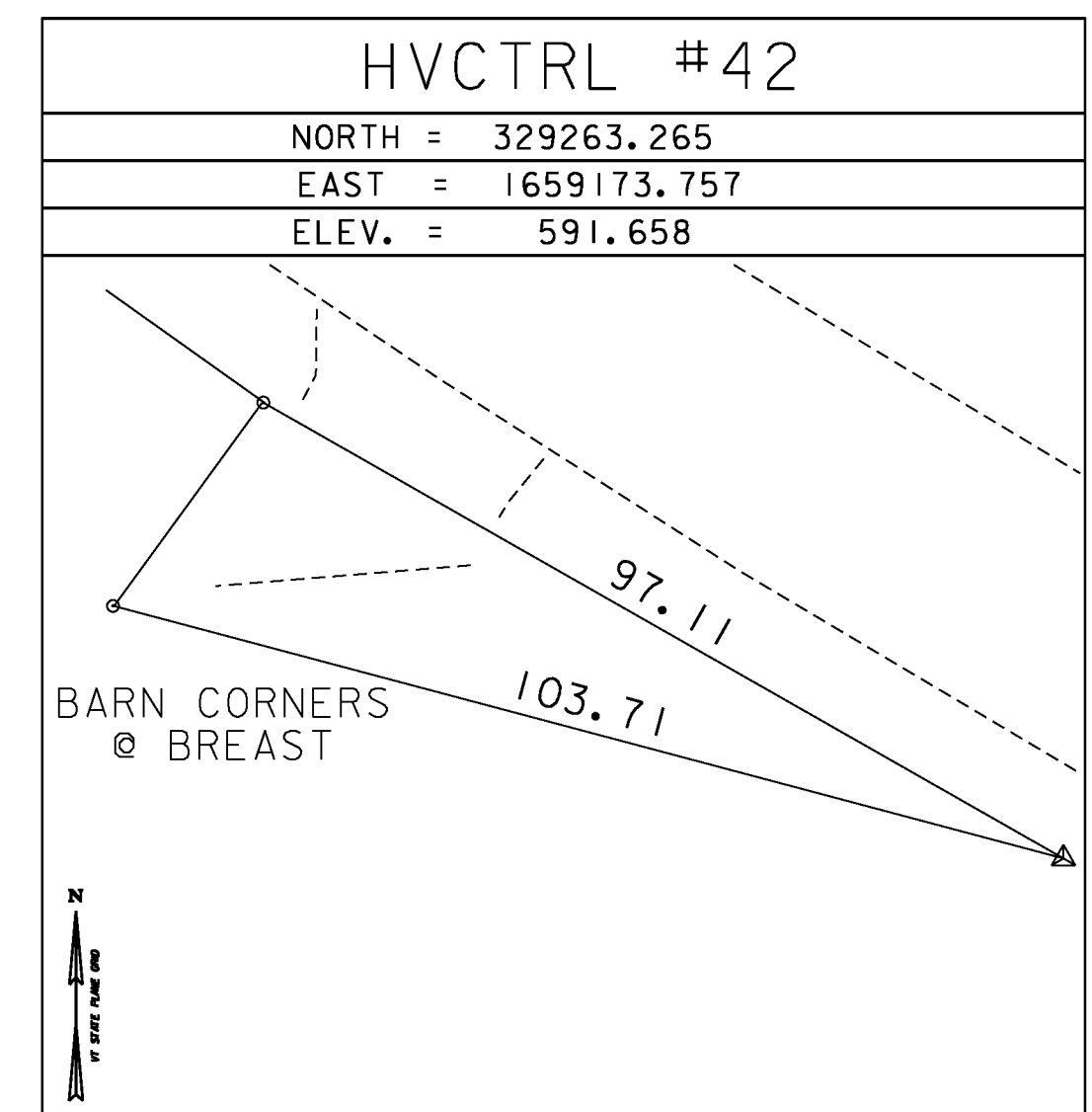
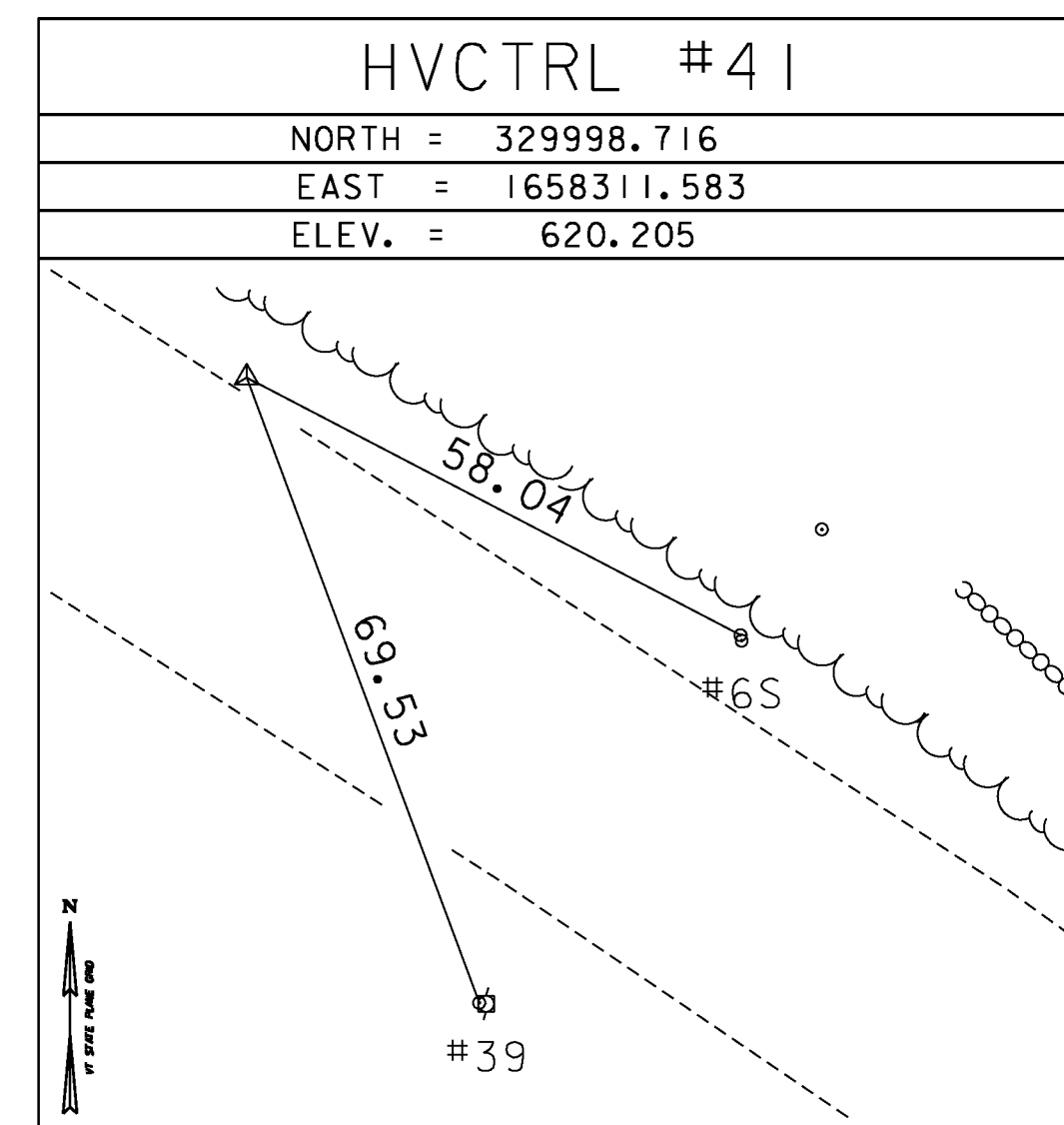
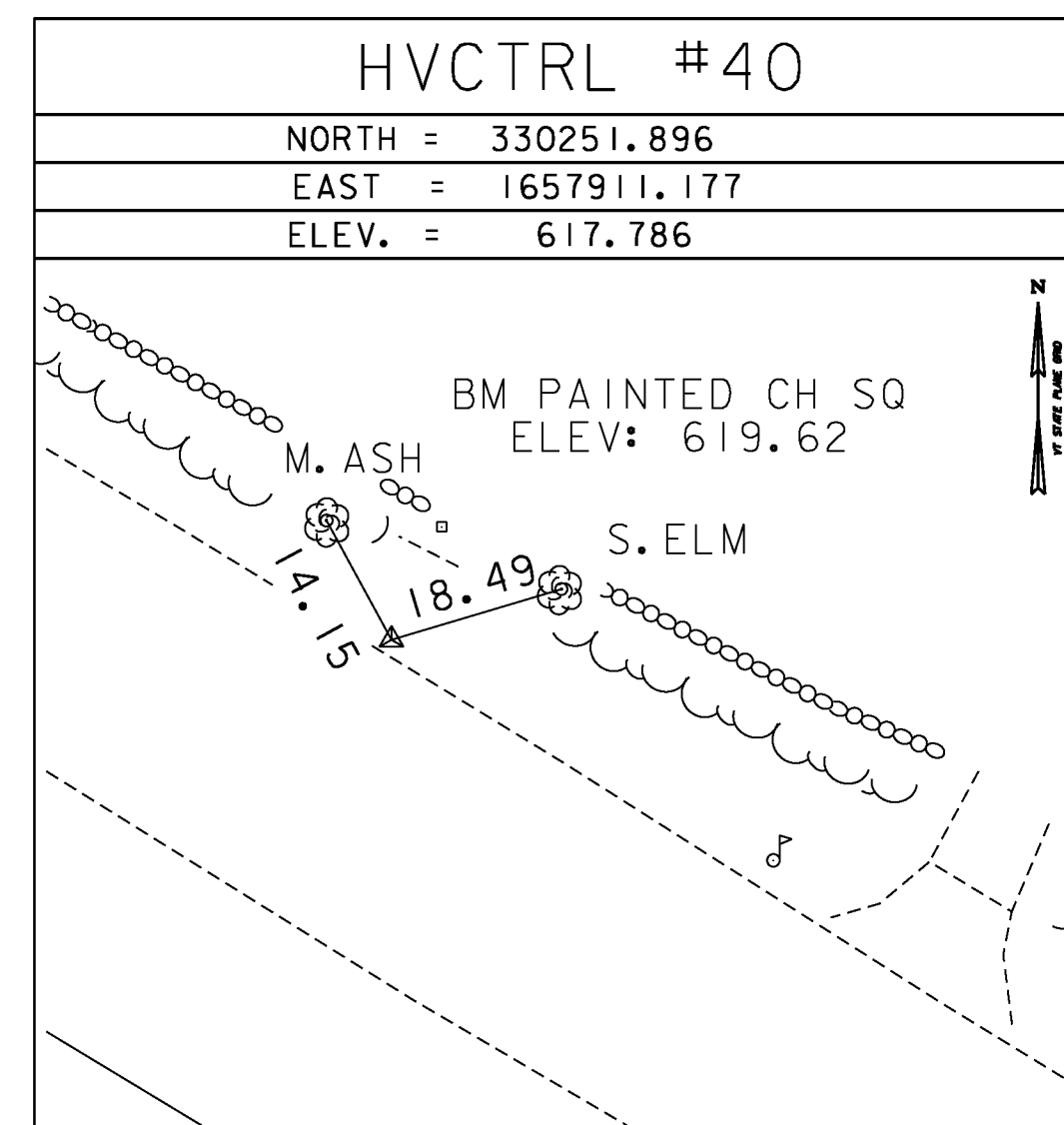
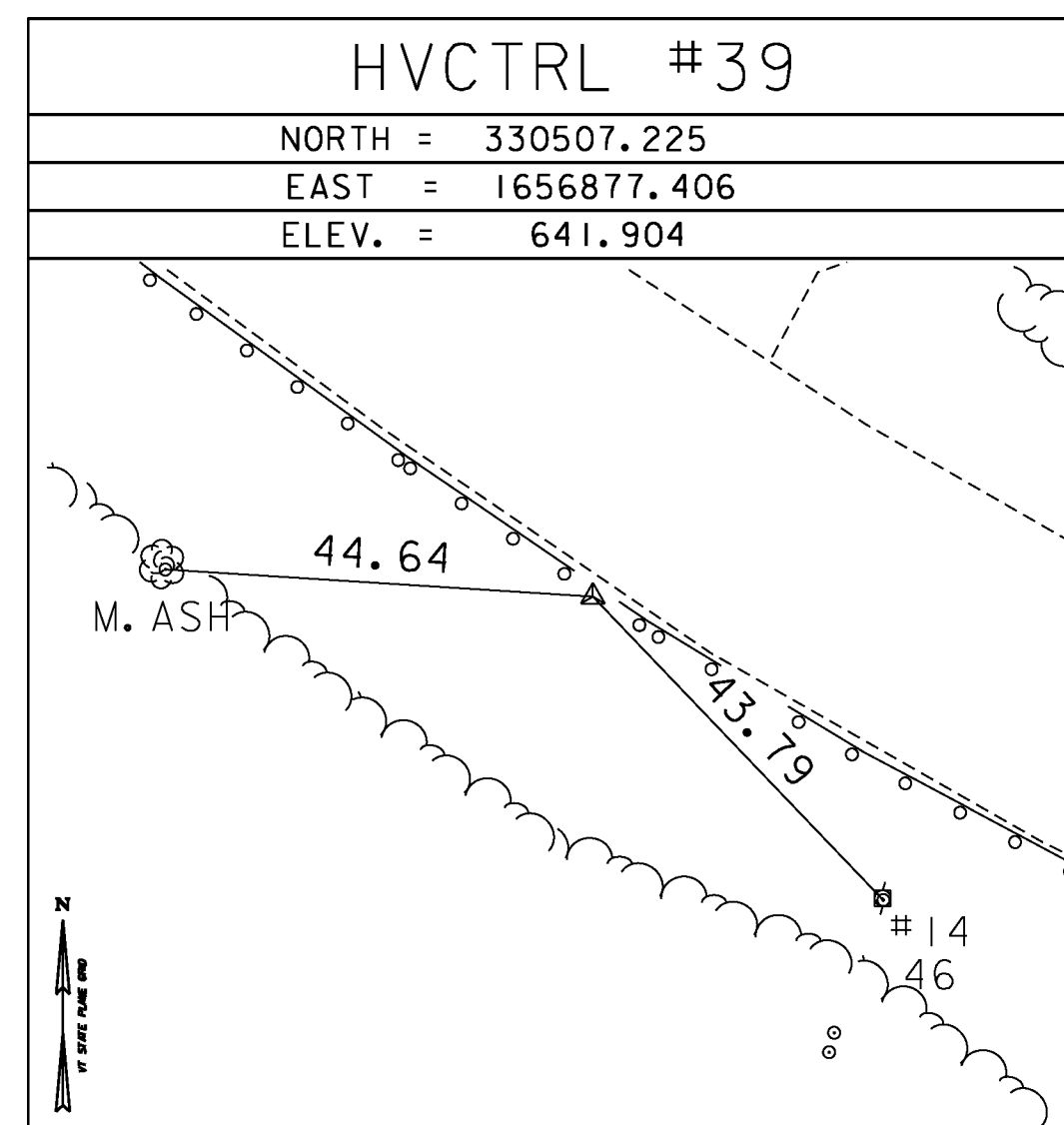
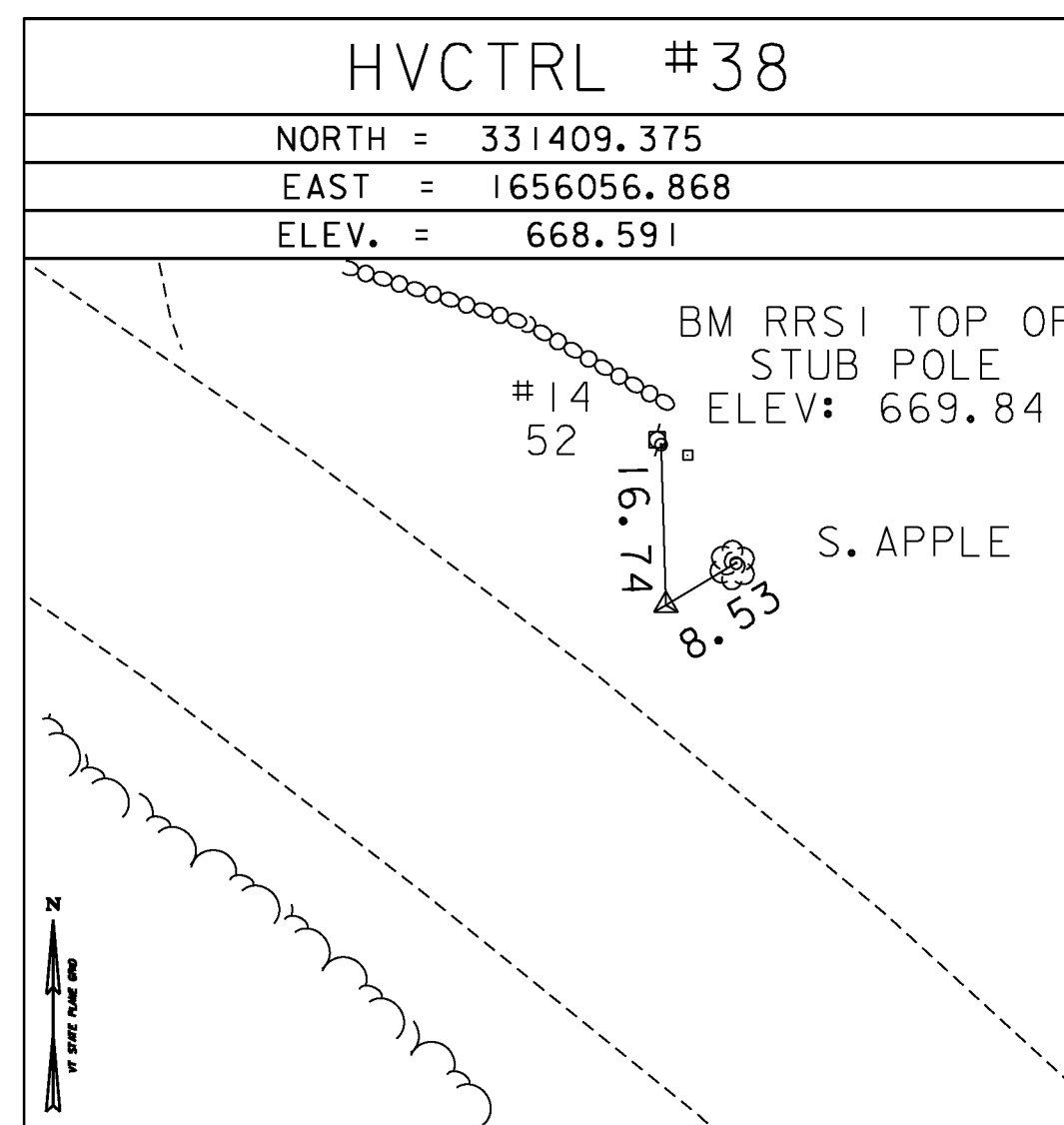
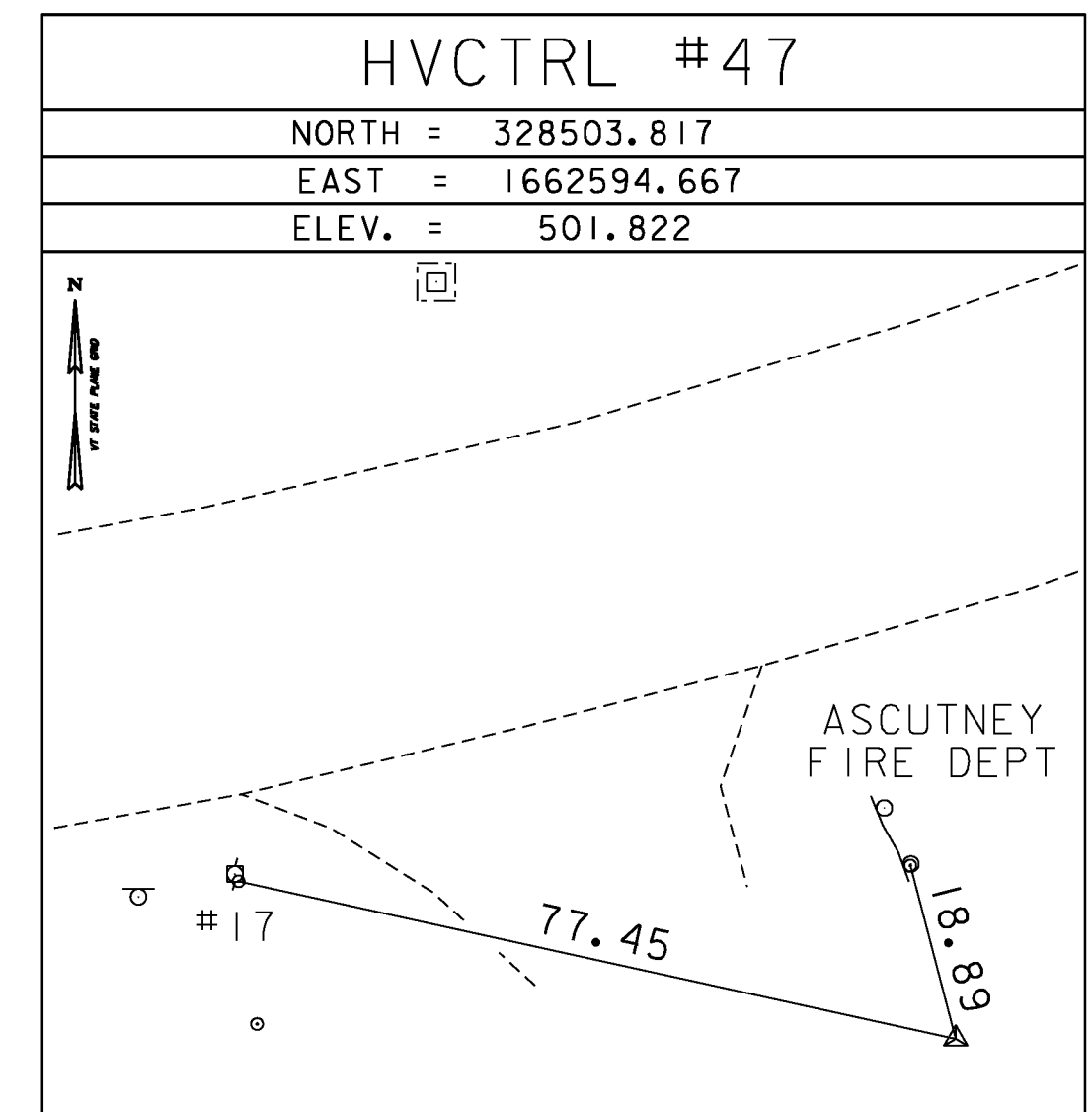
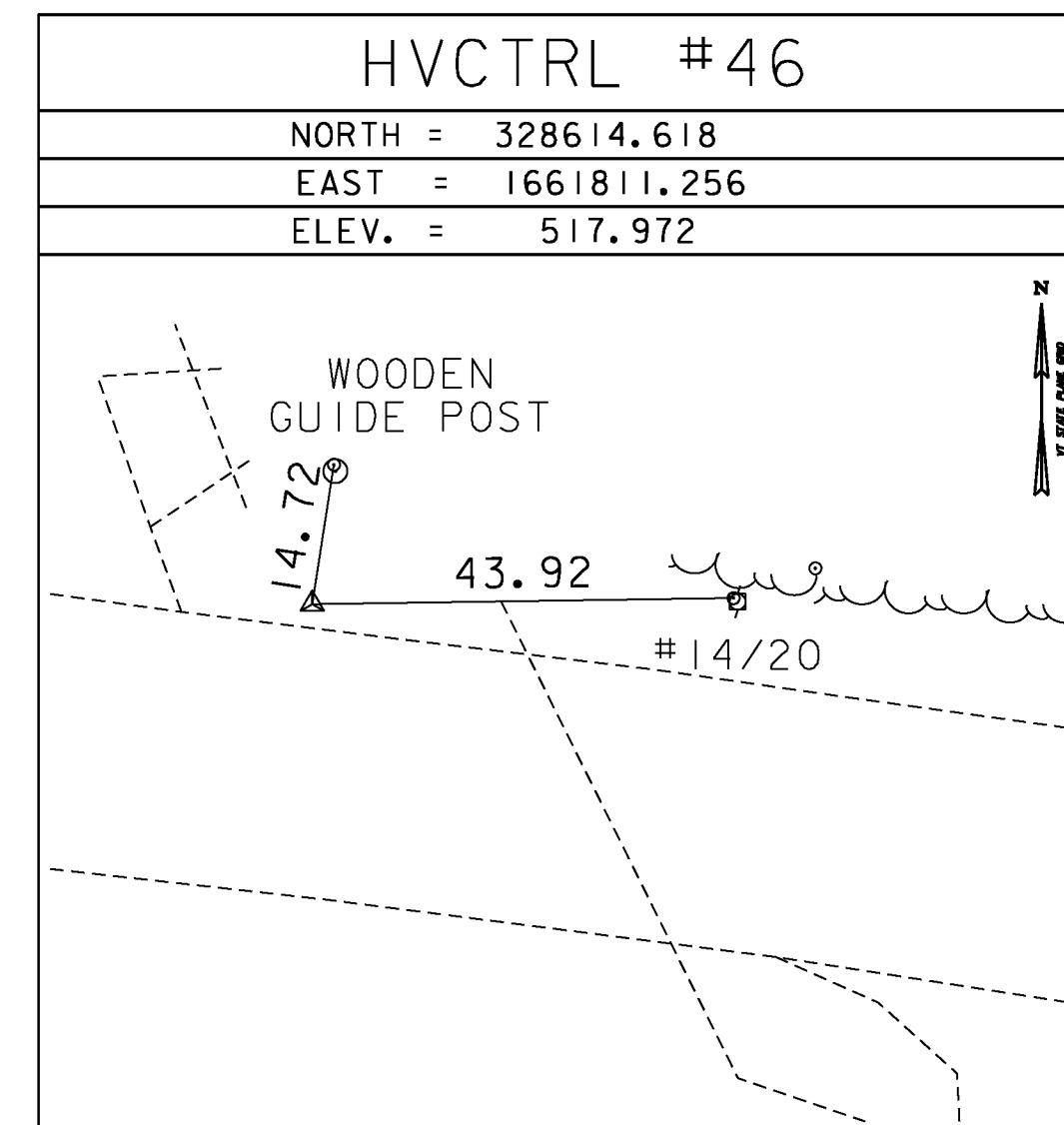
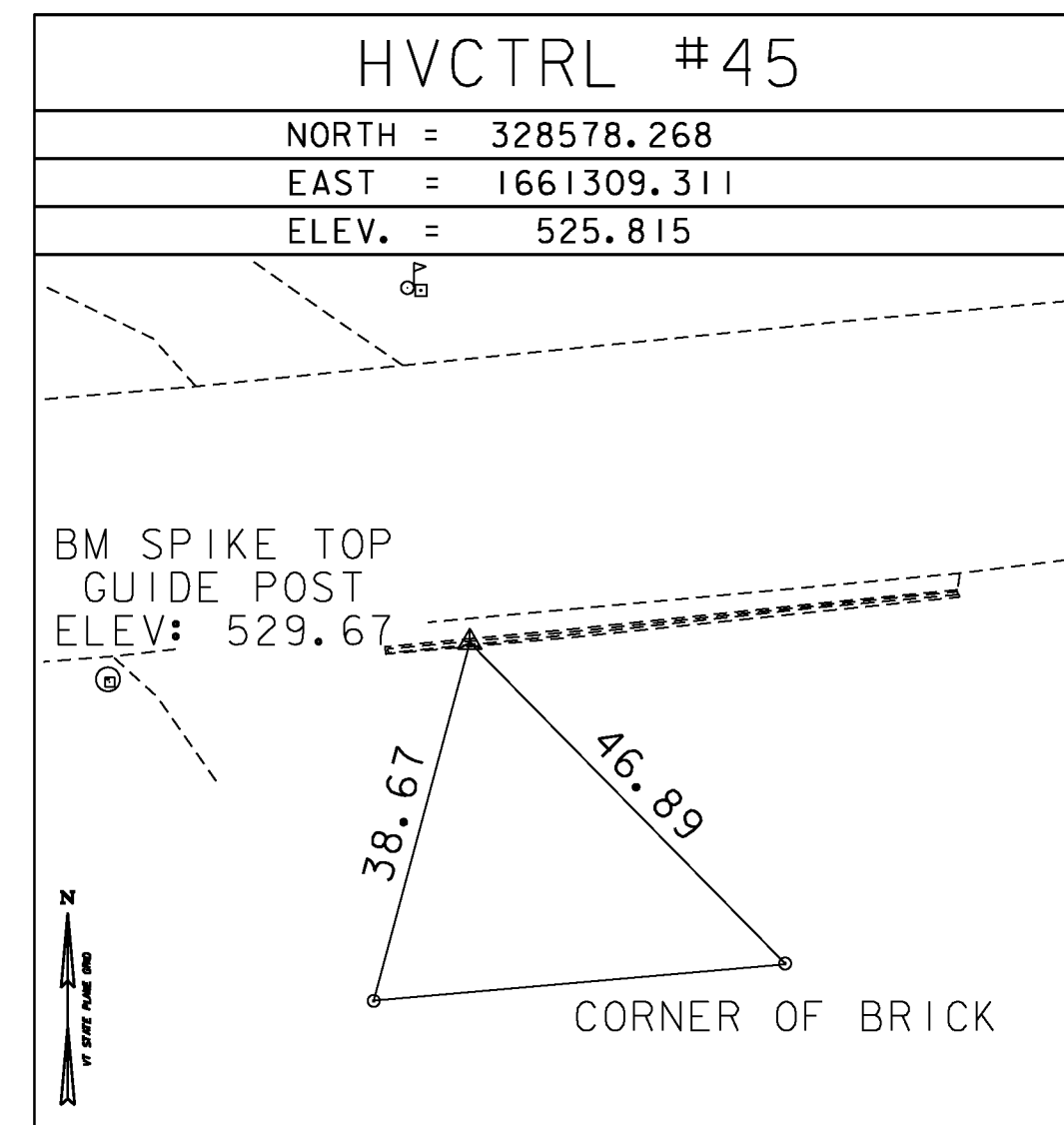
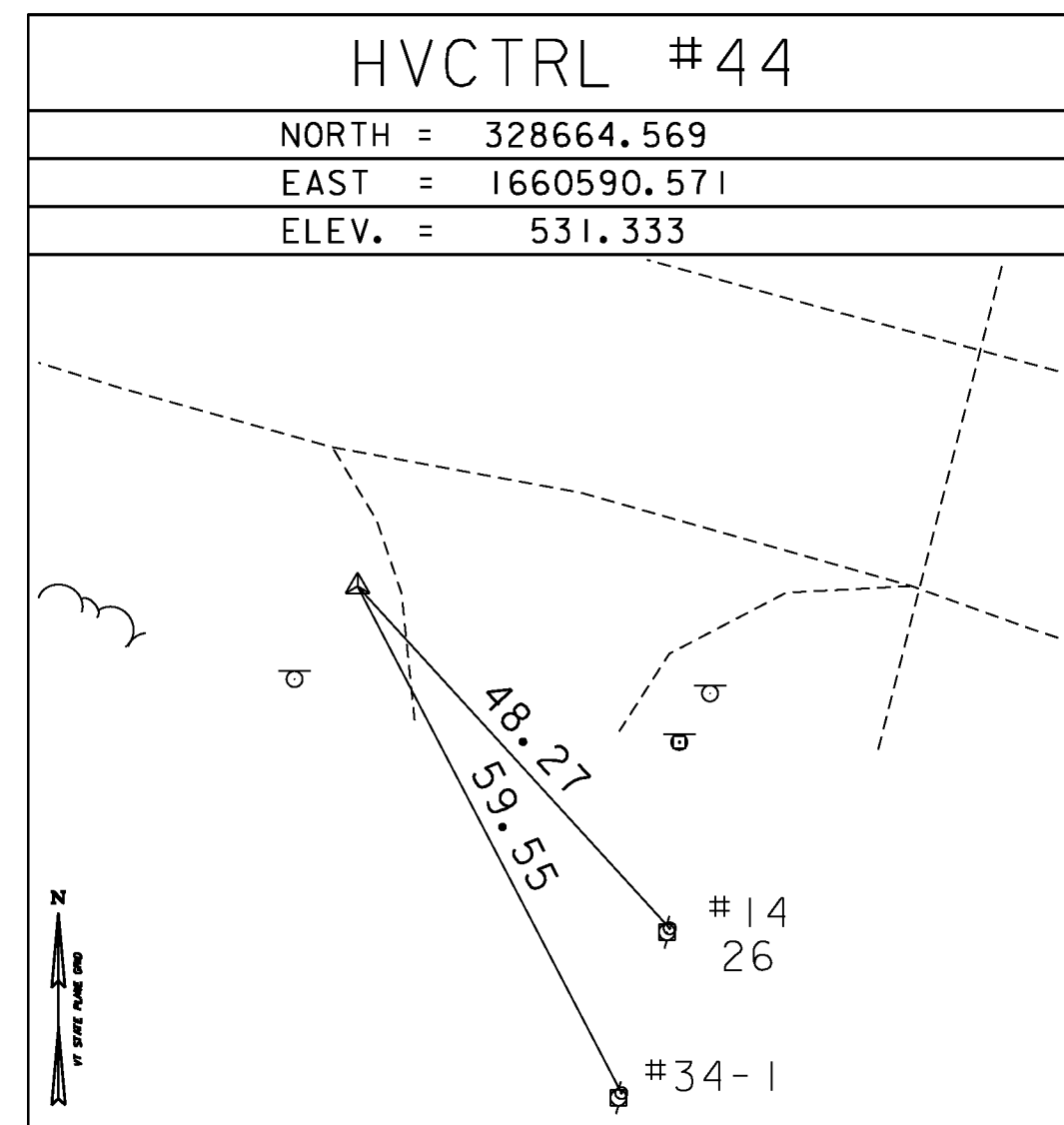
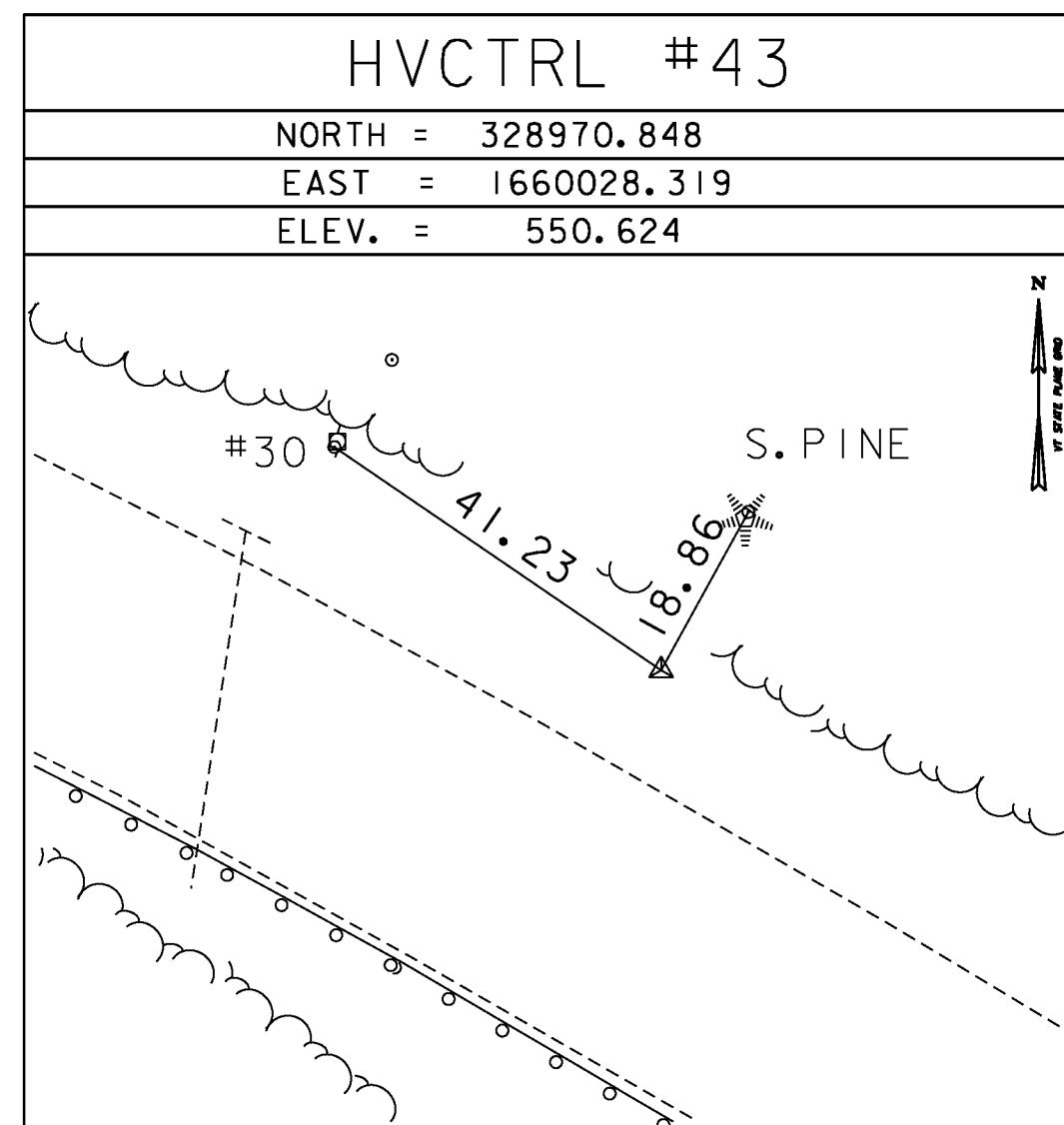


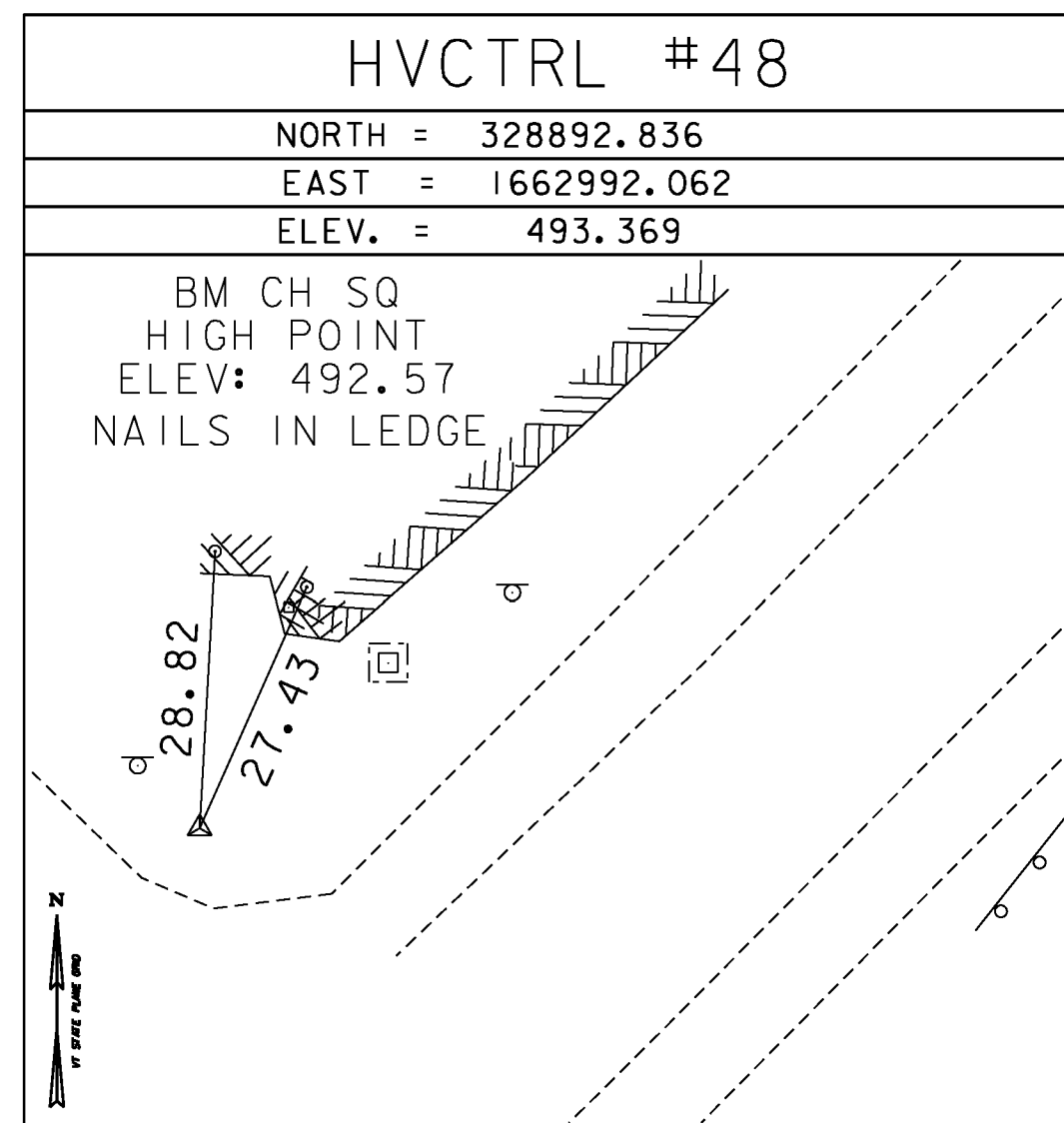
TRAVERSE TIES



TRAVERSE TIES



TRAVERSE TIES

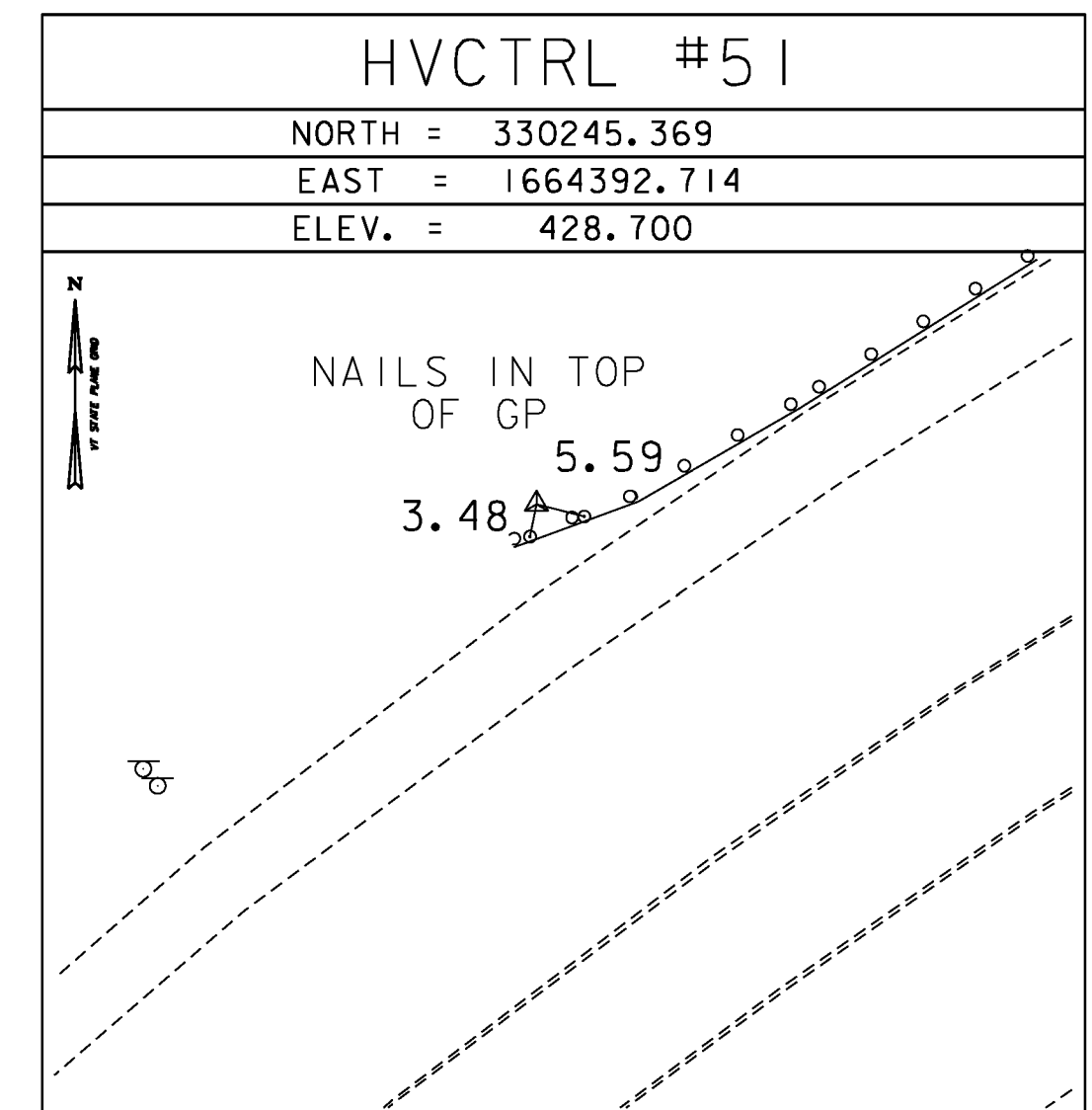
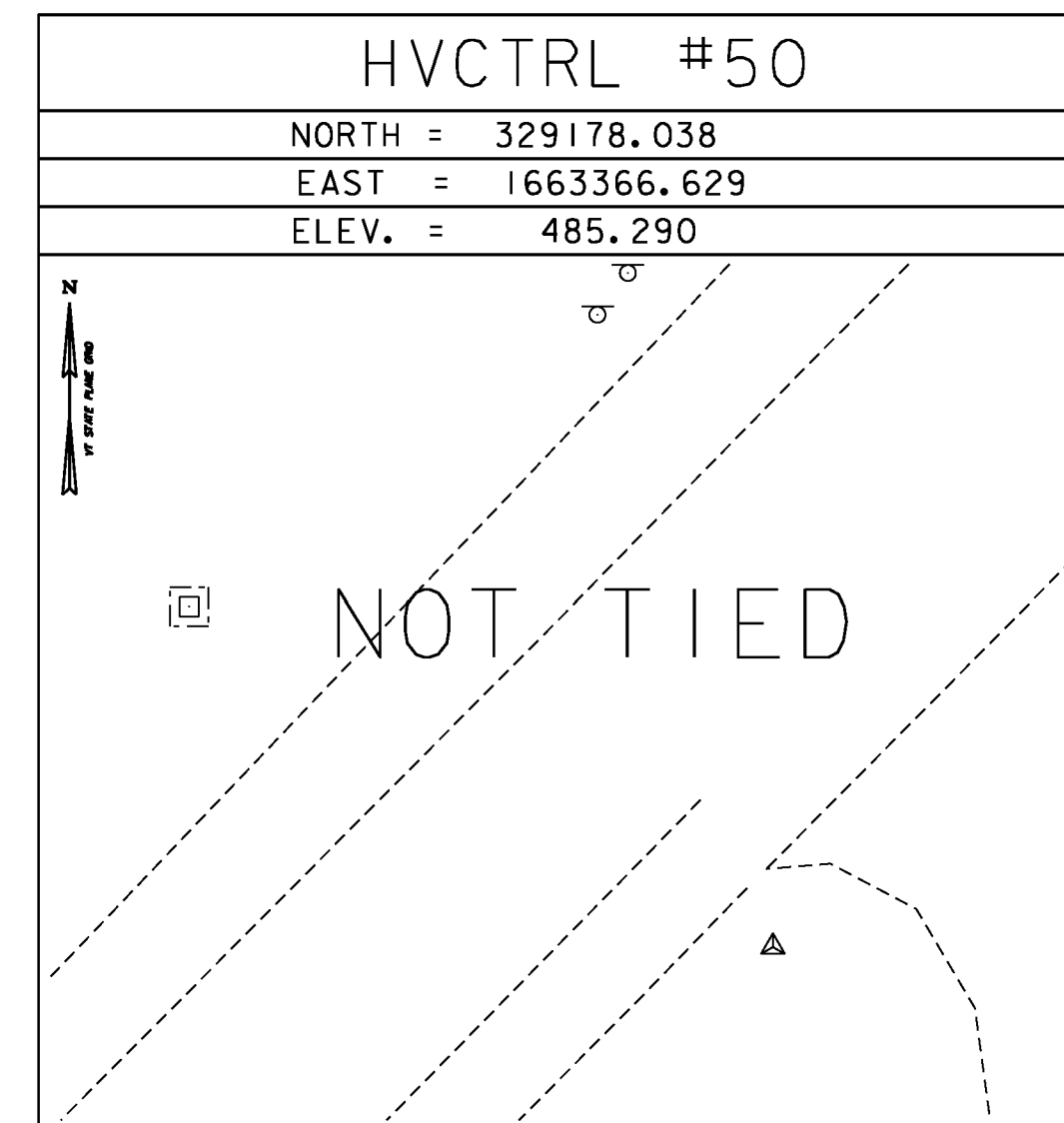


**HVCTRL #49**

191 EXIT 8

NORTH = 328857.664  
EAST = 1663159.661  
ELEV. = 509.239

GENERAL LOCATION, WEATHERSFIELD, VT. THE MARK IS LOCATED IN THE MEDIAN JUST SOUTH OF THE 1-91 BRIDGES OVER VT ROUTE 131 AT EXIT 8 (ASCUTNEY EXIT), BETWEEN 1-91 NORTHBOUND MILE MARKERS 51.30 AND 51.35. IT IS IN AN AREA BORDERED BY A STEEL BEAM GUARD RAIL. THE MARK IS SET FLUSH WITH THE GROUND SURFACE IN THE TOP OF A 30 CM (12 INCH) DIAMETER CONCRETE MONUMENT. IT IS 2.6 M (8.5 FT) EAST OF AND ABOUT 0.2 M (0.7 FT) LOWER THAN THE EAST EDGE OF PAVEMENT OF THE 1-91 SOUTHBOUND LANE, 10.4 M (34.1 FT) WEST OF AND ABOUT 0.9 M (3.0 FT) HIGHER THAN THE WEST EDGE OF PAVEMENT OF THE 1-91 NORTHBOUND LANE, 9.7 M (31.8 FT) SOUTH-SOUTHEAST OF THE SOUTHEAST CORNER OF THE CONCRETE CURB OF THE SOUTHBOUND BRIDGE, 25.6 M (84.0 FT) SOUTHWEST OF THE SOUTHWEST CORNER OF THE CONCRETE CURB OF THE NORTHBOUND BRIDGE, 76.8 M (252.0 FT) NORTH OF THE CENTER OF A 60 CM (24 INCH) SQUARE METAL DRAIN GRATE AND 0.3 M (1.0 FT) NORTH-NORTHWEST OF A FIBERGLASS WITNESS POST.



|            |             |
|------------|-------------|
| DATUM      |             |
| VERTICAL   | NAVD 88     |
| HORIZONTAL | NAD 83 (96) |
| ADJUSTMENT | COMPASS     |

|                 |                          |
|-----------------|--------------------------|
| PROJECT NAME:   | WEATHERSFIELD            |
| PROJECT NUMBER: | STP 2913(I) / NH 2948(I) |
| FILE NAME:      | survey\10c228t1.dgn      |
| PROJECT LEADER: | M. Fowler                |
| DESIGNED BY:    | VTrans                   |
| TIE SHEET 4     |                          |
| PLOT DATE:      | 2/7/2013                 |
| DRAWN BY:       | R. Bullock               |
| CHECKED BY:     | VTrans                   |
| SHEET 6 OF 234  |                          |