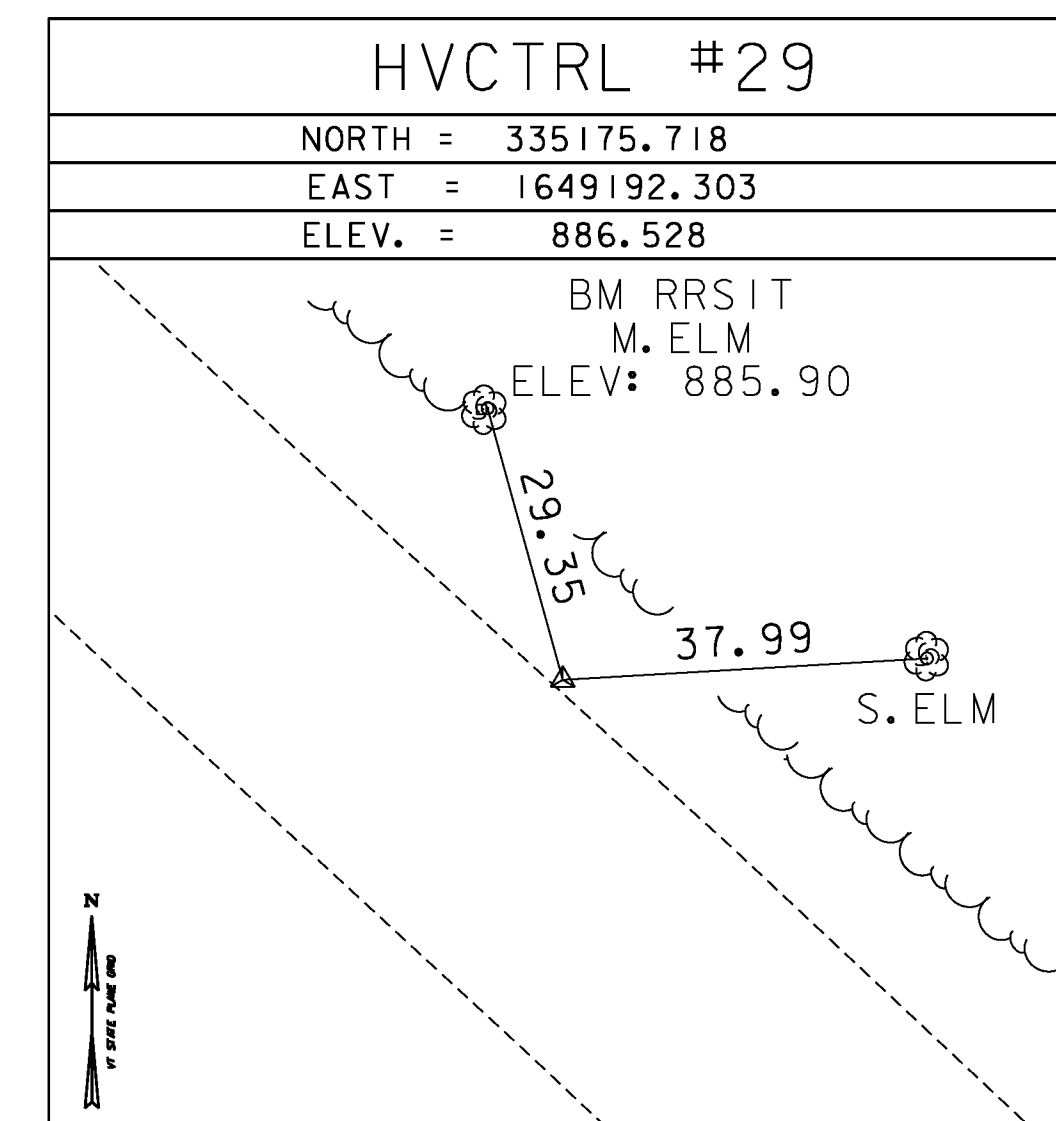
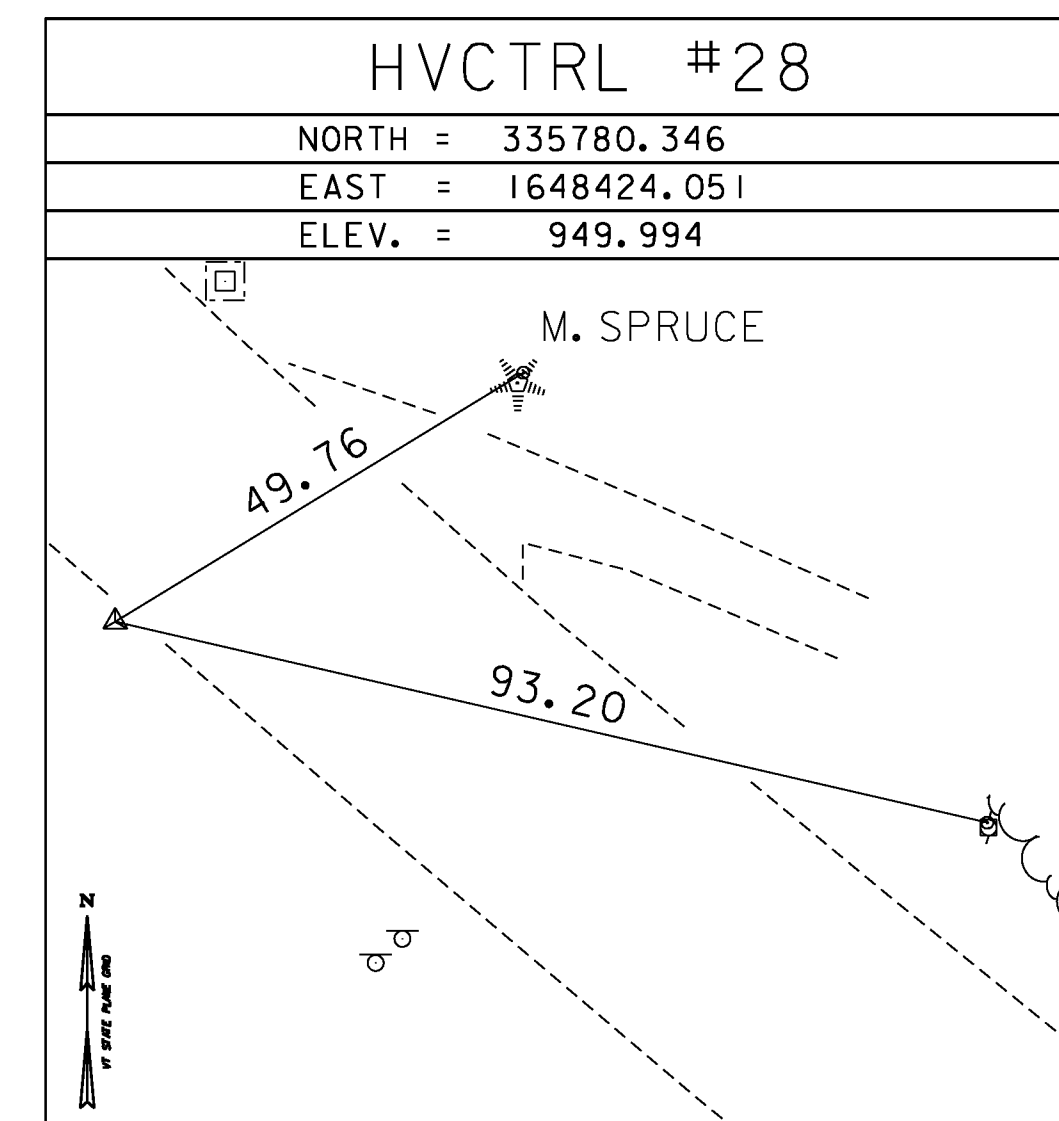
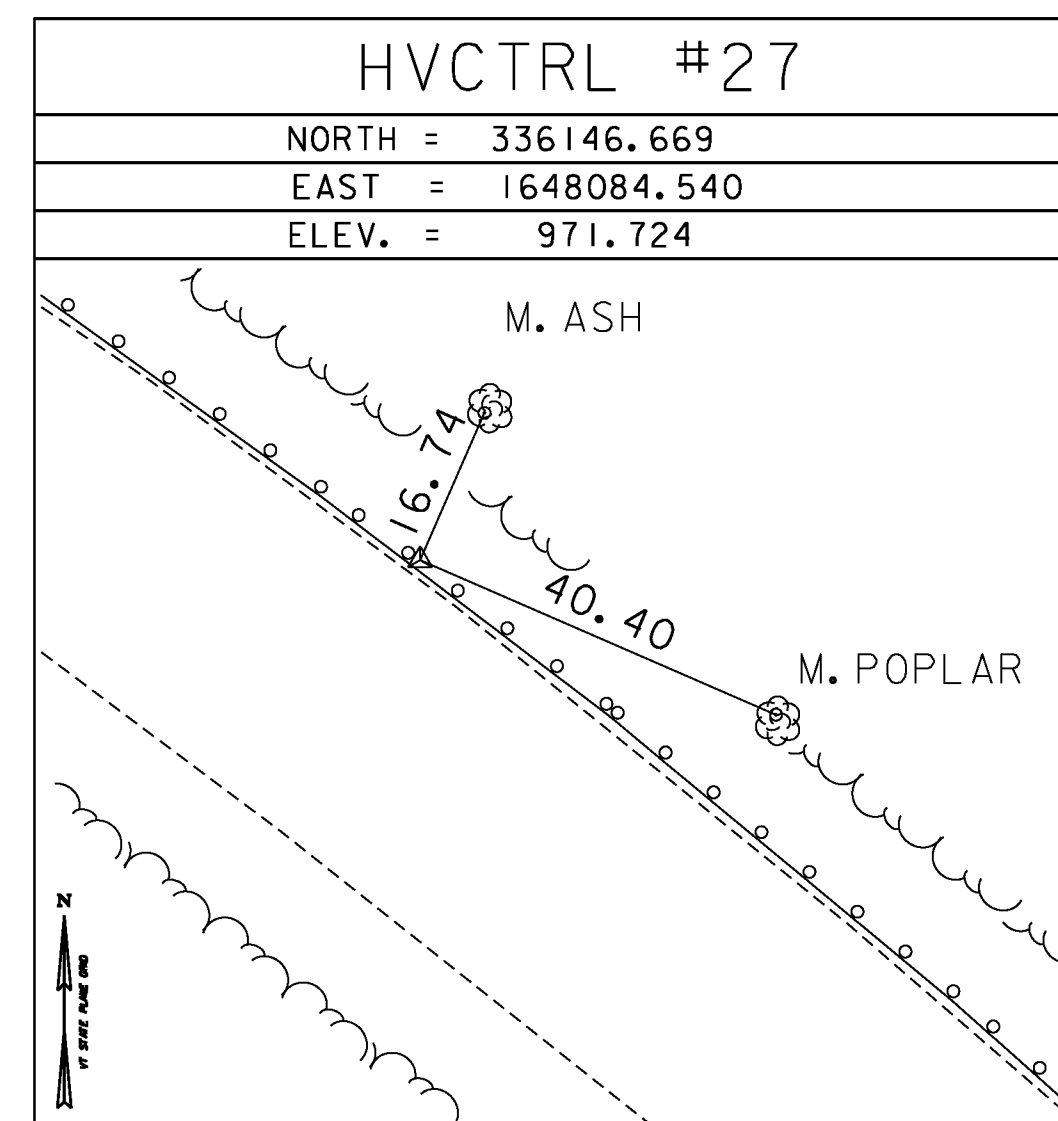
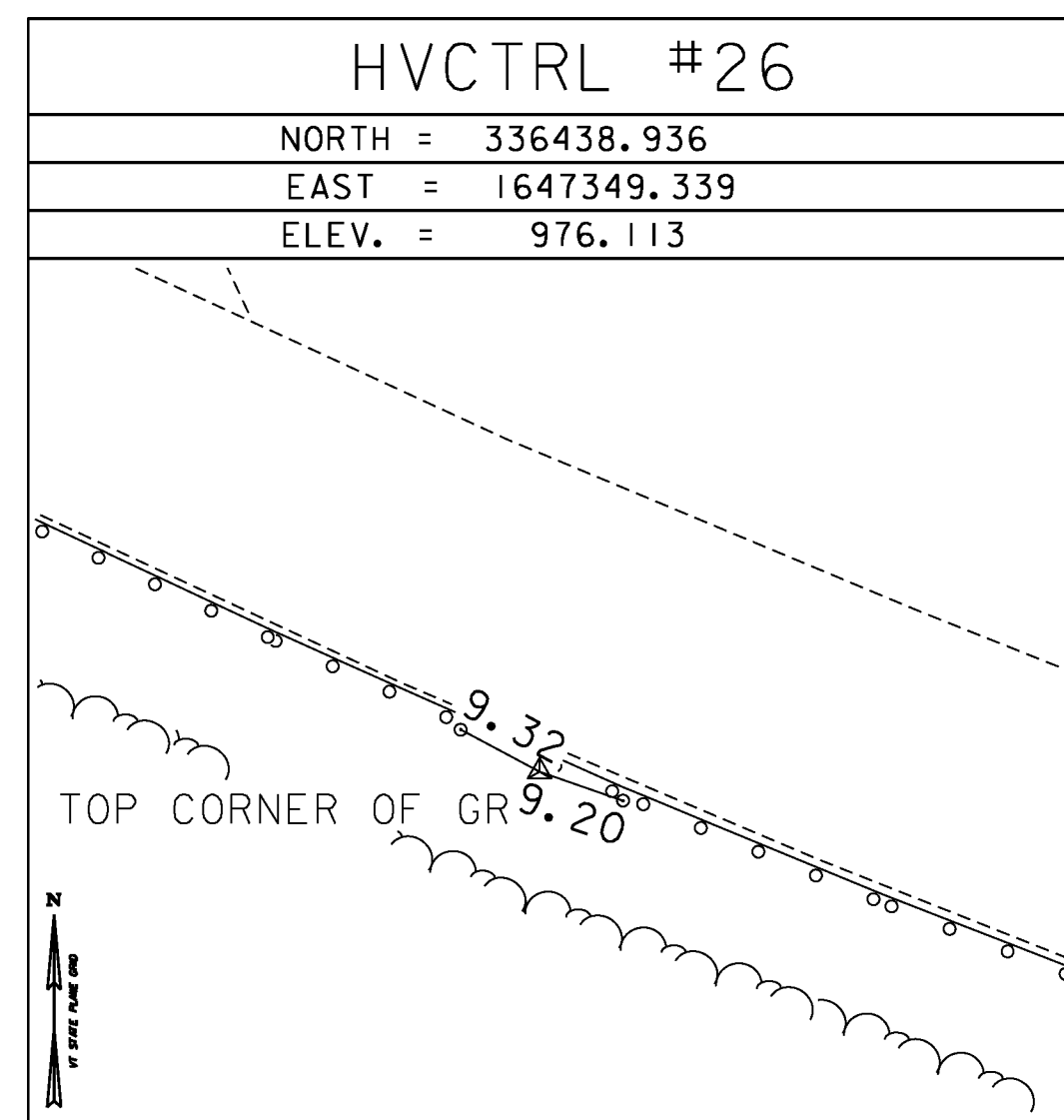
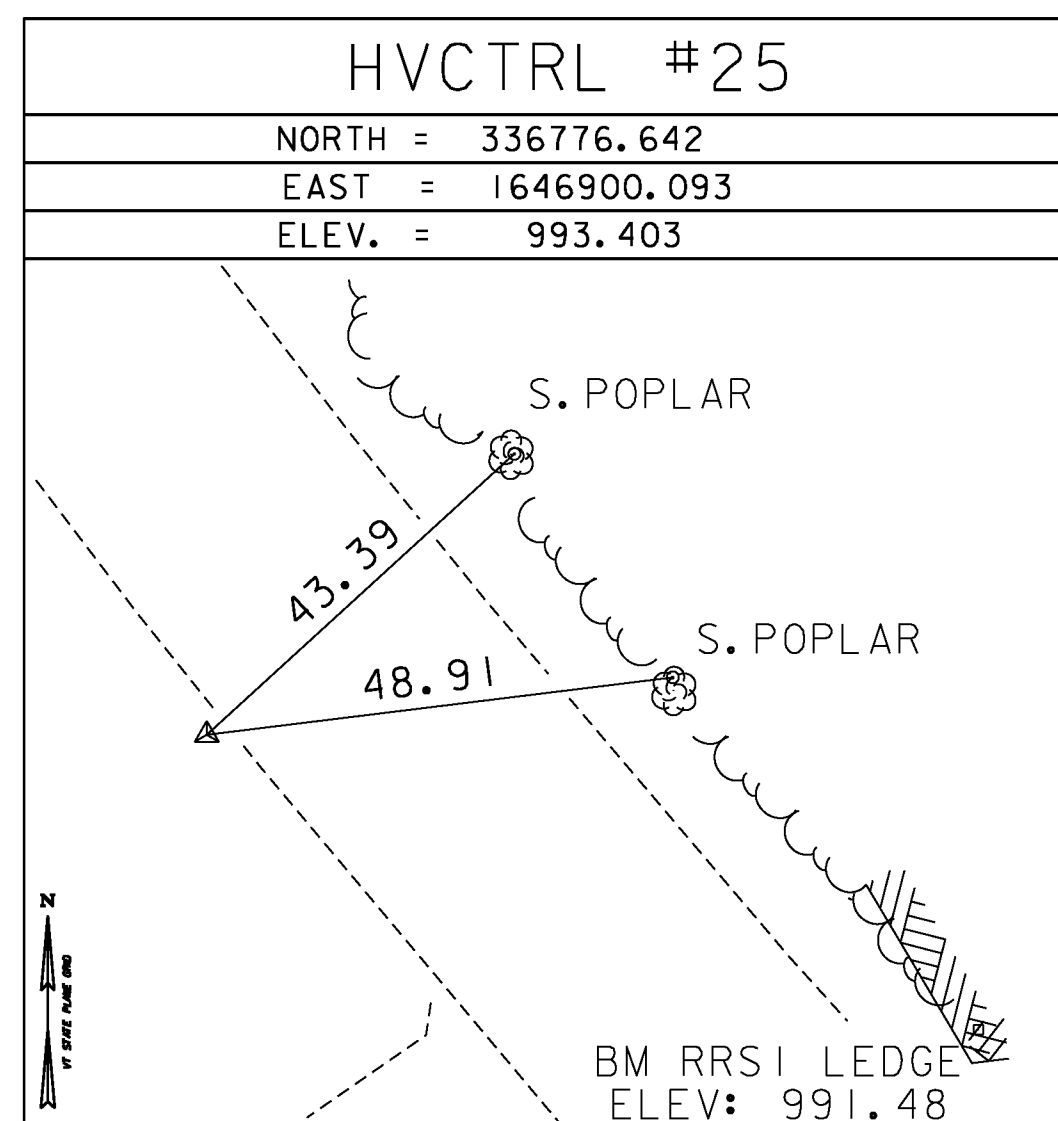
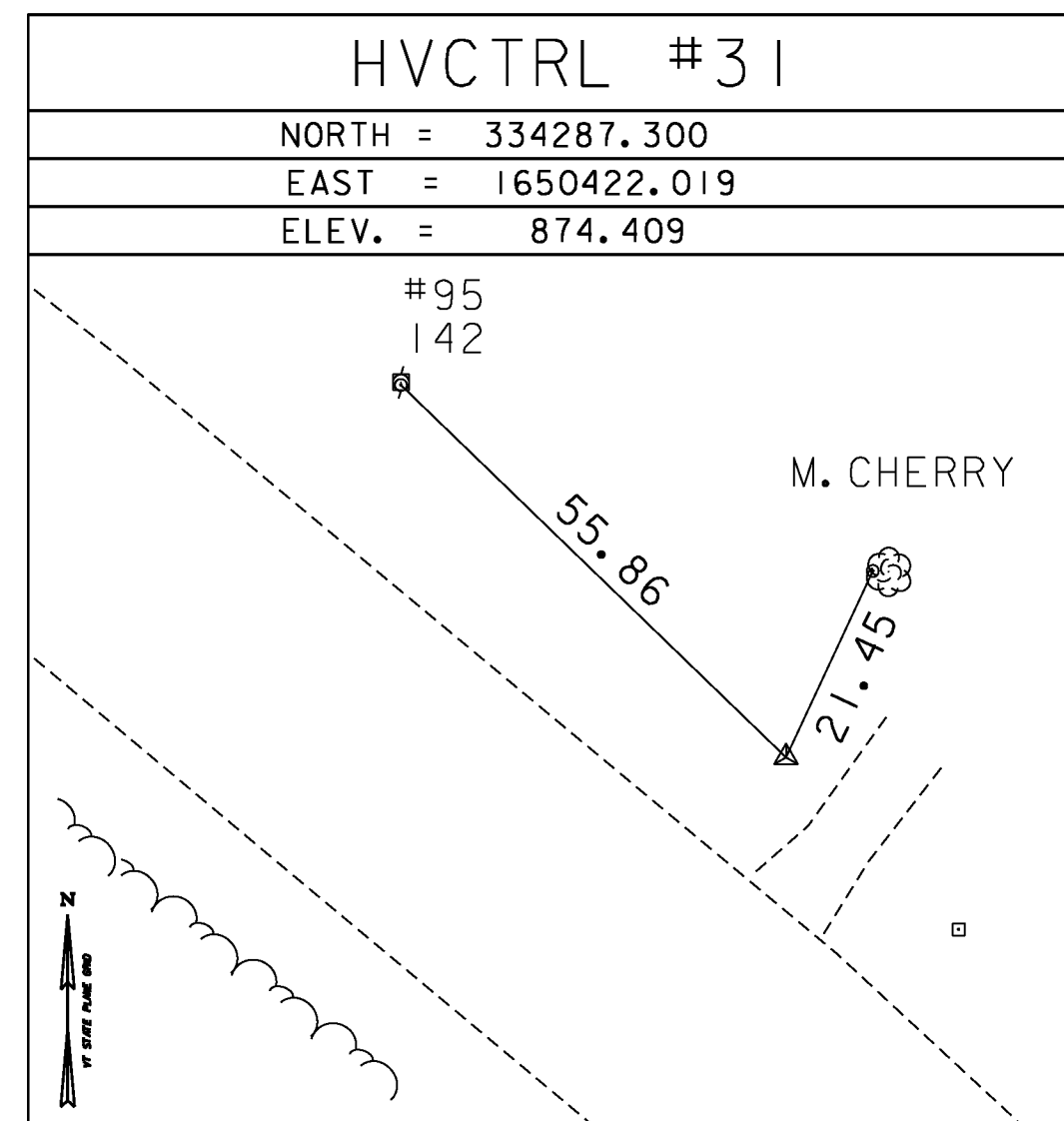
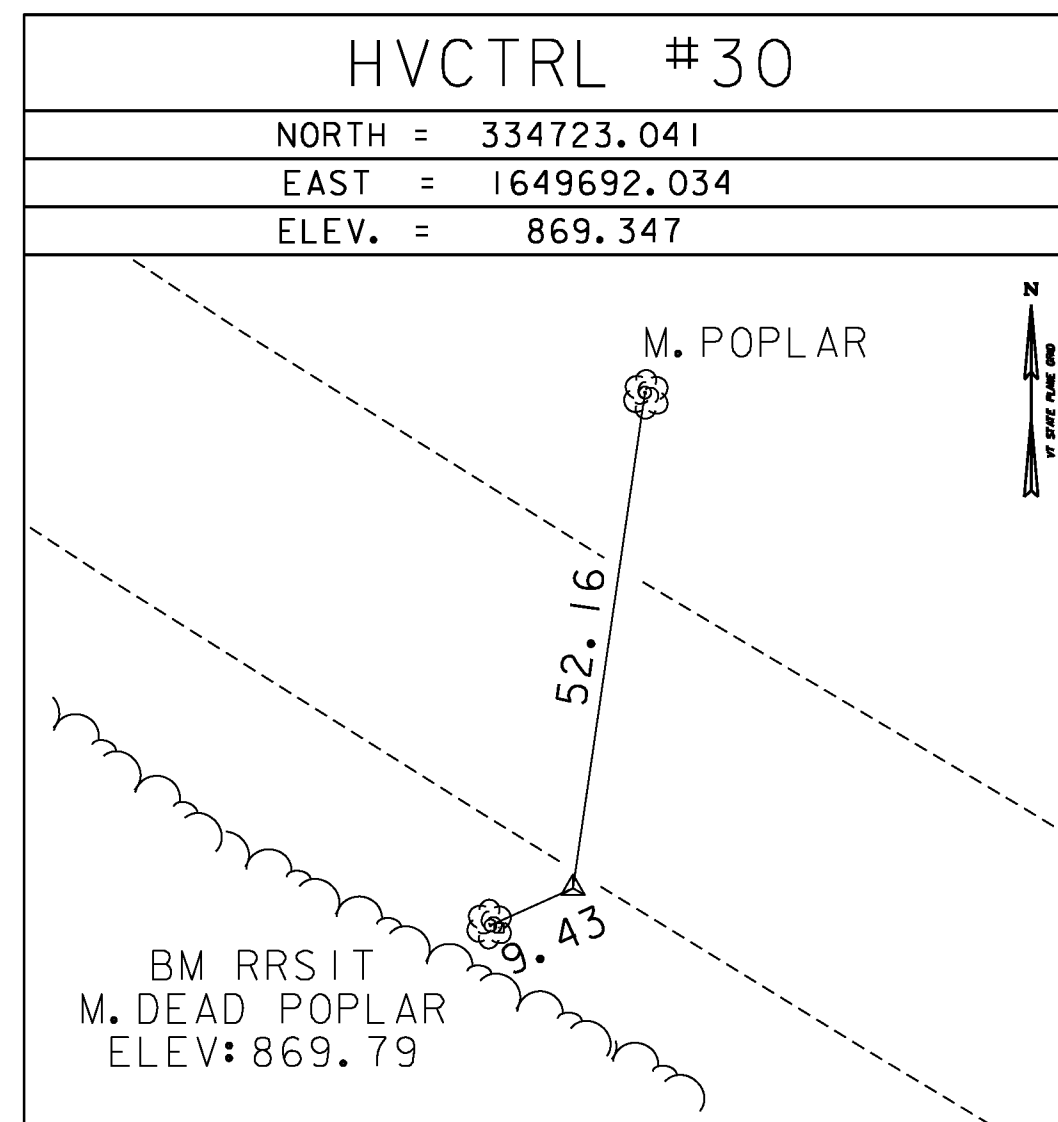


TRAVERSE TIES



TRAVERSE TIES



HVCTRL #32

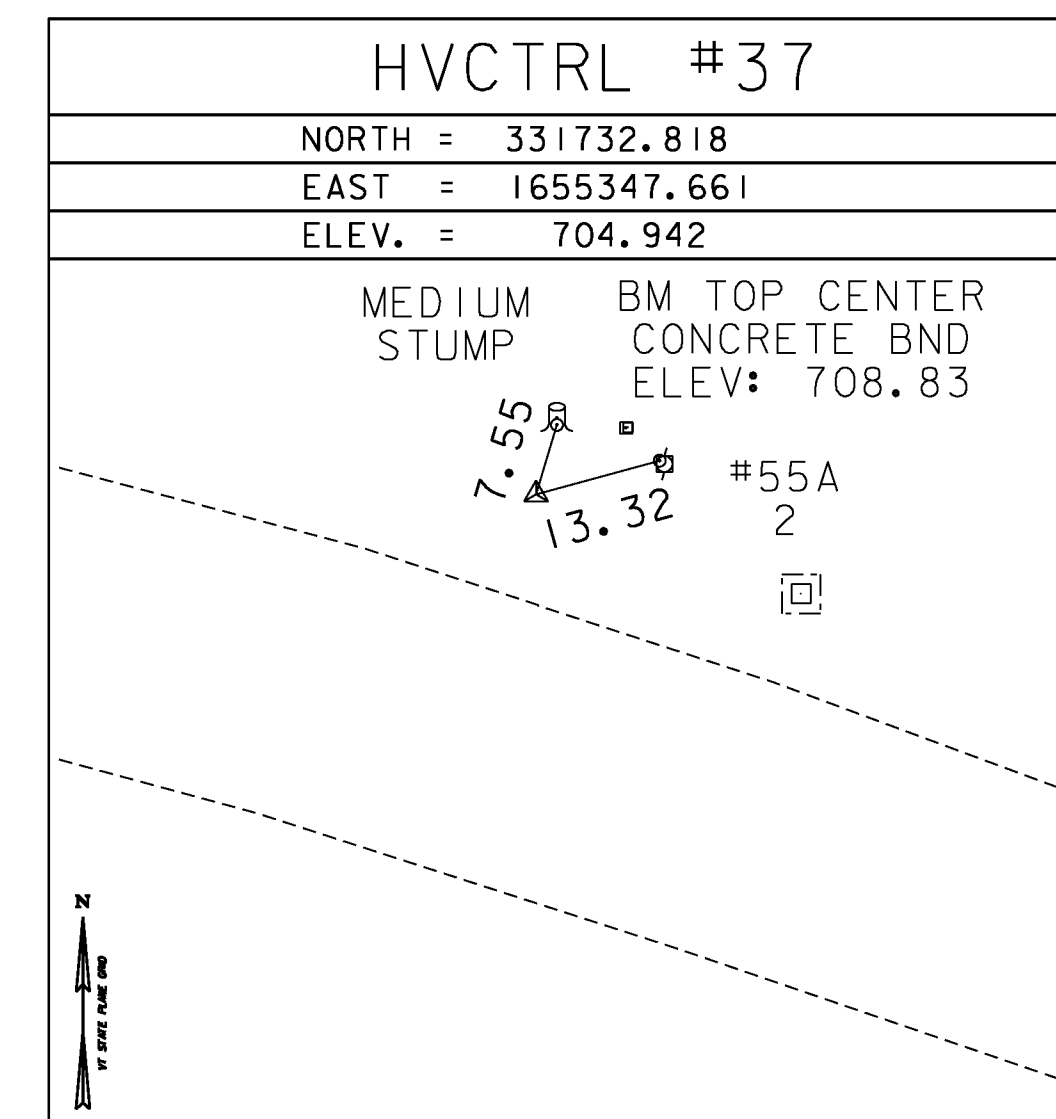
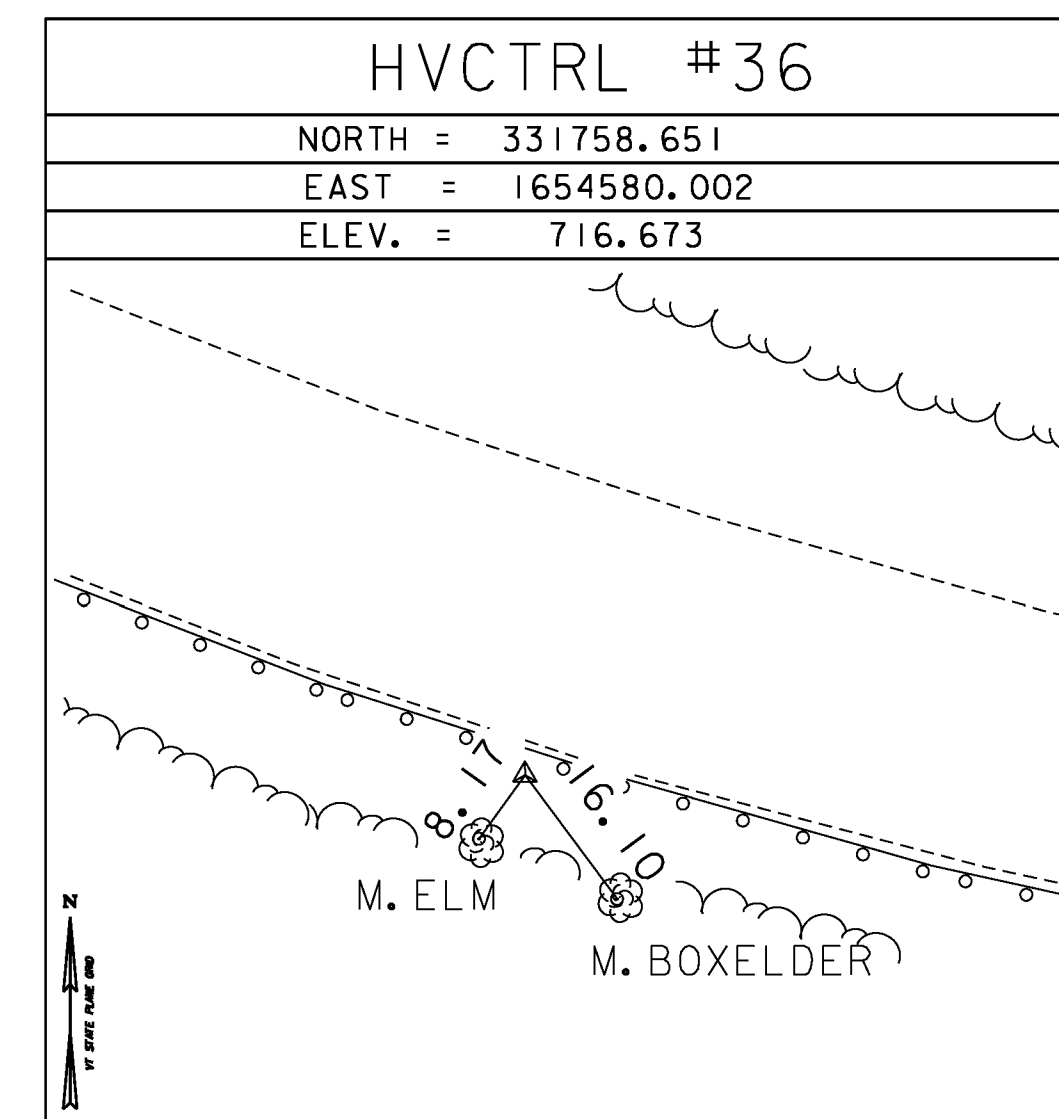
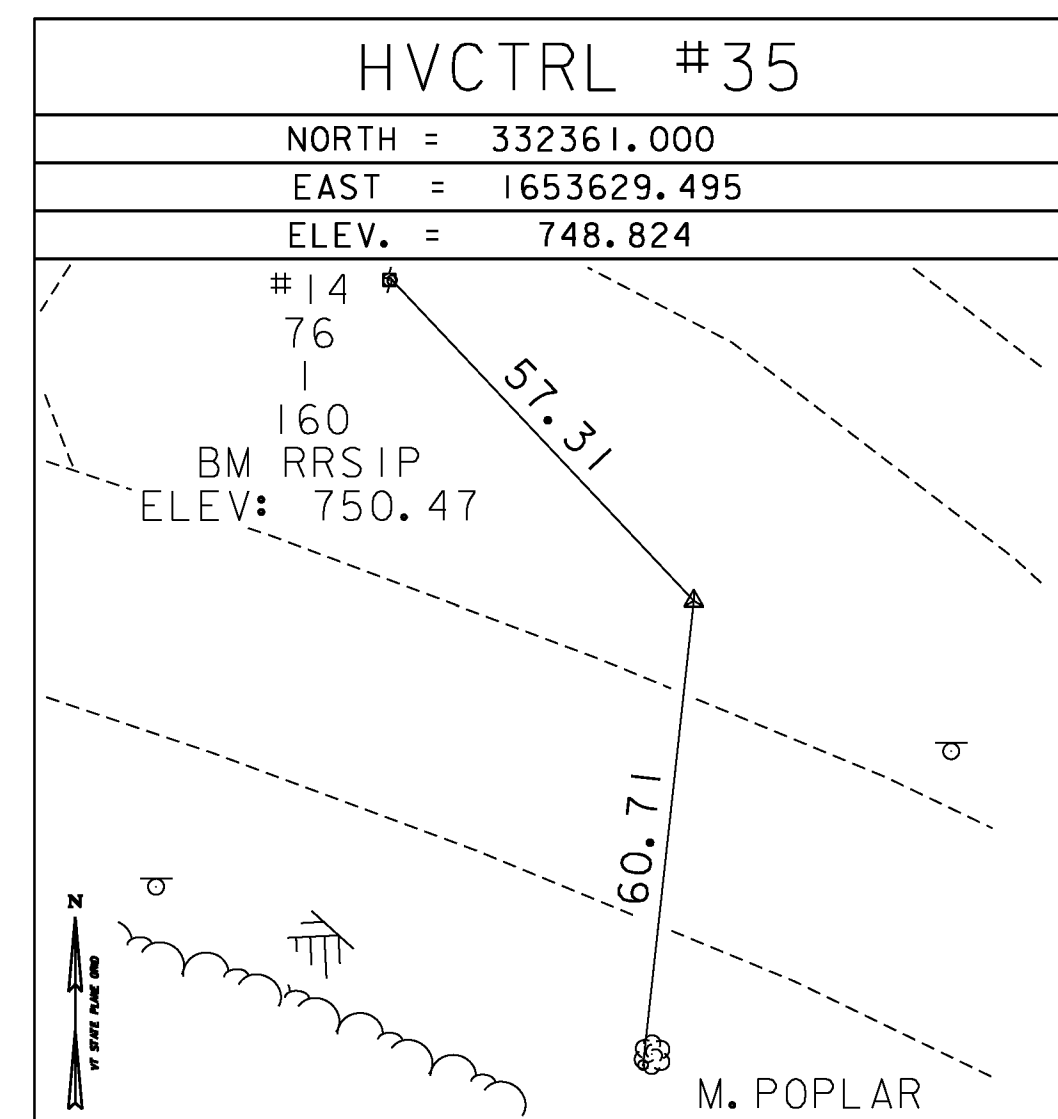
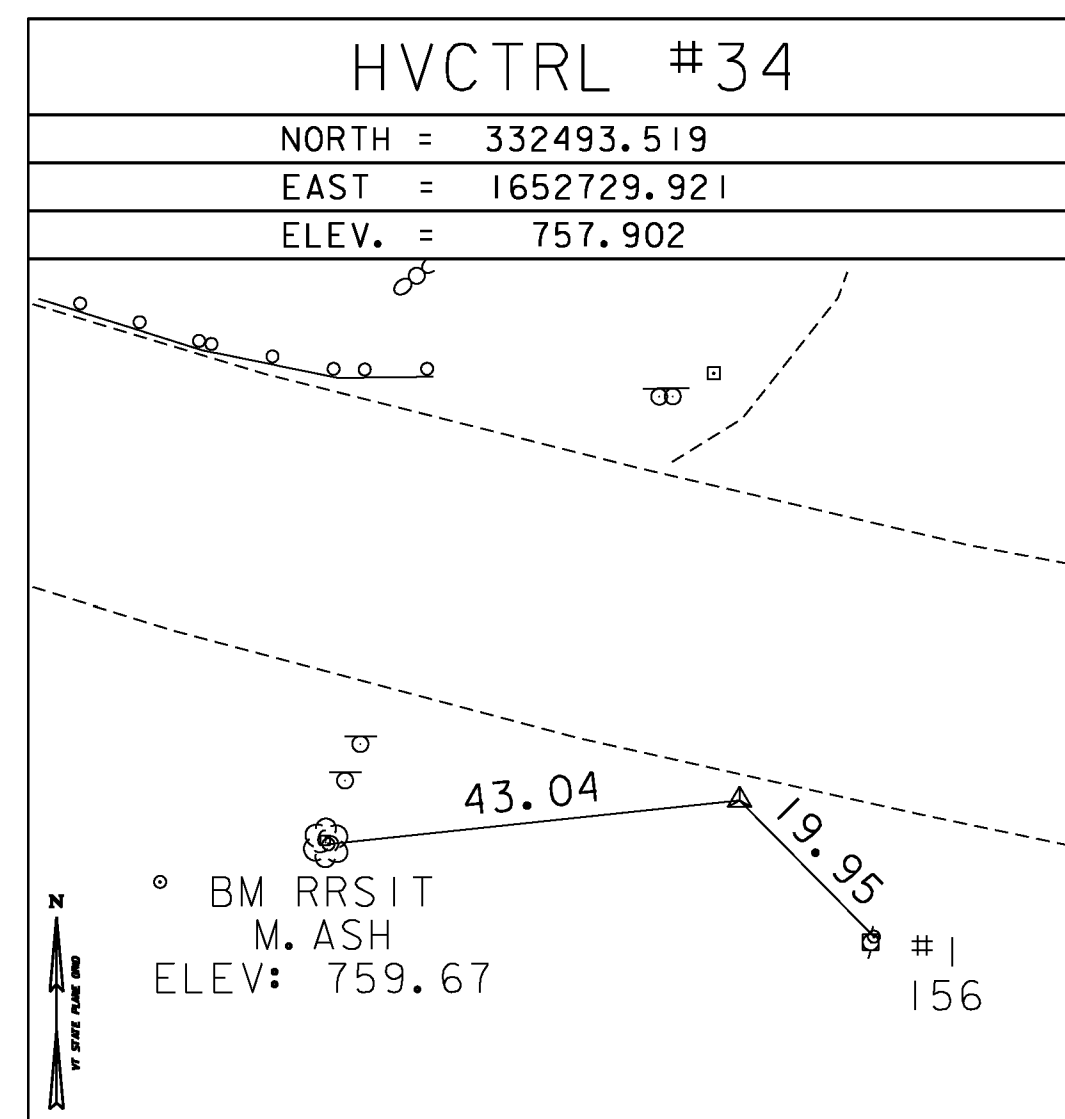
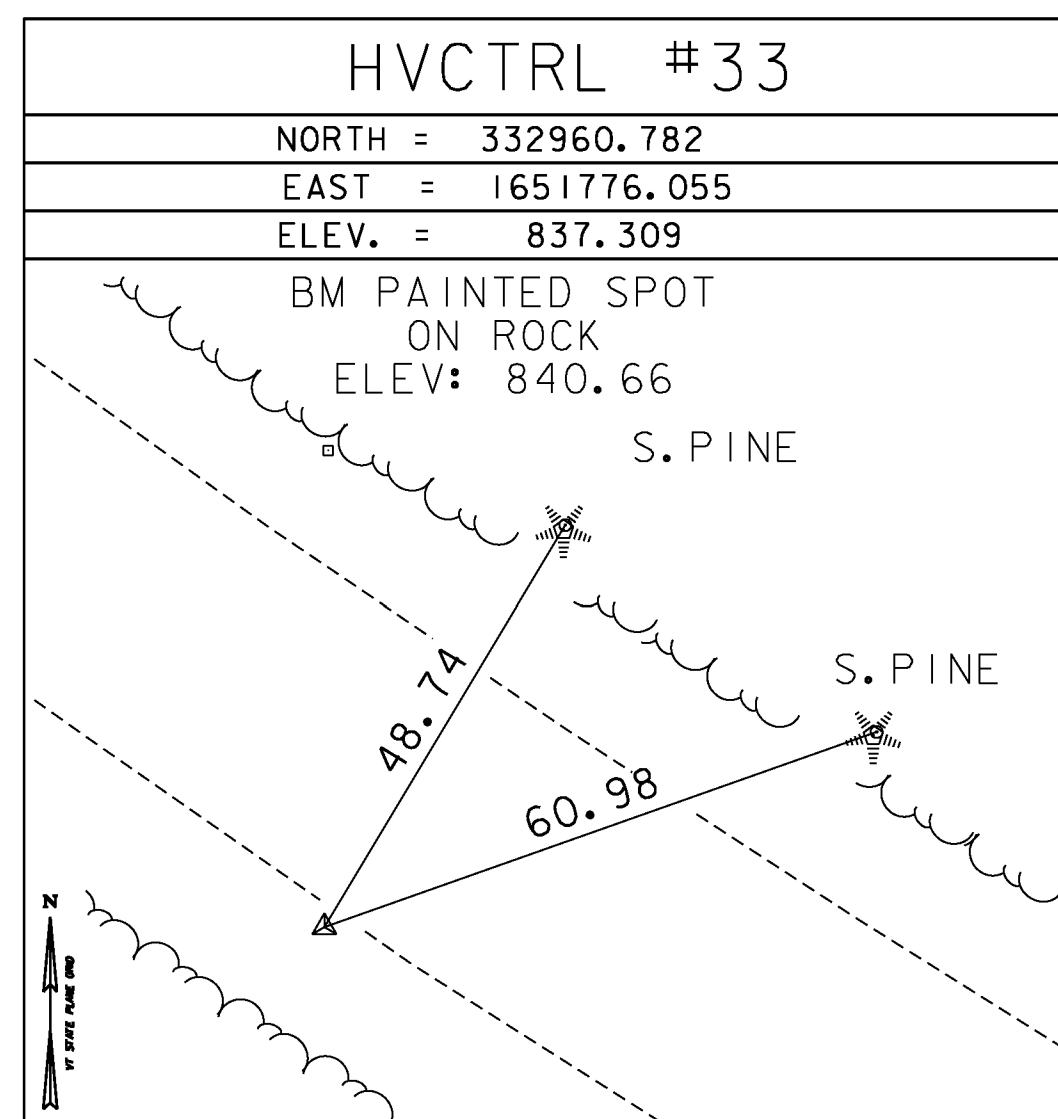
STOODLEY AZ MK

NORTH = 333903.505
EAST = 1650841.494
ELEV. = 864.807

GENERAL LOCATION, WEATHERSFIELD, VT.

TO REACH FROM THE 1-91 BRIDGES OVER VT ROUTE 131 AT EXIT 8 IN ASCUTNEY GO WEST ALONG VT ROUTE 131 FOR 2.7 MI (4.3 KM) TO THE INTERSECTION OF A GRAVEL DRIVE RIGHT, LEADING TO WRIGHTS HOUSE NO 3123 AND THE SITE OF THE MARK ON THE RIGHT IN A LAWN, JUST NORTHWEST OF THE DRIVE. THE MARK IS SET IN THE TOP OF A 0.4 M (1.3 FT) X 0.2 M (0.7 FT) ROCK OUTCROP WHICH PROJECTS ABOUT 5 CM (2 INCHES) ABOVE GROUND SURFACE. IT IS 6.7 M (22.0 FT) NORTHEAST OF AND ABOUT 0.7 M (2.3 FT) LOWER THAN THE CENTERLINE OF VT ROUTE 131, 11.8 M (38.7 FT) NORTHWEST OF THE CENTERLINE OF THE GRAVEL DRIVE, 51.8 M (169.9 FT) SOUTH-SOUTHEAST OF POLE NO 14/93/144 AND 19.4 M (63.6 FT) SOUTH OF A CONCRETE RIGHT OF WAY BOUND.

TRAVERSE TIES



DATUM	
VERTICAL	NAVD 88
HORIZONTAL	NAD 83 (96)
ADJUSTMENT	COMPASS

PROJECT NAME:	WEATHERSFIELD
PROJECT NUMBER:	STP 2913(I) / NH 2948(I)
FILE NAME:	survey\10c228t1.dgn
PROJECT LEADER:	M. Fowler
DESIGNED BY:	VTrans
TIE SHEET 3	
PLOT DATE:	2/7/2013
DRAWN BY:	R. Bullock
CHECKED BY:	VTrans
SHEET 5	OF 234