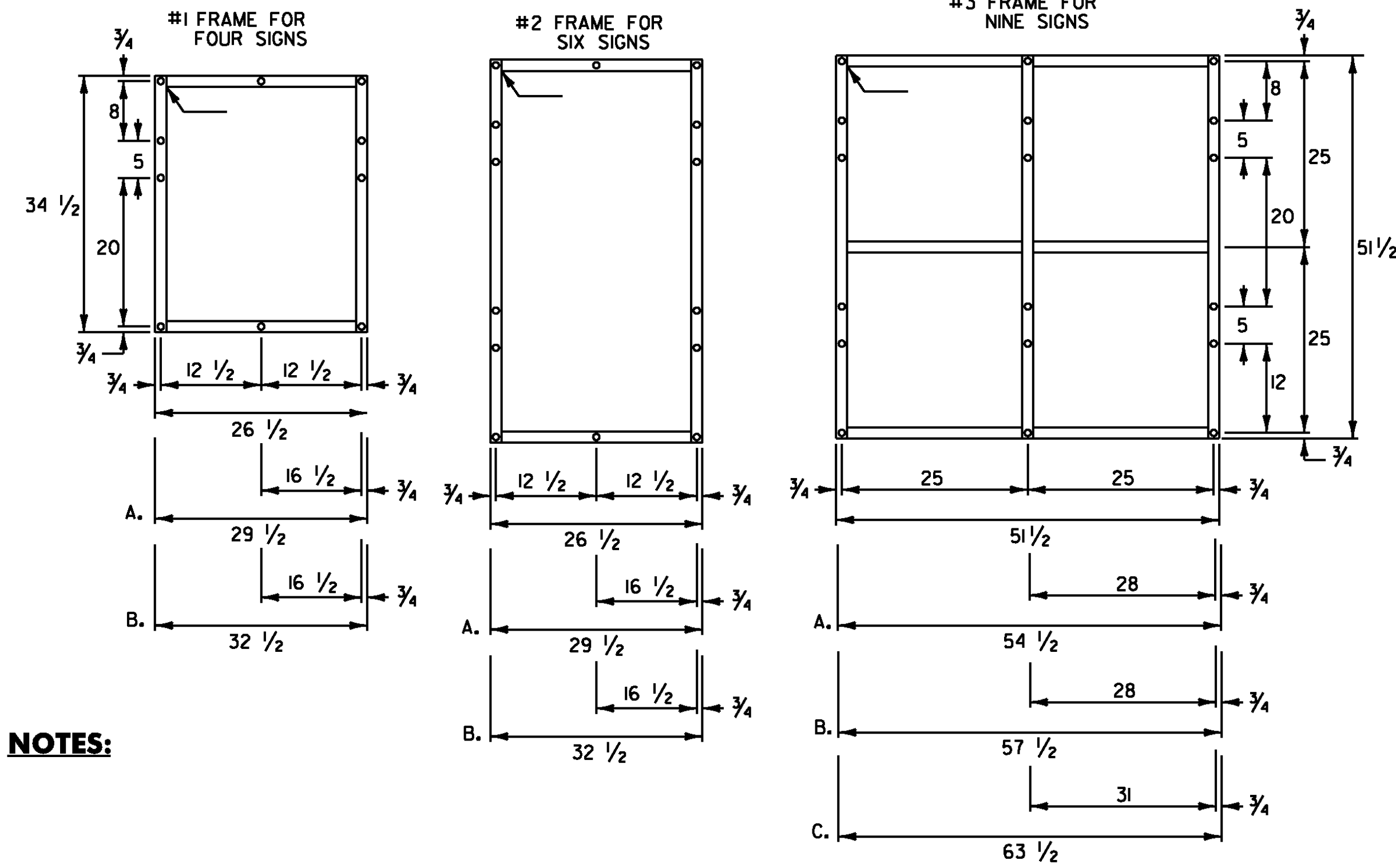
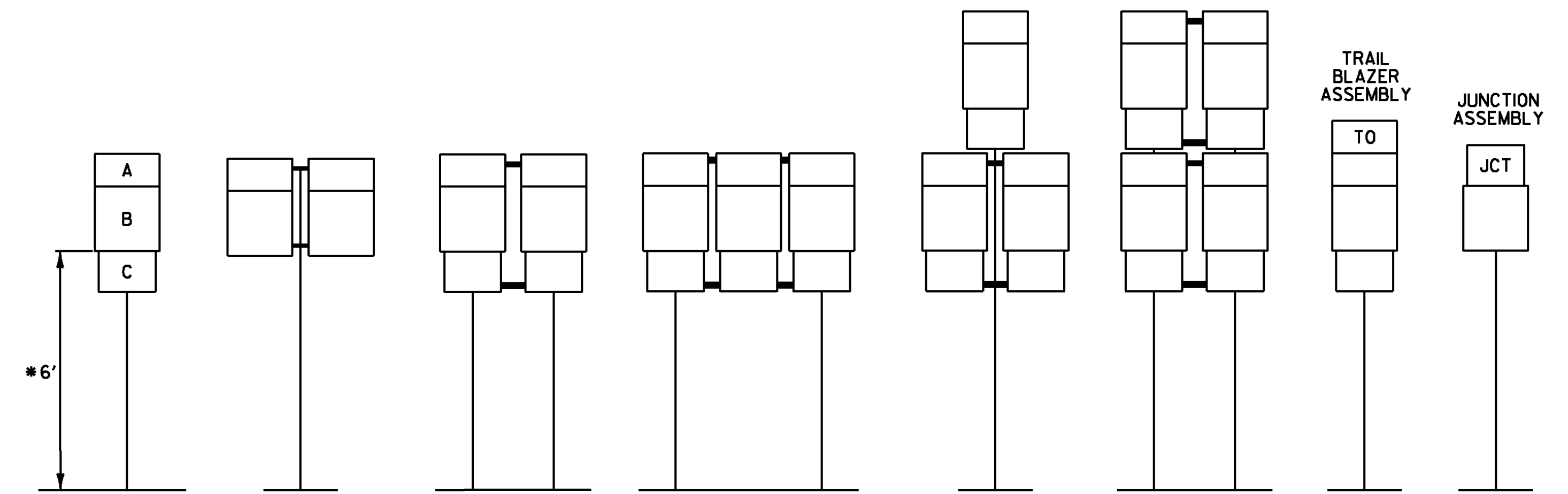


ROUTE MARKER ASSEMBLY FRAMES



NOTES:

STANDARD MOUNTING OF ROUTE MARKER ASSEMBLIES



- A - CARDINAL DIRECTION MARKER
- B - ROUTE NUMBER
- C - ADVANCE TURN ARROW OR DIRECTIONAL ARROW

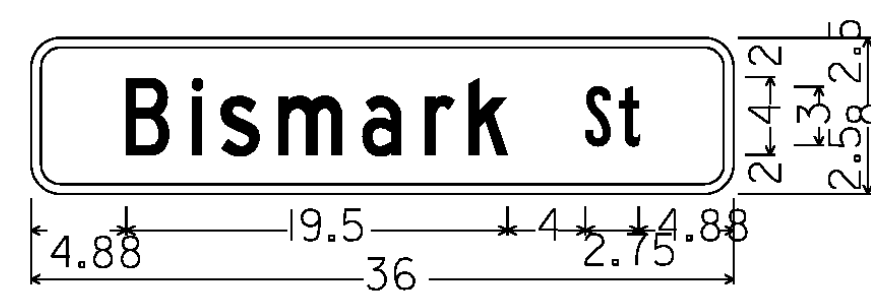
INSTALLATION SEQUENCE:

IN MULTIPLE HORIZONTAL MOUNTINGS PLACE A ROUTE MARKER ASSEMBLY INDICATING A LEFT TURN ON THE LEFT SIDE OF THE ASSEMBLY; RIGHT TURN ON THE RIGHT SIDE. FOR VERTICALLY STACKED MOUNTINGS PLACE THE STRAIGHT THROUGH MOVE INDICATION ON TOP, THE LEFT OR RIGHT TURNS AS APPROPRIATE BENEATH.

* WHERE PARKING OR PEDESTRIAN TRAFFIC WILL OCCUR IN THE IMMEDIATE VICINITY OF THESE SIGNS MINIMUM VERTICAL CLEARANCE SHALL BE INCREASED TO SEVEN FEET

NOTE:

VERTICAL FRAME MEMBERS SHALL LINE UP WITH SIGN POST ON WHICH THEY ARE MOUNTED.



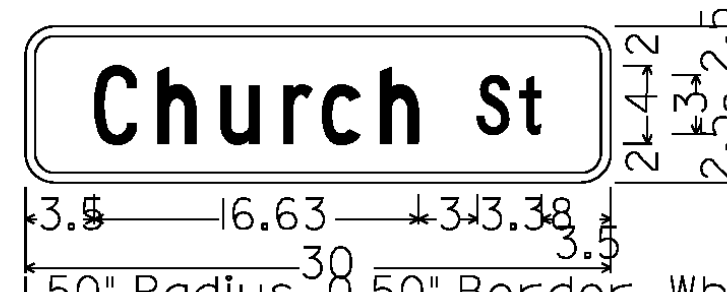
[Bismark] C; [S+] B;

D3-1



1.50" Radius, 0.50" Border, White on Green; [W Berkshire] C; [RD] B;

D3-1



1.50" Radius, 0.50" Border, White on Green; [Church] C; [S+] C;

D3-1



1.50" Radius, 0.50" Border, White on Green; [Orchard] C; [S+] B;



1.50" Radius, 0.50" Border, White on Green; [Pearl] C; [S+] C;

D3-1



1.50" Radius, 0.50" Border, White on Green; [Main] C; [S+] C;

D3-1



1.50" Radius, 0.50" Border, White on Green; [School] C; [S+] C;

D3-1



1.50" Radius, 0.50" Border, White on Green; [Elm] C; [S+] C;

D3-1



1.50" Radius, 0.50" Border, White on Green; [Depot] C; [S+] C;

D3-1

ALL DIMENSIONS SHOWN IN INCHES, UNLESS OTHERWISE NOTED.