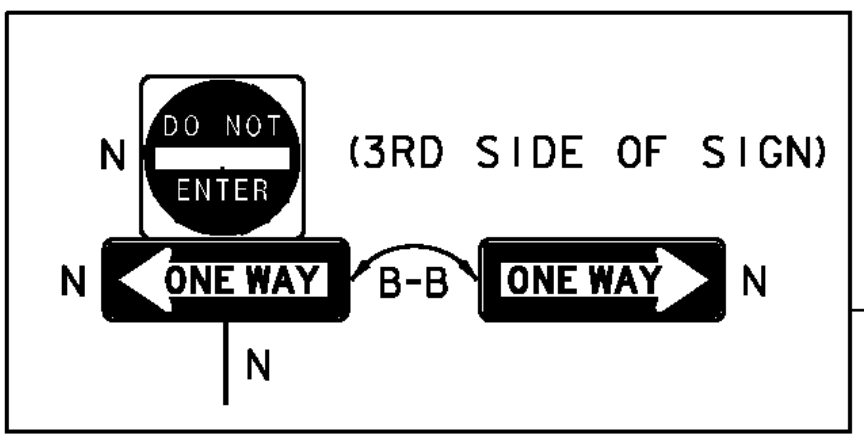
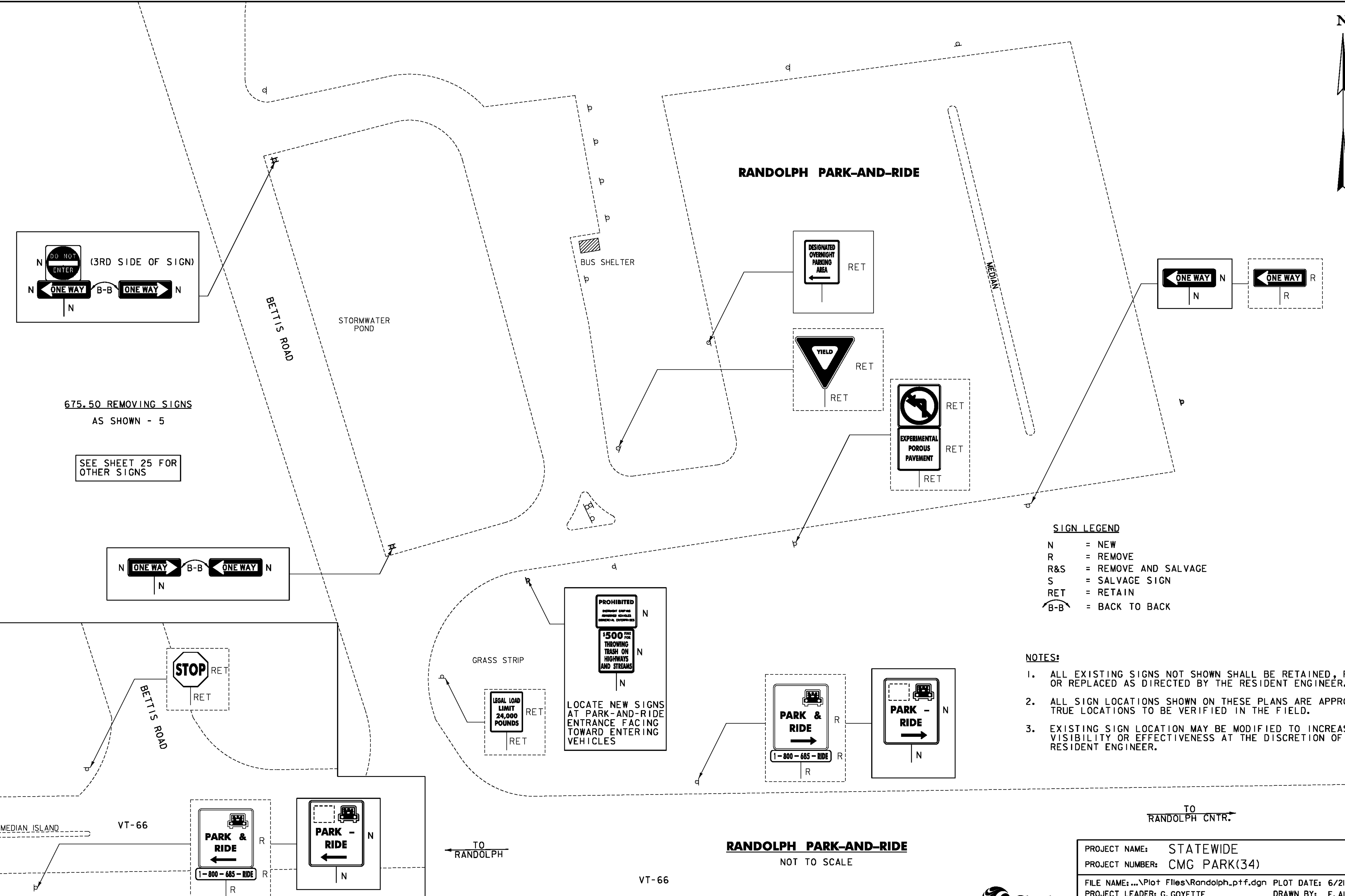
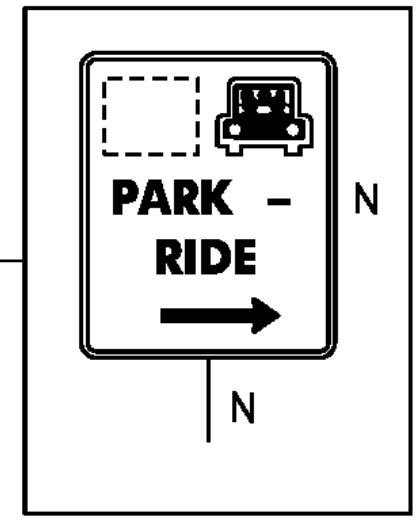
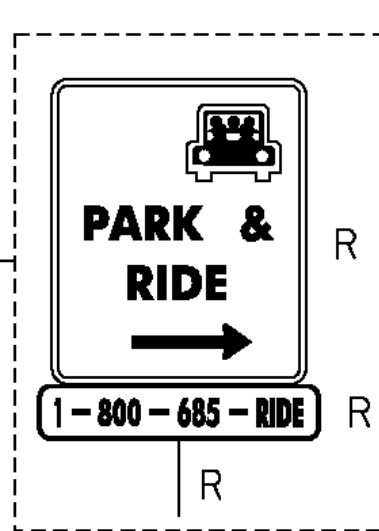
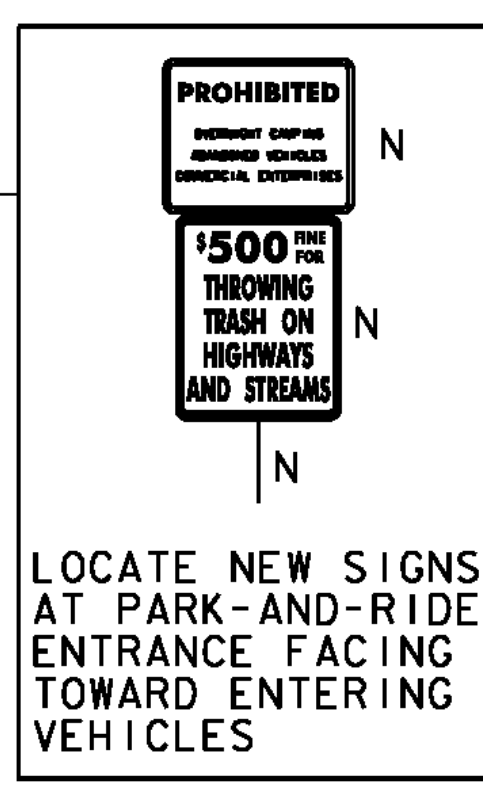
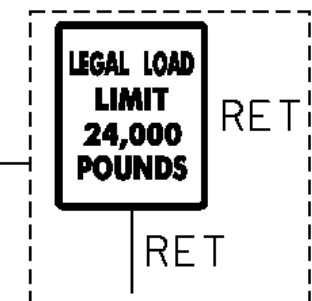
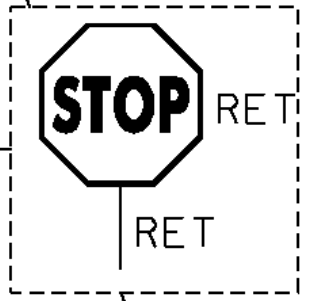
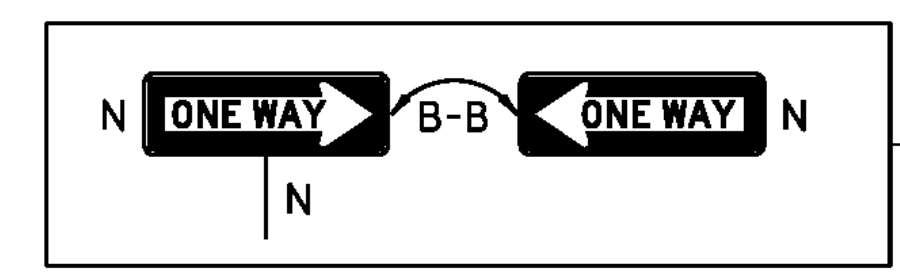


RANDOLPH PARK-AND-RIDE



675.50 REMOVING SIGNS
AS SHOWN - 5

SEE SHEET 25 FOR
OTHER SIGNS



SIGN LEGEND

- N = NEW
- R = REMOVE
- R&S = REMOVE AND SALVAGE
- S = SALVAGE SIGN
- RET = RETAIN
- B-B = BACK TO BACK

NOTES:

1. ALL EXISTING SIGNS NOT SHOWN SHALL BE RETAINED, REMOVED OR REPLACED AS DIRECTED BY THE RESIDENT ENGINEER.
2. ALL SIGN LOCATIONS SHOWN ON THESE PLANS ARE APPROXIMATE, TRUE LOCATIONS TO BE VERIFIED IN THE FIELD.
3. EXISTING SIGN LOCATION MAY BE MODIFIED TO INCREASE VISIBILITY OR EFFECTIVENESS AT THE DISCRETION OF THE RESIDENT ENGINEER.

TO
RANDOLPH CNTR.

TO
RANDOLPH

RANDOLPH PARK-AND-RIDE
NOT TO SCALE

VT-66

VT-66

PROJECT NAME: STATEWIDE
PROJECT NUMBER: CMG PARK(34)

FILE NAME: ...\\Plot Files\\Randolph.prf.dgn PLOT DATE: 6/21/2012
PROJECT LEADER: G. GOYETTE DRAWN BY: E. ALLING
DESIGNED BY: E. ALLING CHECKED BY: G. GOYETTE
RANDOLPH 1 SHEET 24 OF 69

