

**SIGN LEGEND**

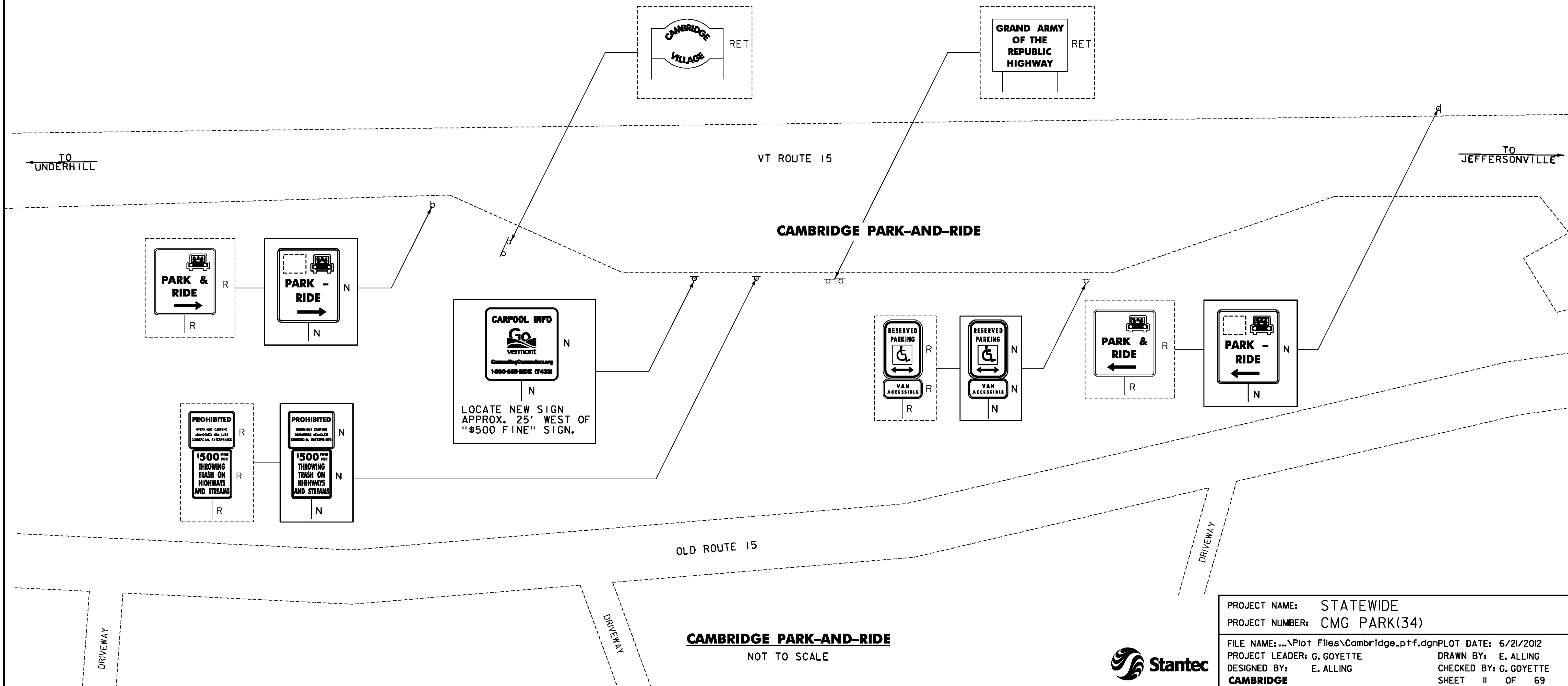
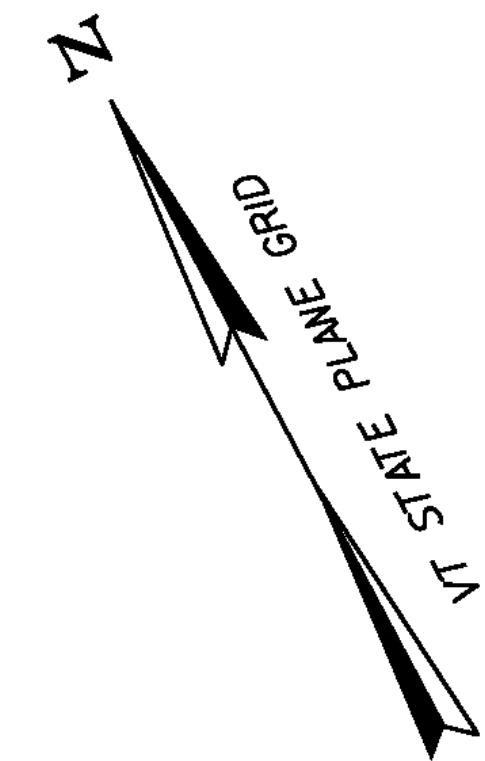
- N = NEW
- R = REMOVE
- R&S = REMOVE AND SALVAGE
- S = SALVAGE SIGN
- RET = RETAIN
- B-B = BACK TO BACK

**NOTES:**

1. ALL EXISTING SIGNS NOT SHOWN SHALL BE RETAINED, REMOVED OR REPLACED AS DIRECTED BY THE RESIDENT ENGINEER.
2. ALL SIGN LOCATIONS SHOWN ON THESE PLANS ARE APPROXIMATE, TRUE LOCATIONS TO BE VERIFIED IN THE FIELD.
3. EXISTING SIGN LOCATION MAY BE MODIFIED TO INCREASE VISIBILITY OR EFFECTIVENESS AT THE DISCRETION OF THE RESIDENT ENGINEER.

**675.50 REMOVING SIGNS**

AS SHOWN - 6



PROJECT NAME: STATEWIDE	
PROJECT NUMBER: CMG PARK(34)	
FILE NAME: ...\\Plot Files\\Cambridge_ptf.dgn	PLOT DATE: 6/21/2012
PROJECT LEADER: G. GOYETTE	DRAWN BY: E. ALLING
DESIGNED BY: E. ALLING	CHECKED BY: G. GOYETTE
<b>CAMBRIDGE</b>	
SHEET II OF 69	

