

**GENERAL NOTES:**

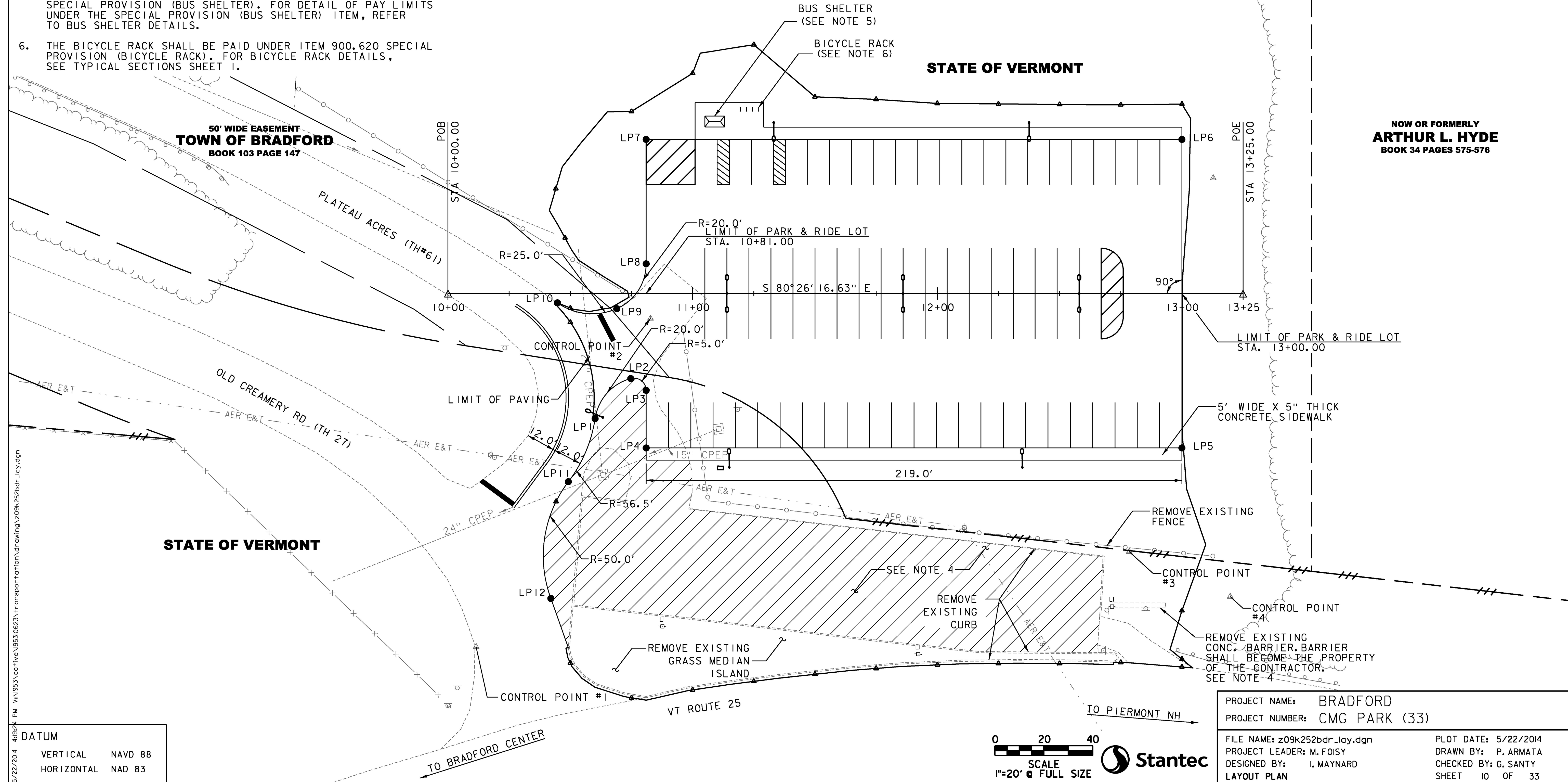
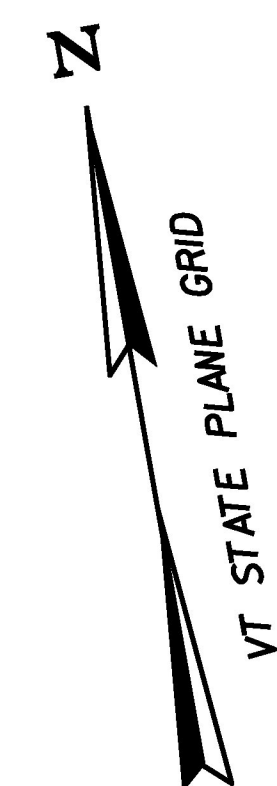
- FOR A SUMMARY OF CONTROL POINTS, TRAVERSE TIES AND ALIGNMENT LAYOUT POINTS, SEE SURVEY CONTROL AND TIES SHEET
- FOR SIGNS AND PAVEMENT MARKINGS SEE SIGNING AND PAVEMENT MARKING PLAN.
- FOR PARK-AND-RIDE LIGHTING SEE LIGHTING AND LANDSCAPE PLAN, AND LIGHTING DETAILS.
- DURING CONSTRUCTION ACCESS SHALL BE MAINTAINED TO THE EXISTING PARK-AND-RIDE WHICH WILL REMAIN OPEN. ONCE NEW PARK-AND-RIDE IS OPEN TO TRAFFIC, EXCAVATE EXISTING PAVED/GRAVEL PARK-AND-RIDE (8" +/- 1"), NARROW SUBSURFACE TO BREAK UP COMPACTED BASE. PAID AS ITEM 203.28 EXCAVATION OF SURFACES AND PAVEMENTS. PLACE 4" OF TOPSOIL, SEED, FERTILIZER, LIMESTONE AND MULCH PER SEEDING FORMULA ON TYPICAL SECTIONS SHEET 2. REMOVAL OF THE EXISTING CONCRETE BARRIER SHALL BE INCIDENTAL TO THIS WORK.
- THE BUS SHELTER SHALL BE PAID UNDER ITEM 900.645, SPECIAL PROVISION (BUS SHELTER). FOR DETAIL OF PAY LIMITS UNDER THE SPECIAL PROVISION (BUS SHELTER) ITEM, REFER TO BUS SHELTER DETAILS.
- THE BICYCLE RACK SHALL BE PAID UNDER ITEM 900.620 SPECIAL PROVISION (BICYCLE RACK). FOR BICYCLE RACK DETAILS, SEE TYPICAL SECTIONS SHEET 1.

**LAYOUT POINT SUMMARY**

LEGEND: LP#X = LAYOUT POINT #X

LAYOUT POINT	DESCRIPTION	COORDINATES	STATION
1	PC OF 20' RADIUS	N: 541301.38 E: 1738320.46	STA. 10+60.13, 51.03' RT.
2	PCC OF 20' & 5' RADIUS	N: 541315.04 E: 1738337.53	STA. 10+74.70, 34.71' RT.
3	PT OF 5' RADIUS	N: 541309.23 E: 1738342.94	STA. 10+81.00, 39.54' RT.
4	CORNER OF SIDEWALK	N: 541286.10 E: 1738339.04	STA. 10+81.00, 63.00' RT.
5	CORNER OF SIDEWALK	N: 541249.72 E: 1738555.00	STA. 13+00.00, 63.00' RT.
6	CORNER OF LOT	N: 541373.97 E: 1738575.93	STA. 13+00.00, 63.00' LT.
7	CORNER OF LOT	N: 541410.35 E: 1738359.98	STA. 10+81.00, 63.00' LT.
8	PC OF 20' RADIUS	N: 541360.22 E: 1738351.53	STA. 10+81.00, 12.16' LT.
9	PCC OF 25' & 20' RADIUS	N: 541344.14 E: 1738336.65	STA. 10+69.00, 6.17' RT.
10	PT OF 25' RADIUS	N: 541350.53 E: 1738313.10	STA. 10+44.71, 3.77' RT.
11	PCC OF 56.5' & 50' RADIUS	N: 541277.77 E: 1738305.39	STA. 10+49.19, 76.81' RT.
12	PT OF 50' RADIUS	N: 541231.94 E: 1738290.43	STA. 10+42.05, 124.49' RT.

- REMOVAL OF EXISTING CURB  
STA. 10+49.2, 144.6' RT - 12+74.0, 148.6' RT
- PORTLAND CEMENT CONCRETE SIDEWALK, 5 INCH  
STA. 10+81.0, 63.0' RT - 13+00.0, 63.0' RT
- REMOVAL OF EXISTING FENCE  
STA. 10+96.0, 14.3' RT - 13+14.1, 107.3' RT
- SPECIAL PROVISION (BICYCLE RACK)  
STA. 10+99.5, 74.4' RT - 11+07.0, 74.4' RT
- SPECIAL PROVISION (BUS SHELTER)  
STA. 10+85.0, 68.1' RT - 10+93.0, 68.1' RT



NOW OR FORMERLY  
**ARTHUR L. HYDE**  
BOOK 34 PAGES 575-576

PROJECT NAME:	BRADFORD	PLOT DATE:	5/22/2014
PROJECT NUMBER:	CMG PARK (33)	DRAWN BY:	P. ARMATA
FILE NAME:	z09k252bdr_lay.dgn	DESIGNED BY:	I. MAYNARD
PROJECT LEADER:	M. FOISY	CHECKED BY:	G. SANTY
LAYOUT PLAN		SHEET	10 OF 33

5/22/2014 4:48:24 PM W:\953\active\19530623\transport\tdm\drawing\z09k252bdr\_lay.dgn

DATUM

VERTICAL	NAVD 88
HORIZONTAL	NAD 83