

WIRED CONDUIT (3") (PVC) (SCH 80)
 STA. 101+46.0, RT. - 101+85.7, RT. (SOURCE TO METER)

WIRED CONDUIT (2") (PVC) (SCH 80)
 STA. 101+46.0, RT. - 101+46.0, RT. (2) (METER TO HH-1)
 STA. 101+46.0, RT. - 101+83.0, RT. (HH-1 TO SL-1)
 STA. 101+83.0, RT. - 102+64.0, RT. (SL-1 TO SL-2)
 STA. 102+64.0, RT. - 103+36.0, RT. (SL-2 TO SL-3)
 STA. 101+46.0, RT. - 101+46.0, LT. (HH-1 TO HH-2)
 STA. 101+46.0, LT. - 101+83.0, LT. (HH-2 TO SL-4)
 STA. 101+83.0, LT. - 102+64.0, LT. (SL-4 TO SL-5)
 STA. 102+64.0, LT. - 103+36.0, LT. (SL-5 TO SL-6)
 STA. 103+36.0, LT. - 103+78.0, LT. (SL-6 TO SL-7)
 STA. 103+78.0, LT. - 103+78.0, RT. (SL-7 TO SL-8)
 STA. 101+46.0, LT. - 101+79.0, LT. (HH-2 TO HH-3)
 STA. 101+79.0, LT. - 101+83.0, LT. (HH-3 TO SL-9)
 STA. 101+79.0, LT. - 102+64.0, LT. (HH-3 TO SL-10)
 STA. 102+64.0, LT. - 103+36.0, LT. (SL-10 TO SL-11)
 STA. 101+46.0, RT. - 101+79.0, RT. (METER TO HH-4)
 STA. 101+79.0, RT. - 101+83.0, RT. (HH-4 TO SL-12)
 STA. 101+79.0, RT. - 102+64.0, RT. (HH-4 TO SL-13)
 STA. 102+64.0, RT. - 103+36.0, RT. (SL-13 TO SL-14)
 STA. 103+36.0, RT. - 103+78.0, RT. (SL-3 TO SL-8)

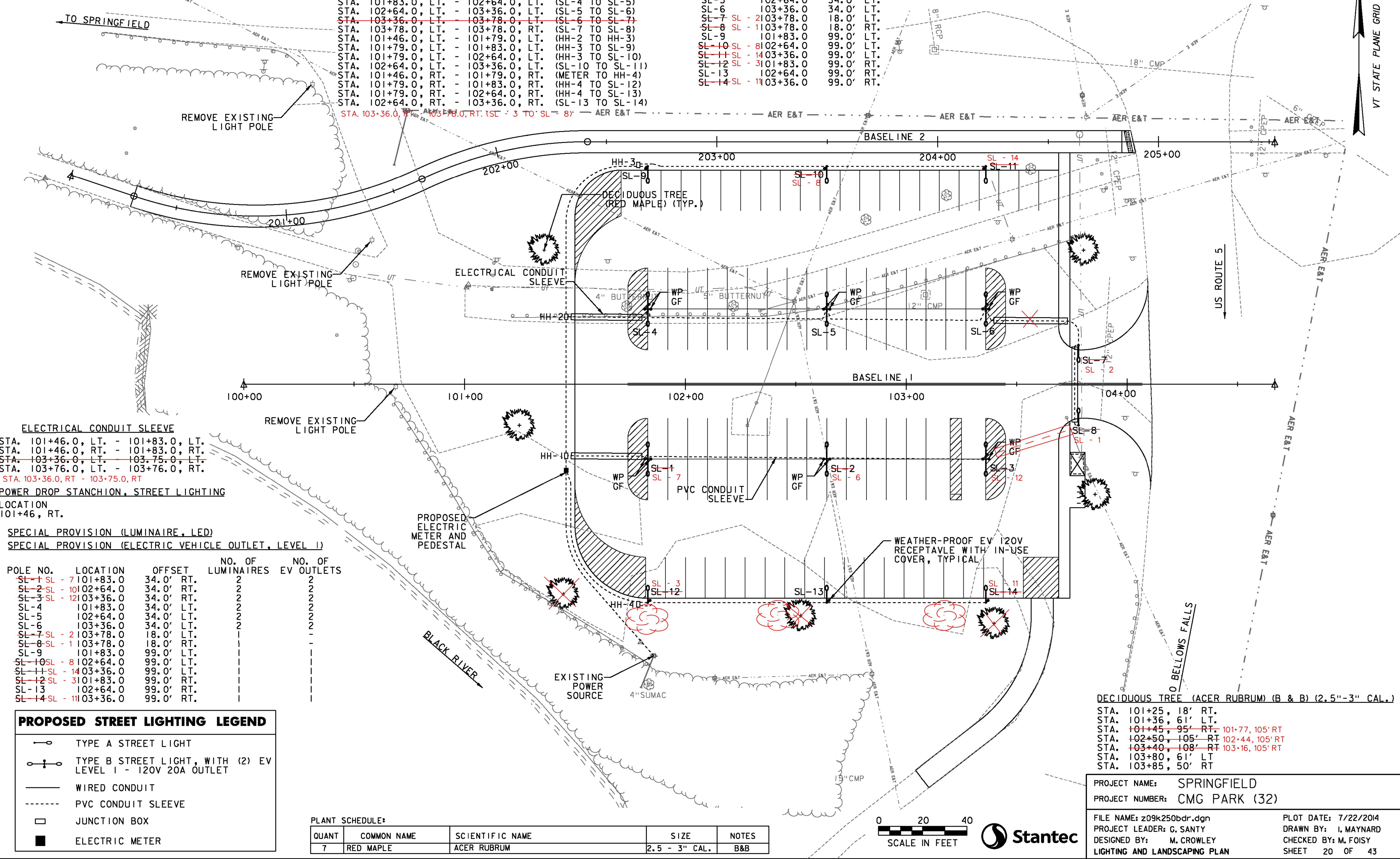
LIGHT POLE & LIGHT POLE BASE

POLE NO.	LOCATION	OFFSET	LABEL
SL-1	SL - 7 101+83.0	34.0' RT.	ELECTRHH-1
SL-2	SL - 10 102+64.0	34.0' RT.	ELECTRHH-2
SL-3	SL - 12 103+36.0	34.0' RT.	ELECTRHH-3
SL-4	101+83.0	34.0' LT.	ELECTRHH-4
SL-5	102+64.0	34.0' LT.	
SL-6	103+36.0	34.0' LT.	
SL-7	SL - 2 103+78.0	18.0' RT.	
SL-8	SL - 1 103+78.0	18.0' RT.	
SL-9	101+83.0	99.0' LT.	
SL-10	SL - 8 102+64.0	99.0' LT.	
SL-11	SL - 14 103+36.0	99.0' LT.	
SL-12	SL - 3 101+83.0	99.0' RT.	
SL-13	102+64.0	99.0' RT.	
SL-14	SL - 11 103+36.0	99.0' RT.	

JUNCTION BOX

LOCATION	OFFSET
101+46.0	32.5' RT.
101+46.0	30.5' LT.
101+79.0	99.0' LT.
101+79.0	99.0' RT.

SPECIAL PROVISION (REMOVE EXISTING LIGHT POLE)
 STA. 100+31.0, LT
 STA. 100+58.0, LT
 STA. 100+68.9, RT



ELECTRICAL CONDUIT SLEEVE
 STA. 101+46.0, LT. - 101+83.0, LT.
 STA. 101+46.0, RT. - 101+83.0, RT.
 STA. 103+36.0, LT. - 103+75.0, LT.
 STA. 103+76.0, LT. - 103+76.0, RT.
 STA. 103+36.0, RT. - 103+75.0, RT.

POWER DROP STANCHION, STREET LIGHTING
 LOCATION
 101+46, RT.

SPECIAL PROVISION (LUMINAIRE, LED)
 SPECIAL PROVISION (ELECTRIC VEHICLE OUTLET, LEVEL 1)

POLE NO.	LOCATION	OFFSET	NO. OF LUMINAIRES	NO. OF EV OUTLETS
SL-1	SL - 7 101+83.0	34.0' RT.	2	2
SL-2	SL - 10 102+64.0	34.0' RT.	2	2
SL-3	SL - 12 103+36.0	34.0' RT.	2	2
SL-4	101+83.0	34.0' LT.	2	2
SL-5	102+64.0	34.0' LT.	2	2
SL-6	103+36.0	34.0' LT.	2	2
SL-7	SL - 2 103+78.0	18.0' LT.		
SL-8	SL - 1 103+78.0	18.0' RT.		
SL-9	101+83.0	99.0' LT.		
SL-10	SL - 8 102+64.0	99.0' LT.		
SL-11	SL - 14 103+36.0	99.0' LT.		
SL-12	SL - 3 101+83.0	99.0' RT.		
SL-13	102+64.0	99.0' RT.		
SL-14	SL - 11 103+36.0	99.0' RT.		

PROPOSED STREET LIGHTING LEGEND

- TYPE A STREET LIGHT
- TYPE B STREET LIGHT, WITH (2) EV LEVEL 1 - 120V 20A OUTLET
- WIRED CONDUIT
- PVC CONDUIT SLEEVE
- JUNCTION BOX
- ELECTRIC METER

PLANT SCHEDULE:

QUANT	COMMON NAME	SCIENTIFIC NAME	SIZE	NOTES
7	RED MAPLE	ACER RUBRUM	2.5 - 3" CAL.	B&B

DECIDUOUS TREE (ACER RUBRUM) (B & B) (2.5"-3" CAL.)
 STA. 101+25, 18' RT.
 STA. 101+36, 61' LT.
 STA. 101+45, 95' RT. 101+77, 105' RT.
 STA. 102+50, 105' RT. 102+44, 105' RT.
 STA. 103+40, 108' RT. 103+16, 105' RT.
 STA. 103+80, 61' LT.
 STA. 103+85, 50' RT.

PROJECT NAME: SPRINGFIELD
 PROJECT NUMBER: CMG PARK (32)
 FILE NAME: z09k250bdr.dgn
 PROJECT LEADER: G. SANTY
 DESIGNED BY: M. CROWLEY
 LIGHTING AND LANDSCAPING PLAN
 PLOT DATE: 7/22/2014
 DRAWN BY: I. MAYNARD
 CHECKED BY: M. FOISY
 SHEET 20 OF 43

