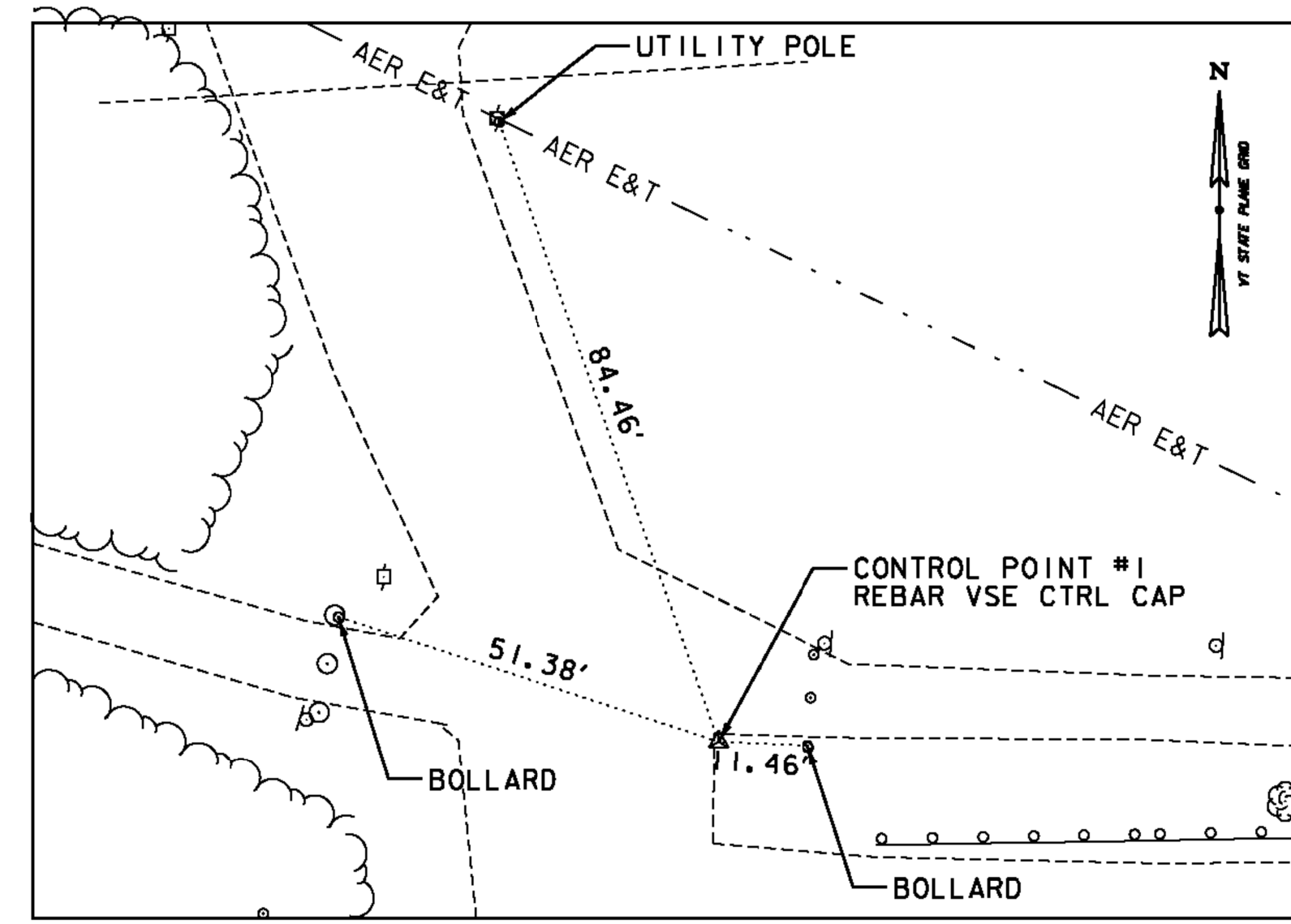


### LAYOUT POINT SUMMARY

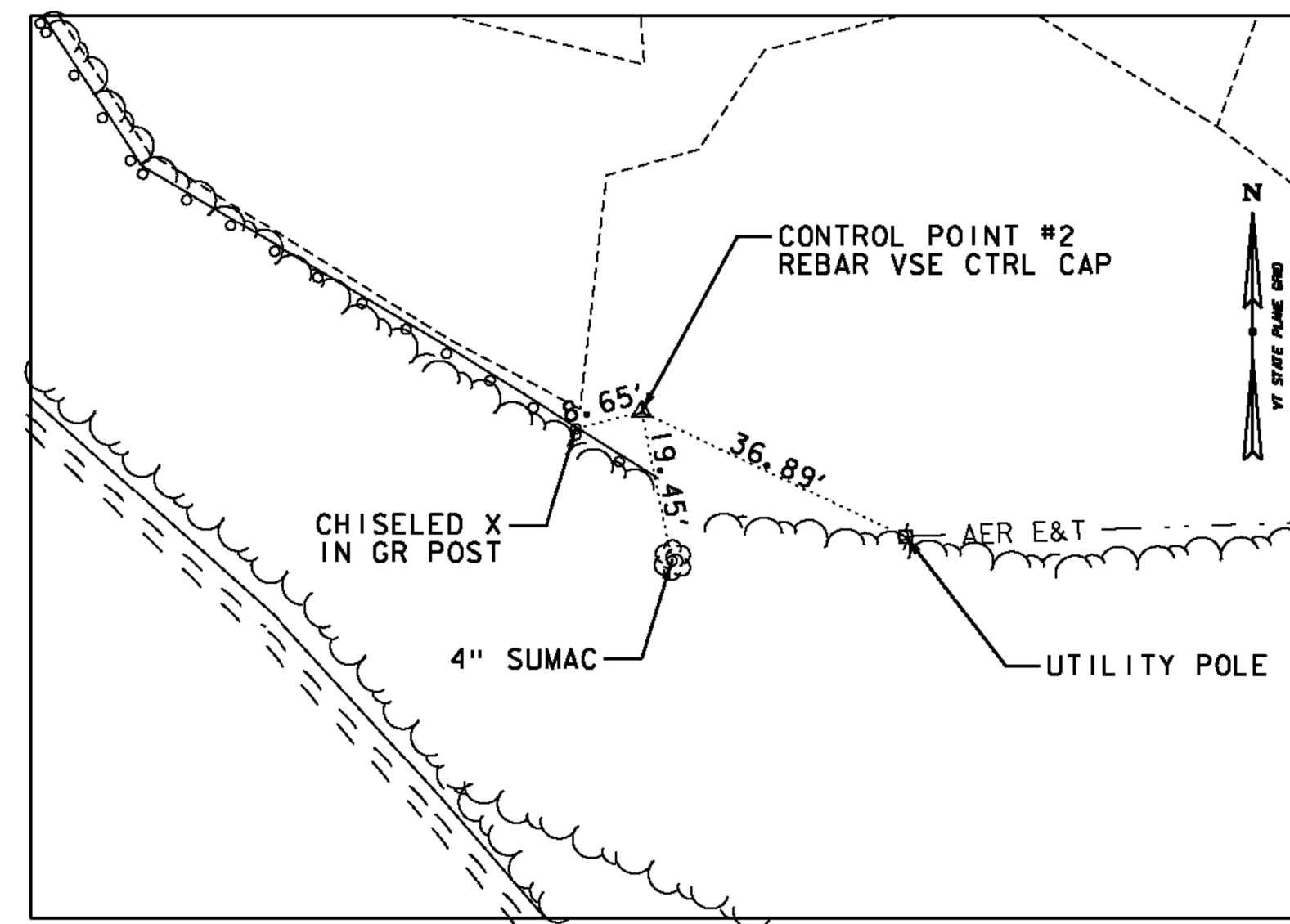
LEGEND: LP#X = LAYOUT POINT #X

| LAYOUT POINT | DESCRIPTION            | COORDINATES              | STATION                               |
|--------------|------------------------|--------------------------|---------------------------------------|
| 1            | PC OF 21' RADIUS       | N 278592.41 E 1656799.65 | BASELINE I STA. 101+50.00, 76.00' LT. |
| 2            | CENTER OF 21' RADIUS   | N 278592.59 E 1656820.65 | BASELINE I STA. 101+71.00, 76.00' LT. |
| 3            | PT OF 21' RADIUS       | N 278613.59 E 1656820.47 | BASELINE I STA. 101+71.00, 97.00' LT. |
| 4            | CORNER OF LOT          | N 278615.30 E 1657018.47 | BASELINE I STA. 103+69.00, 97.00' LT. |
| 5            | PC OF 10' RADIUS       | N 278543.80 E 1657019.08 | BASELINE I STA. 103+69.00, 25.50' LT. |
| 6            | CENTER OF 10' RADIUS   | N 278543.89 E 1657029.08 | BASELINE I STA. 103+79.00, 25.50' LT. |
| 7            | PCC OF 10' & 30' RADII | N 278533.89 E 1657028.94 | BASELINE I STA. 103+78.78, 15.50' LT. |
| 8            | CENTER OF 30' RADIUS   | N 278563.89 E 1657029.36 | BASELINE I STA. 103+79.45, 45.50' LT. |
| 9            | PT OF 30' RADIUS       | N 278564.30 E 1657059.36 | BASELINE I STA. 104+09.45, 45.65' LT. |
| 10           | PC OF 30' RADIUS       | N 278470.64 E 1657061.28 | BASELINE I STA. 104+10.57, 48.00' RT. |
| 11           | CENTER OF 30' RADIUS   | N 278472.90 E 1657031.37 | BASELINE I STA. 103+80.67, 45.50' RT. |
| 12           | PCC OF 30' & 10' RADII | N 278502.77 E 1657028.60 | BASELINE I STA. 103+78.16, 15.61' RT. |
| 13           | CENTER OF 10' RADIUS   | N 278492.82 E 1657029.52 | BASELINE I STA. 103+79.00, 25.57' RT. |
| 14           | PT OF 10' RADIUS       | N 278492.73 E 1657019.52 | BASELINE I STA. 103+69.00, 25.57' RT. |
| 15           | CORNER OF LOT          | N 278421.30 E 1657020.13 | BASELINE I STA. 103+69.00, 97.00' RT. |
| 16           | PC OF 33' RADIUS       | N 278419.70 E 1656834.14 | BASELINE I STA. 101+83.00, 97.00' RT. |
| 17           | CENTER OF 33' RADIUS   | N 278452.70 E 1656833.86 | BASELINE I STA. 101+83.00, 64.00' RT. |
| 18           | PT OF 33' RADIUS       | N 278452.42 E 1656800.86 | BASELINE I STA. 101+50.00, 64.00' RT. |

### TRAVERSE TIES



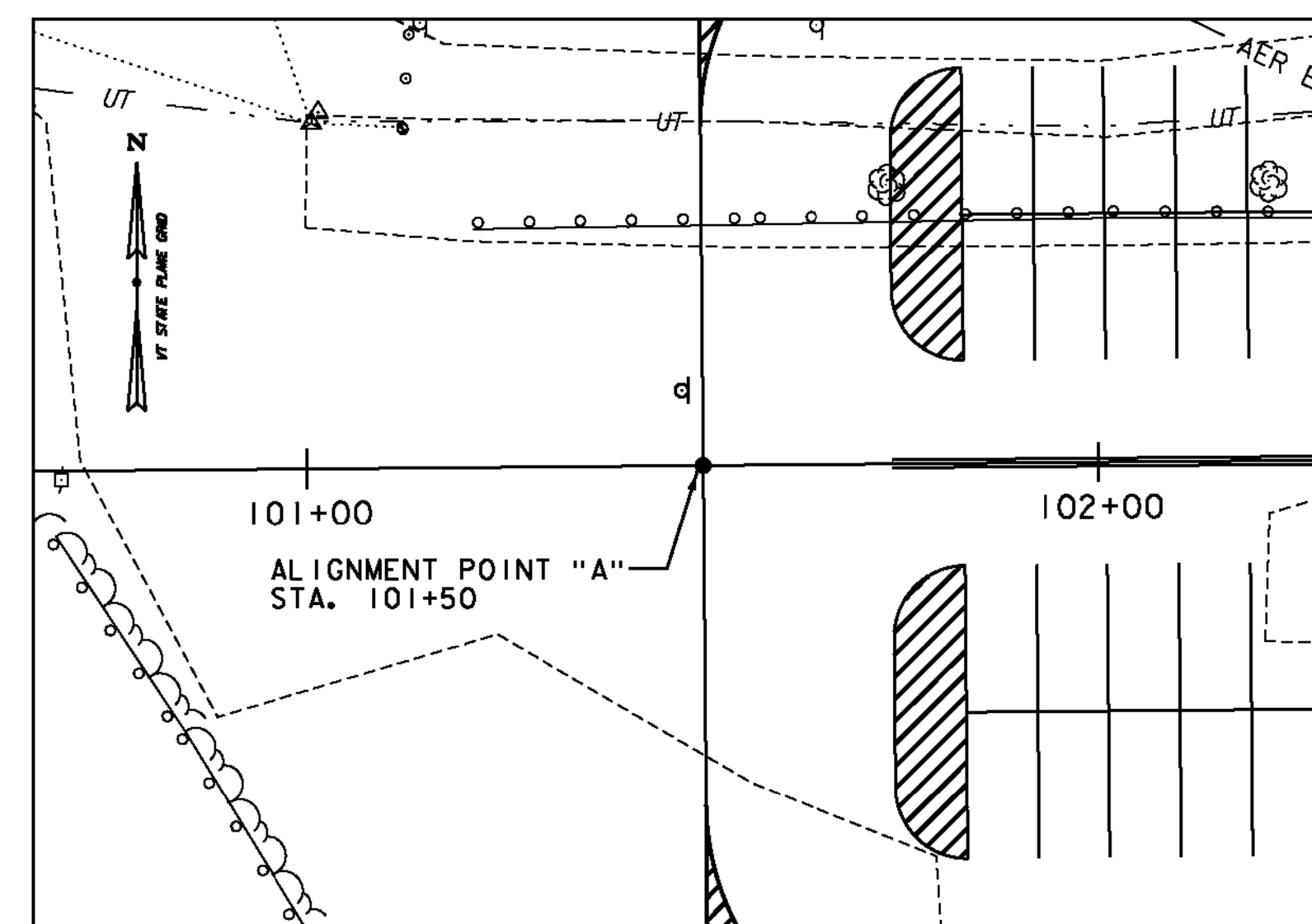
CONTROL POINT #1



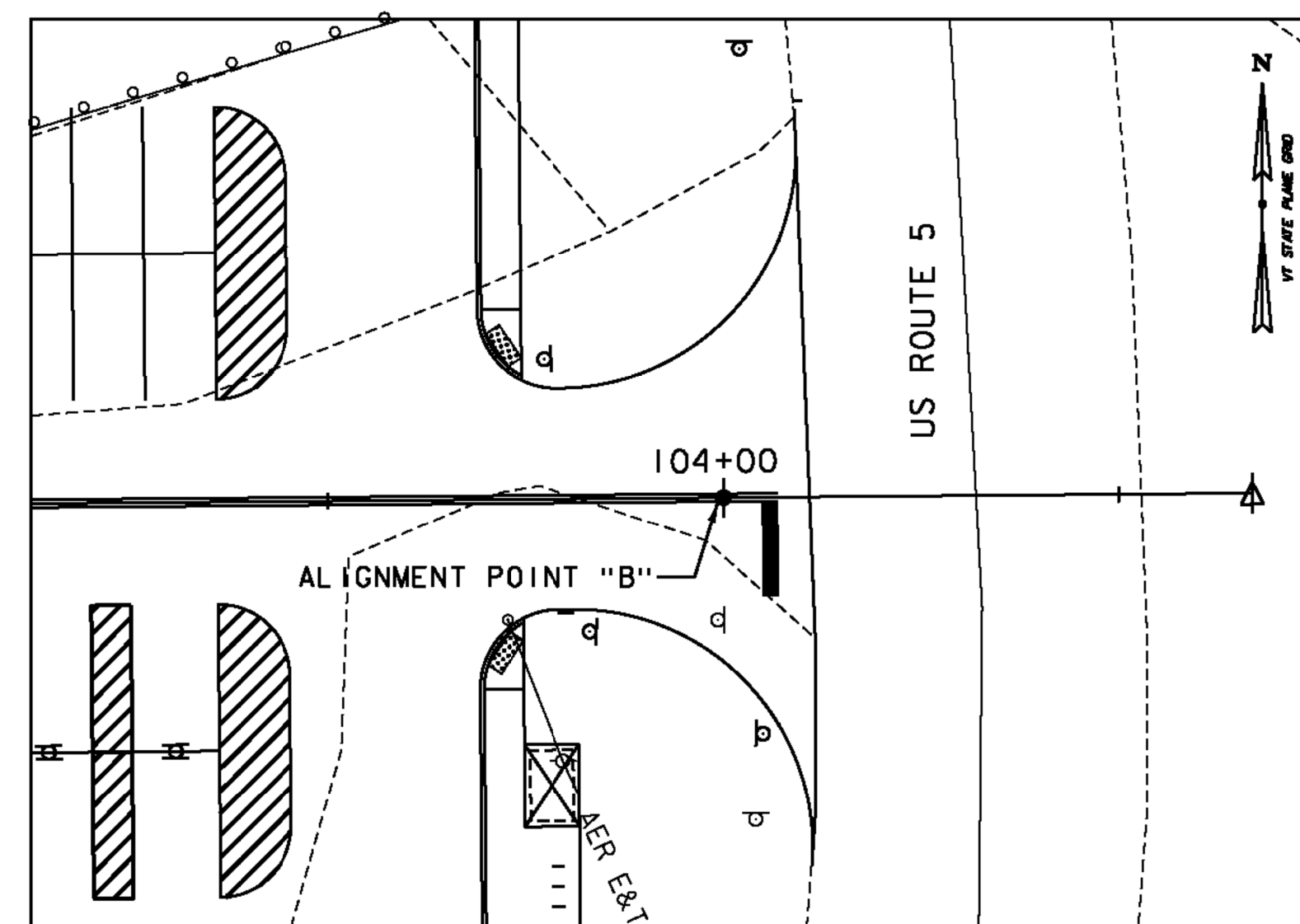
CONTROL POINT #2

| CONTROL POINTS |             |                                       |           |
|----------------|-------------|---------------------------------------|-----------|
| POINT          | NORTHING    | EASTING                               | ELEVATION |
| 1              | 278559.697' | 1656750.806'                          | 308.85'   |
| 2              | 278399.643' | <del>165831.06'</del><br>1656831.061' | 312.85'   |

### ALIGNMENT TIES



ALIGNMENT POINT A



ALIGNMENT POINT B

| ALIGNMENT POINTS |             |              |           |           |
|------------------|-------------|--------------|-----------|-----------|
| POINT            | NORTHING    | EASTING      | STATION   | ELEVATION |
| A                | 278516.416' | 1656800.309' | 101+50.00 | 311.97'   |
| B                | 278518.567' | 1657050.299' | 104+00.00 | 313.72'   |

DATUM  
 VERTICAL NAVD 88  
 HORIZONTAL NAD 83 (1996)  
 ADJUSTMENT none

PROJECT NAME: SPRINGFIELD  
 PROJECT NUMBER: CMG PARK (32)

FILE NAME: z09k250+1e.dgn  
 PROJECT LEADER: G. SANTY  
 DESIGNED BY: I. MAYNARD  
 SURVEY CONTROL AND TIES

PLOT DATE: 6/25/2014  
 DRAWN BY: I. MAYNARD  
 CHECKED BY: M. FOISY  
 SHEET 11 OF 43

