

GPS CONTROL POINTS

HVCTRL #1

A97011

NORTH = 589435.866
 EAST = 1462663.751
 ELEV. = 370.24

DESCRIBED BY VERMONT GEODETIC SURVEY 1997 (CHR) GENERAL LOCATION, NEW HAVEN, VT. OWNERSHIP, NELSONS SERVICE CENTER, INC., RR 1 BOX 118, NEW HAVEN, VT.05472. CONTACT MARK A.NELSON. PHONE 802-453-5091. TO REACH FROM THE INTERSECTION OF U.S.ROUTE 7 AND VT ROUTE 17 EAST IN NEW HAVEN JUNCTION GO SOUTH ALONG U.S.ROUTE 7 FOR 0.5 MI (0.8 KM) TO THE INTERSECTION OF A GRAVEL DRIVE RIGHT LEADING TO NELSONS SERVICE CENTER. TURN RIGHT AND GO WEST ALONG THE GRAVEL DRIVE FOR ABOUT 50 M (164.0 FT) TO THE SERVICE CENTER AND SITE OF MARK ON A GRASSY KNOLL SOUTH OF THE BUILDING. THE MARK IS SET FLUSH WITH GROUND SURFACE IN THE TOP OF A DEEPLY IMBEDDED 3.3 M (10.8 FT) X 1.0 M (3.3 FT) EXPOSED IRREGULAR MASS OF CONCRETE. IT IS 51.7 M (169.6 FT) WEST OF AND ABOUT 3 M (9.8 FT) HIGHER THAN THE WEST EDGE OF PAVEMENT OF U.S.ROUTE 7, 23.7 M (77.8 FT) SOUTHWEST OF THE SOUTHWEST CORNER OF THE SERVICE STATION, 27.8 M (91.2 FT) NORTHWEST OF THE NORTHWEST CORNER OF A MOBILE HOME, 1.0 M (3.3 FT) WEST OF A NORTH-SOUTH WOVEN WIRE FENCE, AND 16.9 M (55.4 FT) SOUTHWEST OF POLE NO.4 AND A FIBERGLASS WITNESS POST. NOTE, MARK IS INTERVISIBLE WITH MARK A97010.

HVCTRL #2

A97010

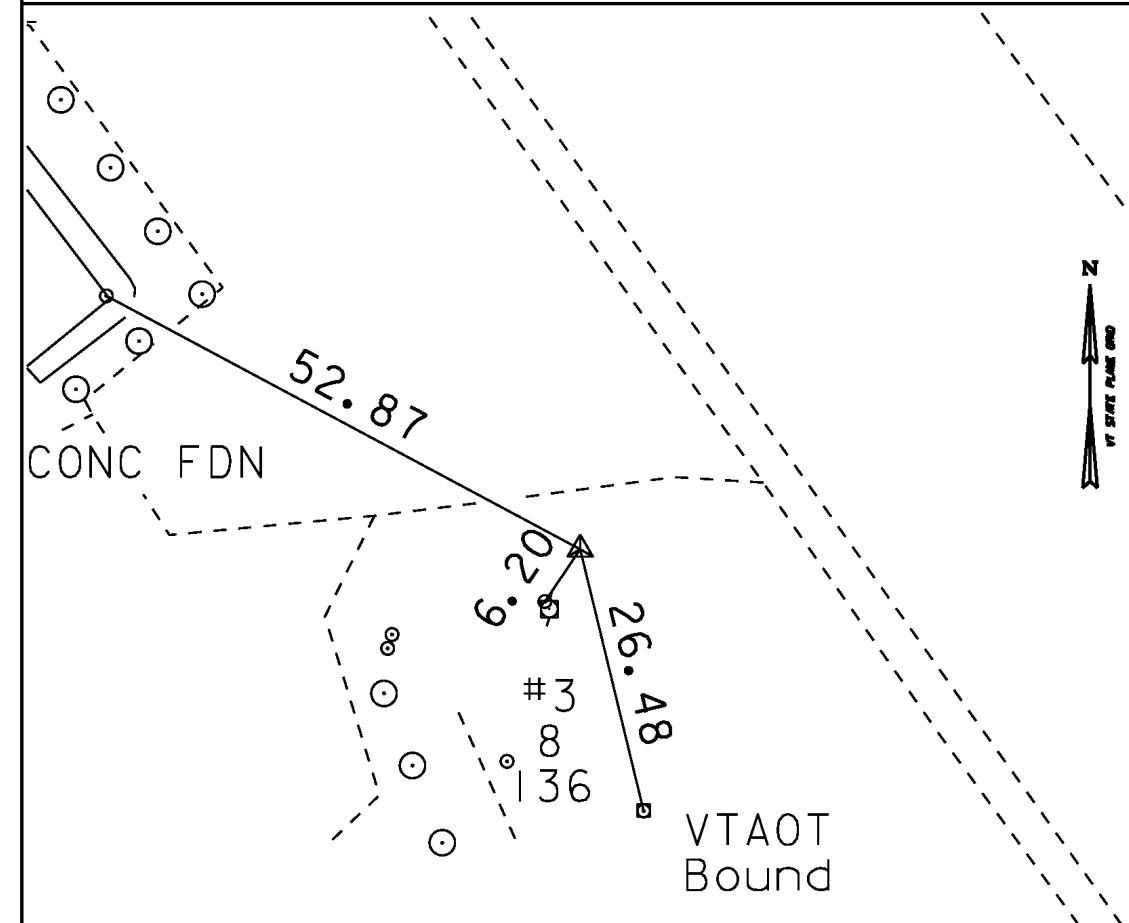
NORTH = 591974.925
 EAST = 1461715.930
 ELEV. = 284.37

DESCRIBED BY VERMONT GEODETIC SURVEY 1997 (CHR) GENERAL LOCATION, NEW HAVEN, VT. OWNERSHIP, CECIL AND RAMONA MORSE, P.O.BOX 93, NEW HAVEN, VT.05472. PHONE 802-388-2641. TO REACH FROM THE INTERSECTION OF VT ROUTE 17 EAST AND U.S.ROUTE 7 IN NEW HAVEN JUNCTION GO EAST ALONG VT ROUTE 17 FOR 0.05 MI (0.08 KM) TO THE NEW HAVEN POST OFFICE AND THE MARK ON THE LEFT IN A GRASS ISLAND BETWEEN THE PAVED PARKING LOT FOR THE POST OFFICE AND VT ROUTE 17. THE MARK IS SET FLUSH WITH GROUND SURFACE IN THE TOP OF A 30 CM DIAMETER CONCRETE MONUMENT POURED 1.4 M (4.6 FT) DEEP. IT IS 8.3 M (27.2 FT) NORTH OF AND ABOUT LEVEL WITH THE CENTERLINE OF VT ROUTE 17, 1.6 M (5.2 FT) SOUTH OF THE SOUTH EDGE OF THE PAVED PARKING LOT, 18.0 M (59.1 FT) SOUTHWEST OF THE SOUTHWEST CORNER OF THE POST OFFICE, 18.5 M (60.7 FT) SOUTHWEST OF THE SOUTHWEST CORNER OF THE POST OFFICE, AND 27.3 M (89.6 FT) NORTHEAST OF POLE NO.136B/136/128/134. NOTE, MARK IS INTERVISIBLE WITH MARK A97011.

TRAVERSE TIES

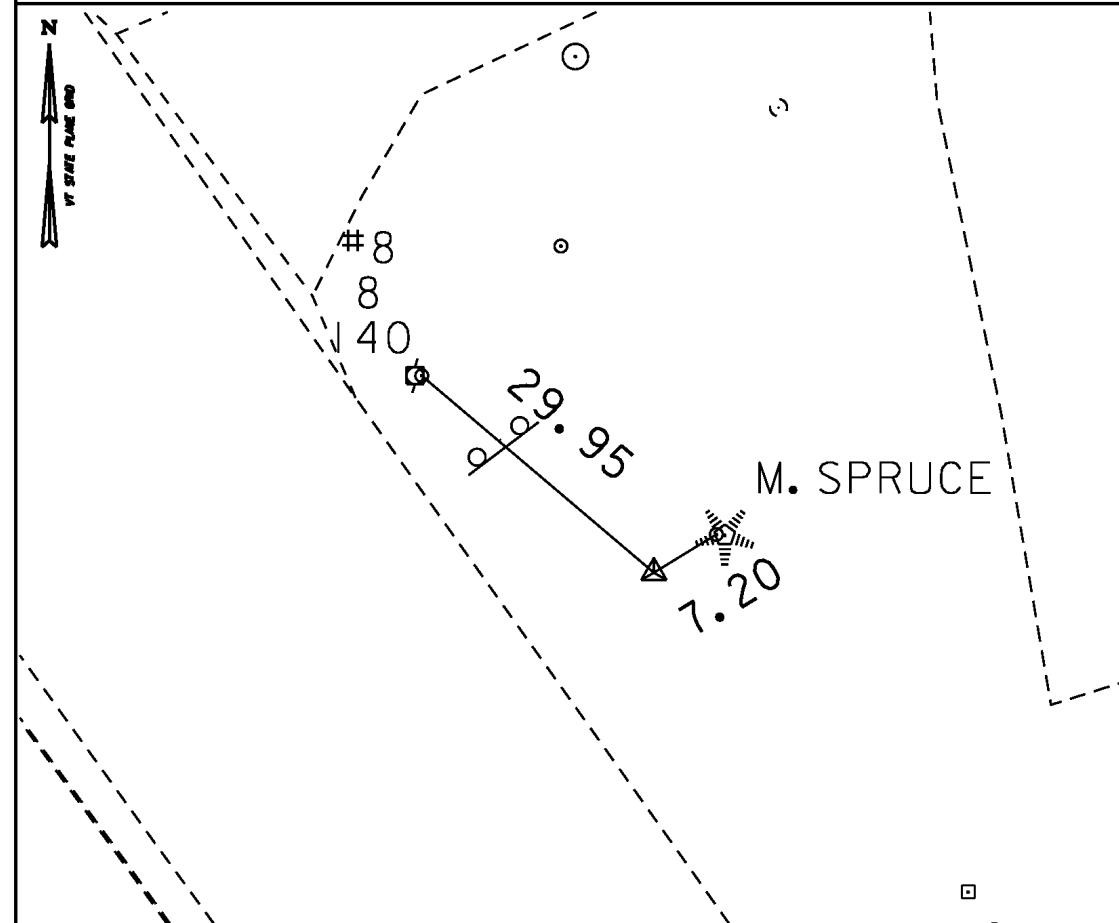
HVCTRL #3

NORTH = 591853.68
 EAST = 1461356.41
 ELEV. = 280.99



HVCTRL #4

NORTH = 592656.79
 EAST = 1460864.41
 ELEV. = 282.64



* Main Traverse Completed 09/02/08 by L.Orvis P.C. & R.Bokus

ALIGNMENT TIES

NORTH =
 EAST =
 ELEV. =

NORTH =
 EAST =
 ELEV. =

NORTH =
 EAST =
 ELEV. =

NORTH =
 EAST =
 ELEV. =

NORTH =
 EAST =
 ELEV. =

DATUM
 VERTICAL NAVD 88
 HORIZONTAL NAD 83(07)
 ADJUSTMENT Compass

PROJECT NAME: NEW HAVEN
 PROJECT NUMBER: RAIL 5307(16)

FILE NAME: z09g070/RAIL/1.dgn PLOT DATE: 13-JUL-2010
 PROJECT LEADER: J.B.McCARTHY DRAWN BY: R.BULLOCK
 DESIGNED BY: CHECKED BY:
 TIE SHEET SHEET 7 OF 18