

604.412, OR 604.415 REHAB.
DIS. CBS OR MHS. CLASS I. OR II

STA. 0+41, RT
STA. 2+24, LT
STA. 2+24, RT
STA. 3+32, LT

616.35 TREATED TIMBER CURB

SLIP RAMP M STA. 0+98 TO 1+44, RT

621.20 STEEL BEAM GUARDRAIL, GALVANIZED

SLIP RAMP M STA. 0+98.0 TO MAINLINE STA. 3+50.0, RT

621.80 REMOVAL AND DISPOSAL OF GUARDRAIL

SLIP RAMP M STA. 0+98 TO MAINLINE STA. 3+50, RT

646.401 DURABLE 4 INCH WHITE LINE, TYPE I TAPE

(ALL LINES WILL INCLUDE EDGE LINE BREAKS AND RADI FOR SIDE ROADS)

MAINLINE STA. 0+34 TO 1+79, SOLID RT

MAINLINE STA. 0+34 TO 2+48, SOLID LT

MAINLINE STA. 1+79 TO 2+33, DOTTED RT

SLIP RAMP N STA. 100+00 TO 103+02, SOLID RT

SLIP RAMP M STA. 0+98 TO 4+55, SOLID RT

MAINLINE STA. 2+92 TO 3+50, SOLID RT

MAINLINE STA. 3+32 TO 3+50, SOLID LT

646.411 DURABLE 4 INCH YELLOW LINE, TYPE I TAPE

(ALL LINES WILL INCLUDE C BREAKS FOR SIDE ROADS)

MAINLINE STA. 0+42 TO 0+57, DOUBLE SOLID LT & RT

MAINLINE STA. 0+57 TO 3+50, SOLID LT & RT

SLIP RAMP N STA. 100+74 TO 103+02, SOLID LT

SLIP RAMP M STA. 0+98 TO 3+37, SOLID LT

646.451 DURABLE 8 INCH YELLOW LINE, TYPE I TAPE

MAINLINE STA. 0+42 TO 0+57, SOLID LT & RT (DIAGONALS)

MAINLINE STA. 2+24 TO 2+78, SOLID LT & RT (DIAGONALS)

646.481 DURABLE 24 INCH STOP BAR, TYPE I TAPE

MAINLINE STA. 0+45, LT

646.491 DURABLE LETTER OR SYMBOL, TYPE I TAPE

MAINLINE STA. 0+55, LT "STOP"

SLIP RAMP N STA. 102+67, C - YIELD BAR

SLIP RAMP M STA. 1+26, C - "YIELD"

SLIP RAMP M STA. 1+66, C - "AHEAD"

SLIP RAMP M STA. 3+02, C - YIELD BAR

646.602 TEMPORARY 4 INCH WHITE LINE, PAINT

(ALL LINES WILL INCLUDE EDGE LINE BREAKS AND RADI FOR SIDE ROADS)

MAINLINE STA. 0+34 TO 1+79, SOLID RT

MAINLINE STA. 0+34 TO 2+48, SOLID LT

MAINLINE STA. 1+79 TO 2+33, DOTTED RT

SLIP RAMP N STA. 100+00 TO 103+02, SOLID RT

SLIP RAMP M STA. 0+98 TO 4+55, SOLID RT

MAINLINE STA. 2+92 TO 3+50, SOLID RT

MAINLINE STA. 3+32 TO 3+50, SOLID LT

646.612 TEMPORARY 4 INCH YELLOW LINE, PAINT

(ALL LINES WILL INCLUDE C BREAKS FOR SIDE ROADS)

MAINLINE STA. 0+42 TO 0+57, DOUBLE SOLID LT & RT

MAINLINE STA. 0+57 TO 3+50, SOLID LT & RT

SLIP RAMP N STA. 100+74 TO 103+02, SOLID LT

SLIP RAMP M STA. 0+98 TO 3+37, SOLID LT

646.652 TEMPORARY 8 INCH YELLOW LINE, PAINT

MAINLINE STA. 0+42 TO 0+57, SOLID LT & RT (DIAGONALS)

MAINLINE STA. 2+24 TO 2+78, SOLID LT & RT (DIAGONALS)

646.682 TEMPORARY 24 INCH STOP BAR, PAINT

MAINLINE STA. 0+45, LT

646.692 TEMPORARY LETTER OR SYMBOL, PAINT

MAINLINE STA. 0+55, LT "STOP"

SLIP RAMP N STA. 102+67, C - YIELD BAR

SLIP RAMP M STA. 1+26, C - "YIELD"

SLIP RAMP M STA. 1+66, C - "AHEAD"

SLIP RAMP M STA. 3+02, C - YIELD BAR

646.81 PAINTED CURB

MAINLINE STA. 0+56 TO 2+25, LT & RT

646.82 PAINTED ISLAND

MAINLINE STA. 0+56 TO 2+25, C

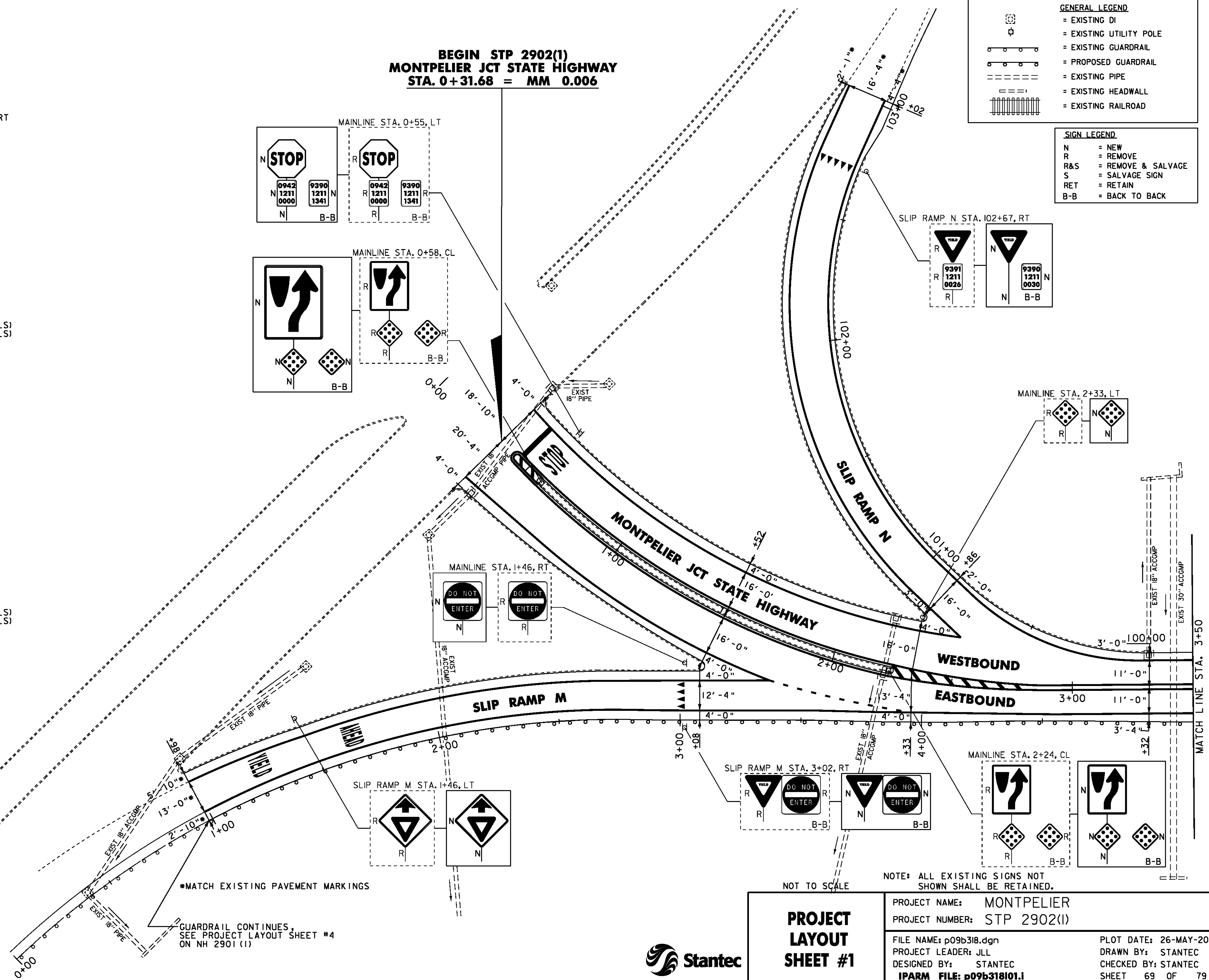
675.50 REMOVING SIGNS

AS SHOWN - 16

**BEGIN STP 2902(1)
MONTPELIER JCT STATE HIGHWAY
STA. 0+31.68 = MM 0.006**

GENERAL LEGEND	
	= EXISTING DI
	= EXISTING UTILITY POLE
	= EXISTING GUARDRAIL
	= PROPOSED GUARDRAIL
	= EXISTING PIPE
	= EXISTING HEADWALL
	= EXISTING RAILROAD

SIGN LEGEND	
N	= NEW
R	= REMOVE
R&S	= REMOVE & SALVAGE
S	= SALVAGE SIGN
RET	= RETAIN
B-B	= BACK TO BACK



NOTE: ALL EXISTING SIGNS NOT SHOWN SHALL BE RETAINED.

PROJECT LAYOUT SHEET #1	PROJECT NAME: MONTPELIER	PLOT DATE: 26-MAY-2011
	PROJECT NUMBER: STP 2902(1)	DRAWN BY: STANTEC
	FILE NAME: p09b318.dgn	CHECKED BY: STANTEC
	PROJECT LEADER: JLL	SHEET 69 OF 79
	DESIGNED BY: STANTEC	
	IPARM FILE: p09b318(1).i	



*MATCH EXISTING PAVEMENT MARKINGS

GUARDRAIL CONTINUES, SEE PROJECT LAYOUT SHEET #4 ON NH 2901 (1)

NOT TO SCALE