

604.412 OR 604.415 REHAB,  
DIS. CBS OR MHS, CLASS 1 OR 11  
STA. 39+81, RT

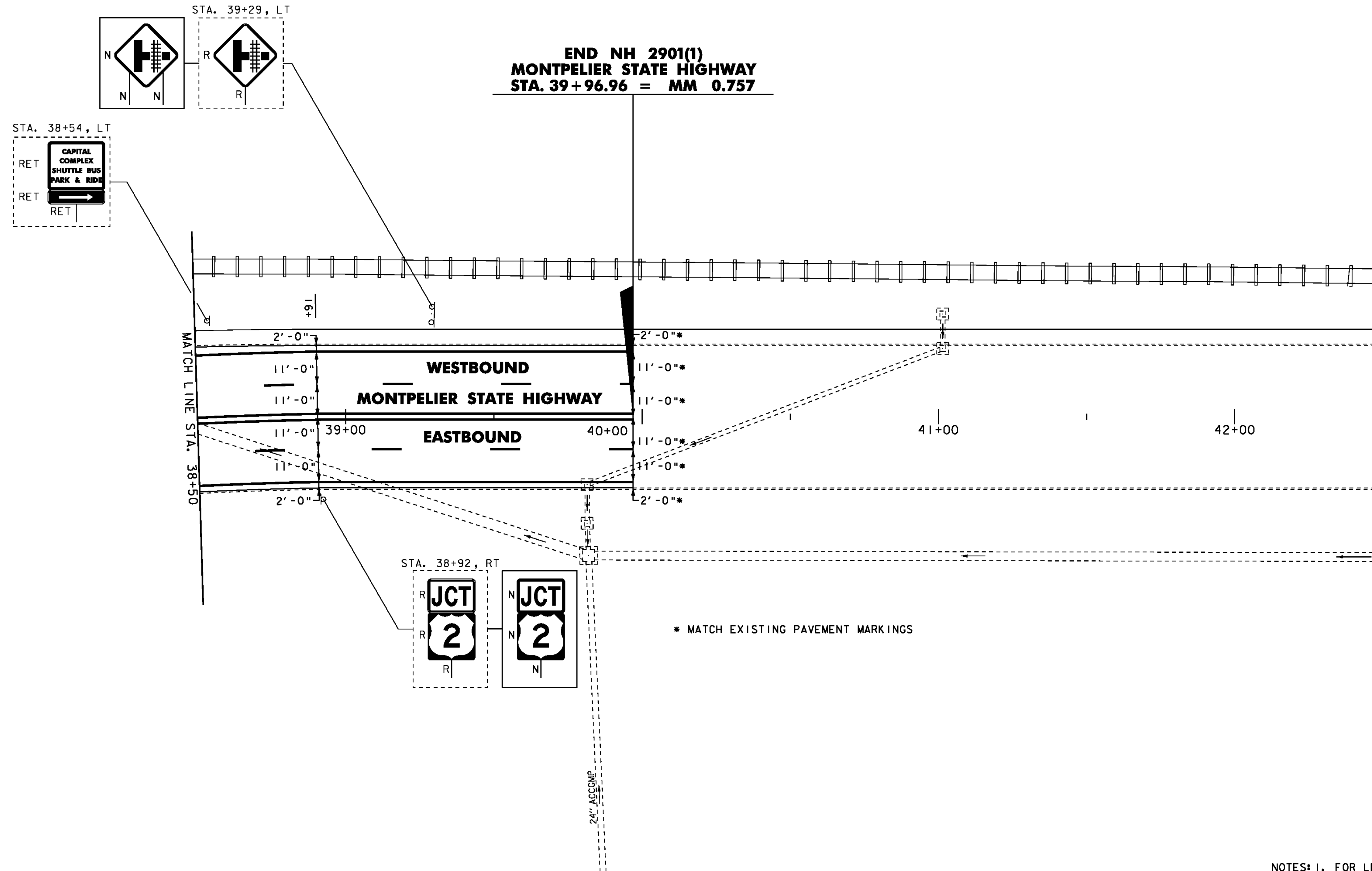
646.401 DURABLE 4 INCH WHITE LINE, TYPE I TAPE  
(ALL LINES WILL INCLUDE EDGE LINE BREAKS AND  
RADI1 FOR SIDE ROADS)  
STA. 38+50 TO 39+97, SOLID LT & RT  
STA. 38+50 TO 39+97, DASHED LT & RT

646.411 DURABLE 4 INCH YELLOW LINE, TYPE I TAPE  
(ALL LINES WILL INCLUDE C BREAKS FOR SIDE ROADS)  
STA. 38+50 TO 39+97, SOLID LT & RT

646.602 TEMPORARY 4 INCH WHITE LINE, PAINT  
(ALL LINES WILL INCLUDE EDGE LINE BREAKS AND  
RADI1 FOR SIDE ROADS)  
STA. 38+50 TO 39+97, SOLID LT & RT  
STA. 38+50 TO 39+97, DASHED LT & RT

675.50 REMOVING SIGNS  
AS SHOWN - 3

646.612 TEMPORARY 4 INCH YELLOW LINE, PAINT  
(ALL LINES WILL INCLUDE C BREAKS FOR SIDE ROADS)  
STA. 38+50 TO 39+97, SOLID LT & RT



NOTES: 1. FOR LEGENDS, SEE LAYOUT SHEET #1  
2. ALL EXISTING SIGNS NOT SHOWN SHALL BE RETAINED.

NOT TO SCALE

**PROJECT LAYOUT SHEET #8**

PROJECT NAME: MONTPELIER  
PROJECT NUMBER: NH 290(I)

FILE NAME: p09B316.dgn  
PROJECT LEADER: JLL  
DESIGNED BY: STANTEC  
IPARM FILE: p09b316108.i

PLOT DATE: 26-MAY-2011  
DRAWN BY: STANTEC  
CHECKED BY: STANTEC  
SHEET 49 OF 79

