

604.412 OR 604.415 REHAB,
DLS, CBS OR MHS, CLASS 1 OR 11
STA. 5+93, RT
STA. 6+93, RT
STA. 8+93, LT
STA. 8+93, RT

616.35 TREATED TIMBER CURB
STA. 5+28 TO 8+98, LT
STA. 5+93 TO 9+50, RT

616.47 BITUMINOUS CONCRETE GUTTERS AND
TRAFFIC ISLANDS
STA. 4+97.0, RT

621.20 STEEL BEAM GUARDRAIL, GALVANIZED
STA. 3+50.0 TO 4+17.0, LT
STA. 4+71.0 TO 9+50.0, LT
STA. 5+28.0 TO 5+90.5, RT (MEDIAN)
STA. 5+65.5 TO 6+28.0, LT (MEDIAN)
STA. 5+88.5 TO 9+50.0, RT

621.50 MANUFACTURED TERMINAL SECTION, FLARED
STA. 4+17.0 TO 4+54.5, LT
STA. 4+90.5 TO 5+28.0, RT
STA. 5+51.0 TO 5+88.5, RT
STA. 5+28.0 TO 5+65.5, LT
STA. 5+90.5 TO 6+28.0, RT
STA. 6+28.0 TO 6+65.5, LT

621.60 ANCHOR FOR STEEL BEAM RAIL
STA. 4+71.0, LT

621.80 REMOVAL AND DISPOSAL OF GUARDRAIL
STA. 3+50 TO 4+56, LT
STA. 4+71 TO 9+50, LT
STA. 5+32 TO 6+04, LT & RT
STA. 5+51 TO 9+50, RT

646.401 DURABLE 4 INCH WHITE LINE, TYPE I TAPE
(ALL LINES WILL INCLUDE EDGE LINE BREAKS AND
RADI1 FOR SIDE ROADS)
STA. 3+50 TO 4+58, SOLID RT
STA. 3+50 TO 5+36, SOLID LT
STA. 4+63 TO 9+50, SOLID RT
STA. 5+44 TO 9+50, SOLID LT
STA. 7+69 TO 9+50, DASHED RT

646.411 DURABLE 4 INCH YELLOW LINE, TYPE I TAPE
(ALL LINES WILL INCLUDE C BREAKS FOR SIDE ROADS)
STA. 3+50 TO 9+50, SOLID LT & RT

646.441 DURABLE 8 INCH WHITE LINE, TYPE I TAPE
STA. 4+58 TO 7+69, SOLID RT
STA. 4+59 TO 5+78, SOLID RT
STA. 5+36 TO 8+46, SOLID LT
STA. 5+38 TO 6+23, SOLID LT (INCLUDES DIAGONALS)
STA. 8+46 TO 9+50, DOTTED LT

646.491 DURABLE LETTER OR SYMBOL, TYPE I TAPE
STA. 6+85, LT ARROW
STA. 7+63, LT "ONLY"
STA. 8+43, LT ARROW

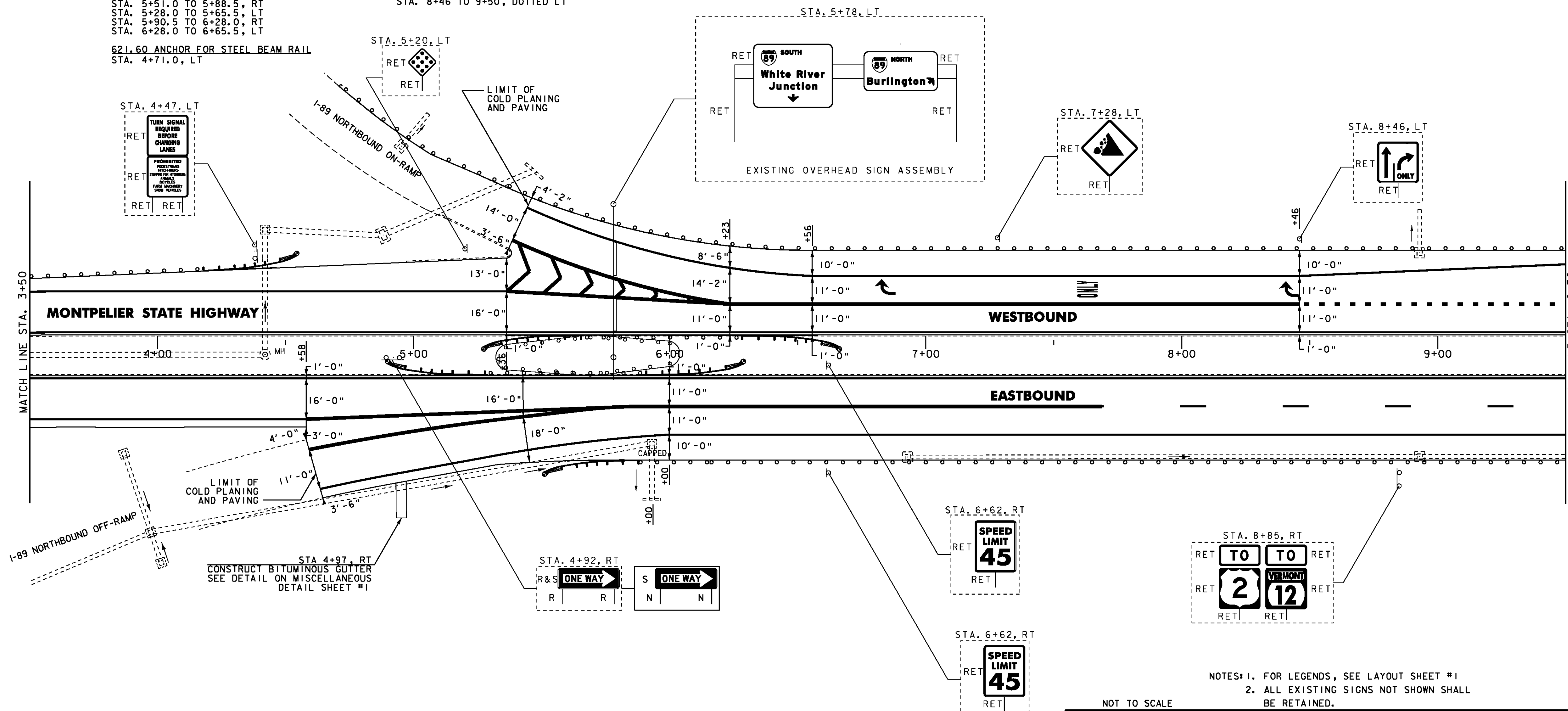
646.602 TEMPORARY 4 INCH WHITE LINE, PAINT
(ALL LINES WILL INCLUDE EDGE LINE BREAKS AND
RADI1 FOR SIDE ROADS)
STA. 3+50 TO 4+58, SOLID RT
STA. 3+50 TO 5+36, SOLID LT
STA. 4+63 TO 9+50, SOLID RT
STA. 5+44 TO 9+50, SOLID LT
STA. 7+69 TO 9+50, DASHED RT

646.612 TEMPORARY 4 INCH YELLOW LINE, PAINT
(ALL LINES WILL INCLUDE C BREAKS FOR SIDE ROADS)
STA. 3+50 TO 9+50, SOLID LT & RT

646.642 TEMPORARY 8 INCH WHITE LINE, PAINT
STA. 4+58 TO 7+69, SOLID RT
STA. 4+59 TO 5+78, SOLID RT
STA. 5+36 TO 8+46, SOLID LT
STA. 5+38 TO 6+23, SOLID LT (INCLUDES DIAGONALS)
STA. 8+46 TO 9+50, DOTTED LT

646.692 TEMPORARY LETTER OR SYMBOL, PAINT
STA. 6+85, LT ARROW
STA. 7+63, LT "ONLY"
STA. 8+43, LT ARROW

675.50 REMOVING SIGNS
AS SHOWN - 1
675.60 ERECTING SALVAGED SIGNS
AS SHOWN - 1



NOTES: 1. FOR LEGENDS, SEE LAYOUT SHEET #1
2. ALL EXISTING SIGNS NOT SHOWN SHALL
BE RETAINED.

NOT TO SCALE

**PROJECT
LAYOUT
SHEET #2**

PROJECT NAME: MONTPELIER
PROJECT NUMBER: NH 290(I)

FILE NAME: p09B316.dgn
PROJECT LEADER: JLL
DESIGNED BY: STANTEC
IPARM FILE: p09b316102.1

PLOT DATE: 26-MAY-2011
DRAWN BY: STANTEC
CHECKED BY: STANTEC
SHEET 43 OF 79

