

**BEGIN R.O.W. PROJECT
BRF 030-3(5)
STA. 270+67 24.75' LT**

**END R.O.W. PROJECT
BRF 030-3(5)
STA. 273+84 24.75' LT**

REMOVAL AND DISPOSAL OF GUARDRAIL
 STA 271+08.75 - STA 272+34.42 LT
 STA 272+26.69 - STA 272+48.18 RT
 STA 272+80.89 - STA 273+13.50 LT
 STA 272+92.93 - STA 273+53.34 RT

**BRIDGE RAILING, GALVANIZED 3 RAIL
BOX BEAM**
 STA 272+27.58 - STA 272+87.58 LT
 STA 272+42.42 - STA 273+02.39 RT

CONSTRUCT PAVED DRIVE
 STA 750+36.80 - STA 750+54.30 RT - 17'-6"
 STA 273+17.49 - STA 273+83.49 LT - 66'-0"

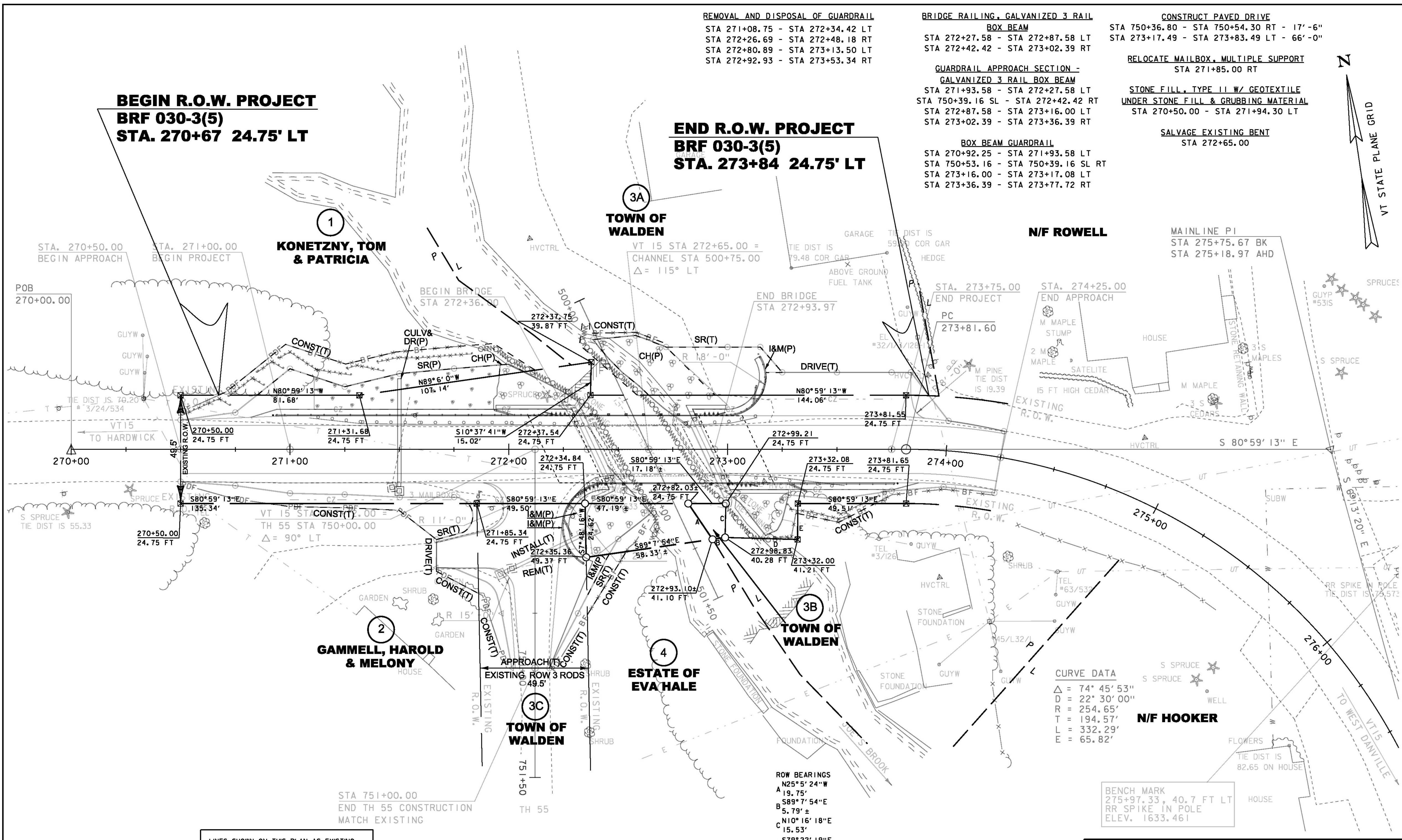
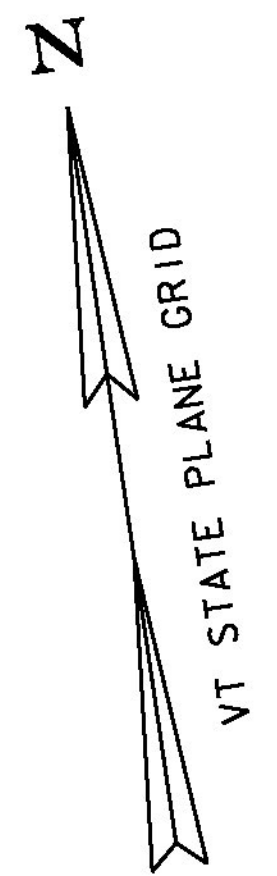
RELOCATE MAILBOX, MULTIPLE SUPPORT
 STA 271+85.00 RT

**STONE FILL, TYPE II W/ GEOTEXTILE
UNDER STONE FILL & GRUBBING MATERIAL**
 STA 270+50.00 - STA 271+94.30 LT

SALVAGE EXISTING BENT
 STA 272+65.00

**GUARDRAIL APPROACH SECTION -
GALVANIZED 3 RAIL BOX BEAM**
 STA 271+93.58 - STA 272+27.58 LT
 STA 270+39.16 SL - STA 272+42.42 RT
 STA 272+87.58 - STA 273+16.00 LT
 STA 273+02.39 - STA 273+36.39 RT

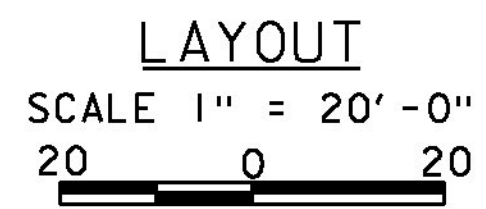
BOX BEAM GUARDRAIL
 STA 270+92.25 - STA 271+93.58 LT
 STA 750+53.16 - STA 750+39.16 SL RT
 STA 273+16.00 - STA 273+17.08 LT
 STA 273+36.39 - STA 273+77.72 RT



EXISTING BRIDGE DATA
 CONCRETE T-BEAM
 LENGTH = 43'-0"
 WIDTH = 22.3' CURB TO CURB
 BUILT IN 1933

LINES SHOWN ON THIS PLAN AS EXISTING
 PROPERTY LINES P/L ARE BELIEVED TO
 BE ACCURATE BUT SHOULD NOT BE RELIED
 UPON FOR PURPOSES UNRELATED TO THE
 STATE OF VERMONT'S ACQUISITION OF LAND
 AND RIGHTS FOR THIS PROJECT.

**FOR R.O.W.
USE ONLY**



ROW BEARINGS
 N25°5'24"W
 A 19.75'
 S89°7'54"E
 B 5.79'±
 N10°16'18"E
 C 15.53'
 S79°22'19"E
 D 33.18'
 N9°19'9"E
 E 16.41'

CURVE DATA
 $\Delta = 74^\circ 45' 53''$
 $D = 22^\circ 30' 00''$
 $R = 254.65'$
 $T = 194.57'$
 $L = 332.29'$
 $E = 65.82'$

BENCH MARK
 275+97.33, 40.7 FT LT
 RR SPIKE IN POLE
 ELEV. 1633.461

PROJECT NAME: WALDEN
PROJECT NUMBER: BRF 030-3(5)
 FILE NAME: r09b308lay.dgn
 PROJECT LEADER: C. CARLSON
 DESIGNED BY: R. PELLETT
 R.O.W. LAYOUT SHEET 1 OF 1
 PLOT DATE: 05-DEC-2014
 DRAWN BY: J. BLANCHARD
 CHECKED BY: R. CLOUTIER
 SHEET 56 OF 56