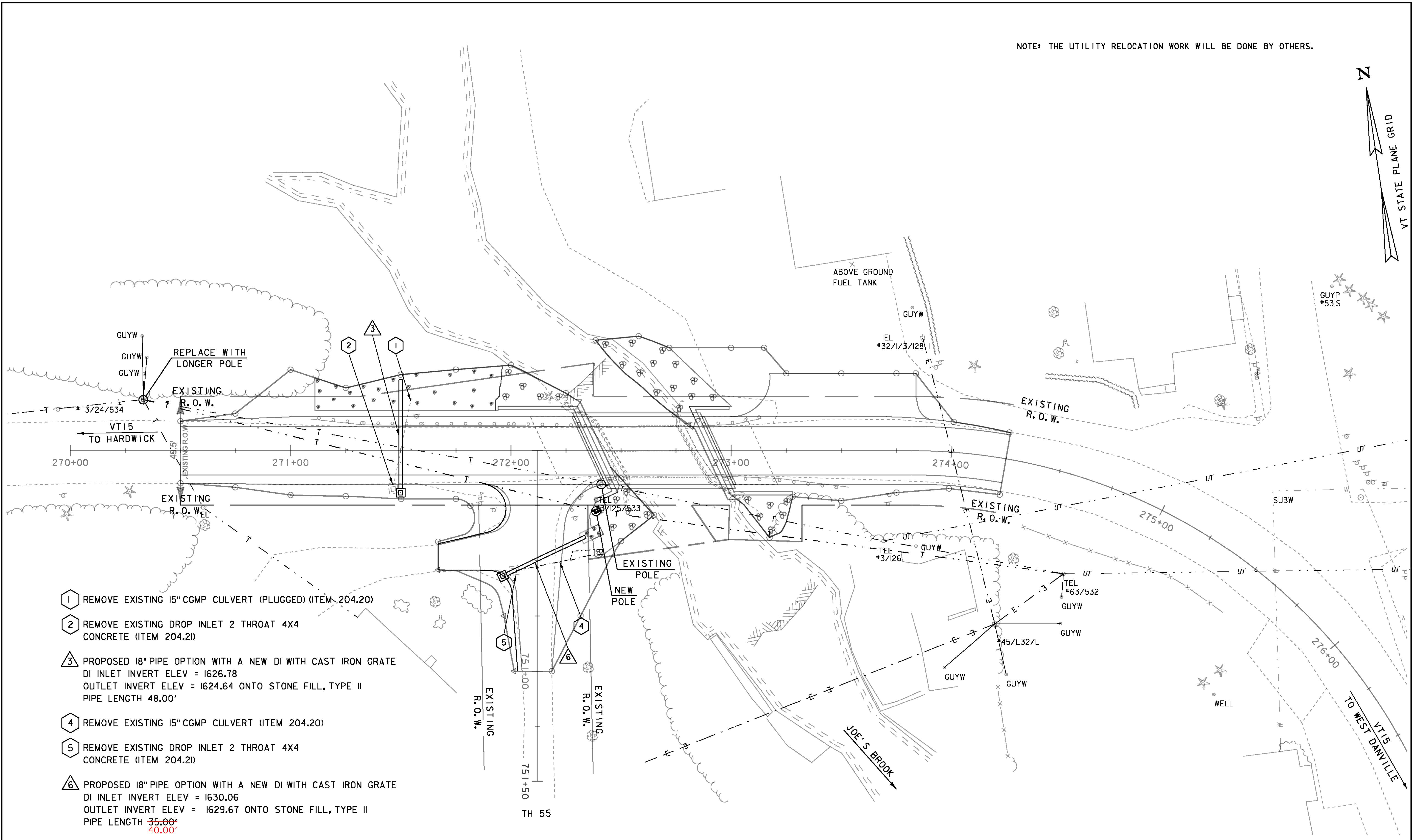
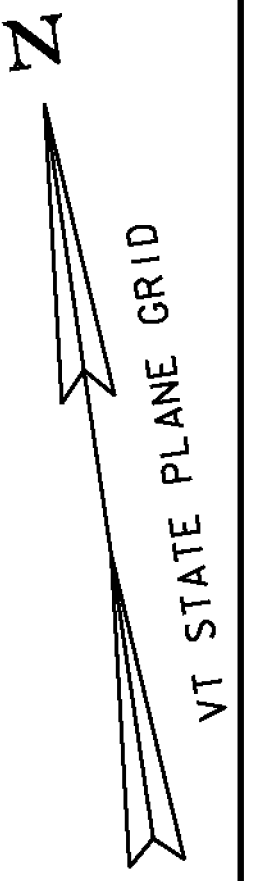


NOTE: THE UTILITY RELOCATION WORK WILL BE DONE BY OTHERS.



- 1 REMOVE EXISTING 15" CGMP CULVERT (PLUGGED) (ITEM 204.20)
- 2 REMOVE EXISTING DROP INLET 2 THROAT 4X4 CONCRETE (ITEM 204.21)
- 3 PROPOSED 18" PIPE OPTION WITH A NEW DI WITH CAST IRON GRATE
DI INLET INVERT ELEV = 1626.78
OUTLET INVERT ELEV = 1624.64 ONTO STONE FILL, TYPE II
PIPE LENGTH 48.00'
- 4 REMOVE EXISTING 15" CGMP CULVERT (ITEM 204.20)
- 5 REMOVE EXISTING DROP INLET 2 THROAT 4X4 CONCRETE (ITEM 204.21)
- 6 PROPOSED 18" PIPE OPTION WITH A NEW DI WITH CAST IRON GRATE
DI INLET INVERT ELEV = 1630.06
OUTLET INVERT ELEV = 1629.67 ONTO STONE FILL, TYPE II
PIPE LENGTH 35.00'
40.00'

DRAINAGE & UTILITIES LAYOUT

SCALE 1" = 20'-0"
20 0 20

PROJECT NAME: WALDEN	PLOT DATE: 29-DEC-2014
PROJECT NUMBER: BRF 030-3(5)	DRAWN BY: R. PELLETT
FILE NAME: s09b308_util.dgn	CHECKED BY: H. SALLS
PROJECT LEADER: C. CARLSON	SHEET 17 OF 56
DESIGNED BY: H. SALLS	
DRAINAGE & UTILITIES LAYOUT	