

**REMOVAL AND DISPOSAL OF GUARDRAIL**  
 STA 271+08.75 - STA 272+34.42 LT  
 STA 272+26.69 - STA 272+48.18 RT  
 STA 272+80.89 - STA 273+13.50 LT  
 STA 272+92.93 - STA 273+53.34 RT

**BRIDGE RAILING, GALVANIZED 3 RAIL BOX BEAM**  
 STA 272+27.58 - STA 272+87.58 LT  
 STA 272+42.42 - STA 273+02.39 RT

**CONSTRUCT PAVED DRIVE**  
 STA 750+36.80 - STA 750+54.30 RT - 17'-6"  
 STA 273+17.49 - STA 273+83.49 LT - 66'-0"

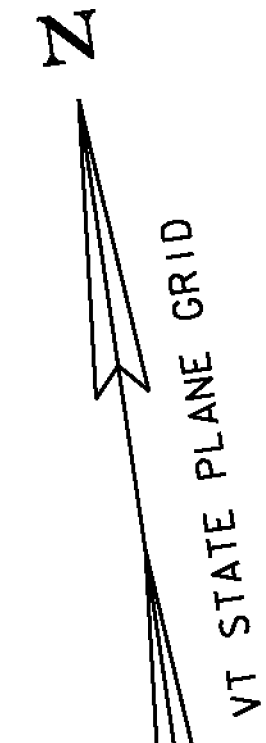
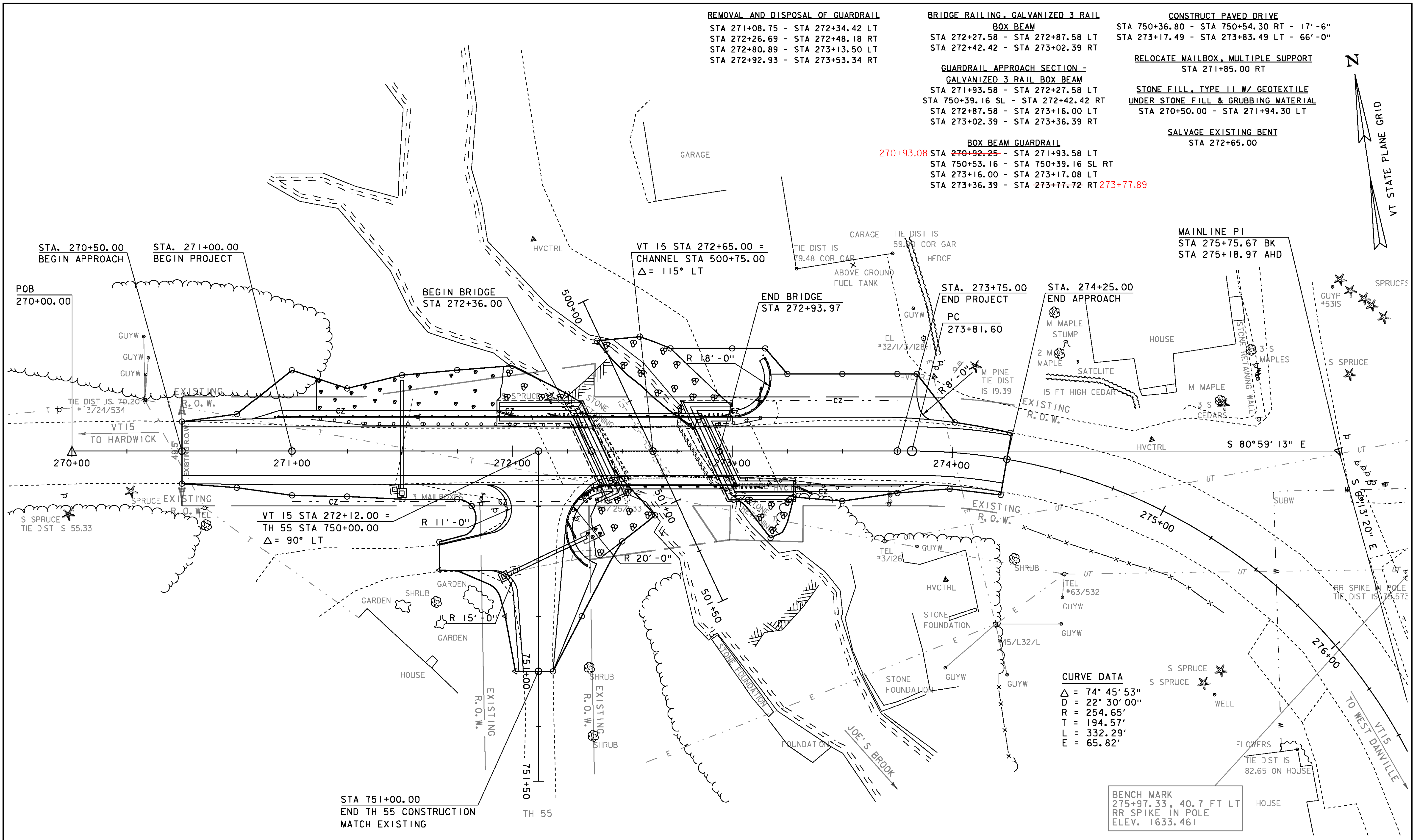
**GUARDRAIL APPROACH SECTION - GALVANIZED 3 RAIL BOX BEAM**  
 STA 271+93.58 - STA 272+27.58 LT  
 STA 750+39.16 SL - STA 272+42.42 RT  
 STA 272+87.58 - STA 273+16.00 LT  
 STA 273+02.39 - STA 273+36.39 RT

**RELOCATE MAILBOX, MULTIPLE SUPPORT**  
 STA 271+85.00 RT

**STONE FILL, TYPE II W/ GEOTEXTILE UNDER STONE FILL & GRUBBING MATERIAL**  
 STA 270+50.00 - STA 271+94.30 LT

**SALVAGE EXISTING BENT**  
 STA 272+65.00

**BOX BEAM GUARDRAIL**  
 270+93.08 STA 270+92.25 - STA 271+93.58 LT  
 STA 750+53.16 - STA 750+39.16 SL RT  
 STA 273+16.00 - STA 273+17.08 LT  
 STA 273+36.39 - STA 273+77.72 RT 273+77.89



**EXISTING BRIDGE DATA**  
 CONCRETE T-BEAM  
 LENGTH = 43'-0"  
 WIDTH = 22.3' CURB TO CURB  
 BUILT IN 1933

**LAYOUT**  
 SCALE 1" = 20'-0"  
 20 0 20

**PROJECT NAME:** WALDEN  
**PROJECT NUMBER:** BRF 030-3(5)  
**FILE NAME:** s09b308\_bdr.dgn  
**PROJECT LEADER:** C. CARLSON  
**DESIGNED BY:** H. SALLS  
**LAYOUT**  
**PLOT DATE:** 29-DEC-2014  
**DRAWN BY:** R. PELLETT  
**CHECKED BY:** H. SALLS  
**SHEET 12 OF 56**