

REMOVAL AND DISPOSAL OF GUARDRAIL
 STA 271+08.75 - STA 272+34.42 LT
 STA 272+26.69 - STA 272+48.18 RT
 STA 272+80.89 - STA 273+13.50 LT
 STA 272+92.93 - STA 273+53.34 RT

BRIDGE RAILING, GALVANIZED 3 RAIL BOX BEAM
 STA 272+27.58 - STA 272+87.58 LT
 STA 272+42.42 - STA 273+02.39 RT

CONSTRUCT PAVED DRIVE
 STA 750+36.80 - STA 750+54.30 RT - 17'-6"
 STA 273+17.49 - STA 273+83.49 LT - 66'-0"

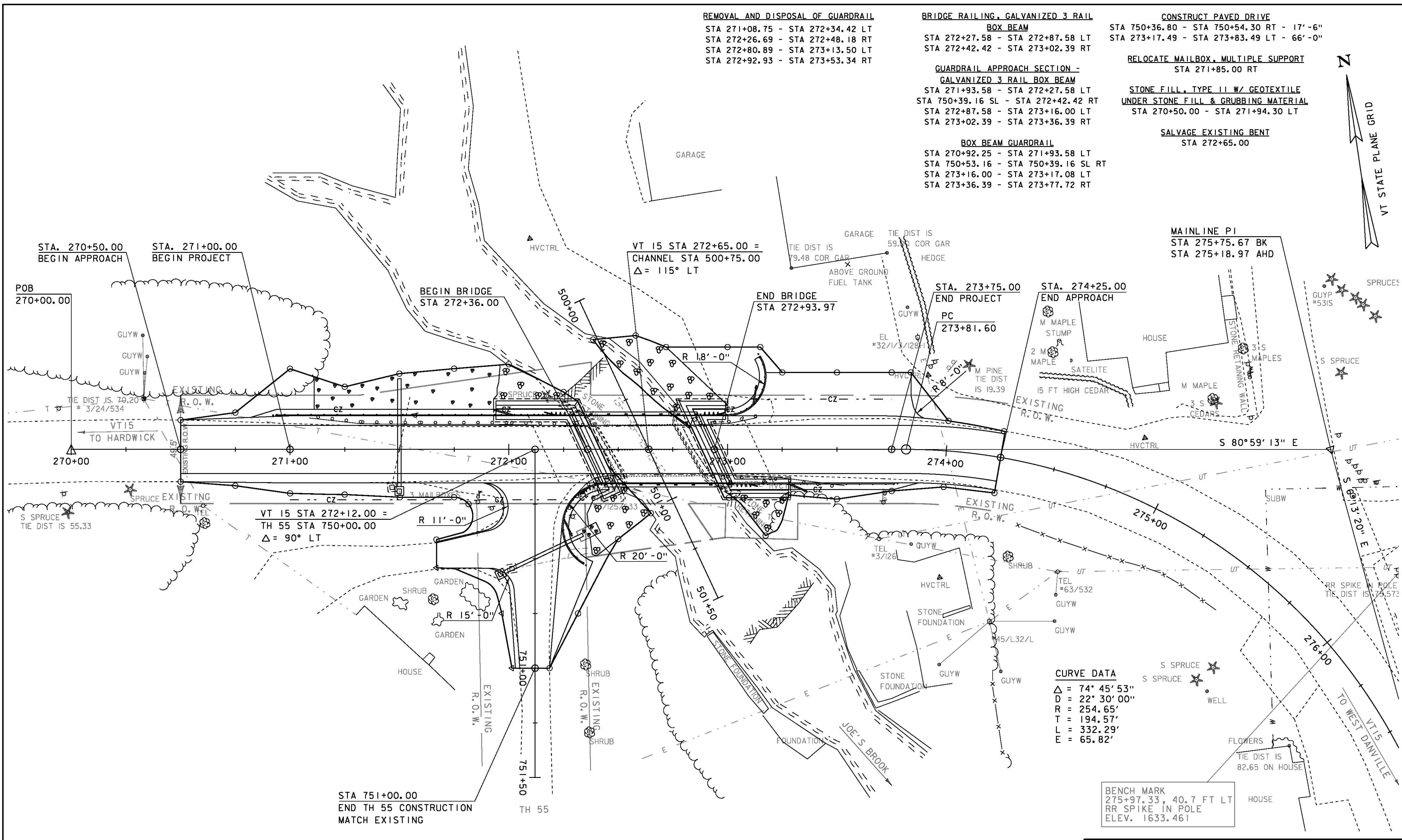
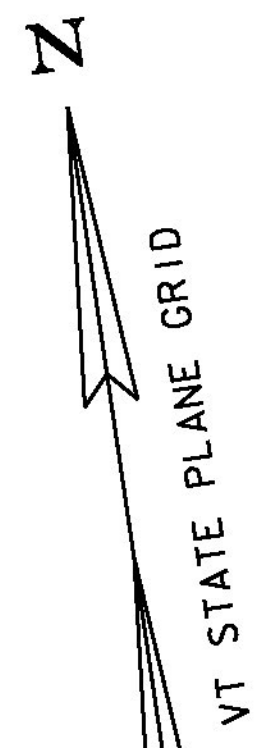
GUARDRAIL APPROACH SECTION - GALVANIZED 3 RAIL BOX BEAM
 STA 271+93.58 - STA 272+27.58 LT
 STA 750+39.16 SL - STA 272+42.42 RT
 STA 272+87.58 - STA 273+16.00 LT
 STA 273+02.39 - STA 273+36.39 RT

RELOCATE MAILBOX, MULTIPLE SUPPORT
 STA 271+85.00 RT

STONE FILL, TYPE II W/ GEOTEXTILE UNDER STONE FILL & GRUBBING MATERIAL
 STA 270+50.00 - STA 271+94.30 LT

SALVAGE EXISTING BENT
 STA 272+65.00

BOX BEAM GUARDRAIL
 STA 270+92.25 - STA 271+93.58 LT
 STA 750+53.16 - STA 750+39.16 SL RT
 STA 273+16.00 - STA 273+17.08 LT
 STA 273+36.39 - STA 273+77.72 RT



VT 15 STA 272+65.00 =
 CHANNEL STA 500+75.00
 $\Delta = 115^\circ$ LT

VT 15 STA 272+12.00 =
 TH 55 STA 750+00.00
 $\Delta = 90^\circ$ LT

CURVE DATA
 $\Delta = 74^\circ 45' 53''$
 $D = 22^\circ 30' 00''$
 $R = 254.65'$
 $T = 194.57'$
 $L = 332.29'$
 $E = 65.82'$

BENCH MARK
 275+97.33, 40.7 FT LT
 RR SPIKE IN POLE
 ELEV. 1633.461

EXISTING BRIDGE DATA
 CONCRETE T-BEAM
 LENGTH = 43'-0"
 WIDTH = 22.3' CURB TO CURB
 BUILT IN 1933

LAYOUT
 SCALE 1" = 20'-0"
 20 0 20

PROJECT NAME: WALDEN
PROJECT NUMBER: BRF 030-3(5)
FILE NAME: s09b308_bdr.dgn
PROJECT LEADER: C. CARLSON
DESIGNED BY: H. SALLS
LAYOUT
PLOT DATE: 29-DEC-2014
DRAWN BY: R. PELLET
CHECKED BY: H. SALLS
SHEET 12 OF 56