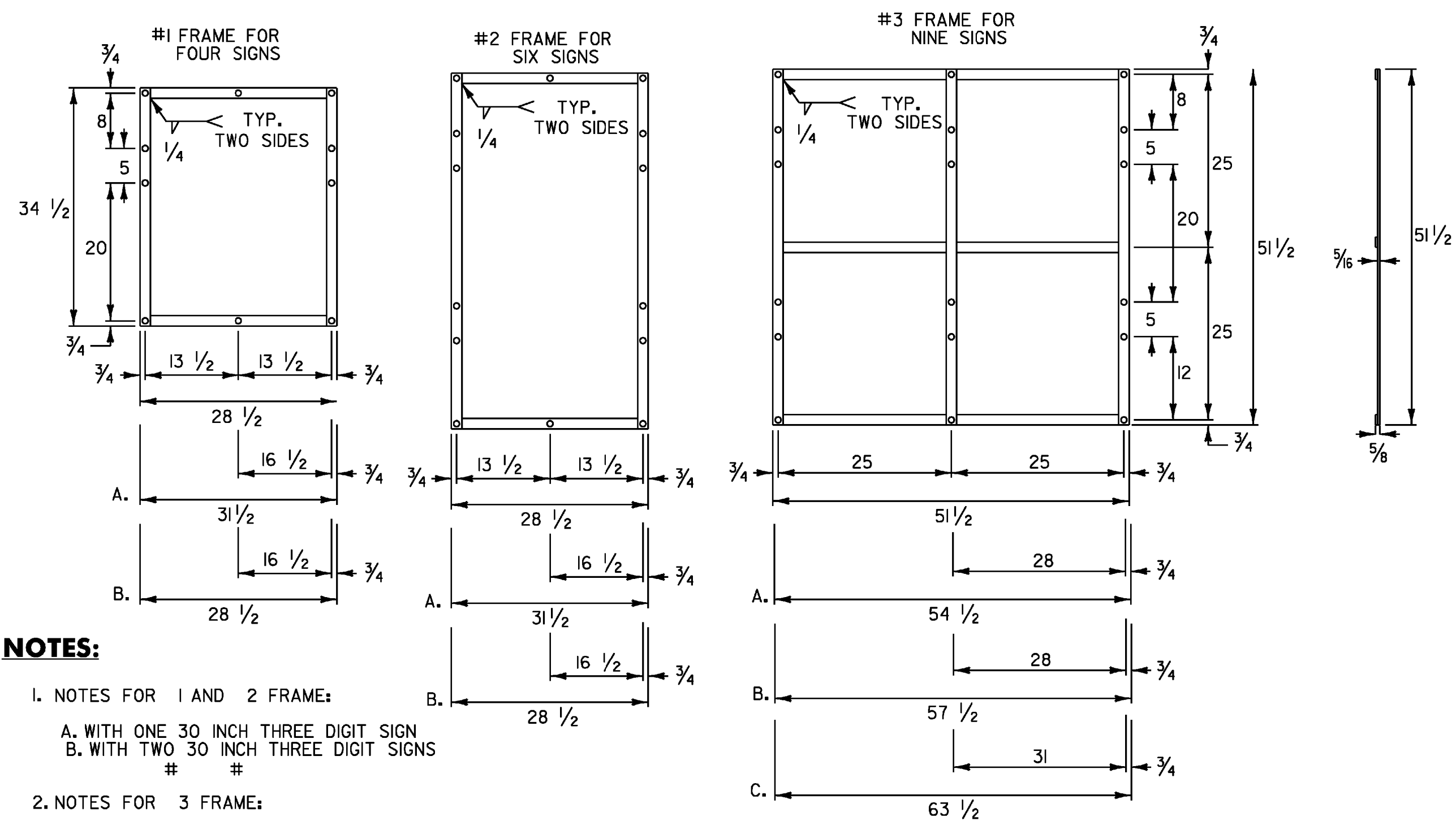


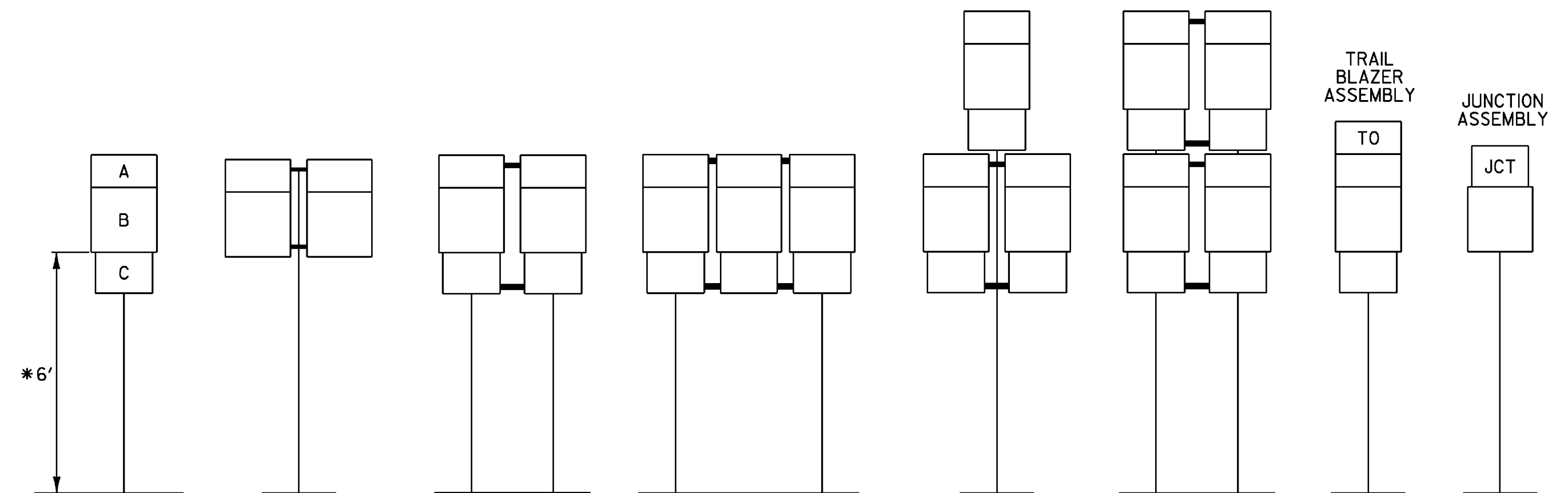
ROUTE MARKER ASSEMBLY FRAMES



NOTES:

- NOTES FOR 1 AND 2 FRAME:
 - WITH ONE 30 INCH THREE DIGIT SIGN
 - WITH TWO 30 INCH THREE DIGIT SIGNS
- NOTES FOR 3 FRAME:
 - WITH ONE 30 INCH THREE DIGIT SIGN IN AN OUTSIDE POSITION.
 - WITH ONE 30 INCH THREE DIGIT SIGN IN THE CENTER POSITION OR TWO SUCH SIGNS IN THE OUTSIDE POSITIONS.
 - WITH THREE 30 INCH THREE DIGIT SIGNS.
- ALL HOLES SHALL BE 7/16 INCH DIAMETER. FOR OTHER SIGN COMBINATIONS, THAN ABOVE, THE FRAME DIMENSIONS AND HOLE SPACING SHALL BE MODIFIED AS NECESSARY. THE FRAME SHALL BE PAINTED WITH ONE COAT OF PRIMER AND A SECOND COAT OF BLACK PAINT. THE PAINT SHALL BE OF THE TYPE USED ON EXTERIOR METAL SURFACES TO PREVENT METAL CORROSION.
- STANDARD FRAMES SHALL BE 5/16 INCH x 1/2 INCH WELDED A-36 STEEL.
- ALL DIMENSIONS SHOWN IN INCHES UNLESS OTHERWISE NOTED.

STANDARD MOUNTING OF ROUTE MARKER ASSEMBLIES



- A - CARDINAL DIRECTION MARKER
- B - ROUTE NUMBER
- C - ADVANCE TURN ARROW OR DIRECTIONAL ARROW

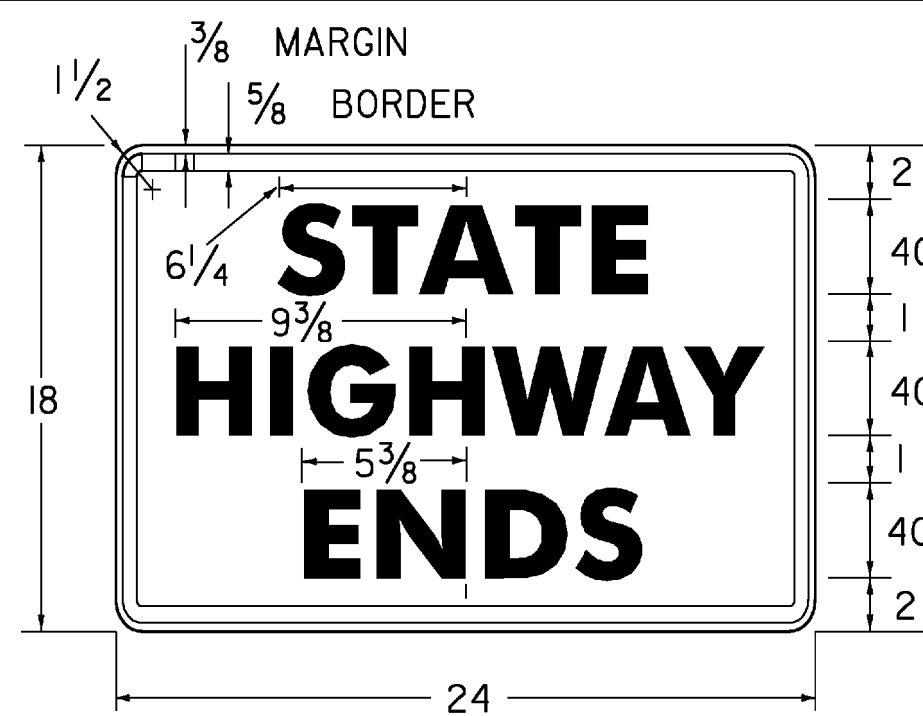
* WHERE PARKING OR PEDESTRIAN TRAFFIC WILL OCCUR IN THE IMMEDIATE VICINITY OF THESE SIGNS MINIMUM VERTICAL CLEARANCE SHALL BE INCREASED TO SEVEN FEET

INSTALLATION SEQUENCE:

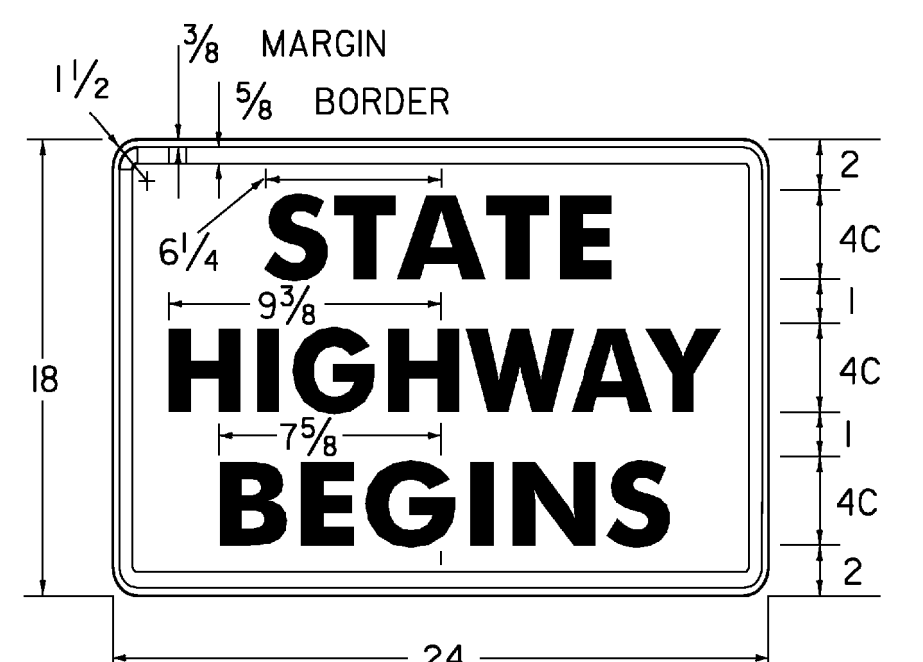
IN MULTIPLE HORIZONTAL MOUNTINGS PLACE A ROUTE MARKER ASSEMBLY INDICATING A LEFT TURN ON THE LEFT SIDE OF THE ASSEMBLY; RIGHT TURN ON THE RIGHT SIDE. FOR VERTICALLY STACKED MOUNTINGS PLACE THE STRAIGHT THROUGH MOVE INDICATION ON TOP, THE LEFT OR RIGHT TURNS AS APPROPRIATE BENEATH.

NOTES:

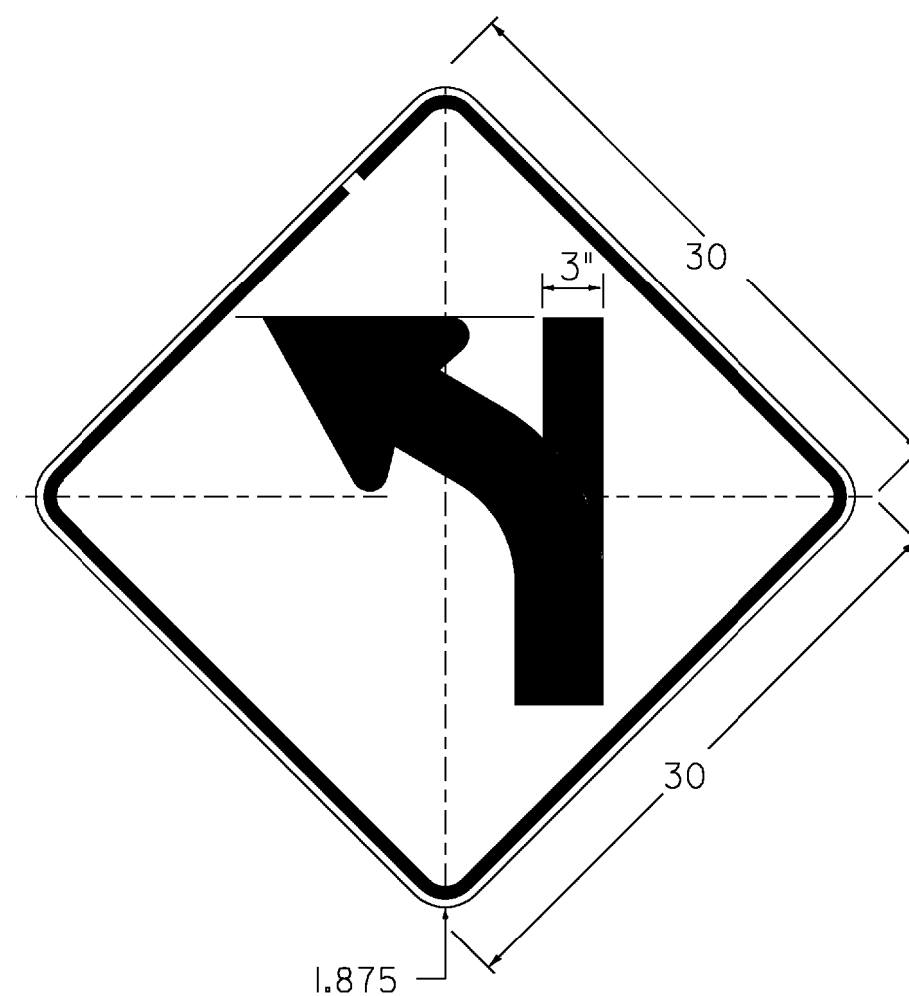
- ALL DIMENSIONS SHOWN IN INCHES UNLESS OTHERWISE NOTED.
- VERTICAL FRAME MEMBERS SHALL LINE UP WITH SIGN POST ON WHICH THEY ARE MOUNTED.



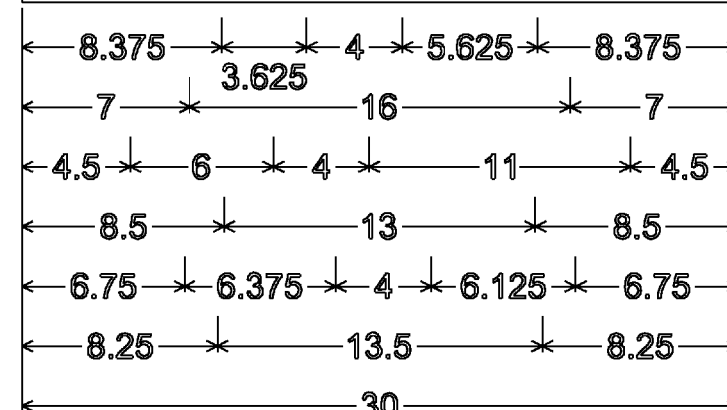
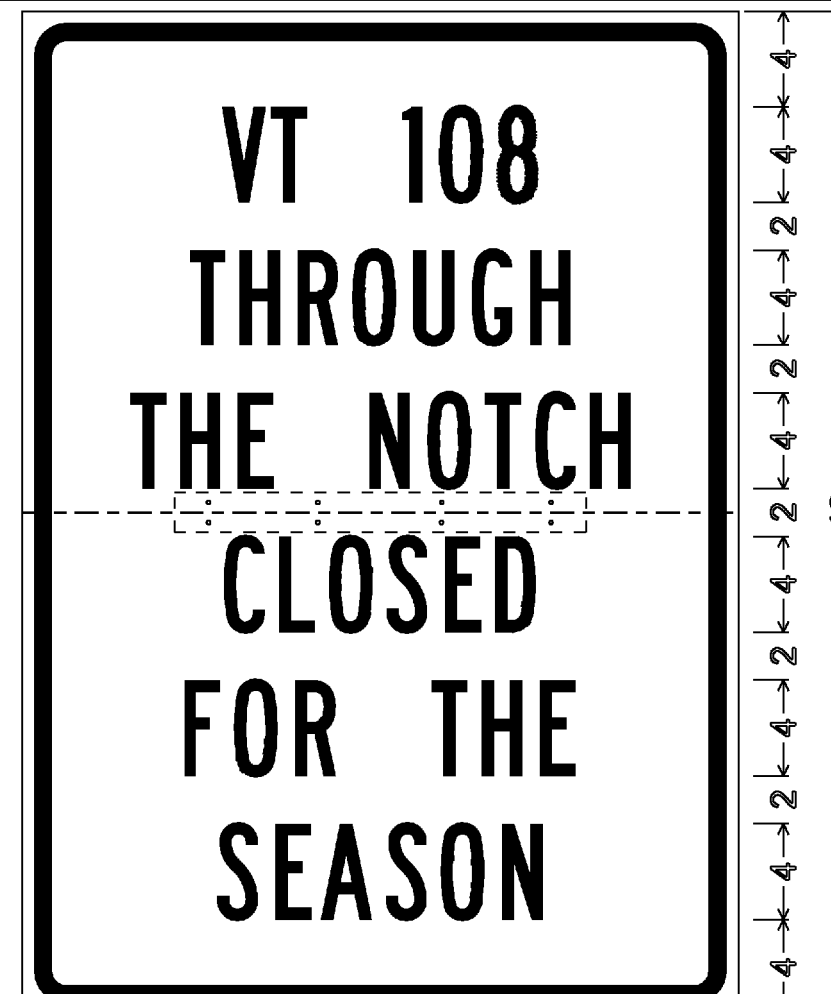
COLORS: LEGEND - BLACK
BACKGROUND - WHITE
VR-038



COLORS: LEGEND - BLACK
BACKGROUND - WHITE
VR-039

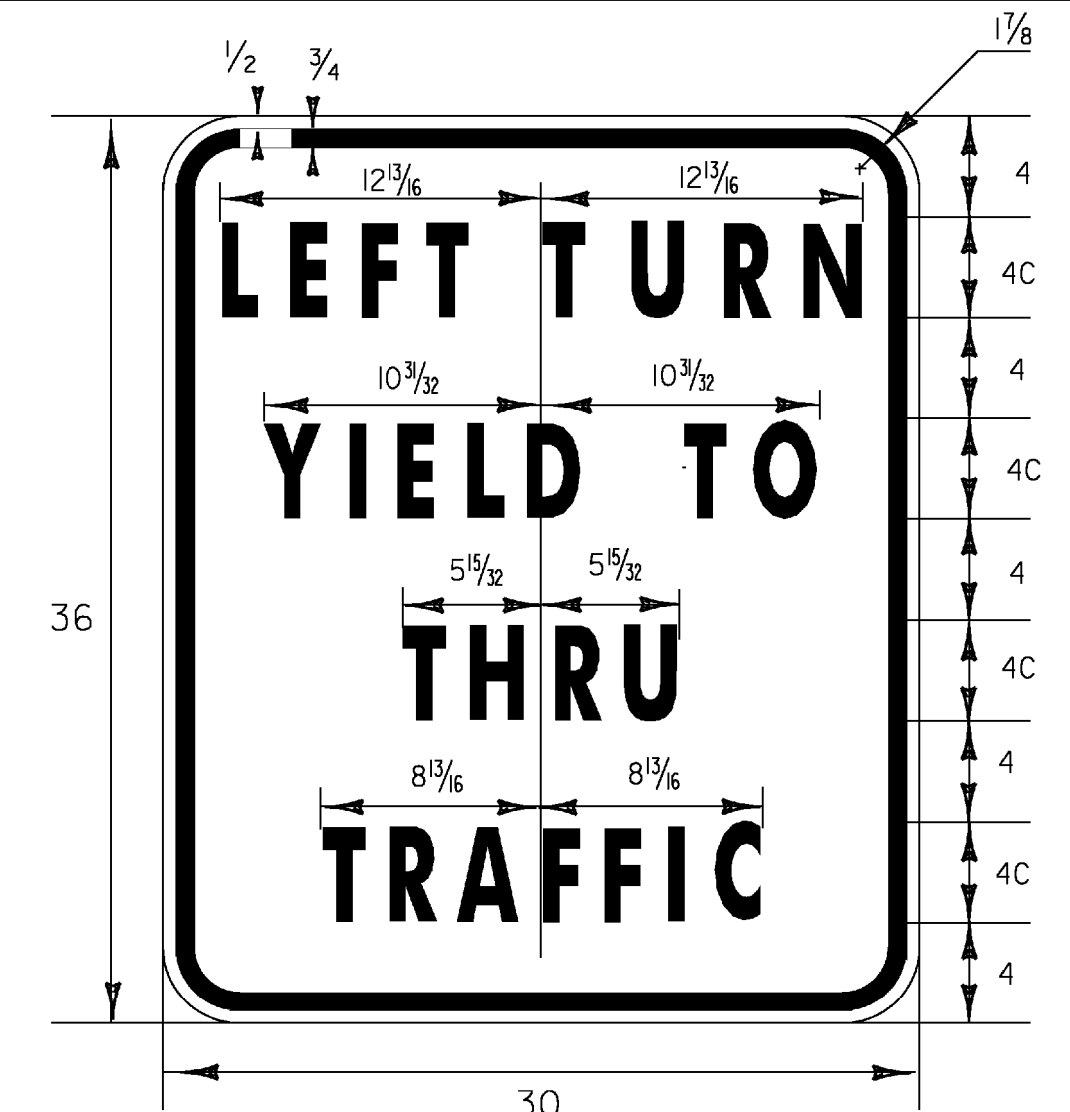
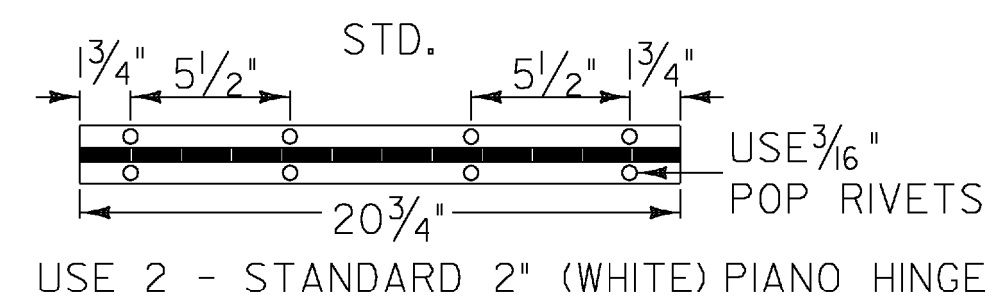


W1-2Mg L(R)
DIMENSIONS NOT SHOWN
FOR THIS DETAIL SHALL CONFORM
TO THE LATEST EDITION OF THE 2003 MUTCD
FOR SIGN DETAIL W1-2.
UNLESS OTHERWISE NOTED FOR THIS DETAIL



1.875" RADIUS, 0.75" BORDER, 0.50" INDENT
COLORS: LEGEND - BLACK
BACKGROUND - WHITE
TEXT STYLE: "VT 108" B; "THROUGH" B;
"THE NOTCH" B; "CLOSED" B;
"FOR THE" B; "SEASON" B

VR-474H



COLORS: LEGEND - BLACK
BACKGROUND - WHITE
VR-615

PROJECT NAME: MORETOWN - NEWPORT TOWN
PROJECT NUMBER: STPG SIGN (28)

FILE NAME: 09B060_TS.DGN
PROJECT LEADER: N. AVERY
DESIGNED BY: N. AVERY
GUIDE SIGN ASSEMBLY

PLOT DATE: 30-SEP-2009
DRAWN BY: N. AVERY
CHECKED BY: A. GAMBLE
SHEET 7 OF 166