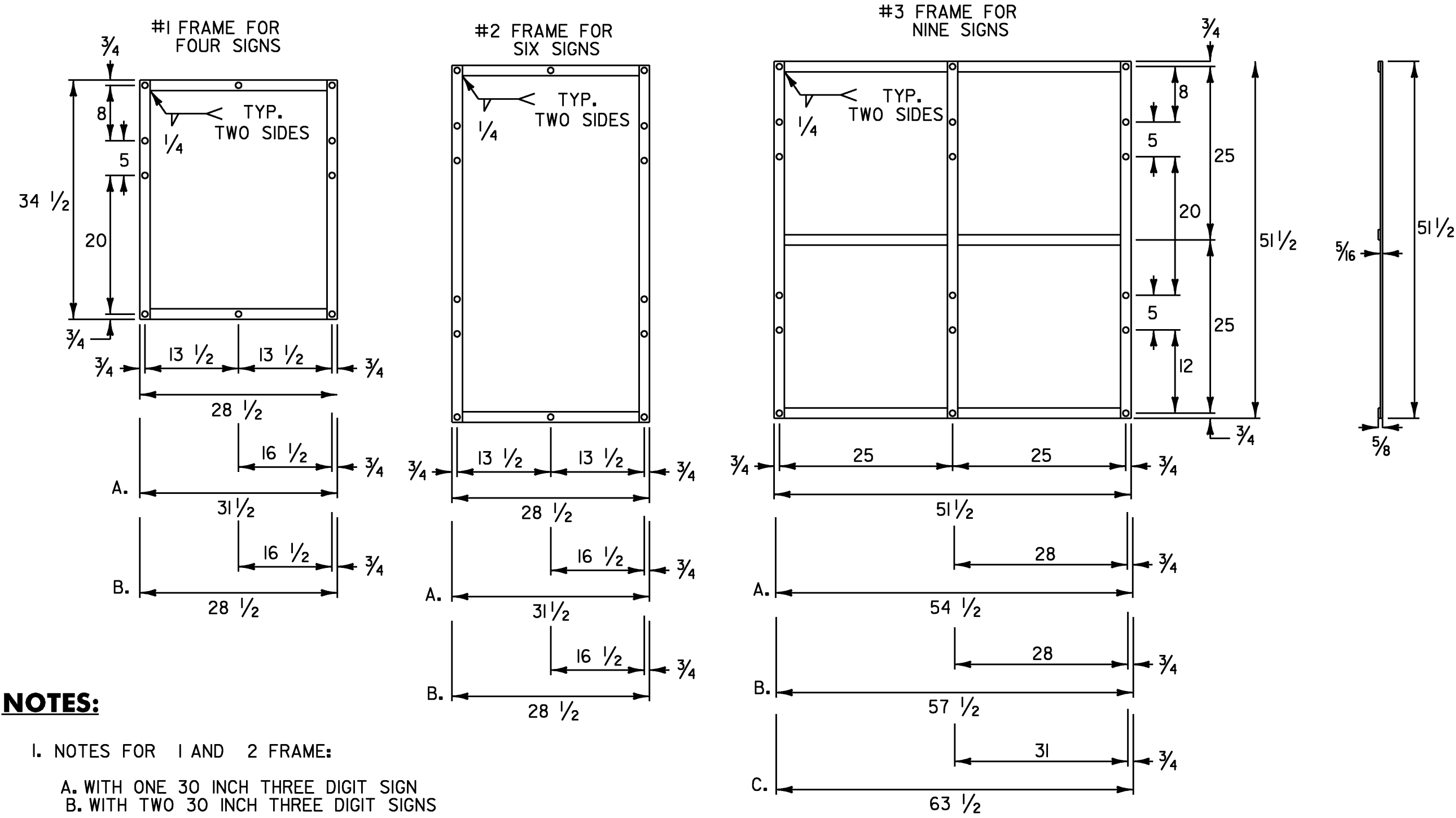


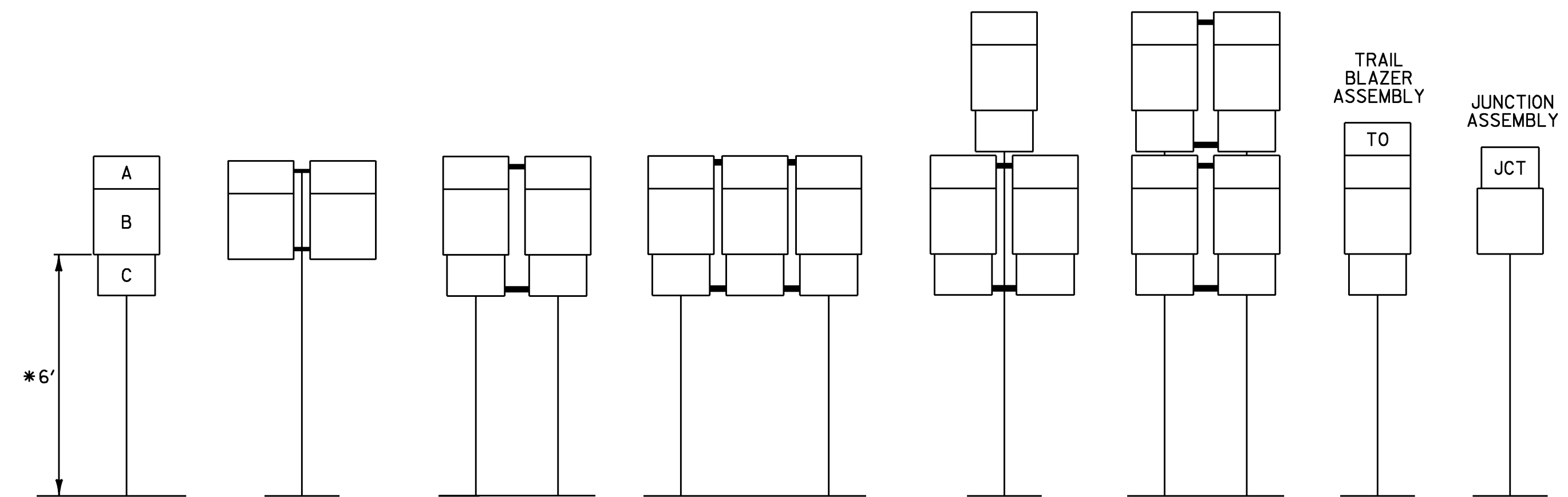
ROUTE MARKER ASSEMBLY FRAMES



NOTES:

- NOTES FOR 1 AND 2 FRAME:
 - WITH ONE 30 INCH THREE DIGIT SIGN
 - WITH TWO 30 INCH THREE DIGIT SIGNS
- NOTES FOR 3 FRAME:
 - WITH ONE 30 INCH THREE DIGIT SIGN IN AN OUTSIDE POSITION.
 - WITH ONE 30 INCH THREE DIGIT SIGN IN THE CENTER POSITION OR TWO SUCH SIGNS IN THE OUTSIDE POSITIONS.
 - WITH THREE 30 INCH THREE DIGIT SIGNS.
- ALL HOLES SHALL BE 1/8 INCH DIAMETER. FOR OTHER SIGN COMBINATIONS THAN ABOVE, THE FRAME DIMENSIONS AND HOLE SPACING SHALL BE MODIFIED AS NECESSARY. THE FRAME SHALL BE PAINTED WITH ONE COAT OF PRIMER AND A SECOND COAT OF BLACK PAINT. THE PAINT SHALL BE OF THE TYPE USED ON EXTERIOR METAL SURFACES TO PREVENT METAL CORROSION.
- STANDARD FRAMES SHALL BE 5/16 INCH x 1 1/2 INCH WELDED A-36 STEEL.
- ALL DIMENSIONS SHOWN IN INCHES UNLESS OTHERWISE NOTED.

STANDARD MOUNTING OF ROUTE MARKER ASSEMBLIES



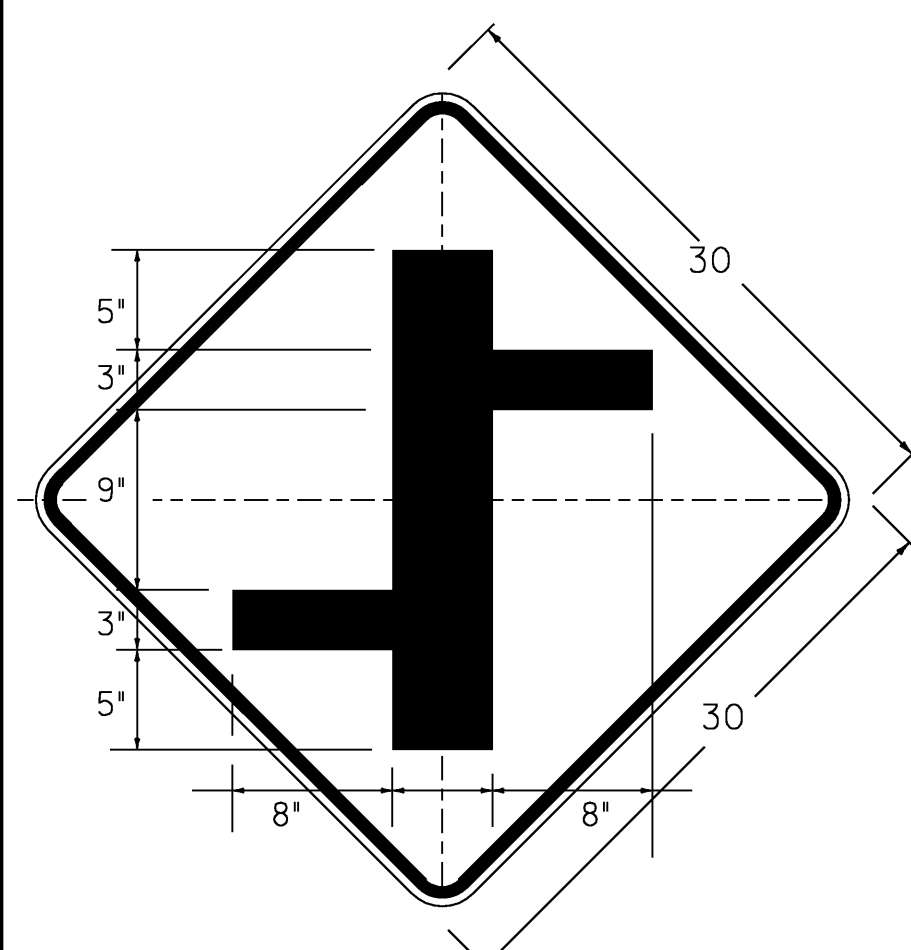
- A - CARDINAL DIRECTION MARKER
 B - ROUTE NUMBER
 C - ADVANCE TURN ARROW OR DIRECTIONAL ARROW
- * WHERE PARKING OR PEDESTRIAN TRAFFIC WILL OCCUR IN THE IMMEDIATE VICINITY OF THESE SIGNS, MINIMUM VERTICAL CLEARANCE SHALL BE INCREASED TO SEVEN FEET

INSTALLATION SEQUENCE:

IN MULTIPLE HORIZONTAL MOUNTINGS PLACE A ROUTE MARKER ASSEMBLY INDICATING A LEFT TURN ON THE LEFT SIDE OF THE ASSEMBLY; RIGHT TURN ON THE RIGHT SIDE. FOR VERTICALLY STACKED MOUNTINGS PLACE THE STRAIGHT THROUGH MOVE INDICATION ON TOP, THE LEFT OR RIGHT TURNS AS APPROPRIATE BENEATH.

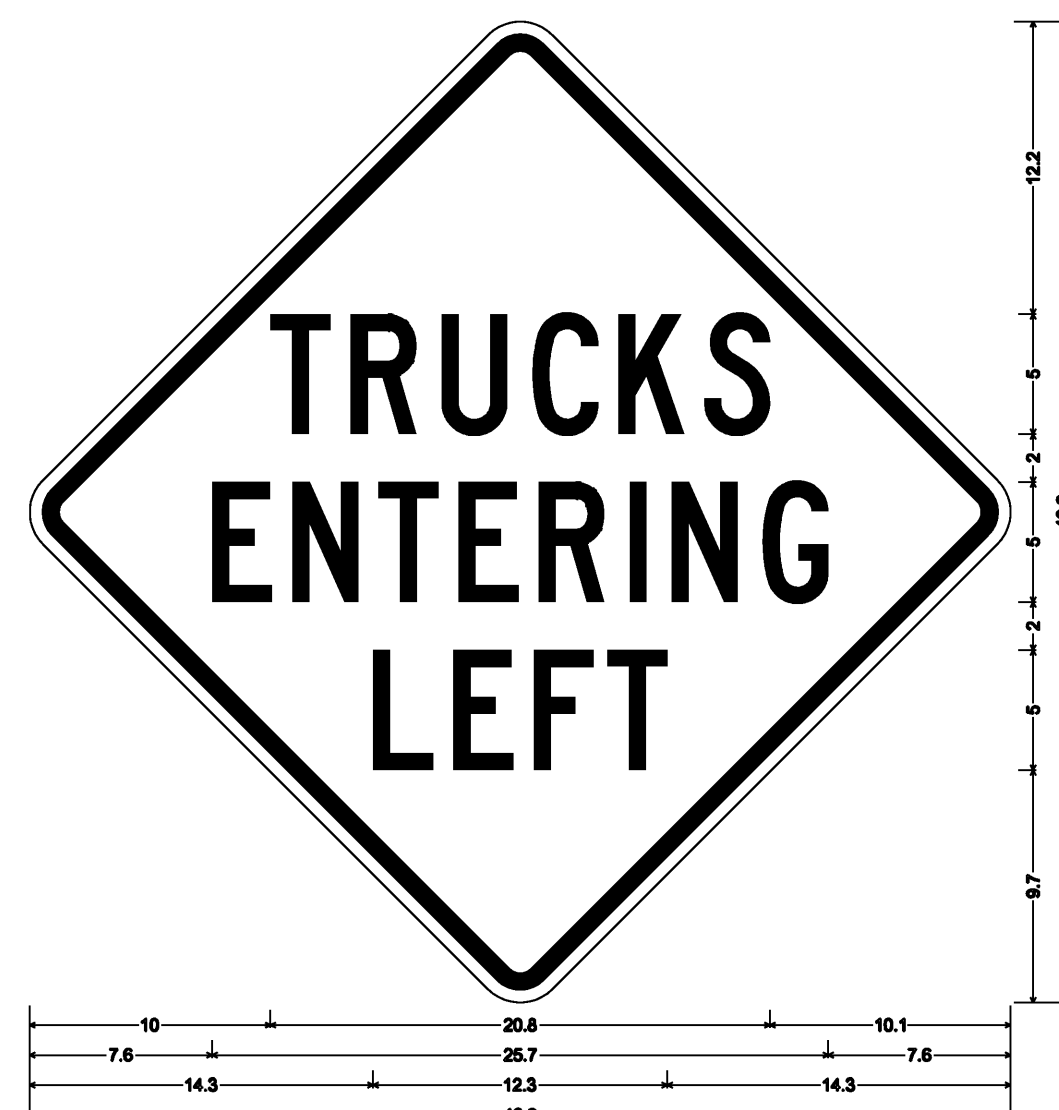
NOTES:

- ALL DIMENSIONS SHOWN IN INCHES UNLESS OTHERWISE NOTED.
- VERTICAL FRAME MEMBERS SHALL LINE UP WITH SIGN POST ON WHICH THEY ARE MOUNTED.



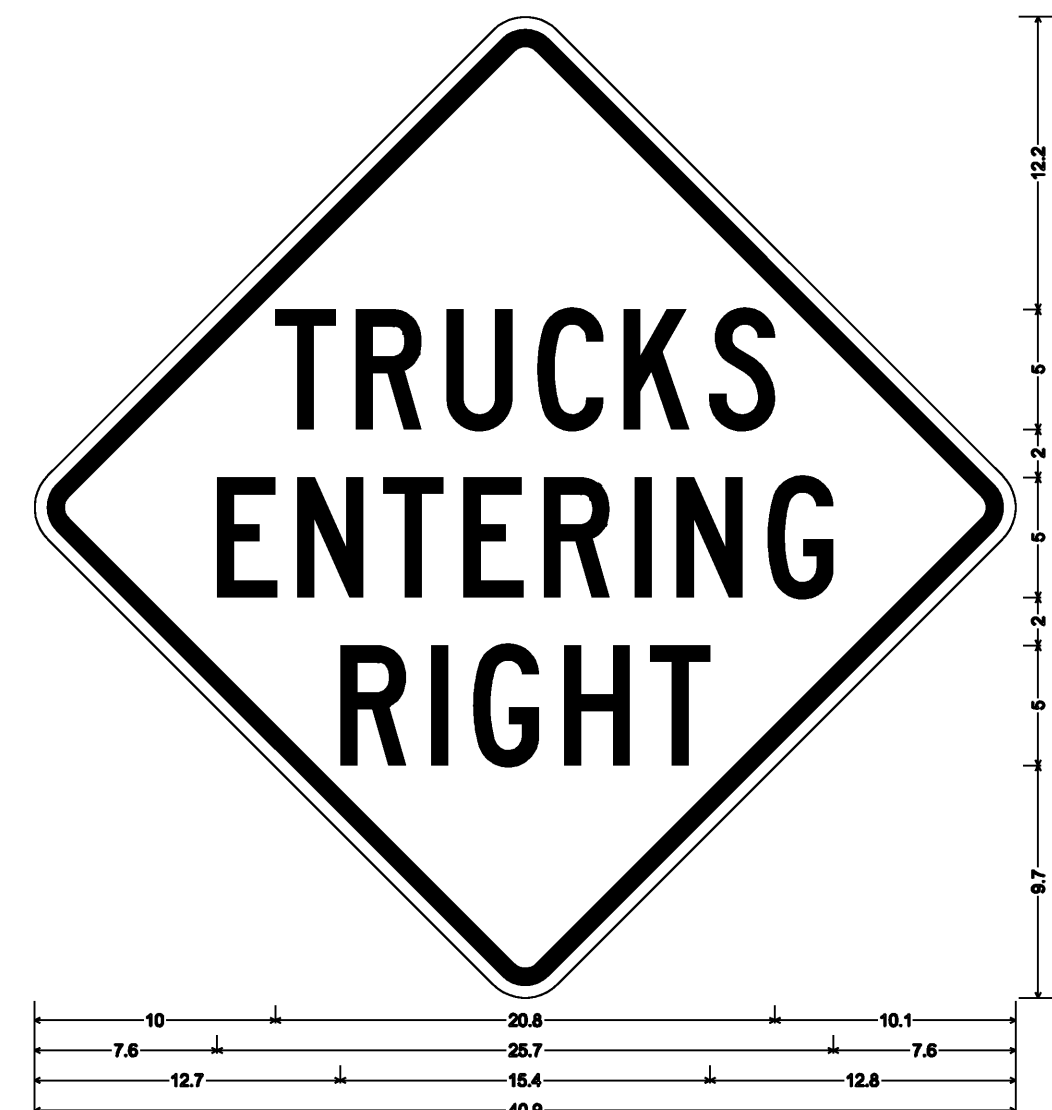
W2-1Me

DIMENSIONS NOT SHOWN FOR THIS DETAIL SHALL CONFORM TO THE LATEST EDITION OF THE 2003 MUTCD FOR SIGN DETAIL W2-1. UNLESS OTHERWISE NOTED FOR THIS DETAIL.



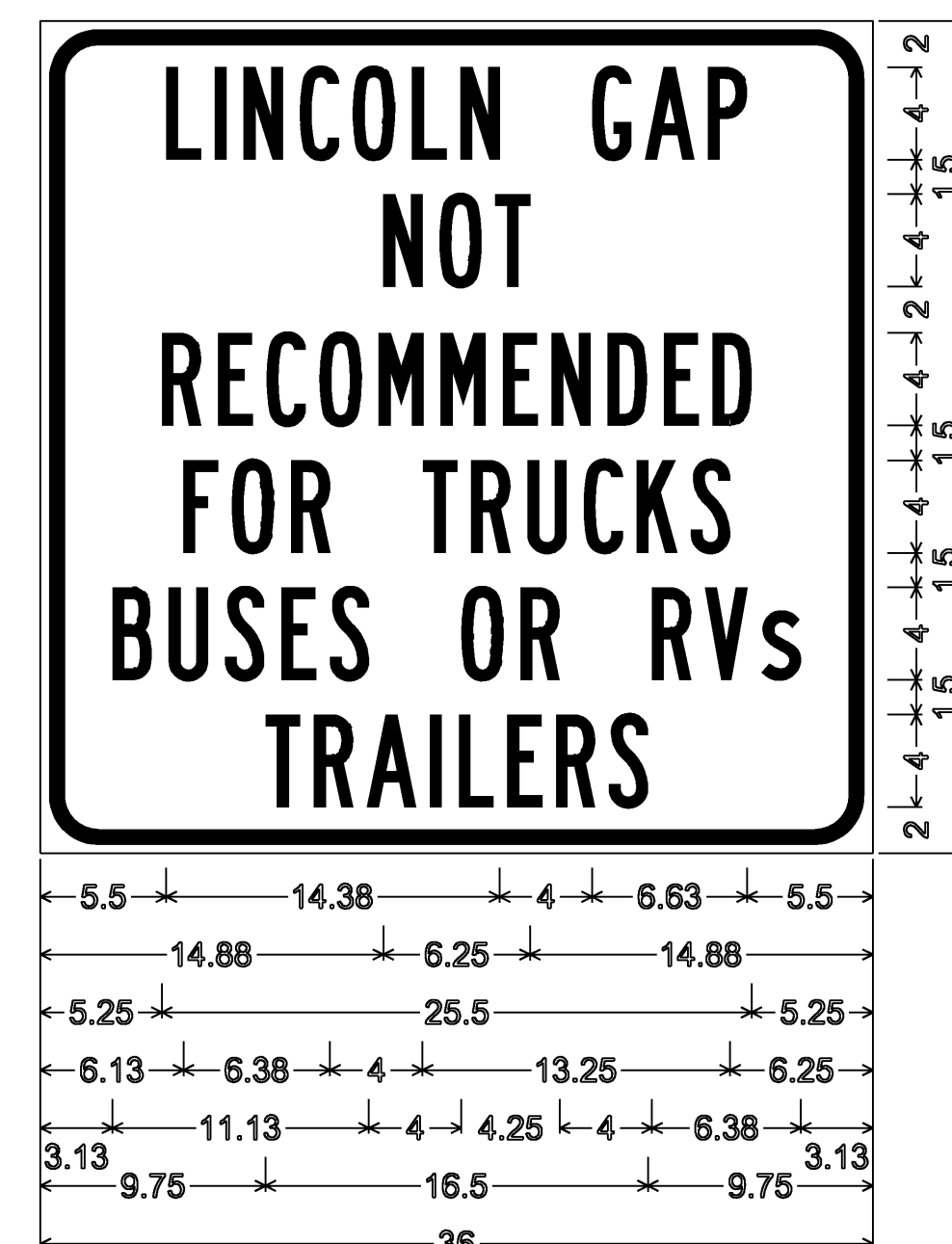
VW-084

30" SQUARE SIGN FACE
 1.875" RADIUS, 0.75" BORDER, 0.50" INDENT
 COLORS: LEGEND - BLACK
 BACKGROUND - YELLOW
 TEXT STYLE: C



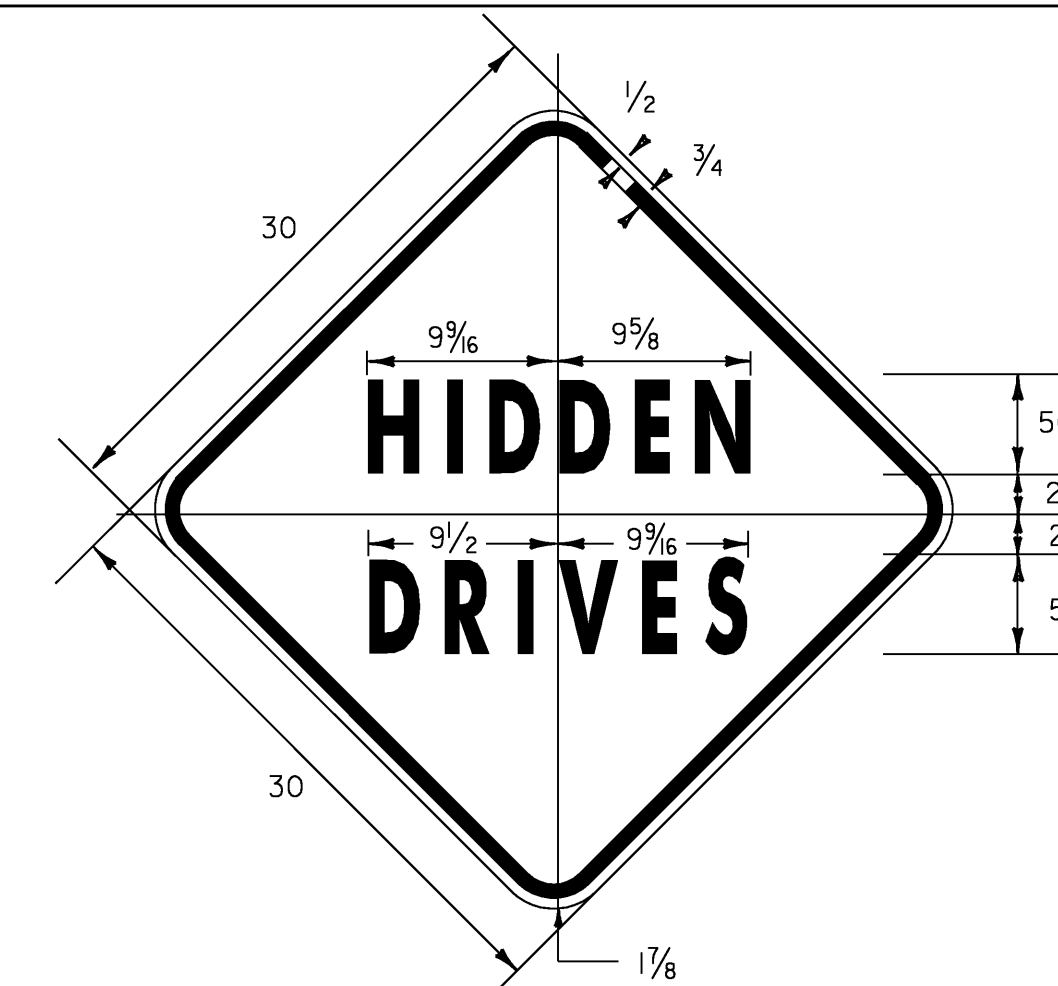
VW-081

30" SQUARE SIGN FACE
 1.875" RADIUS, 0.75" BORDER, 0.50" INDENT
 COLORS: LEGEND - BLACK
 BACKGROUND - YELLOW
 TEXT STYLE: C



VW-399p

2.5" RADIUS, 0.625" BORDER, 0.375" INDENT
 COLORS: LEGEND - BLACK
 BACKGROUND - YELLOW
 TEXT STYLE: B



VW-060

COLORS: LEGEND - BLACK
 BACKGROUND - YELLOW

PROJECT NAME: LUDLOW - WAITSFIELD

PROJECT NUMBER: STPG SIGN (27)

FILE NAME: 09B058_TS.DGN

PROJECT LEADER: N. AVERY

DESIGNED BY: N. AVERY

GUIDE SIGN ASSEMBLY

PLOT DATE: 16-SEP-2009

DRAWN BY: N. AVERY

CHECKED BY: A. GAMBLE

SHEET 7 OF 204