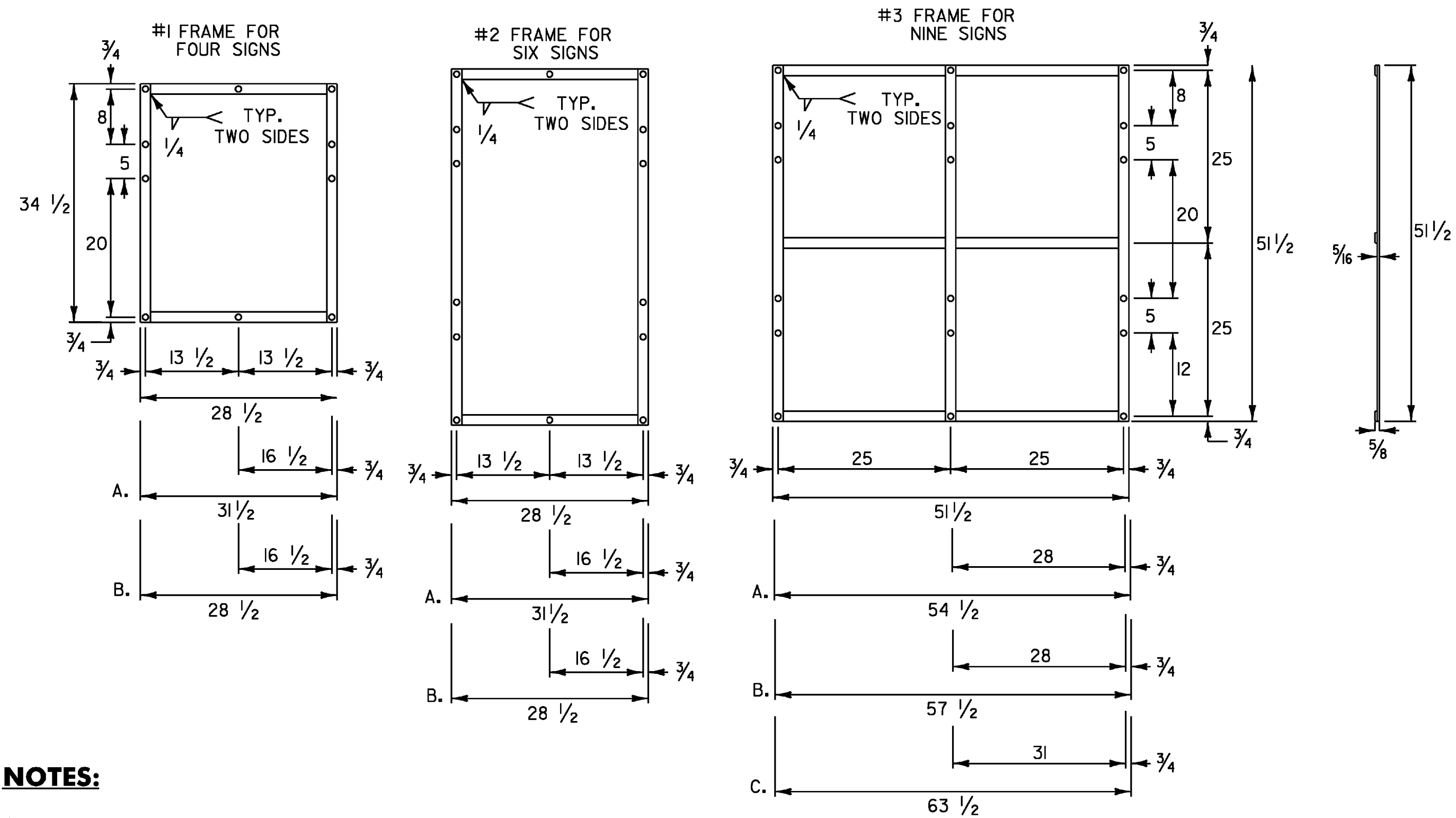


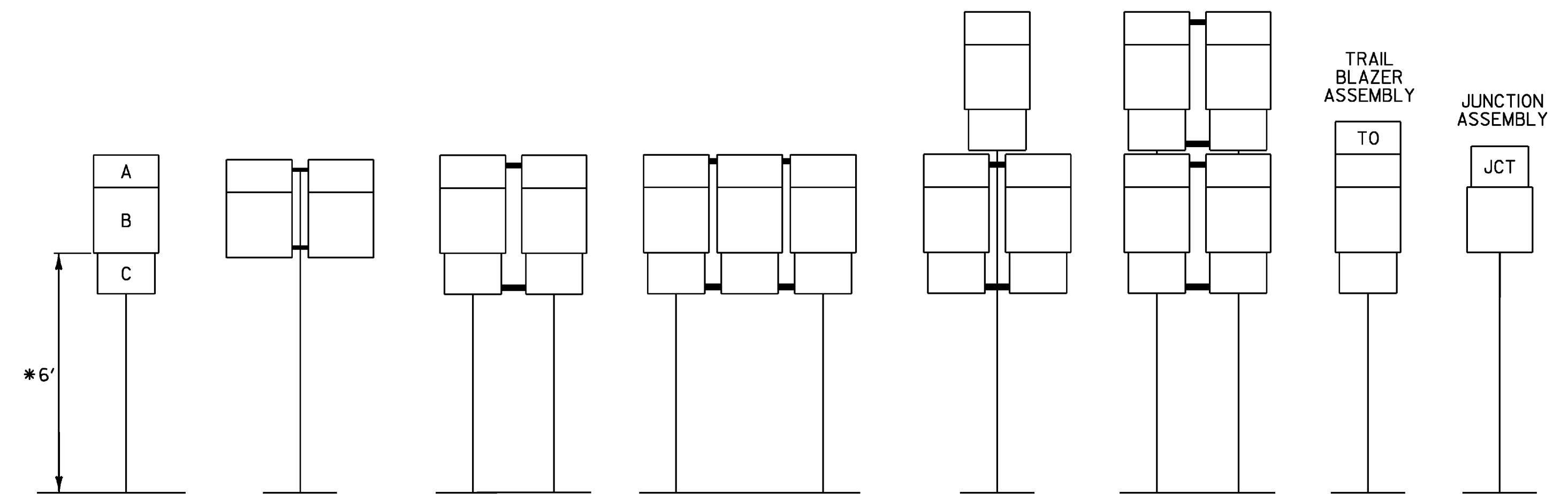
**ROUTE MARKER ASSEMBLY FRAMES**



**NOTES:**

1. NOTES FOR #1 AND #2 FRAME:
  - A. WITH ONE 30 INCH THREE DIGIT SIGN
  - B. WITH TWO 30 INCH THREE DIGIT SIGNS
2. NOTES FOR #3 FRAME:
  - A. WITH ONE 30 INCH THREE DIGIT SIGN IN AN OUTSIDE POSITION.
  - B. WITH ONE 30 INCH THREE DIGIT SIGN IN THE CENTER POSITION OR TWO SUCH SIGNS IN THE OUTSIDE POSITIONS.
  - C. WITH THREE 30 INCH THREE DIGIT SIGNS.
3. ALL HOLES SHALL BE 5/16 INCH DIAMETER. FOR OTHER SIGN COMBINATIONS, THAN ABOVE, THE FRAME DIMENSIONS AND HOLE SPACING SHALL BE MODIFIED AS NECESSARY. THE FRAME SHALL BE PAINTED WITH ONE COAT OF PRIMER AND A SECOND COAT OF BLACK PAINT. THE PAINT SHALL BE OF THE TYPE USED ON EXTERIOR METAL SURFACES TO PREVENT METAL CORROSION.
4. STANDARD FRAMES SHALL BE 5/16 INCH x 1 1/2 INCH WELDED A-36 STEEL.
5. ALL DIMENSIONS SHOWN IN INCHES EXCEPT WHERE NOTED.

**STANDARD MOUNTING OF ROUTE MARKER ASSEMBLIES**



- A - CARDINAL DIRECTION MARKER  
 B - ROUTE NUMBER  
 C - ADVANCE TURN ARROW OR DIRECTIONAL ARROW
- \* WHERE PARKING OR PEDESTRIAN TRAFFIC WILL OCCUR IN THE IMMEDIATE VICINITY OF THESE SIGNS MINIMUM VERTICAL CLEARANCE SHALL BE INCREASED TO SEVEN FEET

INSTALLATION SEQUENCE:  
 IN MULTIPLE HORIZONTAL MOUNTINGS PLACE A ROUTE MARKER ASSEMBLY INDICATING A LEFT TURN ON THE LEFT SIDE OF THE ASSEMBLY; RIGHT TURN ON THE RIGHT SIDE. FOR VERTICALLY STACKED MOUNTINGS PLACE THE STRAIGHT THROUGH MOVE INDICATION ON TOP, THE LEFT OR RIGHT TURNS AS APPROPRIATE BENEATH.

**NOTES:**

1. ALL DIMENSIONS SHOWN IN INCHES EXCEPT WHERE NOTED.
2. VERTICAL FRAME MEMBERS SHALL LINE UP WITH SIGN POST ON WHICH THEY ARE MOUNTED.

PROJECT NAME:	FAIR HAVEN - PANTON
PROJECT NUMBER:	STPG SIGN (24)
FILE NAME:	O9B030_TS.DGN
PROJECT LEADER:	N. AVERY
DESIGNED BY:	N. AVERY
GUIDE SIGN ASSEMBLY	
PLOT DATE:	30-APR-2009
DRAWN BY:	N. AVERY
CHECKED BY:	A. GAMBLE
SHEET 7	OF 17