

INDEX OF SHEETS

1	TITLE SHEET
2	GENERAL NOTES
3	QUANTITY SHEET
4	COUNTY/ TOWN LINE DESIGN
5-6	SIGN DETAILS
7	GUIDE SIGN ASSEMBLY
8-27	FAIR HAVEN TRAFFIC SIGN SUMMARY SHEETS 1-20
28-30	WEST HAVEN TRAFFIC SIGN SUMMARY SHEETS 1-3
31-43	BENSON TRAFFIC SIGN SUMMARY SHEETS 1-13
44-54	ORWELL TRAFFIC SIGN SUMMARY SHEETS 1-II
55-73	SHOREHAM TRAFFIC SIGN SUMMARY SHEETS 1-19
74-97	BRIDPORT TRAFFIC SIGN SUMMARY SHEETS 1-24
98-111	ADDISON TRAFFIC SIGN SUMMARY SHEETS 1-14
112-114	PANTON TRAFFIC SIGN SUMMARY SHEETS 1-3
115	TOWN TOTAL SIGN SUMMARY SHEET
116-117	TRAFFIC CONTROL SHEETS

STANDARDS

E-120	STANDARD SIGN PLACEMENT EXPRESSWAY AND FREEWAY	08/08/1995
E-121	STANDARD SIGN PLACEMENT CONVENTIONAL ROAD	08/08/1995
E-123	GUIDE SIGN PLACEMENT	03/16/2004
E-127	ROUTE MARKINGS AT RURAL INTERSECTIONS	08/08/1995
E-128A	VILLAGE SIGNS A-M	08/08/1995
E-128B	VILLAGE SIGNS N-W	08/08/1995
E-136B	STATE ROUTE MARKER SIGN DETAILS	08/08/1995
E-136C	STATE NUMBER TOWN HIGHWAY SIGN DETAILS	08/08/1995
E-138	MILEMARKER DETAILS STATE AND TOWN HIGHWAYS	05/30/2003
E-141	REGULATORY SIGN DETAILS	09/20/1995
E-144	REGULATORY SIGN DETAILS	03/29/1999
E-145A	REGULATORY SIGN DETAILS LANE USE CONTROL SIGNS	12/23/1994
E-145B	REGULATORY SIGN DETAILS LANE USE CONTROL SIGNS	12/23/1994
E-153	WARNING SIGN DETAILS	05/01/2004
E-154	WARNING SIGN DETAILS	05/01/2004
E-164	SQUARE STEEL POSTS	05/20/1999

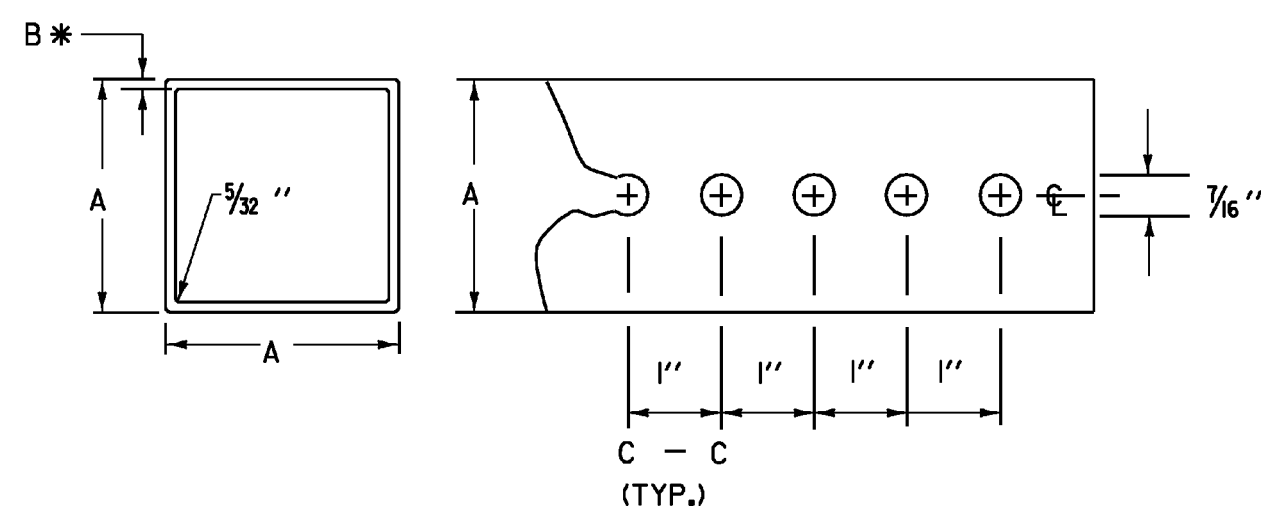
GENERAL NOTES

- ALL MATERIALS AND CONSTRUCTION SHALL CONFORM TO THE ENGINEER. ALL NEW SIGNS SHALL BE IN ACCORDANCE WITH THESE PLANS, THE CURRENT MANUAL ON UNIFORM TRAFFIC CONTROL DEVICES (MUTCD), THE STANDARD HIGHWAY SIGN BOOK (SHS) PUBLISHED BY THE FEDERAL HIGHWAY ADMINISTRATION (FHWA), AND APPLICABLE VTRANS E-SERIES STANDARDS OR AS DIRECTED BY THE ENGINEER. SIGN LOCATIONS AS SHOWN ON THE PLANS ARE APPROXIMATE. EXACT LOCATIONS TO BE DETERMINED BY THE ENGINEER IN THE FIELD.
- ALL SIGNS WITHIN THE PROJECT LIMITS ARE TO BE REPLACED UNLESS OTHERWISE NOTED OR AS DIRECTED BY THE RESIDENT ENGINEER. ALL NEW SIGNS SHALL BE IN ACCORDANCE WITH THESE PLANS, THE CURRENT MANUAL ON UNIFORM TRAFFIC CONTROL DEVICES (2003 MUTCD), THE STANDARD HIGHWAY SIGN BOOK (SHS) PUBLISHED BY THE FEDERAL HIGHWAY ADMINISTRATION (FHWA), AND APPLICABLE VTRANS E-SERIES STANDARDS OR AS DIRECTED BY THE ENGINEER. SIGN LOCATIONS AS SHOWN ON THE PLANS ARE APPROXIMATE. EXACT LOCATIONS TO BE DETERMINED BY THE ENGINEER IN THE FIELD.
- THE CONTRACTOR SHALL BE RESPONSIBLE FOR REPAIRING ANY DAMAGE TO PRIVATE OR PUBLIC PROPERTY CAUSED BY THE CONTRACTOR, AT HIS OR HER EXPENSE.
- ALL FORMED 2" SQUARE STEEL SHAPED POSTS SHALL BE FABRICATED WITH 12 GAUGE STEEL WITH A MINIMUM YIELD OF 55 KSI. NO FLANGE CHANNEL SUBSTITUTIONS WILL BE ALLOWED. SEE POST SELECTION CHART BELOW.
- ANY MILE MARKER PLAQUE WITHIN THE PROJECT LIMITS SHALL BE RETAINED UNLESS OTHERWISE NOTED.
- ALL ADVANCE STREET NAME PLAQUE SIGNS (W16-8 AND W16-8a) USED TO IDENTIFY THE NAME OF THE INTERSECTING STREETS SHALL HAVE INITIAL UPPERCASE LETTERS USED IN CONJUNCTION WITH LOWERCASE LETTERS (IE. Main St).
- EXISTING MILEMARKERS ON STATE HIGHWAYS ARE TO BE SALVAGED AND INSTALLED ON POSTS FOR NEW STOP SIGNS OR RETAINED IF ON SEPARATE POSTS OR AS DIRECTED BY THE ENGINEER. NOT ALL MILE MARKER LOCATIONS ARE DEPICTED ON THE PLANS. PAYMENT FOR ATTACHING TO NEW POSTS IS INCIDENTAL TO OTHER CONTRACT PAY ITEMS.
- EXISTING STREET NAME SIGNS ATTACHED TO SIGN POSTS TO BE REMOVED AND SALVAGED ONTO THE NEW POST. AN ESTIMATED QUANTITY HAS BEEN ADDED TO PAY ITEM NUMBER 675.60 ERECTING SALVAGED SIGNS FOR THE WORK TO BE COMPLETED.
- NY FERRY CLOSED SIGNS ARE TO BE FABRICATED FOR THIS PROJECT AND DELIVERED TO THE COLCHESTER TRAFFIC SHOP, AGENCY OF TRANSPORTATION DISTRICT 5, FORT ETHAN ALLEN, COLCHESTER, VERMONT 05446, (802) 655-1580 AND PAID UNDER PAY ITEM 675.20 TRAFFIC SIGN, TYPE A.

CLASS I SECTIONS OF HIGHWAY TO BE EXCLUDED FROM THIS PROJECT

TOWN	BEGIN MM	END MM	DISTANCE
VERGENNES	0.000	2.188	2.188
FAIR HAVEN	1.088	2.234	1.146

TOTAL CLASS I MILEAGE 3.334



NOTE :

THE POSTS SHALL BE CAREFULLY FORMED OF STEEL WITH A MINIMUM YIELD OF 55,000 PSI, INTO A SIZE AND SHAPE WITH CORNERS INDUCTION WELDED IN SUCH A MANNER THAT NEITHER FLASH NOR WELD SHALL INTERFERE WITH THE TELESCOPING PROPERTIES, NOR DAMAGE THE GALVANIZING.

*THE WALL THICKNESS TOLERANCES SHALL BE +.005" AND -.010" FOR THE 12 GAUGE.

*THE WALL THICKNESS TOLERANCES SHALL BE +.002" AND -.008" FOR THE 14 GAUGE.

DIMENSION DETAILS AND POST SELECTION CHART

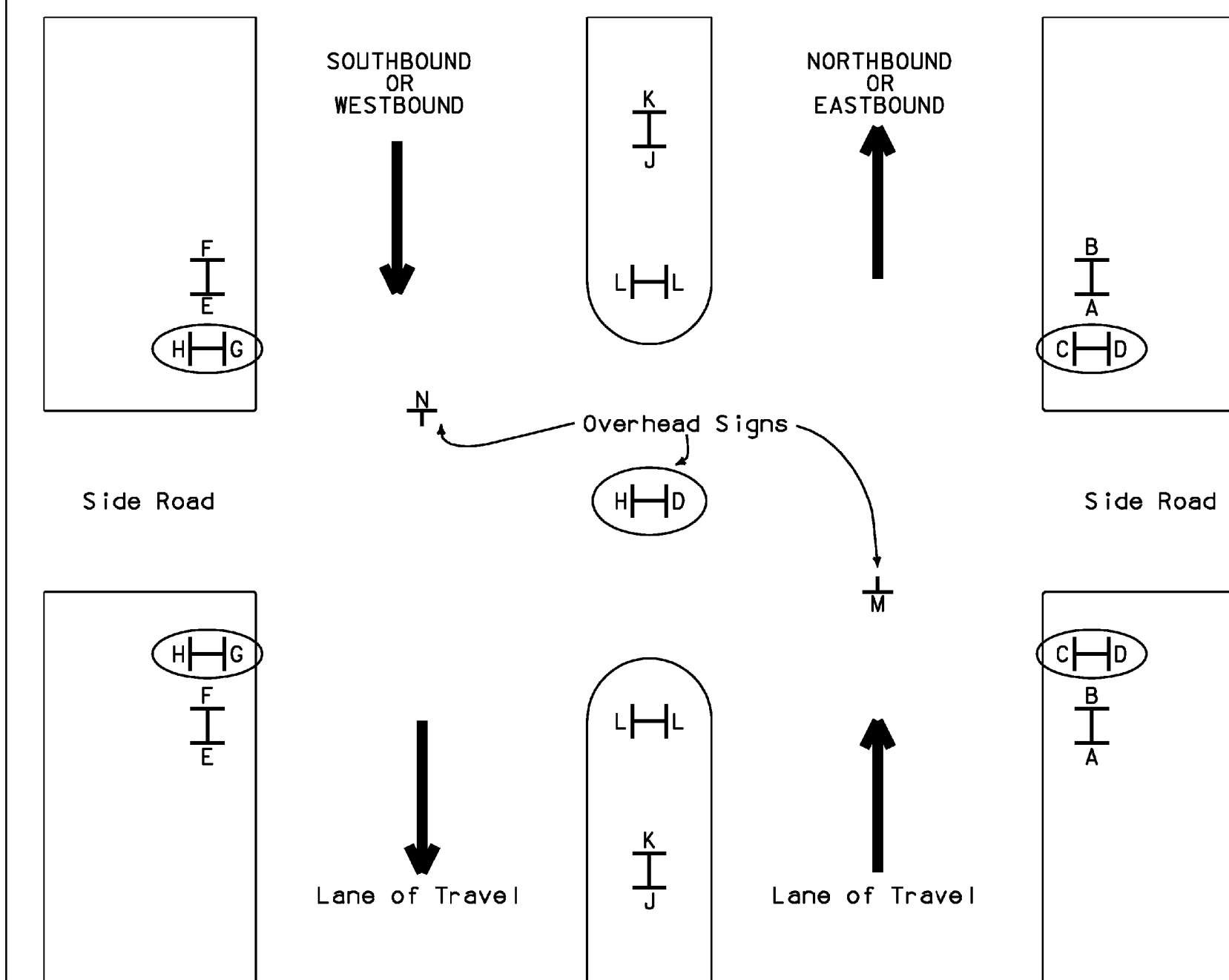
POST SELECTION CHART								
SIGN AREA (FT ²) X H (FT) ≤ SV (SELECTION VALUE)								
POST SIZE	DIMENSIONS			SECTION MODULUS IN ³	ONE POST S _V	TWO POST S _V	THREE POST S _V	NUMBER PERMITTED IN 8' PATH
	LBS/FT.	A	•B GAUGE					
1.88	1 3/4"	.083	14	0.230	47	94	141	TWO
2.42	2"	.105	12	0.381	77	154	231	TWO
3.35	2 1/2"	.105	12	0.642	130	260	390	ONE

DESIGN CRITERIA:

WIND SPEED = 70 MPH (10 -YEAR MEAN RECURRENCE INTERVAL)
 WIND PRESSURE = 19 PSF
 STEEL MINIMUM YIELD = 55,000 PSI
 ALLOWABLE STRESS = (1.4) 0.60 FY

THE TRAFFIC SIGN LOCATION CODES ARE TO BE USED INCONJUNCTION WITH THE SIGN SUMMARY SHEETS TO ESTABLISH PROPER SIGN INSTALLATION IN THE FILED.

Traffic Sign Location Codes



NOTE: If side road is a state highway, circled signs should be on the side road's inventory

PROJECT NAME:	FAIR HAVEN - PANTON
PROJECT NUMBER:	STPG SIGN (24)
FILE NAME:	O9B030_TS.DGN
PROJECT LEADER:	N. AVERY
DESIGNED BY:	N. AVERY
GENREAL NOTES	
PLOT DATE:	30-APR-2009
DRAWN BY:	N. AVERY
CHECKED BY:	A. GAMBLE
SHEET	2 OF 17