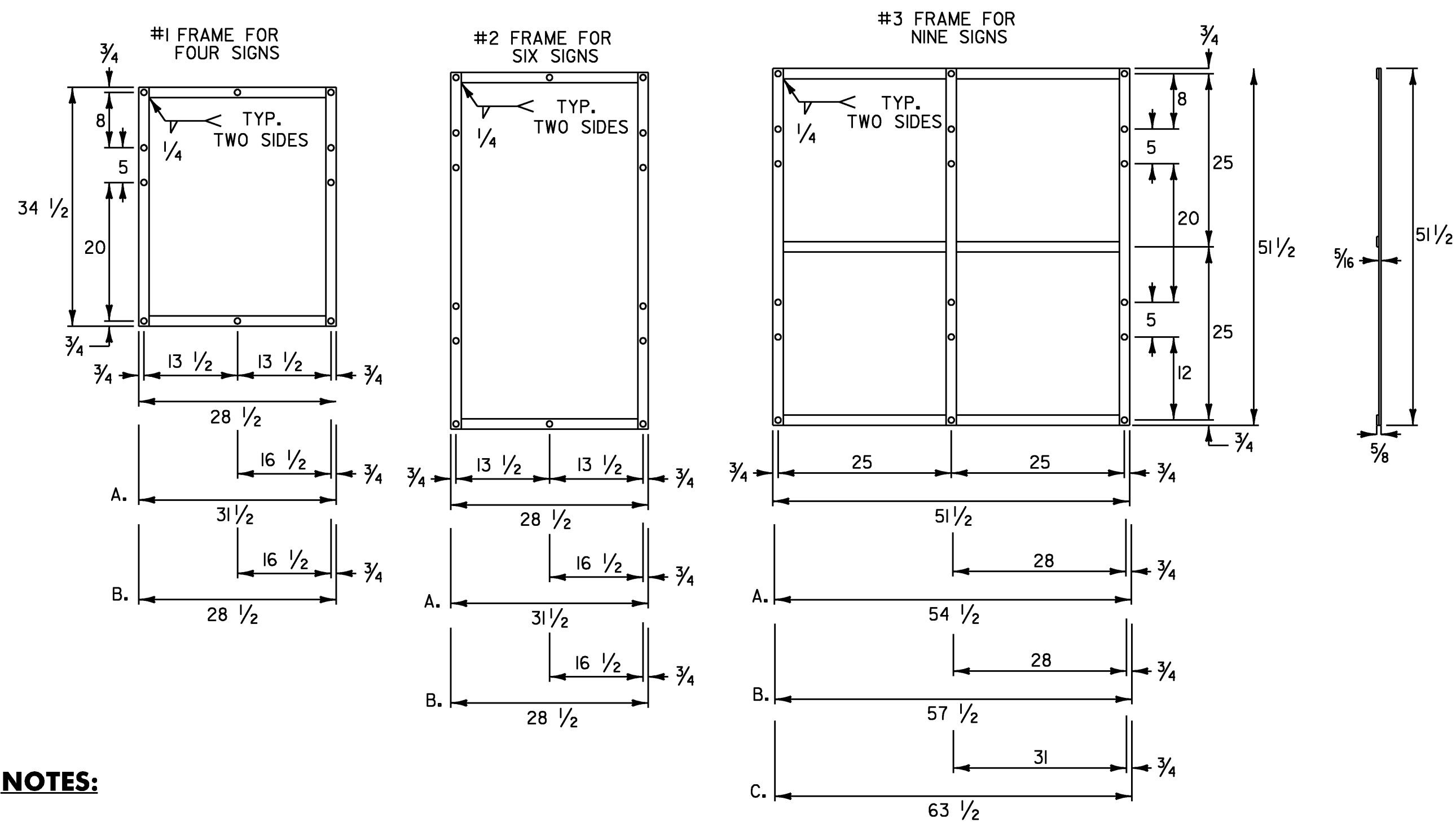


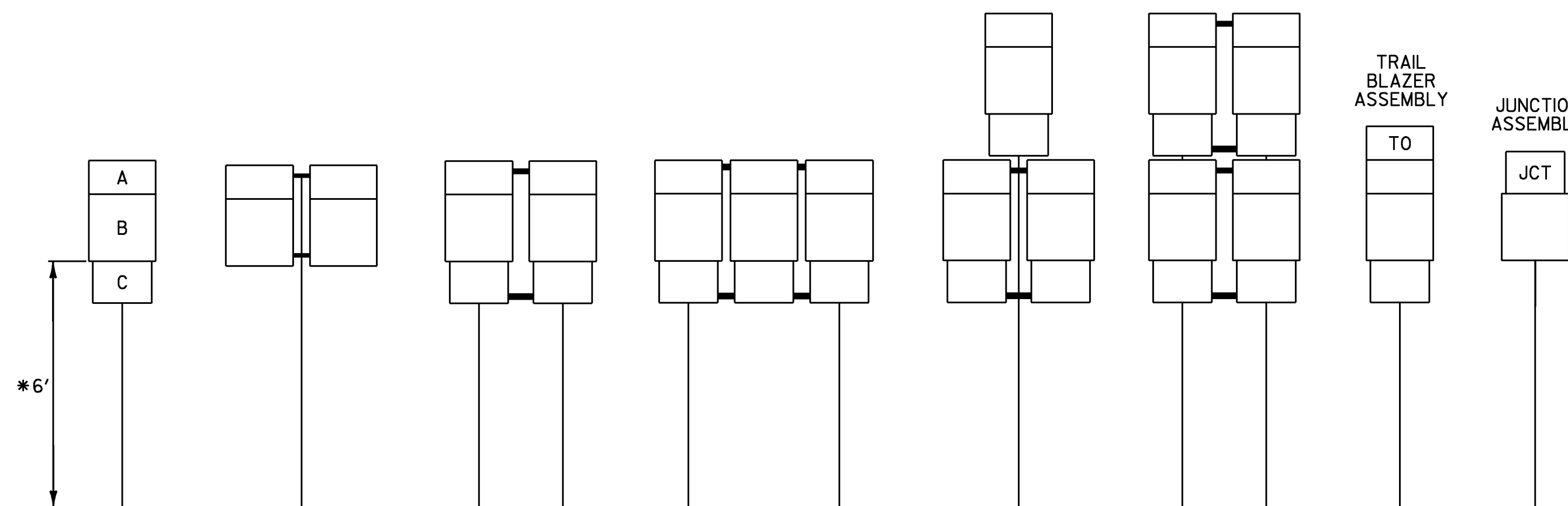
ROUTE MARKER ASSEMBLY FRAMES



NOTES:

- NOTES FOR #1 AND #2 FRAME:
 - WITH ONE 30 INCH THREE DIGIT SIGN
 - WITH TWO 30 INCH THREE DIGIT SIGNS
- NOTES FOR #3 FRAME:
 - WITH ONE 30 INCH THREE DIGIT SIGN IN AN OUTSIDE POSITION.
 - WITH ONE 30 INCH THREE DIGIT SIGN IN THE CENTER POSITION OR TWO SUCH SIGNS IN THE OUTSIDE POSITIONS.
 - WITH THREE 30 INCH THREE DIGIT SIGNS.
- ALL HOLES SHALL BE 7/16 INCH DIAMETER. FOR OTHER SIGN COMBINATIONS, THAN ABOVE, THE FRAME DIMENSIONS AND HOLE SPACING SHALL BE MODIFIED AS NECESSARY. THE FRAME SHALL BE PAINTED WITH ONE COAT OF PRIMER AND A SECOND COAT OF BLACK PAINT. THE PAINT SHALL BE OF THE TYPE USED ON EXTERIOR METAL SURFACES TO PREVENT METAL CORROSION.
- STANDARD FRAMES SHALL BE 5/16 INCH x 1/2 INCH WELDED A-36 STEEL.
- ALL DIMENSIONS SHOWN IN INCHES UNLESS OTHERWISE NOTED.

STANDARD MOUNTING OF ROUTE MARKER ASSEMBLIES



- A - CARDINAL DIRECTION MARKER
- B - ROUTE NUMBER
- C - ADVANCE TURN ARROW OR DIRECTIONAL ARROW

* WHERE PARKING OR PEDESTRIAN TRAFFIC WILL OCCUR IN THE IMMEDIATE VICINITY OF THESE SIGNS MINIMUM VERTICAL CLEARANCE SHALL BE INCREASED TO SEVEN FEET

INSTALLATION SEQUENCE:

IN MULTIPLE HORIZONTAL MOUNTINGS PLACE A ROUTE MARKER ASSEMBLY INDICATING A LEFT TURN ON THE LEFT SIDE OF THE ASSEMBLY; RIGHT TURN ON THE RIGHT SIDE. FOR VERTICALLY STACKED MOUNTINGS PLACE THE STRAIGHT THROUGH MOVE INDICATION ON TOP, THE LEFT OR RIGHT TURNS AS APPROPRIATE BENEATH.

NOTES:

- ALL DIMENSIONS SHOWN IN INCHES UNLESS OTHERWISE NOTED.
- VERTICAL FRAME MEMBERS SHALL LINE UP WITH SIGN POST ON WHICH THEY ARE MOUNTED.



1.5" RADIUS, 0.375" BORDER, 0.375" INDENT
 COLORS: LEGEND - BLACK
 BACKGROUND - YELLOW
 TEXT STYLE: B

* LATERAL SPACING TO OUTSIDE OF PANEL SHALL BE A MINIMUM OF 1.5"

W16-8



1.5" RADIUS, 0.375" BORDER, 0.375" INDENT
 COLORS: LEGEND - BLACK
 BACKGROUND - YELLOW
 TEXT STYLE: B

* LATERAL SPACING TO OUTSIDE OF PANEL SHALL BE A MINIMUM OF 1.5"

W16-8



1.5" RADIUS, 0.375" BORDER, 0.375" INDENT
 COLORS: LEGEND - BLACK
 BACKGROUND - YELLOW
 TEXT STYLE: B

* LATERAL SPACING TO OUTSIDE OF PANEL SHALL BE A MINIMUM OF 1.5"

W16-8



3" RADIUS, 0.75" BORDER, 0.50" INDENT
 COLORS: LEGEND - BLACK
 BACKGROUND - YELLOW
 TEXT STYLE: D; STANDARD ARROW CUSTOM 6" WIDE X 4" HIGH

* LATERAL SPACING TO OUTSIDE OF PANEL SHALL BE A MINIMUM OF 3"

W16-8a

ADVANCE WARNING SIGN PLAQUE NOTES:

- ALL ADVANCE STREET NAME PLAQUE SIGNS (W16-8 AND W16-8a) USED TO IDENTIFY THE NAME OF THE INTERSECTING STREETS SHALL HAVE INITIAL UPPER CASE LETTERS AND USED IN CONJUNCTION WITH LOWERCASE LETTERS (I.E. Main St, Foster Rd, East Ave, West Ln).

PROJECT NAME: DERBY - BLOOMFIELD

PROJECT NUMBER: STPG SIGN (22)

FILE NAME: 09b026_TS.DGN
 PROJECT LEADER: N. AVERY
 DESIGNED BY: N. AVERY
 GUIDE SIGN ASSEMBLY

PLOT DATE: 11-JUN-2009
 DRAWN BY: N. AVERY
 CHECKED BY: A. GAMBLE
 SHEET 7 OF 79