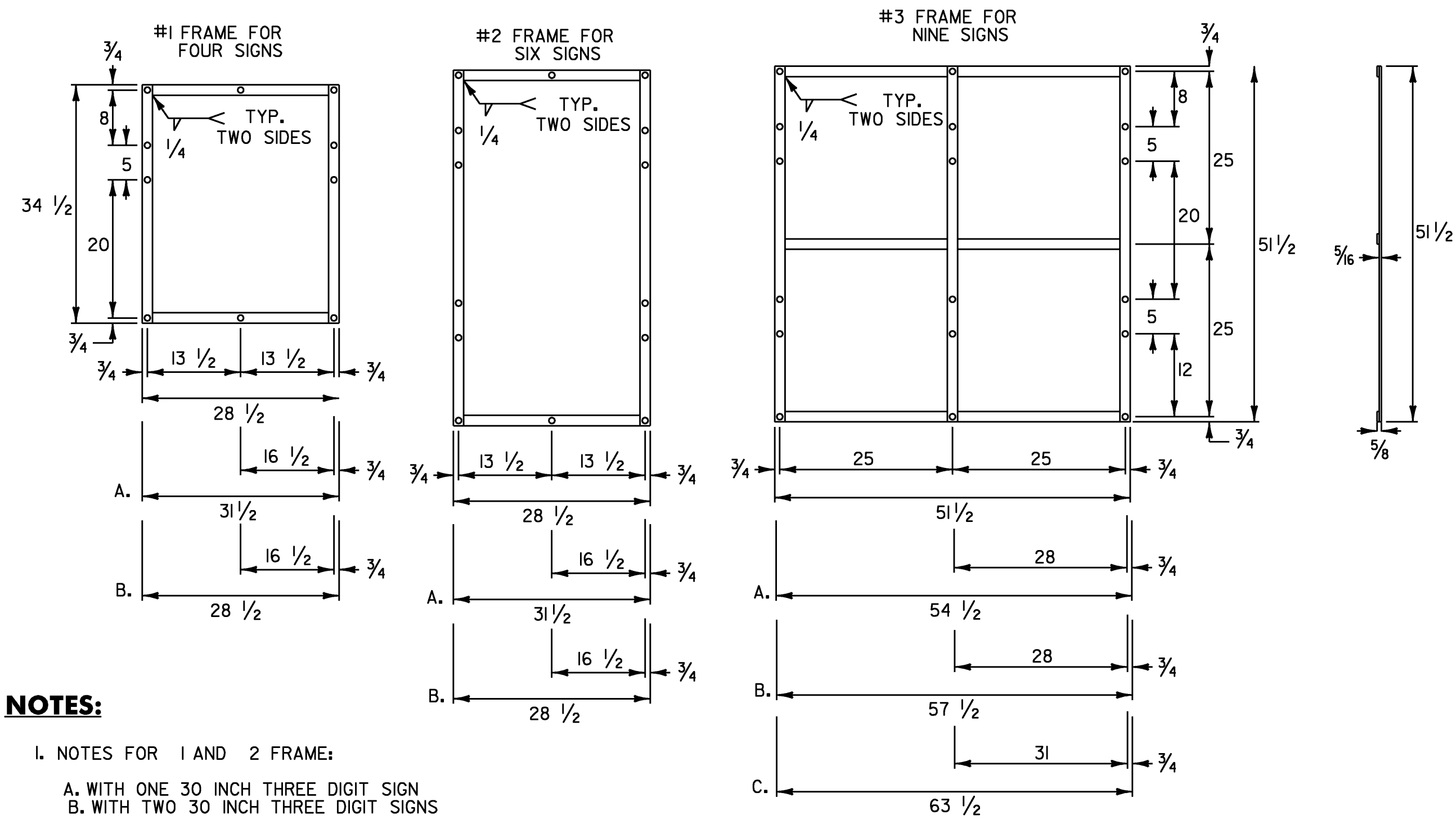


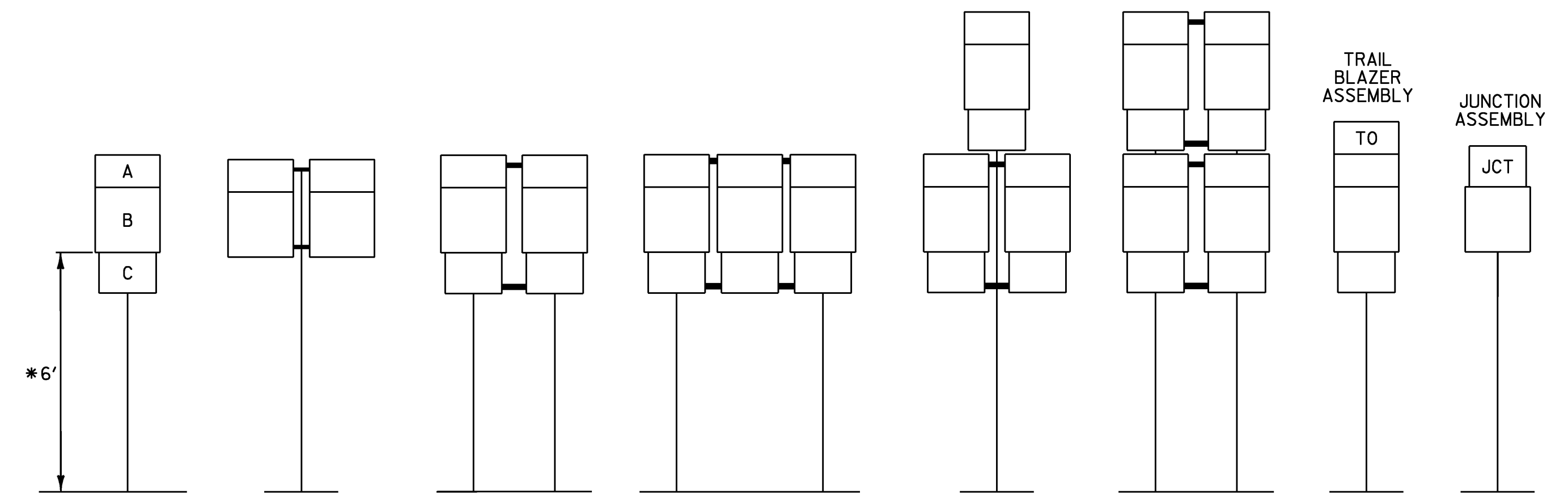
ROUTE MARKER ASSEMBLY FRAMES



NOTES:

- NOTES FOR 1 AND 2 FRAME:
 - A. WITH ONE 30 INCH THREE DIGIT SIGN
 - B. WITH TWO 30 INCH THREE DIGIT SIGNS
- NOTES FOR 3 FRAME:
 - A. WITH ONE 30 INCH THREE DIGIT SIGN IN AN OUTSIDE POSITION.
 - B. WITH ONE 30 INCH THREE DIGIT SIGN IN THE CENTER POSITION OR TWO SUCH SIGNS IN THE OUTSIDE POSITIONS.
 - C. WITH THREE 30 INCH THREE DIGIT SIGNS.
- ALL HOLES SHALL BE 5/16 INCH DIAMETER. FOR OTHER SIGN COMBINATIONS, THAN ABOVE, THE FRAME DIMENSIONS AND HOLE SPACING SHALL BE MODIFIED AS NECESSARY. THE FRAME SHALL BE PAINTED WITH ONE COAT OF PRIMER AND A SECOND COAT OF BLACK PAINT. THE PAINT SHALL BE OF THE TYPE USED ON EXTERIOR METAL SURFACES TO PREVENT METAL CORROSION.
- STANDARD FRAMES SHALL BE 5/16 INCH x 1 1/2 INCH WELDED A-36 STEEL.
- ALL DIMENSIONS SHOWN IN INCHES UNLESS OTHERWISE NOTED.

STANDARD MOUNTING OF ROUTE MARKER ASSEMBLIES

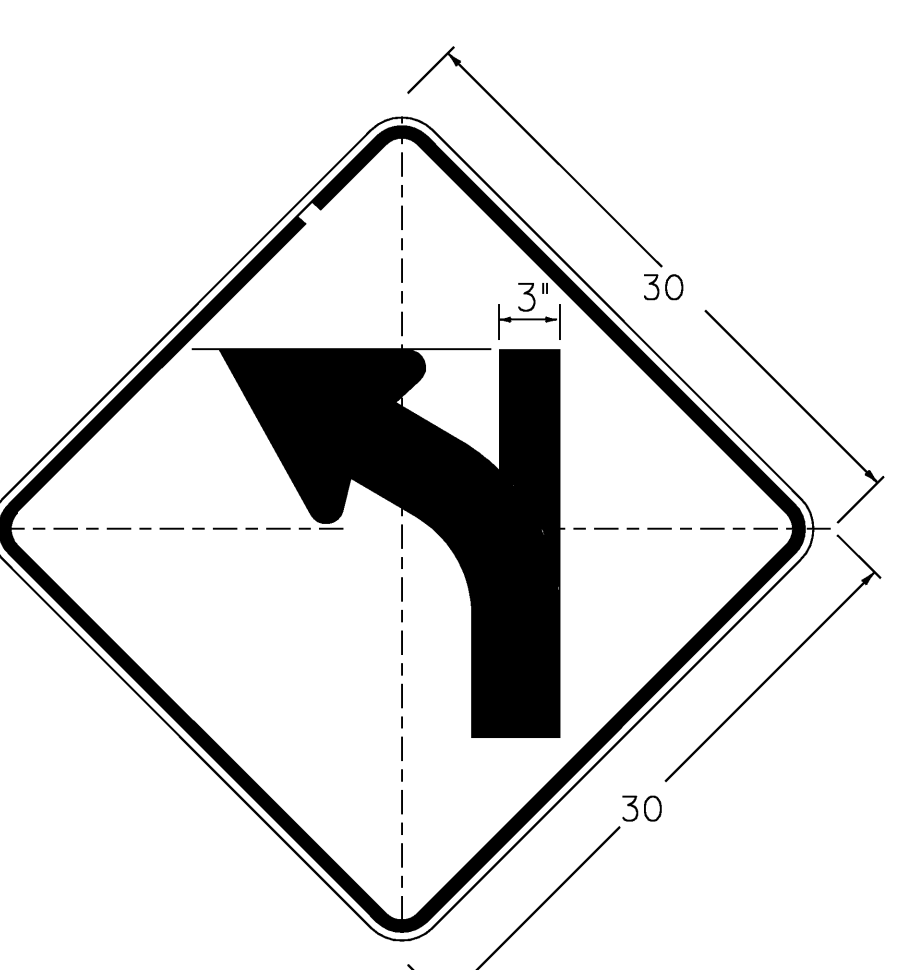


- A - CARDINAL DIRECTION MARKER
 - B - ROUTE NUMBER
 - C - ADVANCE TURN ARROW OR DIRECTIONAL ARROW
- * WHERE PARKING OR PEDESTRIAN TRAFFIC WILL OCCUR IN THE IMMEDIATE VICINITY OF THESE SIGNS MINIMUM VERTICAL CLEARANCE SHALL BE INCREASED TO SEVEN FEET

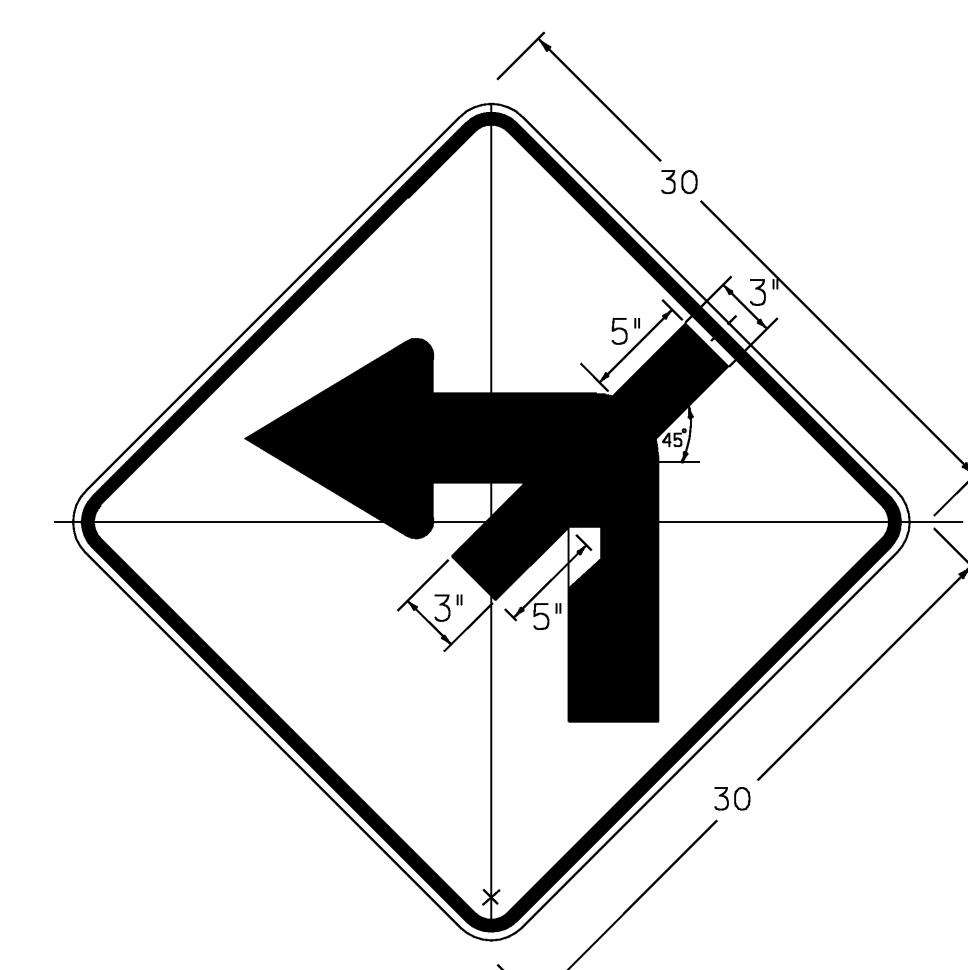
INSTALLATION SEQUENCE:
 IN MULTIPLE HORIZONTAL MOUNTINGS PLACE A ROUTE MARKER ASSEMBLY INDICATING A LEFT TURN ON THE LEFT SIDE OF THE ASSEMBLY; RIGHT TURN ON THE RIGHT SIDE. FOR VERTICALLY STACKED MOUNTINGS PLACE THE STRAIGHT THROUGH MOVE INDICATION ON TOP, THE LEFT OR RIGHT TURNS AS APPROPRIATE BENEATH.

NOTES:

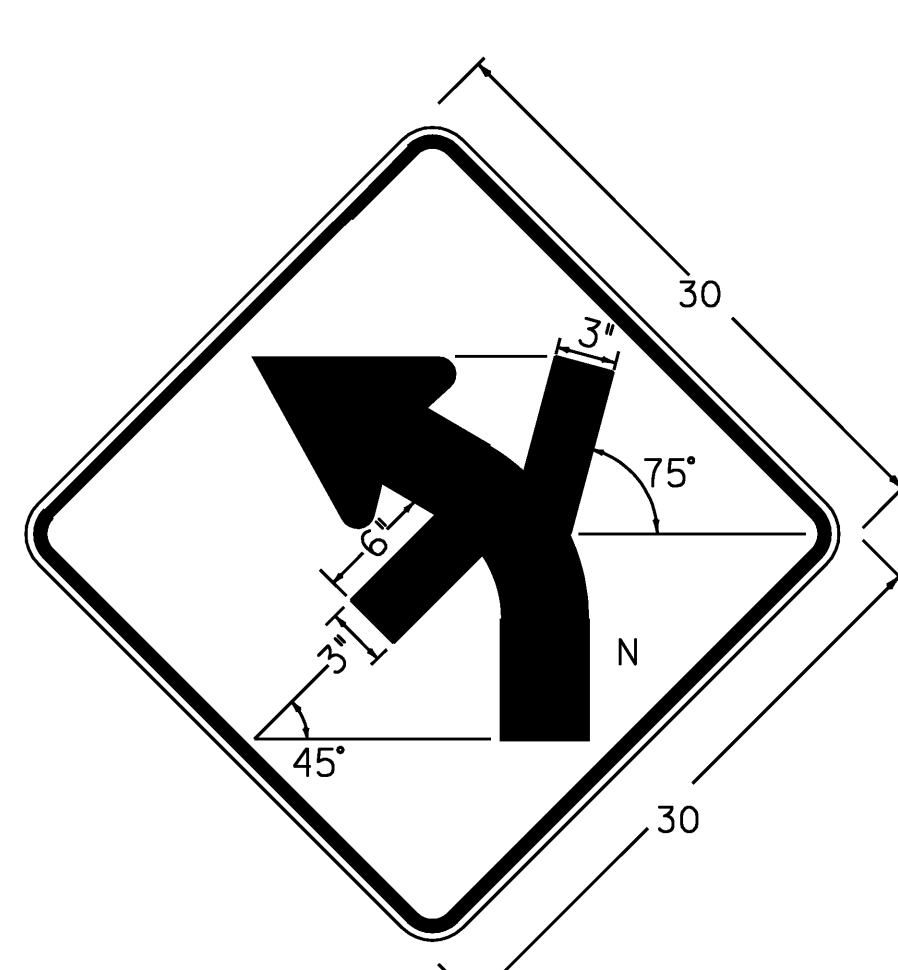
- ALL DIMENSIONS SHOWN IN INCHES UNLESS OTHERWISE NOTED.
- VERTICAL FRAME MEMBERS SHALL LINE UP WITH SIGN POST ON WHICH THEY ARE MOUNTED.



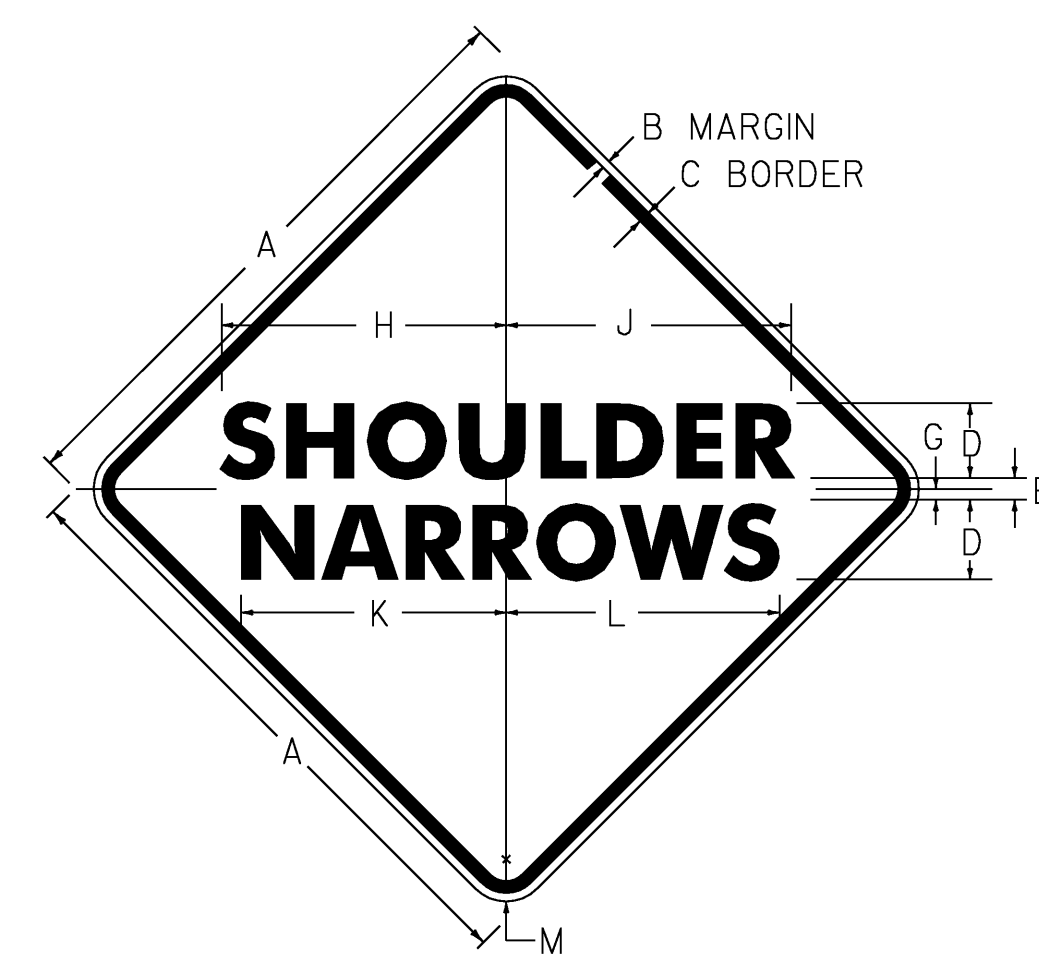
W1-2Mg L
 DIMENSIONS NOT SHOWN FOR THIS DETAIL SHALL CONFORM TO THE LATEST EDITION OF THE 2003 MUTCD FOR SIGN DETAIL W1-2. UNLESS OTHERWISE NOTED FOR THIS DETAIL



W1-1Me L(R)
 DIMENSIONS NOT SHOWN FOR THIS DETAIL SHALL CONFORM TO THE LATEST EDITION OF THE 2003 MUTCD FOR SIGN DETAIL W1-1. UNLESS OTHERWISE NOTED FOR THIS DETAIL

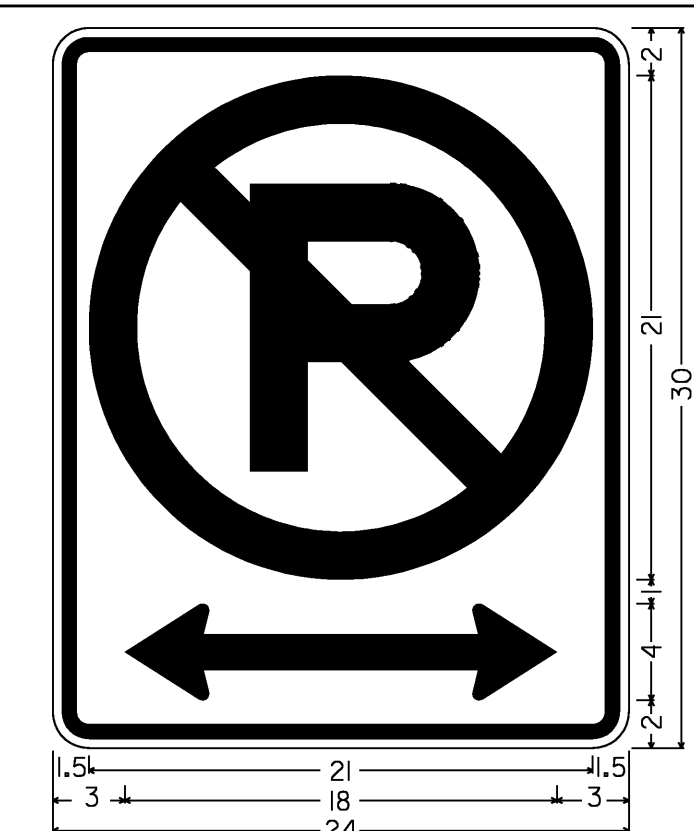


W1-2Mm L(R)
 DIMENSIONS NOT SHOWN FOR THIS DETAIL SHALL CONFORM TO THE LATEST EDITION OF THE 2003 MUTCD FOR SIGN DETAIL W1-2. UNLESS OTHERWISE NOTED FOR THIS DETAIL

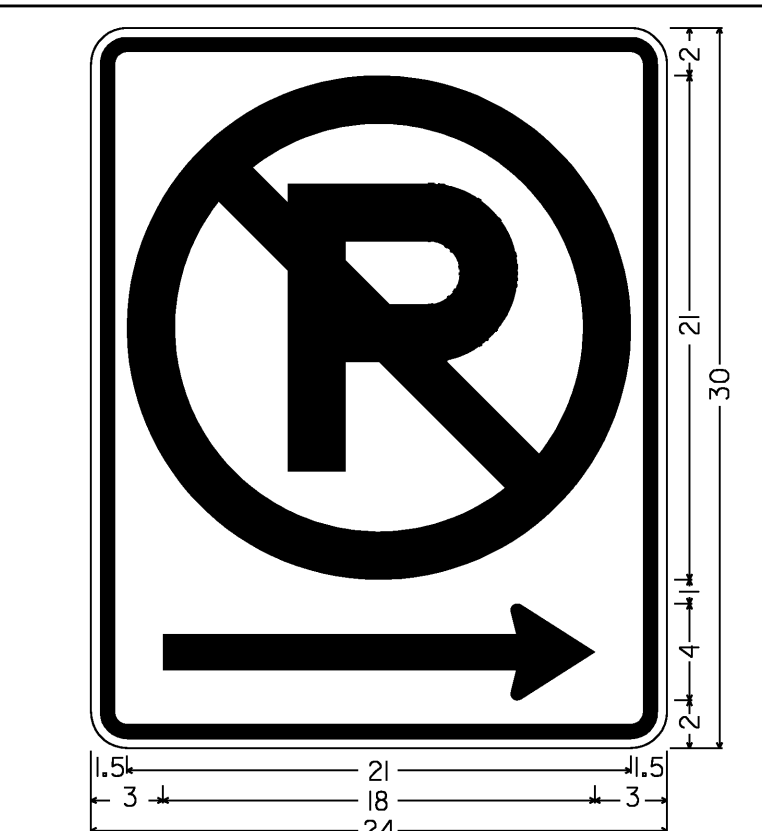


VW-619
 COLORS: LEGEND - BLACK BACKGROUND - YELLOW

SIGN	DIMENSIONS (INCHES)												
	A	B	C	D	E	F	G	H	J	K	L	M	
MIN	30	1/2	3/4	4C	3	4C	I	11 5/2	11 5/2	10 5/2	10 5/2	1 7/8	
STD.	36	5/8	7/8	5C	3	6D	I	13 1/16	13 1/16	17 5/8	18 1/4	2 1/4	
EXPWY.	48	3/4	1 1/4	7D	3 1/2	7D	I	23 3/16	23 3/16	21 1/2	21 1/16	3	



VR-052
 1.5" RADIUS, 0.625" BORDER, 0.375" INDENT
 COLORS: TEXT & BORDER - BLACK CIRCLE & DIAGONAL - RED BACKGROUND - WHITE REFER TO R8-3A



VR-052R (L)
 1.5" RADIUS, 0.625" BORDER, 0.375" INDENT
 COLORS: TEXT & BORDER - BLACK CIRCLE & DIAGONAL - RED BACKGROUND - WHITE REFER TO R8-3A

PROJECT NAME: STAMFORD - ANDOVER
 PROJECT NUMBER: STPG SIGN (20)
 FILE NAME: 09b022_TS.DGN
 PROJECT LEADER: N. AVERY
 DESIGNED BY: N. AVERY
 GUIDE SIGN ASSEMBLY
 PLOT DATE: 06-AUG-2009
 DRAWN BY: N. AVERY
 CHECKED BY: A. GAMBLE
 SHEET 7 OF 198