

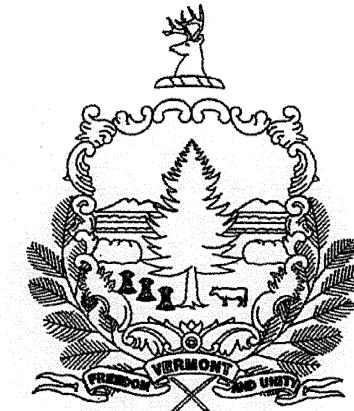
INDEX OF SHEETS

1.	TITLE SHEET
2.	QUANTITY SHEET
3-4.	TRAFFIC SIGNAL SHEETS

STANDARDS

E-100	CONSTRUCTION APPROACH SIGNS	01/02/2004
E-100A	SIDE ROAD CONSTRUCTION APPROACH SIGNS	01/02/2004
E-101	CONSTRUCTION SIGN DETAILS	05/30/2003
E-102	CONSTRUCTION SIGN DETAILS	06/30/2003
E-110	MAJOR MAINTENANCE OPERATION LANE CLOSURE	08/08/1995
E-111	MINOR MAINTENANCE OPERATIONS	03/11/1997
E-171A	TRAFFIC CONTROL SIGNALS GENERAL NOTES AND DETAILS	08/09/1995
E-171B	TRAFFIC CONTROL SIGNALS MISC. DETAILS	08/09/1995
E-171C	TRAFFIC CONTROL SIGNALS CANTILEVER MOUNTING DETAILS	08/09/1995

STATE OF VERMONT
AGENCY OF TRANSPORTATION



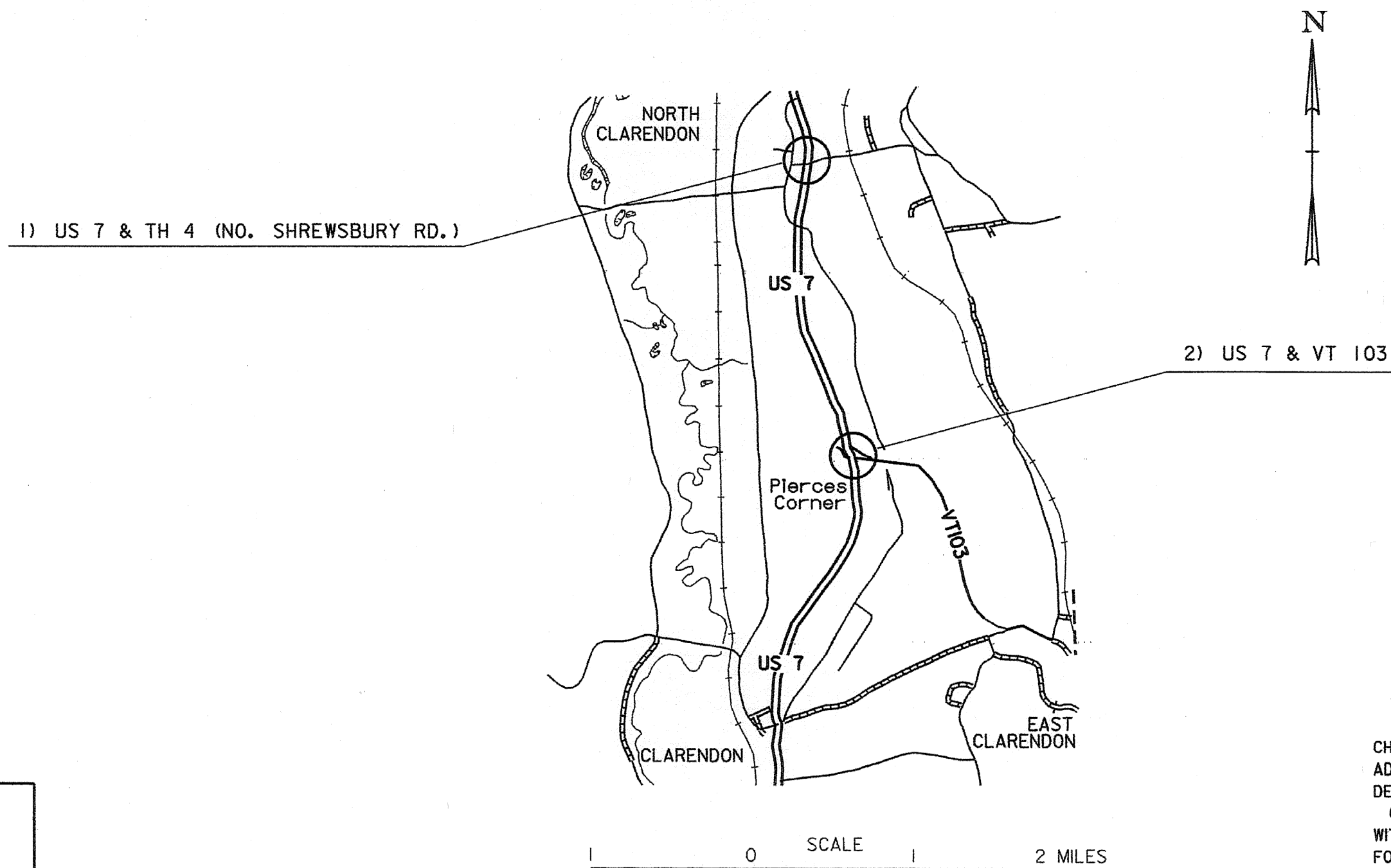
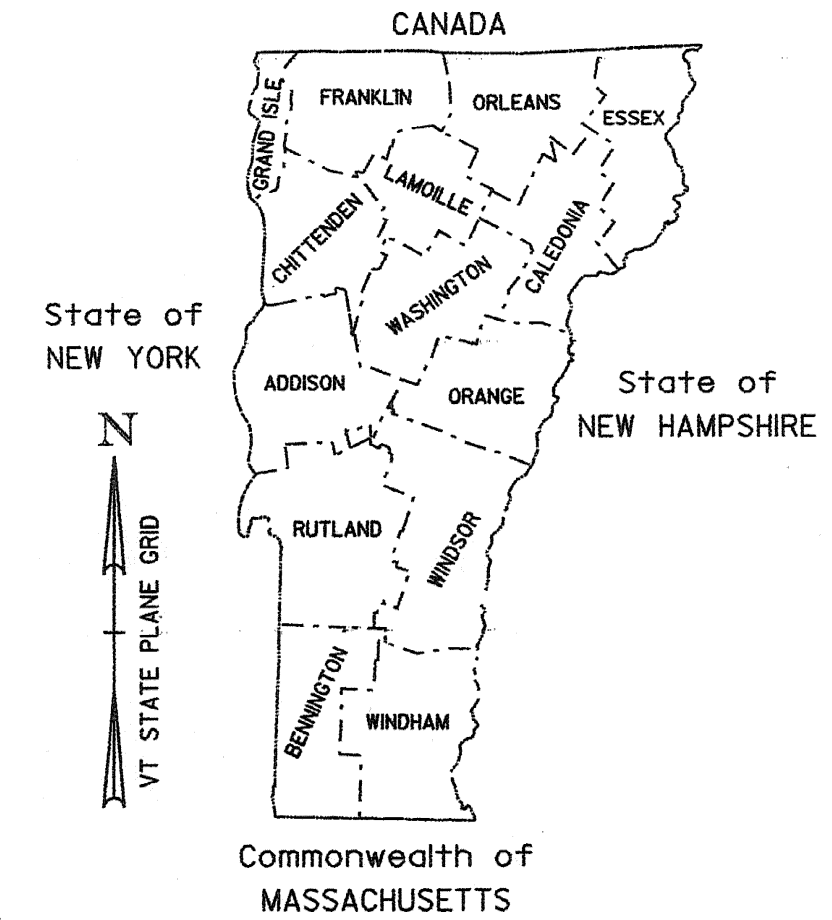
PROPOSED IMPROVEMENT
TOWN OF CLARENDON
COUNTY OF RUTLAND

INTERSECTIONS OF: 1) US 7 & TH 4 (NO. SHREWSBURY RD.)
2) US 7 & VT 103

TOWN OF CLARENDON, AT THE INTERSECTION OF US 7 & TH 4 (NO. SHREWSBURY RD.) (MM 5.19)
AND THE INTERSECTION OF US 7 & VT 103 (MM 3.34).

LENGTH OF ROADWAY - US 7 & NO. SHREWSBURY RD. 500 FT .09 MILES
LENGTH OF ROADWAY - US 7 & VT 103. 500 FT .09 MILES
TOTAL LENGTH OF ROADWAY 1000 FT .18 MILES

THIS PROJECT SHALL CONSIST OF ALL WORK ASSOCIATED WITH THE INSTALLATION
OF DILEMMA ZONE DETECTION AT TWO SIGNALIZED INTERSECTIONS.



RECORD PLANS

CONTRACTOR: EAST COAST SIGNALS, INC. - DEERFIELD, NH

RESIDENT ENGINEER: ERIC FOSTER

CONSTRUCTION BEGAN: SEPTEMBER 15, 2009

CONSTRUCTION COMPLETE: OCTOBER 28, 2009

RECORD PLANS BY: ERIC FOSTER, N. GARBACIK

I HEREBY CERTIFY THAT ALL THE CONSTRUCTION REQUIRED BY THIS SET OF DRAWINGS HAS BEEN ACCOMPLISHED AS INDICATED HEREIN.

BY *Eric Foster* RESIDENT ENGINEER

DATE 1-19-10

NOTE: Any further information concerning final quantities, amounts or other details relative to this project may be found at Central Files in the electronic archives.

CONVENTIONAL SYMBOLS

COUNTY LINE	
TOWN LINE	
LIMITS OF ACCESS	
POINT OF ACCESS	
FENCE LINE	
STONE WALL	
TRAVELED WAY	
GUARD RAIL	
RAILROAD	
SURVEY LINE	
CULVERT	
POWER POLE	
TELEPHONE POLE	
TREES	
CONTROL OF ACCESS	
PROPERTY LINE	
R.O.W. TAKING LINE	
SLOPE RIGHTS	
TOP OF CUT	
TOE OF SLOPE	

SURVEYED BY : N/A
SURVEYED DATE : N/A

DATUM
VERTICAL N/A
HORIZONTAL N/A

THESE PLANS ARE SUBJECT TO SUCH ENGINEERING CHANGES AS MAY BE REQUIRED BY THE FEDERAL HIGHWAY ADMINISTRATION OR THE DIRECTOR OF PROGRAM DEVELOPMENT.

CONSTRUCTION IS TO BE CARRIED ON IN ACCORDANCE WITH THESE PLANS AND THE STANDARD SPECIFICATIONS FOR CONSTRUCTION DATED 2006, AS APPROVED BY THE FEDERAL HIGHWAY ADMINISTRATION ON JUNE 15, 2006 FOR USE ON THIS PROJECT, INCLUDING ALL SUBSEQUENT REVISIONS AND SUCH REVISED SPECIFICATIONS AND SPECIAL PROVISIONS AS ARE INCORPORATED IN THESE PLANS.

DIRECTOR OF PROGRAM DEVELOPMENT

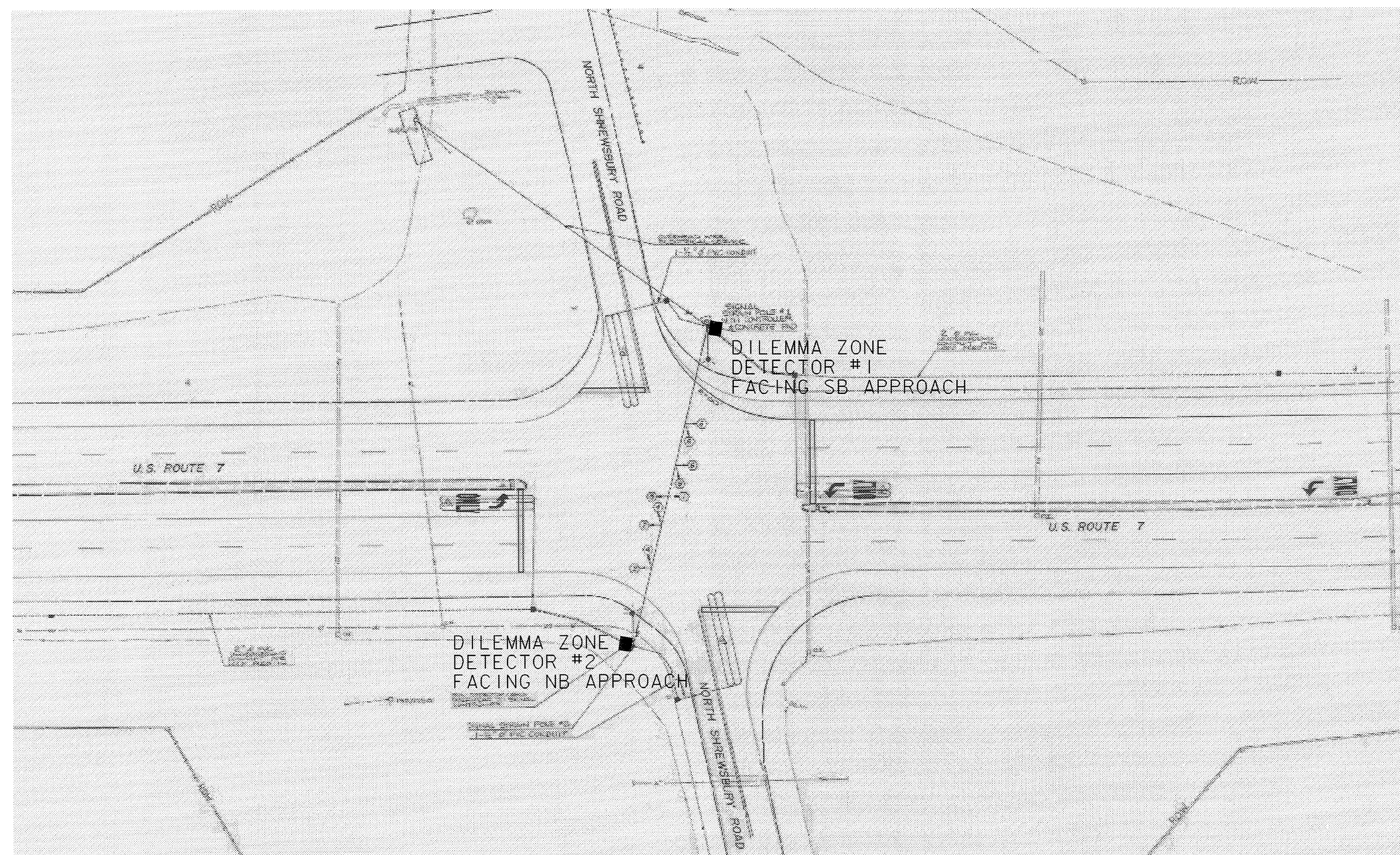
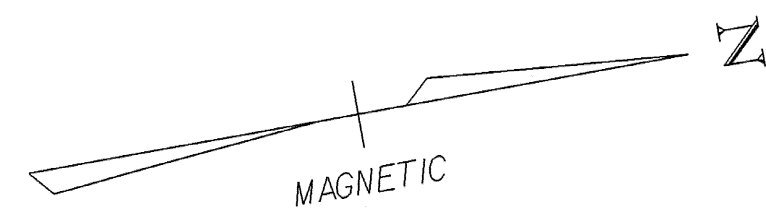
APPROVED *[Signature]* DATE 4-12-09

PROJECT MANAGER : B. NYQUIST

PROJECT NAME : CLARENDON

PROJECT NUMBER : NHG SGNL (33)

SHEET 1 OF 4 SHEETS



US ROUTE 7

US ROUTE 7

■ - DILEMMA ZONE DETECTOR

CONSTRUCTION ACTIVITIES WILL BE SHORT DURATION AND WILL LIKELY RESULT IN MINIMAL IMPACT TO THE TRAVELING PUBLIC. ALL WORK SHALL BE PERFORMED DURING DAYTIME, OFF-PEAK HOURS. REFER TO THE VERMONT AGENCY OF TRANSPORTATION STANDARD DRAWINGS E-110 AND E-111 FOR ADDITIONAL TRAFFIC CONTROL INFORMATION. TRAFFIC CONTROL WARNING SIGNS SHALL BE PROVIDED AS NECESSARY ON EACH APPROACH PER THE MANUAL ON UNIFORM TRAFFIC CONTROL DEVICES (MUTCD). PAYMENT FOR THESE SIGNS, REFLECTORIZED PLASTIC DRUMS, ECT. SHALL BE PAID UNDER CONTRACT ITEM 641.10.

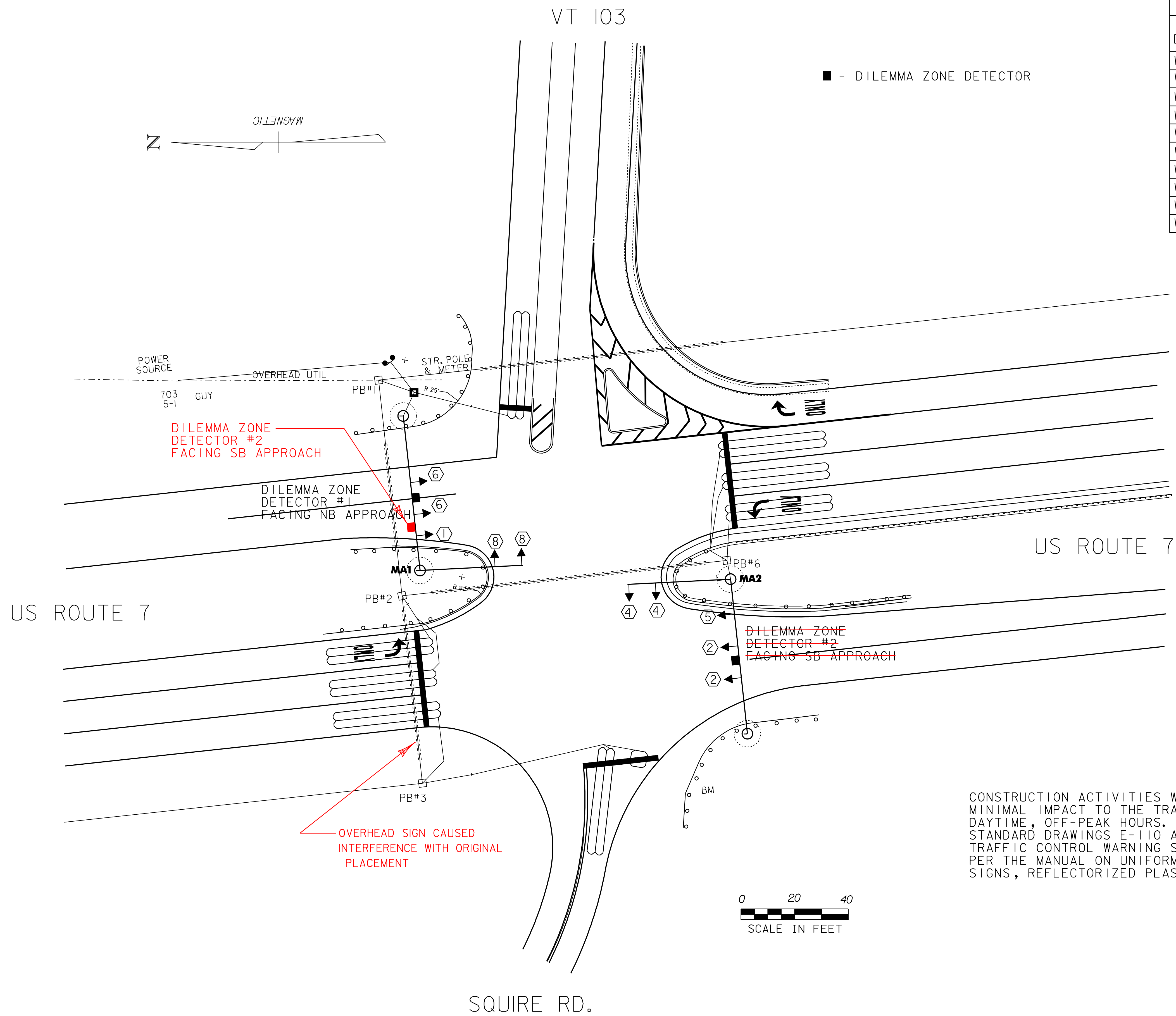
LIST OF MAJOR EQUIPMENT	
ITEM # 900.620 SPECIAL PROVISION (TRAFFIC CONTROL DILEMMA ZONE DETECTION SYS, INT.) (US7 @ TH 4)	QUANTITY
WX-SS-H200 WAVETRONIX ADVANCE SENSOR	2 EA
WX-SS-H611 SENSOR MOUNTS	2 EA
WX-SS-H701 SENSOR CABLES WITH CONNECTOR (DET. #1)	30 LF
WX-SS-H701 SENSOR CABLES WITH CONNECTOR (DET. #2)	200 LF
WX-SC-661 60" PATCH CORD	2 EA
WX-SC-100 CLICK 100 OUTPUT DIN RAIL	2 EA
WX-SC-200 CLICK 200 SURGE ARRESTOR	2 EA
WX-SC-202 CLICK 202 POWER SUPPLY	1 EA
WX-SC-205 CLICK 205 AC LINE SURGE ARRESTOR	1 EA
WX-SC-206 CLICK DIN RAIL MNT. CIRCUIT BREAKER	1 EA

- NOTES:
- 1) EXISTING CONTROLLER TIMINGS SHALL BE RETAINED.
 - 2) EXISTING CONDUIT SHALL BE UTILIZED FOR NECESSARY WIRING.
 - 3) ANY OTHER MISC. EQUIPMENT NECESSARY TO PROVIDE A FULLY FUNCTIONAL DILEMMA ZONE DETECTION SYSTEM SHALL BE INCIDENTAL TO ITEM # 900.620 SPECIAL PROVISION (TRAFFIC CONTROL DILEMMA ZONE DETECTION SYSTEM, INTERSECTION) (US 7 @ TH 4).
 - 4) RADAR ADVANCE DETECTOR SHALL PROVIDE DETECTION OF RANGE, SPEED, AND ETA OF APPROACHING VEHICLES IN A CONTINUOUS RANGE OF 200 - 400 FEET FROM THE SENSOR.
 - 5) A SENSOR DETECTION SHALL EXTEND THE GREEN TIME BY 1 SEC.

US ROUTE 7 & TH 4

PROJECT NAME: CLARENDON	PLOT DATE: 16-APR-2009
PROJECT NUMBER: NHG SGNL(33)	DRAWN BY: B. MCAVOY
FILE NAME: 09b008/Traffic/tb008nul.dgn	CHECKED BY: B. NYQUIST
PROJECT LEADER: B. NYQUIST	SHEET 3 OF 4
DESIGNED BY: B. MCAVOY	
TRAFFIC SIGNAL SHEET 1	

N.T.S.



■ - DILEMMA ZONE DETECTOR

LIST OF MAJOR EQUIPMENT	
ITEM #	QUANTITY
900.620 SPECIAL PROVISION (TRAFFIC CONTROL DILEMMA ZONE DETECTION SYS, INT.) (US7 @ VT 103)	
WX-SS-H200 WAVETRONIX ADVANCE SENSOR	2 EA
WX-SS-H611 SENSOR MOUNTS	2 EA
WX-SS-H701 SENSOR CABLES WITH CONNECTOR (DET. #1)	80 LF
WX-SS-H701 SENSOR CABLES WITH CONNECTOR (DET. #2)	300 LF
WX-SC-661 60" PATCH CORD	2 EA
WX-SC-172 CLICK 172 CONTACT CLOSURE CARD	2 EA
WX-SC-200 CLICK 200 SURGE ARRESTOR	2 EA
WX-SC-202 CLICK 202 POWER SUPPLY	1 EA
WX-SC-205 CLICK 205 AC LINE SURGE ARRESTOR	1 EA
WX-SC-206 CLICK DIN RAIL MNT. CIRCUIT BREAKER	1 EA

- NOTES:
- EXISTING CONTROLLER TIMINGS SHALL BE RETAINED.
 - EXISTING CONDUIT SHALL BE UTILIZED FOR NECESSARY WIRING.
 - ANY OTHER MISC. EQUIPMENT NECESSARY TO PROVIDE A FULLY FUNCTIONAL DILEMMA ZONE DETECTION SYSTEM SHALL BE INCIDENTAL TO ITEM # 900.620 SPECIAL PROVISION (TRAFFIC CONTROL DILEMMA ZONE DETECTION SYSTEM, INTERSECTION) (US 7 @ VT 103).
 - RADAR ADVANCE DETECTOR SHALL PROVIDE DETECTION OF RANGE, SPEED, AND ETA OF APPROACHING VEHICLES IN A CONTINUOUS RANGE OF 200 - 400 FEET FROM THE SENSOR.
 - A SENSOR DETECTION SHALL EXTEND THE GREEN TIME BY 1 SEC.
 - THE EXISTING WAVETRONIX SENSOR MOUNTED ON THE MAST ARM AT THE NEW DETECTOR #1 LOCATION IS TO BE REMOVED, ALONG WITH ALL ASSOCIATED HARDWARE, AND SENT TO THE TRAFFIC SHOP IN BERLIN.
 - THE ADVANCE VEHICLE DETECTOR LOOPS LOCATED ON US 7 SOUTH OF THE INTERSECTION AT 378 FT SOUTH & 564 FT SOUTH ARE TO BE DISCONNECTED AT THE EXISTING PULLBOX LOCATIONS.
 - THE ADVANCE VEHICLE DETECTOR LOOPS LOCATED ON US 7 NORTH OF THE INTERSECTION AT 299 FT NORTH & 475 FT NORTH ARE TO BE DISCONNECTED AT THE EXISTING PULLBOX LOCATIONS.

CONSTRUCTION ACTIVITIES WILL BE SHORT DURATION AND WILL LIKELY RESULT IN MINIMAL IMPACT TO THE TRAVELING PUBLIC. ALL WORK SHALL BE PERFORMED DURING DAYTIME, OFF-PEAK HOURS. REFER TO THE VERMONT AGENCY OF TRANSPORTATION STANDARD DRAWINGS E-110 AND E-111 FOR ADDITIONAL TRAFFIC CONTROL INFORMATION. TRAFFIC CONTROL WARNING SIGNS SHALL BE PROVIDED AS NECESSARY ON EACH APPROACH PER THE MANUAL ON UNIFORM TRAFFIC CONTROL DEVICES (MUTCD). PAYMENT FOR THESE SIGNS, REFLECTORIZED PLASTIC DRUMS, ECT. SHALL BE PAID UNDER CONTRACT ITEM 641.10.

US ROUTE 7 & VT 103

PROJECT NAME: CLARENDON	
PROJECT NUMBER: NHG_SHNL(33)	
FILE NAME: Q9bQ08/Traffic/1b008.dwg	PLOT DATE: 07-APR-2010 16:00
PROJECT LEADER: B.NYQUIST	DRAWN BY: B.MCAVQY
DESIGNED BY: B.MCAVQY	CHECKED BY: B.NYQUIST
TRAFFIC SIGNAL SHEET 2	SHEET 4 OF 4