

INDEX OF SHEETS

1. TITLE SHEET
2. QUANTITY SHEET
3. TRAFFIC SIGNAL SHEET

STANDARDS

E-100	CONSTRUCTION APPROACH SIGNS	01/02/2004
E-100A	SIDE ROAD CONSTRUCTION APPROACH SIGNS	01/02/2004
E-101	CONSTRUCTION SIGN DETAILS	05/30/2003
E-102	CONSTRUCTION SIGN DETAILS	06/30/2003
E-110	MAJOR MAINTENANCE OPERATION LANE CLOSURE	08/08/1995
E-111	MINOR MAINTENANCE OPERATIONS	03/11/1997
E-171A	TRAFFIC CONTROL SIGNALS GENERAL NOTES AND DETAILS	08/09/1995
E-171B	TRAFFIC CONTROL SIGNALS MISC. DETAILS	08/09/1995
E-171C	TRAFFIC CONTROL SIGNALS CANTILEVER MOUNTING DETAILS	08/09/1995

STATE OF VERMONT AGENCY OF TRANSPORTATION

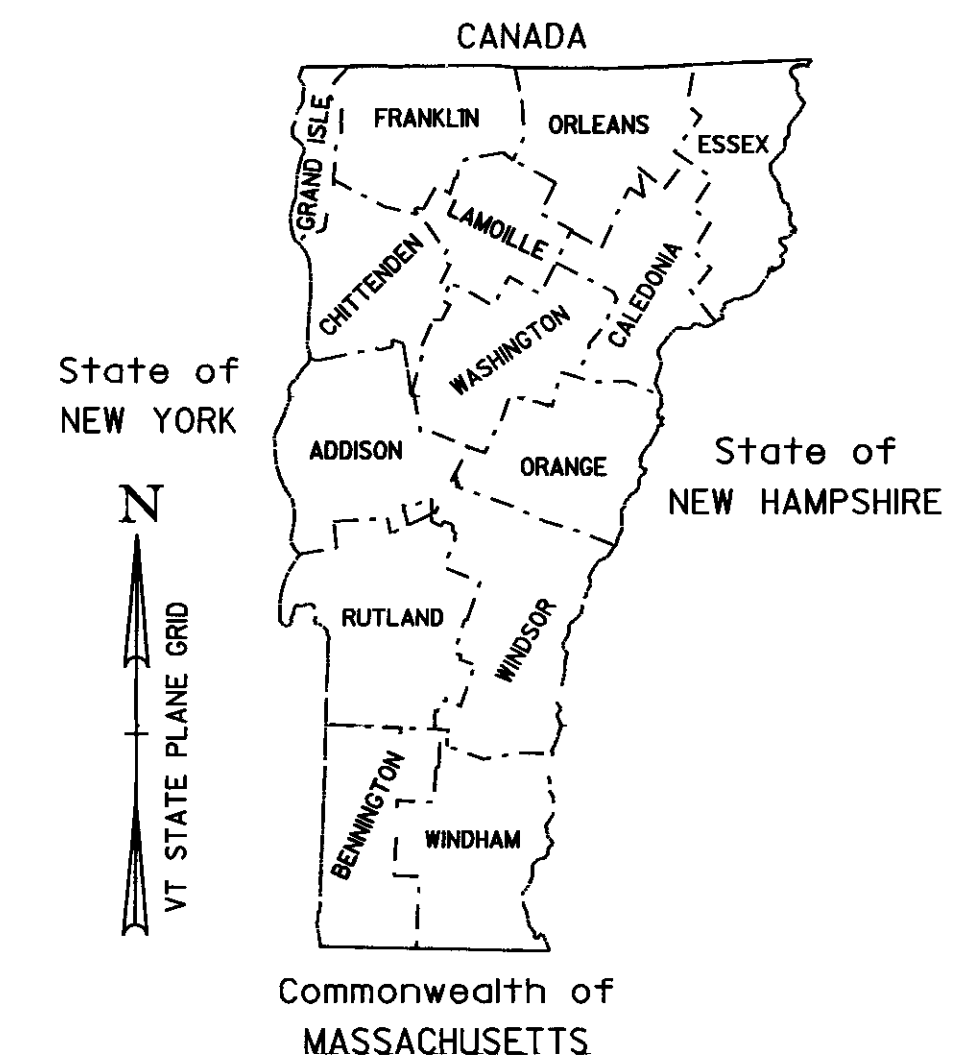


PROPOSED IMPROVEMENT TOWN OF BERLIN COUNTY OF WASHINGTON INTERSECTION OF VT 62 & FISHER ROAD

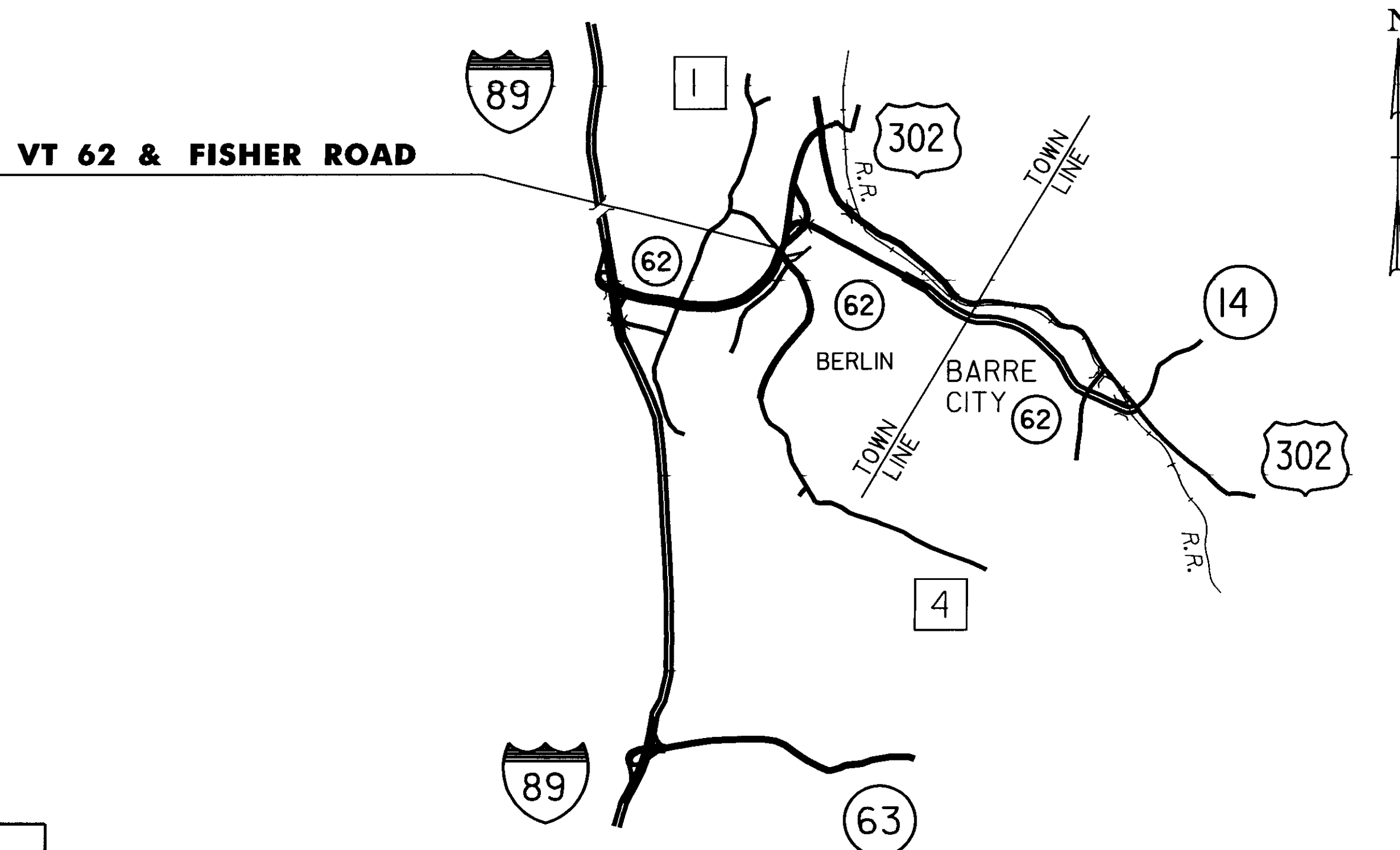
TOWN OF BERLIN, VT 62 AT THE INTERSECTION OF FISHER ROAD (MM 1.38).

LENGTH OF PROJECT 1000 FT .19 MILES

THIS PROJECT SHALL CONSIST OF ALL WORK ASSOCIATED WITH THE INSTALLATION
OF DILEMMA ZONE DETECTION AND VIDEO DETECTION AT A SIGNALIZED INTERSECTION.



RECORD PLANS	
CONTRACTOR	EAST COAST SIGNALS, INC - DEERFIELD, NH
RESIDENT ENGINEER	RICK HALE
CONSTRUCTION BEGAN	SEPTEMBER, 2009
CONSTRUCTION COMPLETE	SEPTEMBER 24, 2009
RECORD PLANS BY	RICK HALE
I HEREBY CERTIFY THAT ALL THE CONSTRUCTION REQUIRED BY THIS SET OF DRAWINGS HAS BEEN ACCOMPLISHED AS INDICATED HEREIN	
BY	<i>Rick Hale</i> RESIDENT ENGINEER
DATE	7/28/10
NOTE Any further information concerning final quantities, amounts or other details relative to this project may be found at Central Files in the electronic archives	



CONVENTIONAL SYMBOLS

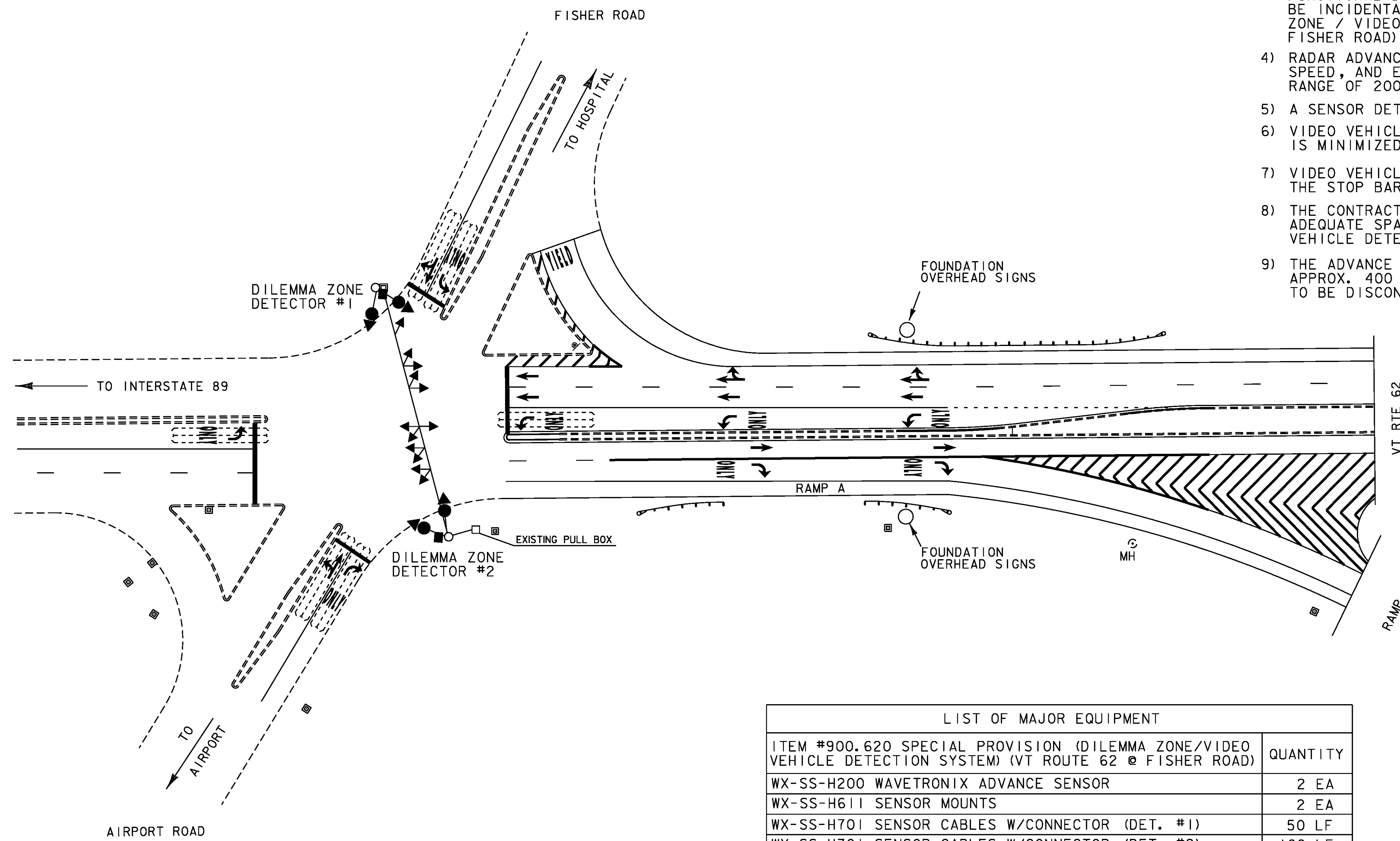
COUNTY LINE	
TOWN LINE	
LIMITS OF ACCESS	
POINT OF ACCESS	
FENCE LINE	
STONE WALL	
TRAVELED WAY	
GUARD RAIL	
RAILROAD	
SURVEY LINE	
CULVERT	
POWER POLE	
TELEPHONE POLE	
TREES	
CONTROL OF ACCESS	
PROPERTY LINE	
R.O.W. TAKING LINE	
SLOPE RIGHTS	
TOP OF CUT	
TOE OF SLOPE	

SURVEYED BY : N/A
 SURVEYED DATE : N/A
 DATUM
 VERTICAL N/A
 HORIZONTAL N/A

THESE PLANS ARE SUBJECT TO SUCH ENGINEERING CHANGES AS MAY BE REQUIRED BY THE FEDERAL HIGHWAY ADMINISTRATION OR THE DIRECTOR OF PROGRAM DEVELOPMENT.
 CONSTRUCTION IS TO BE CARRIED ON IN ACCORDANCE WITH THESE PLANS AND THE STANDARD SPECIFICATIONS FOR CONSTRUCTION DATED 2006, AS APPROVED BY THE FEDERAL HIGHWAY ADMINISTRATION ON JUNE 15, 2006 FOR USE ON THIS PROJECT, INCLUDING ALL SUBSEQUENT REVISIONS AND SUCH REVISED SPECIFICATIONS AND SPECIAL PROVISIONS AS ARE INCORPORATED IN THESE PLANS.

BUILT AS DESIGNED

DIRECTOR OF PROGRAM DEVELOPMENT	
APPROVED _____	DATE _____
PROJECT MANAGER : B. NYQUIST	
PROJECT NAME :	BERLIN
PROJECT NUMBER :	STPG SGNL (32)
SHEET 1 OF 3 SHEETS	



- NOTES:
- 1) EXISTING CONTROLLER TIMINGS SHALL BE RETAINED.
 - 2) EXISTING CONDUIT SHALL BE UTILIZED FOR NECESSARY WIRING.
 - 3) ANY OTHER MISC. EQUIPMENT NECESSARY TO PROVIDE FULLY FUNCTIONAL DILEMMA ZONE & VIDEO DETECTION SYSTEMS SHALL BE INCIDENTAL TO ITEM # 900.620 SPECIAL PROVISION (DILEMMA ZONE / VIDEO VEHICLE DETECTION SYSTEM) (VT ROUTE 62 @ FISHER ROAD).
 - 4) RADAR ADVANCE DETECTOR SHALL PROVIDE DETECTION OF RANGE, SPEED, AND ETA OF APPROACHING VEHICLES IN A CONTINUOUS RANGE OF 200 - 400 FEET FROM THE SENSOR.
 - 5) A SENSOR DETECTION SHALL EXTEND THE GREEN TIME BY 1 SEC.
 - 6) VIDEO VEHICLE DETECTORS SHALL BE PLACED SO THAT OCCLUSION IS MINIMIZED AND PHASING IS NOT AFFECTED.
 - 7) VIDEO VEHICLE DETECTION AREAS SHALL EXTEND 5 FT PAST THE STOP BAR.
 - 8) THE CONTRACTOR SHALL VERIFY IN THE FIELD THAT THERE IS ADEQUATE SPACE IN THE CONDUIT AND CONTROLLER FOR VIDEO VEHICLE DETECTION CABLE AND EQUIPMENT.
 - 9) THE ADVANCE VEHICLE DETECTOR LOOPS LOCATED ON VT 62 APPROX. 400 FT FROM THE EXISTING STOP BARS ARE TO BE DISCONNECTED AT THE EXISTING PULLBOX LOCATIONS.

LIST OF MAJOR EQUIPMENT	
ITEM #900.620 SPECIAL PROVISION (DILEMMA ZONE/VIDEO VEHICLE DETECTION SYSTEM) (VT ROUTE 62 @ FISHER ROAD)	QUANTITY
WX-SS-H200 WAVETRONIX ADVANCE SENSOR	2 EA
WX-SS-H611 SENSOR MOUNTS	2 EA
WX-SS-H701 SENSOR CABLES W/CONNECTOR (DET. #1)	50 LF
WX-SS-H701 SENSOR CABLES W/CONNECTOR (DET. #2)	160 LF
WX-SC-661 60" PATCH CORD	2 EA
WX-SC-100 CLICK 100 OUTPUT DIN RAIL	2 EA
WX-SC-200 CLICK 200 SURGE ARRESTOR	2 EA
WX-SC-202 CLICK 202 POWER SUPPLY	1 EA
WX-SC-205 CLICK 205 AC LINE SURGE ARRESTOR	1 EA
WX-SC-206 CLICK DIN RAIL MNT. CIRCUIT BREAKER	1 EA
ECONOLITE AUTOSCOPE SOLO TERRA VIDEO DETECTION	4 EA
NEMA TS2 CONTROLLER	1 EA

- VIDEO DETECTION CAMERA
 - DILEMMA ZONE DETECTOR

CONSTRUCTION ACTIVITIES WILL BE SHORT DURATION AND WILL LIKELY RESULT IN MINIMAL IMPACT TO THE TRAVELING PUBLIC. ALL WORK SHALL BE PERFORMED DURING DAYTIME, OFF-PEAK HOURS. REFER TO THE VERMONT AGENCY OF TRANSPORTATION STANDARD DRAWINGS E-110 AND E-111 FOR ADDITIONAL INFORMATION. TRAFFIC CONTROL WARNING SIGNS SHALL BE PROVIDED AS NECESSARY ON EACH APPROACH PER THE MANUAL ON UNIFORM TRAFFIC CONTROL DEVICES (MUTCD). PAYMENT FOR THESE SIGNS, REFLECTORIZED PLASTIC DRUMS, ECT. SHALL BE PAID UNDER CONTRACT ITEM 641.10.

NOTE: NEW NEMA TS2 CONTROLLER TO REPLACE EXISTING ECONOLITE MODEL 8000 CONTROLLER. EXISTING CONTROLLER TO BE SALVAGED TO THE VTRANS TRAFFIC SHOP IN BERLIN, VT. CONTACT RUSS VELANDER AT 828-3535 WITH ANY QUESTIONS. NEW CONTROLLER SHALL BE EITHER ECONOLITE OR NAZTEC BRAND.

PROJECT NAME: BERLIN	PLOT DATE: 24-APR-2009
PROJECT NUMBER: STPG S6NL (32)	DRAWN BY: B. MCAVOY
FILE NAME: 09b006/Traffic/tb006nul.dg	CHECKED BY: B. NYQUIST
DESIGNED BY: B. MCAVOY	TRAFFIC SIGNAL SHEET
	SHEET 3 OF 3