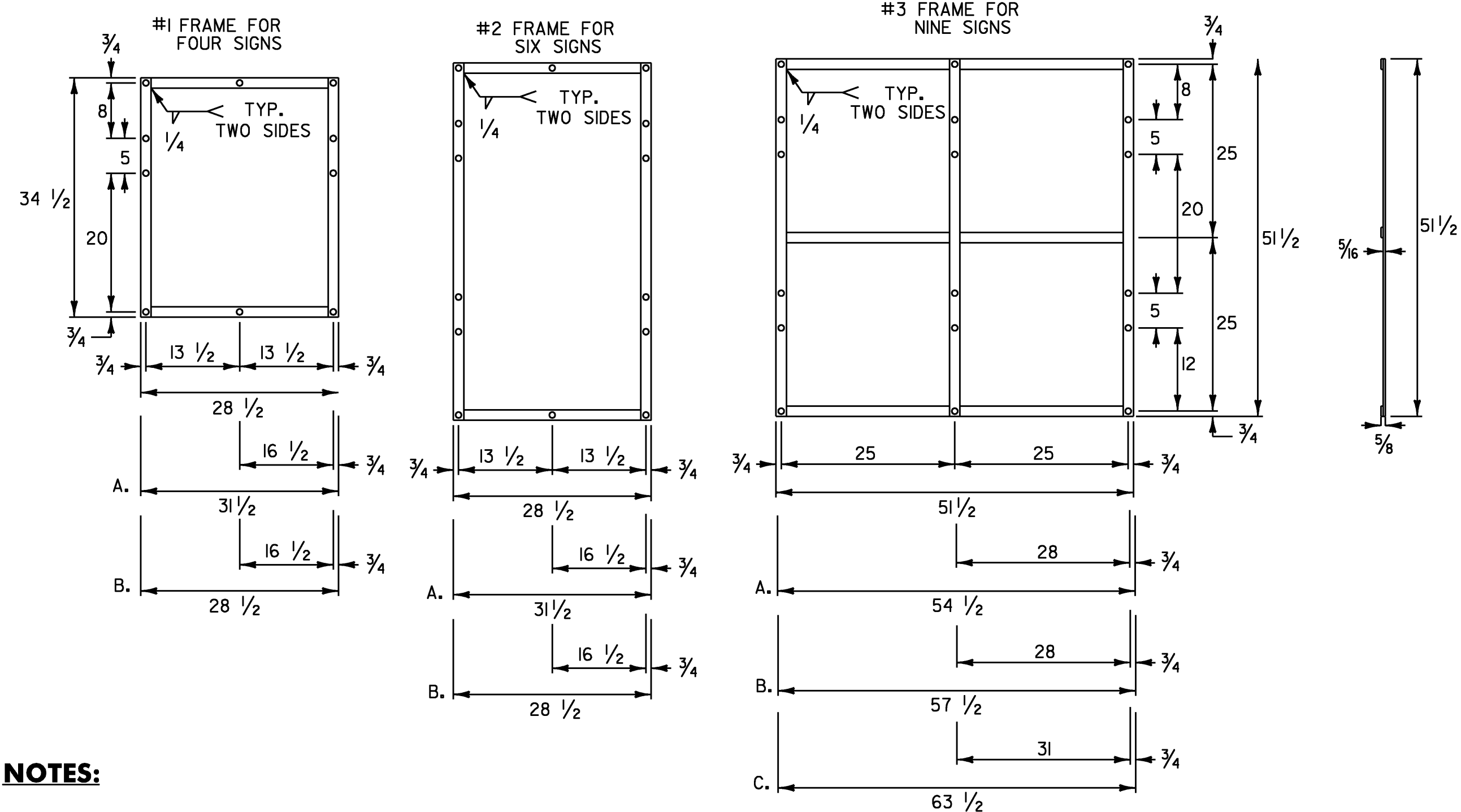


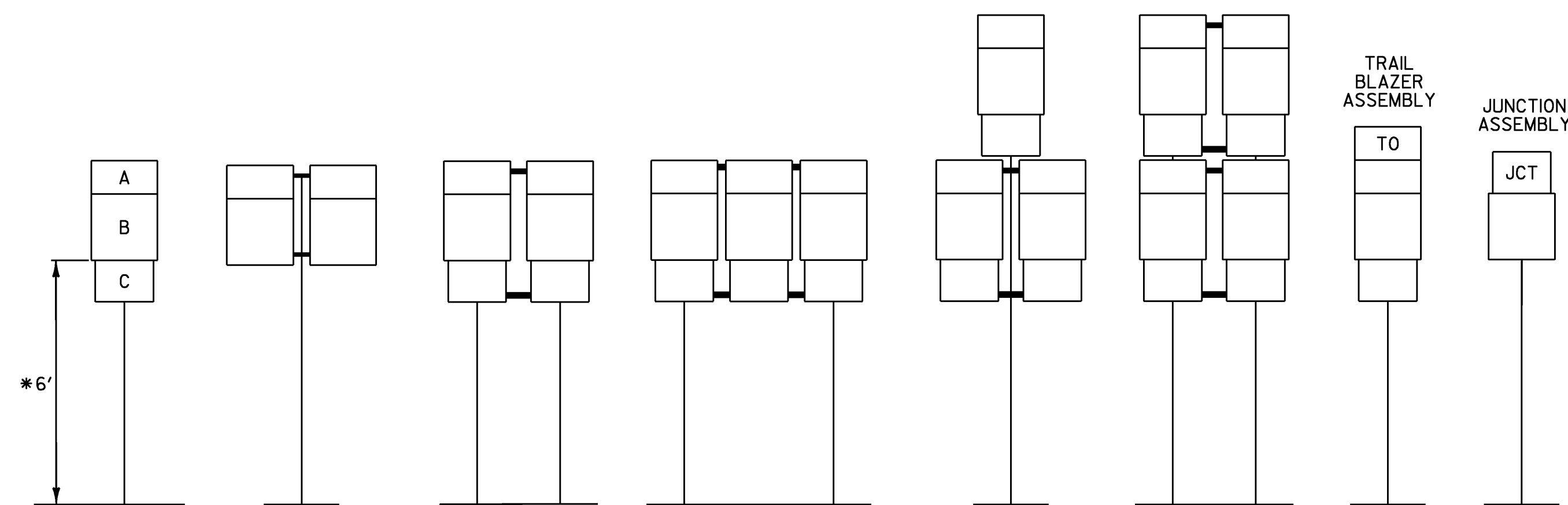
ROUTE MARKER ASSEMBLY FRAMES



NOTES:

- NOTES FOR #1 AND #2 FRAME:
 - A. WITH ONE 30 INCH THREE DIGIT SIGN
 - B. WITH TWO 30 INCH THREE DIGIT SIGNS
- NOTES FOR #3 FRAME:
 - A. WITH ONE 30 INCH THREE DIGIT SIGN IN AN OUTSIDE POSITION.
 - B. WITH ONE 30 INCH THREE DIGIT SIGN IN THE CENTER POSITION OR TWO SUCH SIGNS IN THE OUTSIDE POSITIONS.
 - C. WITH THREE 30 INCH THREE DIGIT SIGNS.
- ALL HOLES SHALL BE 3/16 INCH DIAMETER. FOR OTHER SIGN COMBINATIONS, THAN ABOVE, THE FRAME DIMENSIONS AND HOLE SPACING SHALL BE MODIFIED AS NECESSARY. THE FRAME SHALL BE PAINTED WITH ONE COAT OF PRIMER AND A SECOND COAT OF BLACK PAINT. THE PAINT SHALL BE OF THE TYPE USED ON EXTERIOR METAL SURFACES TO PREVENT METAL CORROSION.
- STANDARD FRAMES SHALL BE 5/16 INCH x 1 1/2 INCH WELDED A-36 STEEL.
- ALL DIMENSIONS SHOWN IN INCHES UNLESS OTHERWISE NOTED.

STANDARD MOUNTING OF ROUTE MARKER ASSEMBLIES



- A - CARDINAL DIRECTION MARKER
- B - ROUTE NUMBER
- C - ADVANCE TURN ARROW OR DIRECTIONAL ARROW

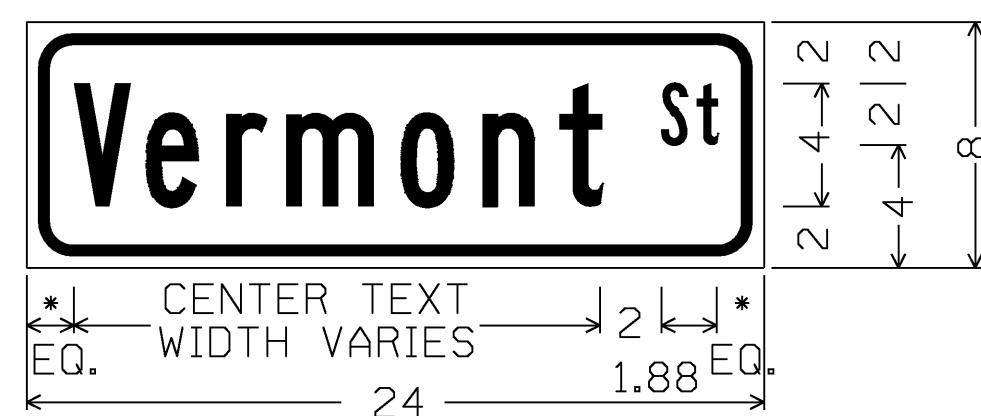
* WHERE PARKING OR PEDESTRIAN TRAFFIC WILL OCCUR IN THE IMMEDIATE VICINITY OF THESE SIGNS MINIMUM VERTICAL CLEARANCE SHALL BE INCREASED TO SEVEN FEET

INSTALLATION SEQUENCE:

IN MULTIPLE HORIZONTAL MOUNTINGS PLACE A ROUTE MARKER ASSEMBLY INDICATING A LEFT TURN ON THE LEFT SIDE OF THE ASSEMBLY; RIGHT TURN ON THE RIGHT SIDE. FOR VERTICALLY STACKED MOUNTINGS PLACE THE STRAIGHT THROUGH MOVE INDICATION ON TOP, THE LEFT OR RIGHT TURNS AS APPROPRIATE BENEATH.

NOTES:

- ALL DIMENSIONS SHOWN IN INCHES UNLESS OTHERWISE NOTED.
- VERTICAL FRAME MEMBERS SHALL LINE UP WITH SIGN POST ON WHICH THEY ARE MOUNTED.



1.5" RADIUS, 0.375" BORDER, 0.375" INDENT
 COLORS: LEGEND - BLACK
 BACKGROUND - YELLOW
 TEXT STYLE: B

* LATERAL SPACING TO OUTSIDE OF PANEL SHALL BE A MINIMUM OF 1.5"

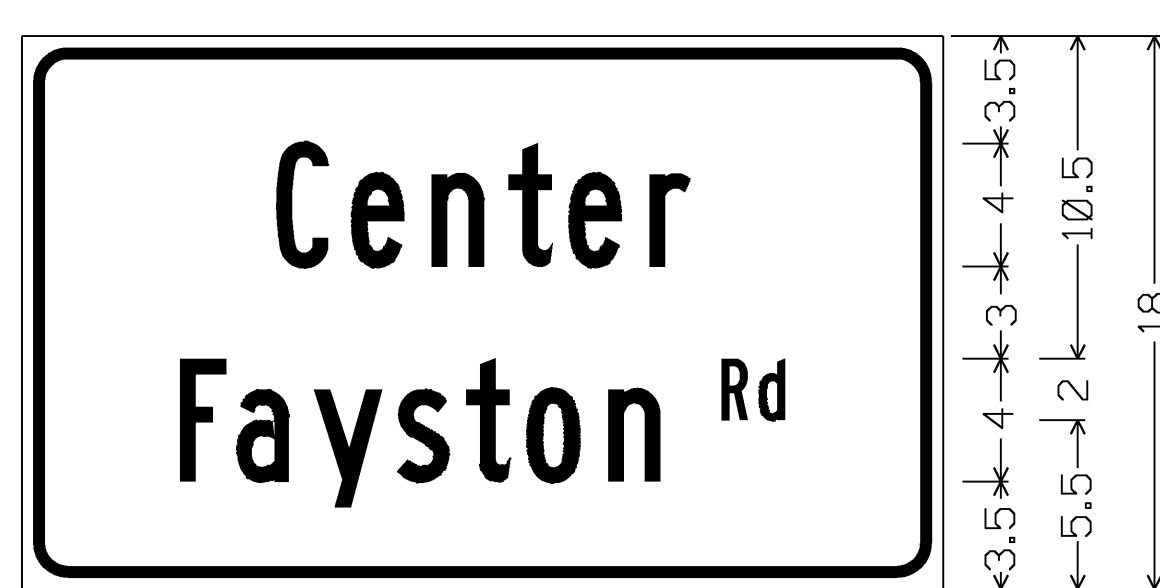
W16-8



1.5" RADIUS, 0.375" BORDER, 0.375" INDENT
 COLORS: LEGEND - BLACK
 BACKGROUND - YELLOW
 TEXT STYLE: B

* LATERAL SPACING TO OUTSIDE OF PANEL SHALL BE A MINIMUM OF 1.5"

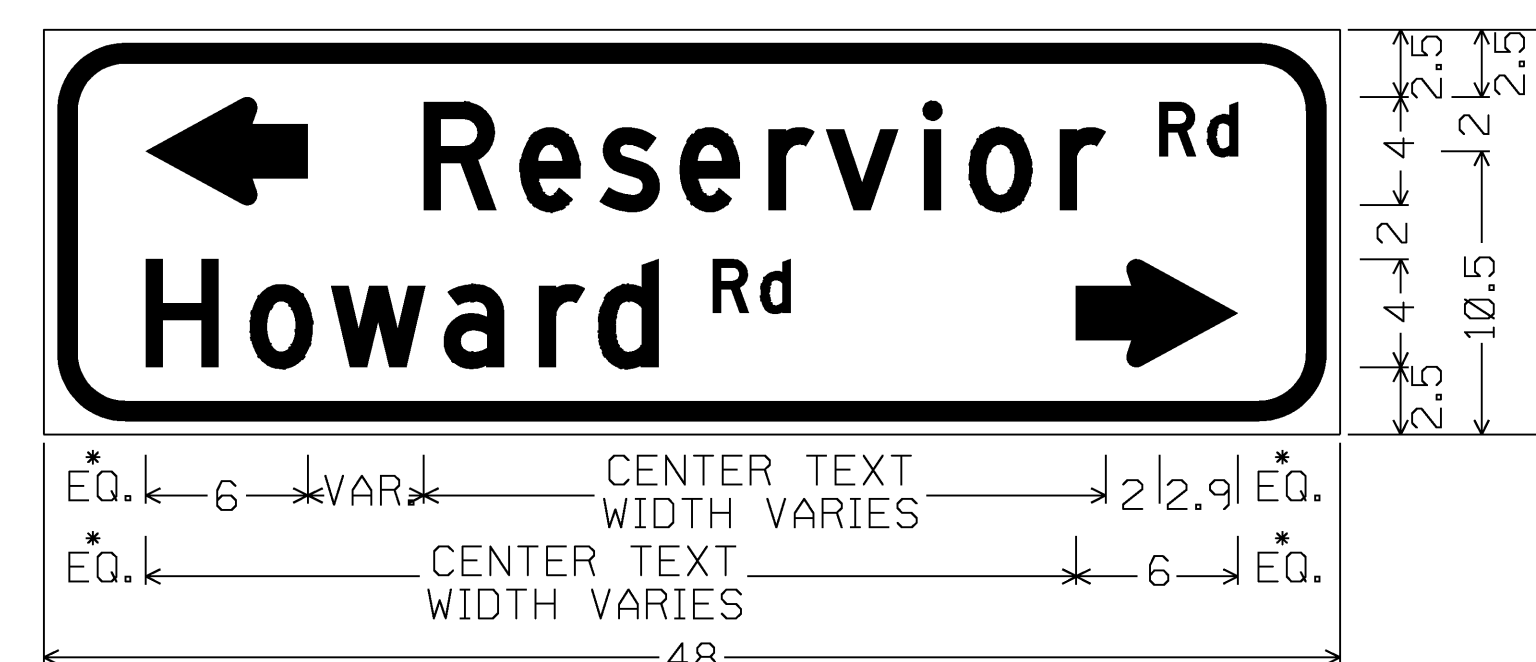
W16-8



1.5" RADIUS, 0.375" BORDER, 0.375" INDENT
 COLORS: LEGEND - BLACK
 BACKGROUND - YELLOW
 TEXT STYLE: B

* LATERAL SPACING TO OUTSIDE OF PANEL SHALL BE A MINIMUM OF 1.5"

W16-8



3" RADIUS, 0.75" BORDER, 0.50" INDENT
 COLORS: LEGEND - BLACK
 BACKGROUND - YELLOW
 TEXT STYLE: D; STANDARD ARROW CUSTOM 6" WIDE X 4" HIGH

* LATERAL SPACING TO OUTSIDE OF PANEL SHALL BE A MINIMUM OF 3"

W16-8a

PROJECT NAME: HARTFORD - EAST MONTPELIER
 PROJECT NUMBER: STPG SIGN (21)

FILE NAME: 09c024_TS.DGN PLOT DATE: 11-JUN-2009
 PROJECT LEADER: N. AVERY DRAWN BY: N. AVERY
 DESIGNED BY: N. AVERY CHECKED BY: A. GAMBLE
 GUIDE SIGN ASSEMBLY SHEET 7 OF 162