

**LIST OF MAJOR EQUIPMENT**

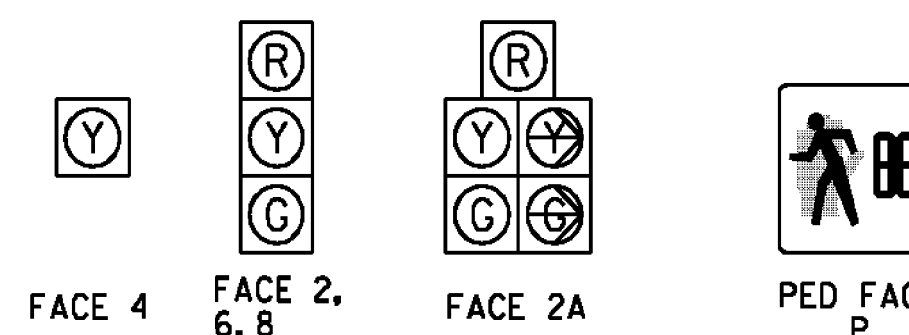
EQUIPMENT ITEM 678.15	QUANTITY
ECONOLITE TRAFFIC SIGNAL CONTROLLER	1
ECONOLITE "M" POLE MOUNTED CONTROLLER CABINET PAINTED FLAT BLACK WITH ANCILLARY CONTROL EQUIPMENT	1
FLAT BLACK PAINTED STEEL STRAIN POLE WITH 8 FOOT LIGHTING BRACKET ARM	2
FLAT BLACK PAINTED STEEL STRAIN POLE	1
CLASS II WOOD POLES FOR PEDESTRIAN EQUIPMENT	1
ONE WAY, 3-SECTION, 12-INCH POLYCARBONATE SPAN WIRE MOUNTED LED TRAFFIC SIGNAL HEADS WITH TUNNEL VISORS AND LOUVERED BACKPLATES WITH ALL PIECES PAINTED FLAT BLACK (SEE NOTE)	5
ONE WAY, 5-SECTION, 12-INCH POLYCARBONATE SPAN WIRE MOUNTED LED TRAFFIC SIGNAL HEADS WITH TUNNEL VISORS AND LOUVERED BACKPLATES WITH ALL PIECES PAINTED FLAT BLACK (SEE NOTE)	1
ONE WAY, 1-SECTION, 12-INCH POLYCARBONATE SPAN WIRE MOUNTED LED TRAFFIC SIGNAL HEADS WITH TUNNEL VISORS AND LOUVERED BACKPLATES WITH ALL PIECES PAINTED FLAT BLACK	2
POLE MOUNTED 16-INCH LED COUNTDOWN PEDESTRIAN SIGNAL HEADS	6
VTRANS SPEC ACCESSIBLE PEDESTRIAN PUSH BUTTONS WITH RIO-3a TYPE SIGN ASSEMBLY AND AUDIBLE INDICATORS	6
SPAN WIRE DISCONNECT BRACKETS	8
EMERGENCY VEHICLE PREEMPTION RECEIVER	3
EMERGENCY VEHICLE PREEMPTION 4-CHANNEL PHASE SELECTOR AND CHASSIS	1
OPTICAL DETECTION SENSOR WITH DETECTOR CABLES	3
EMERGENCY VEHICLE PREEMPTION STROBE	3

**DETECTION SCHEDULE**

INCIDENTAL TO ITEM 678.15						
OPTICAL VIDEO DETECTORS						
LOOP NO.	LANE	CALL Ø	SIZE	TYPE & NO. TURNS	DELAY OR PRESENCE	SLOT CHANNEL
△	EBTH	2	6X40	OPTICAL	PRESENCE	4 1
△	EBRT	2	6X40	OPTICAL	5 SEC DELAY	4 2
△	WBTH	6	6X40	OPTICAL	PRESENCE	2 1
△	NBLT	8	6X40	OPTICAL	PRESENCE	8 1
△	NBRT	8	6X40	OPTICAL	PRESENCE	8 2

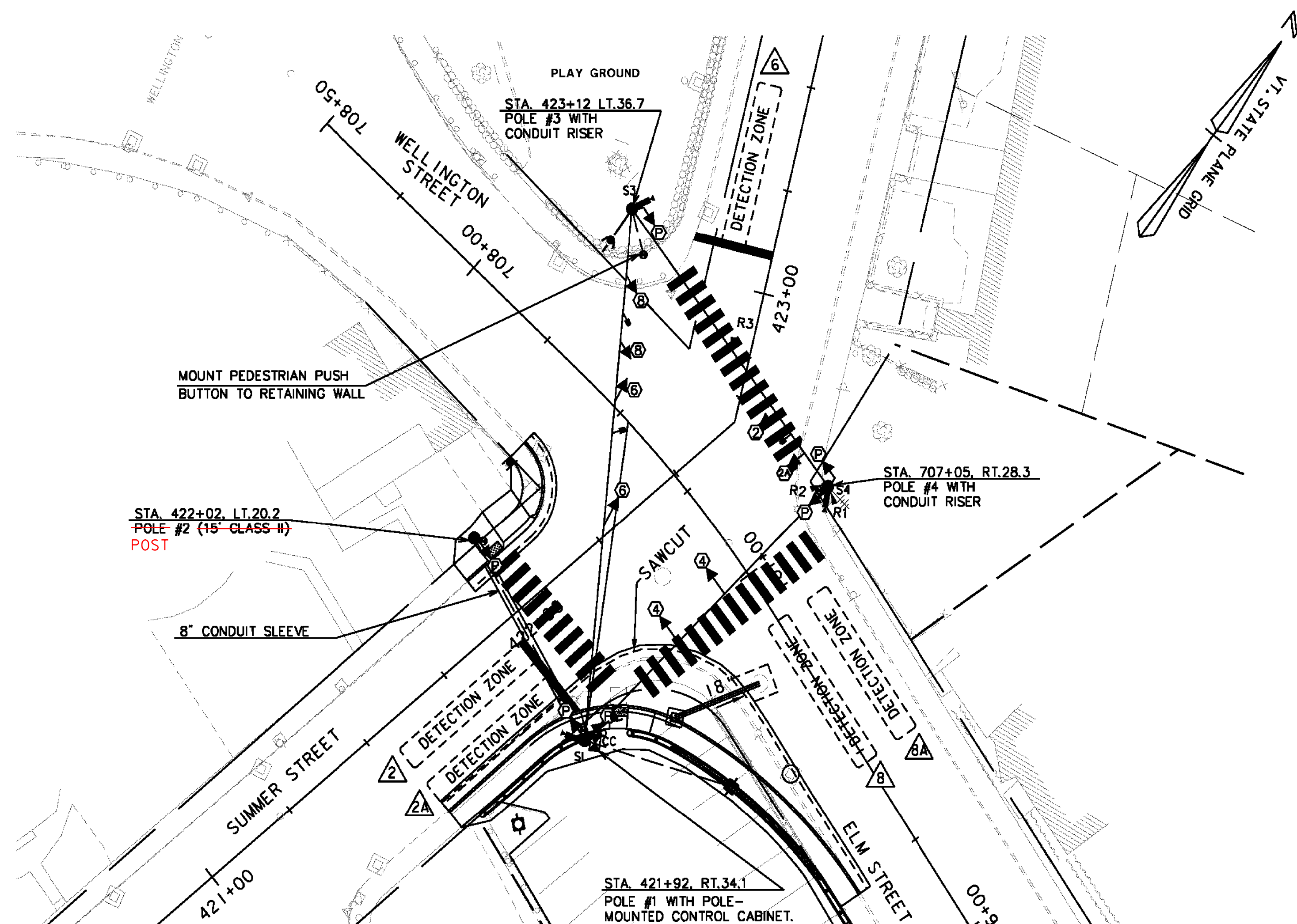
**SIGNAL FACE ARRANGEMENT**

(12" LED LENSES W/ 5" BACKPLATES)



NOTE: INTERSECTION SHALL OPERATE IN FLASHING MODE WITH SIGNALS 4 & 8 FLASHING YELLOW AND SIGNALS 2, 2A & 6 FLASHING RED, PEDESTRIAN SIGNALS AND PUSH BUTTONS SHALL BE COVERED

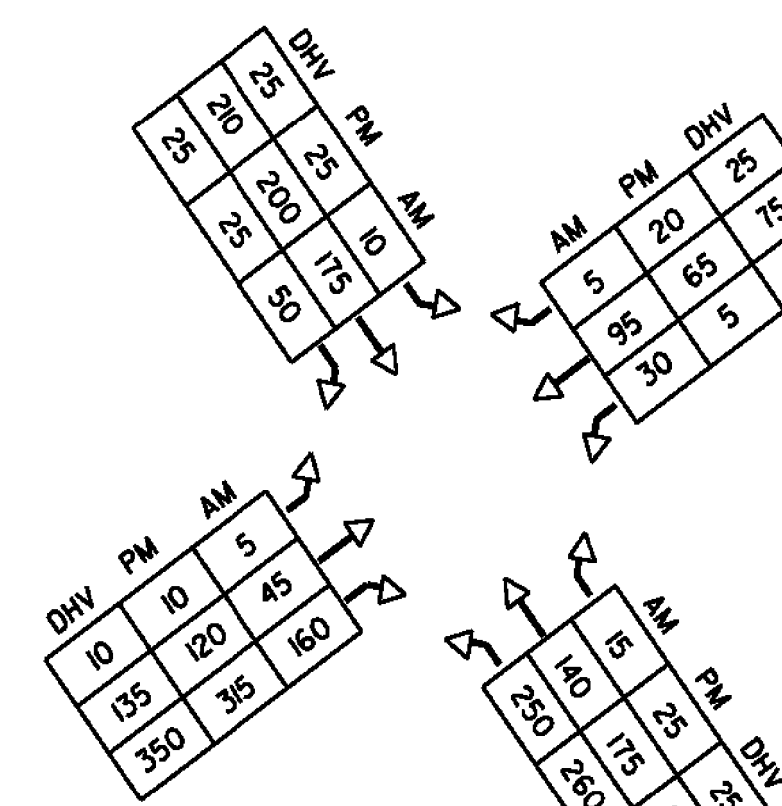
CONTRACTOR MAY ELECT TO FURNISH AND INSTALL SALVAGED SIGNAL HEADS FOR FACES 2, 2A, 6, AND 8.



**WIRED CONDUIT (PVC) AND ELECTRICAL CONDUIT SLEEVE SCHEDULE**

ITEM NUMBER	678.23		678.30		DESCRIPTION
	WIRED CONDUIT	CONDUIT SLEEVE	WIRED CONDUIT	CONDUIT SLEEVE	
FROM/TO	2"	3"	6"	8"	
POWER TO CABINET					AERIAL CONNECTION
POLE #2 TO CABINET	57			43	POLE #2
POLE #3 TO PUSH BUTTON	17				
SUB-TOTALS	74			43	
ROUNDING	1			2	
TOTALS	75			45	

**2009 AVERAGE WEEKDAY TRAFFIC DATA**



**FOR DETOUR SIGNALIZATION FOR SUBSEQUENT CONSTRUCTION CONTRACT TIMING AND PHASING**

	PHASE 2+6 (DWELL)				PHASE 8				PHASE 9				FLASHING OPERATION
	%	Ø8	Ø9		%	Ø9	Ø2+6		%	Ø 2+6			
OFF PEAK REST OF DAY	2				2				2				
VEHICLE MINIMUM	8	4	2	4	10	4	2	4	2	2	4	2	
VEHICLE MAXIMUM	25	4	2	4	65	4	2	4	2	2	4	2	
MAXIMUM2	35	4	2	4	70	4	2	4	2	2	4	2	
PED ACT													
AM PEAK 7-9 AM	2				2				2				
VEHICLE MINIMUM	8	4	2	4	10	4	2	4	2	2	4	2	
VEHICLE MAXIMUM	30	4	2	4	70	4	2	4	2	2	4	2	
MAXIMUM2	45	4	2	4	80	4	2	4	2	2	4	2	
PED ACT													
PM PEAK 3-6 PM	2				2				2				
VEHICLE MINIMUM	8	4	2	4	10	4	2	4	2	2	4	2	
VEHICLE MAXIMUM	35	4	2	4	60	4	2	4	2	2	4	2	
MAXIMUM2	45	4	2	4	70	4	2	4	2	2	4	2	
PED ACT													
FACE 2	G	Y	R	Y	R	R	R	R	R	R	R	R	FR
FACE 2A	G	Y	R	Y	R	R	R	R	R	R	R	R	FR
FACE 6	G	Y	R	Y	R	R	R	R	R	R	R	R	FR
FACE 8	R	R	R	R	R	G	Y	R	R	R	R	R	FR
PED (N-S)	D	W	D	W	D	W	D	W	D	W	F	D	B
PED (E-W)	D	W	D	W	D	W	D	W	D	W	F	D	B

W = WALK, FD = FLASHING DON'T WALK, DW = DON'T WALK, B = BLANK, FR = FLASHING RED, FY = FLASHING YELLOW

1. FACE NUMBERS ARE BASED ON NEMA PHASES

2. EASTBOUND RIGHT-TURN SHALL OPERATE UNDER PROTECTED/PERMISSIVE RIGHT-TURN PHASING.

**LEGEND**

NEW	LEGEND
CC	CONTROLLER CABINET
→	SIGNAL HEAD
---	CONDUIT
○	OPTICAL DETECTION ZONE
⊕	PEDESTAL POST
⊕	STANCHION
-S	SPARE SWEEP
→	EMERGENCY VEHICLE PREEMPTION RECEIVER
→	EMERGENCY VEHICLE PREEMPTION STROBE
—	PROPOSED MAST ARM
●	PEDESTRIAN PUSH BUTTON
■	PULL BOX
—	OVERHEAD SIGN
—	OPTICAL DETECTION
—	EXISTING MAST ARM

**SUMMER ST AND ELM ST/WELLINGTON ST**

PROJECT NAME: BARRE CITY  
 PROJECT NUMBER: FEGC F 026-1(34) C/1

FILE NAME: z09B240\_TSP55.dgn PLOT DATE: 4/5/2010  
 PROJECT LEADER: G. BAKOS DRAWN BY: DMP / JAR  
 DESIGNED BY: DMP / MDS CHECKED BY:  
 TRAFFIC SIGNAL PLAN 5, SHEET 1 SHEET 67 OF 95

DATUM  
 VERTICAL: NAVD 1929  
 HORIZONTAL: NAD 27

