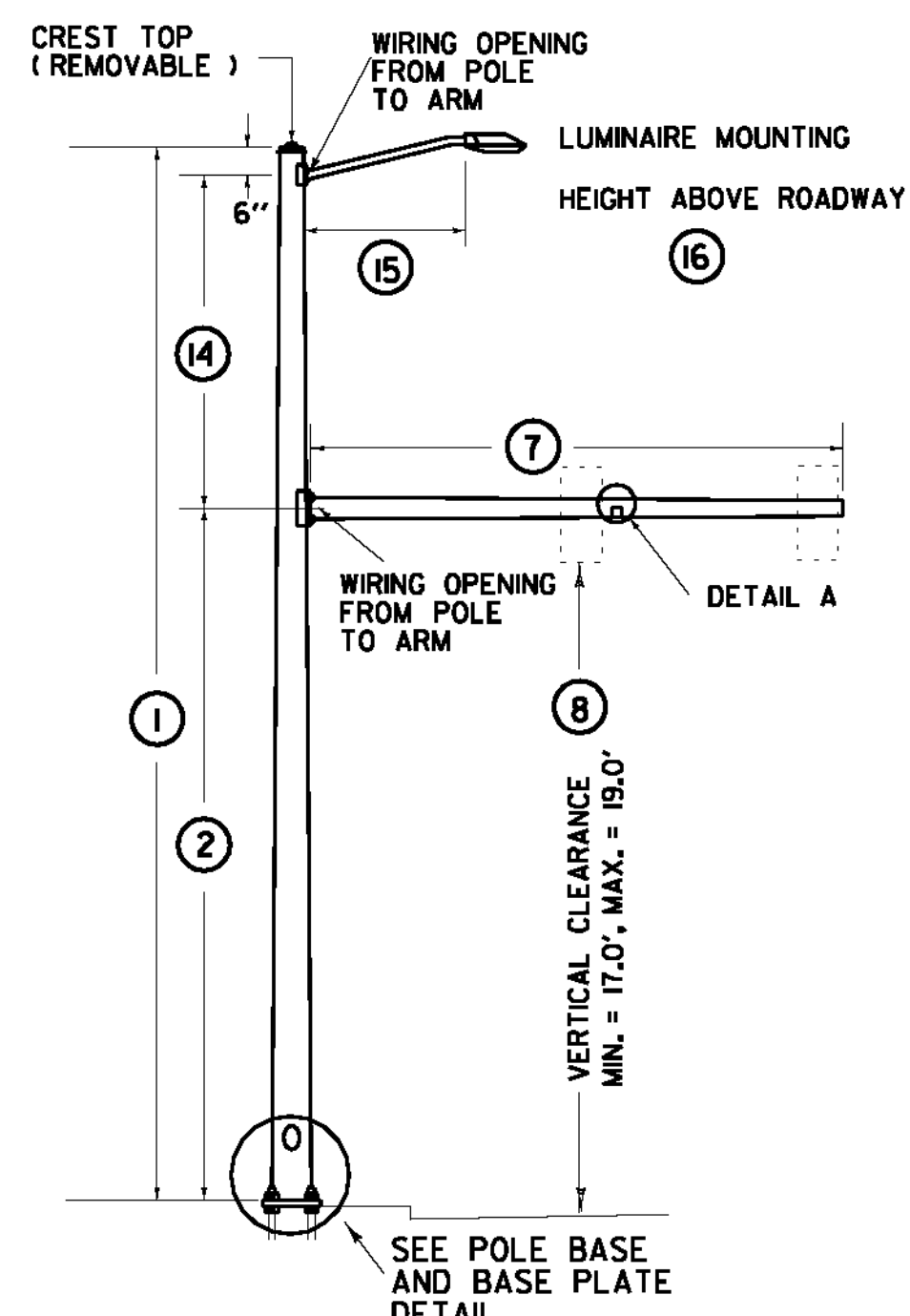
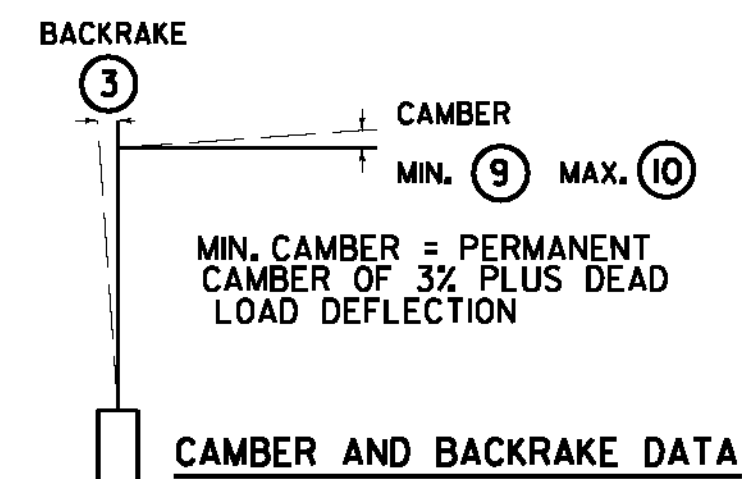


TYPE A

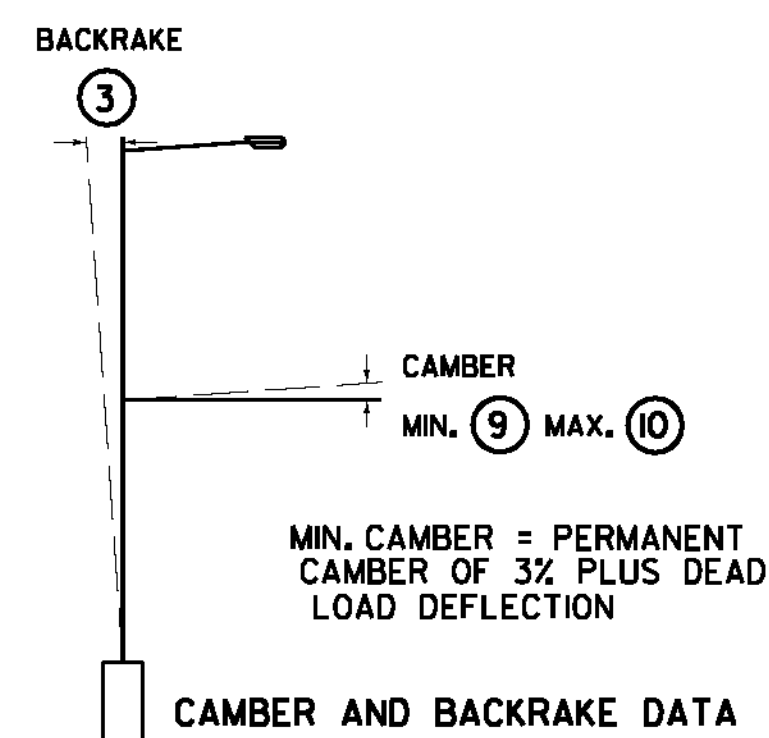


TYPE B

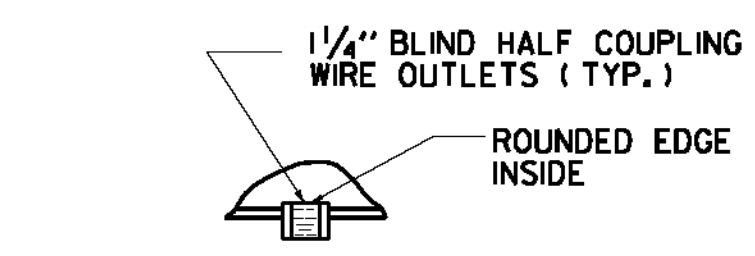


CAMBER AND BACKRAKE DATA

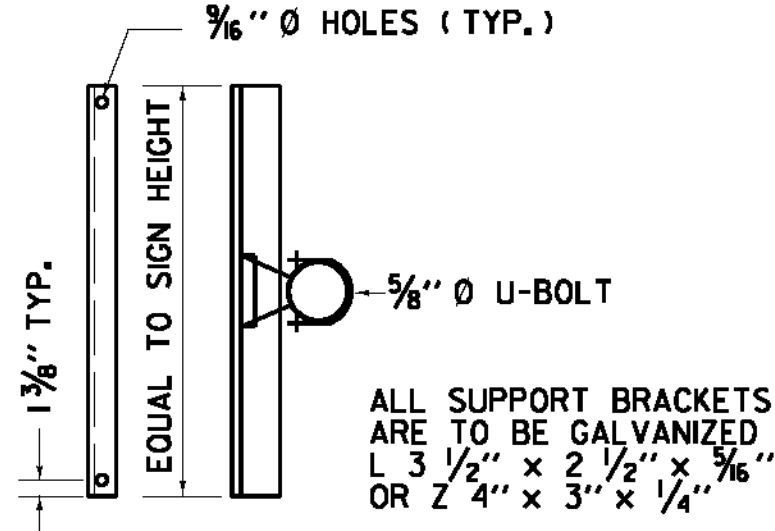
- POLE BASE DIAMETER (4)
- POLE GAUGE (5)
- POLE TAPER RATE (6)
- ARM DIAMETER (11)
- ARM GAUGE (12)
- ARM TAPER RATE (13)



CAMBER AND BACKRAKE DATA

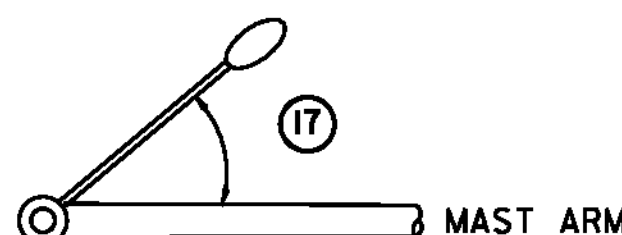


DETAIL A

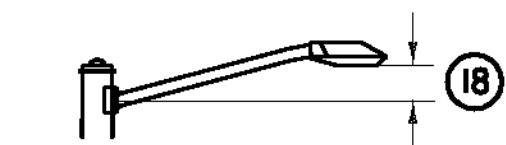


SIGN BRACKET DETAILS

SIGN BRACKET DETAILS

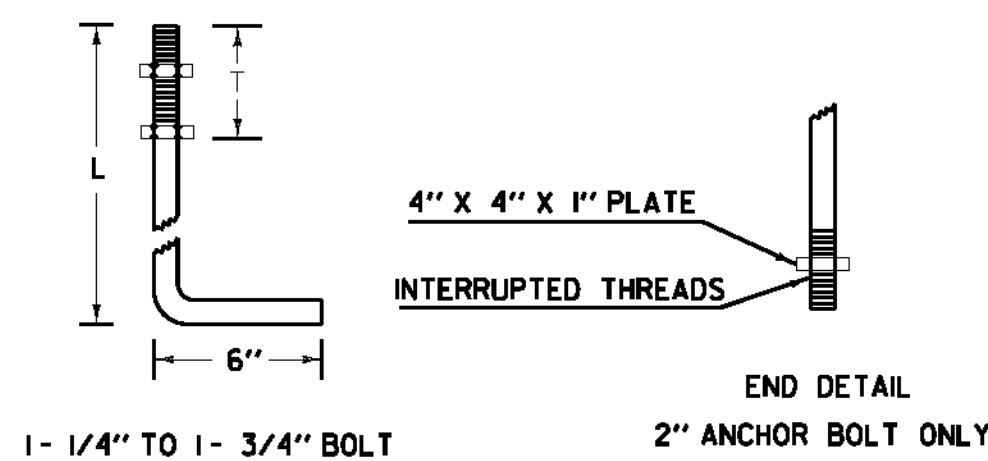


LUMINAIRE ORIENTATION

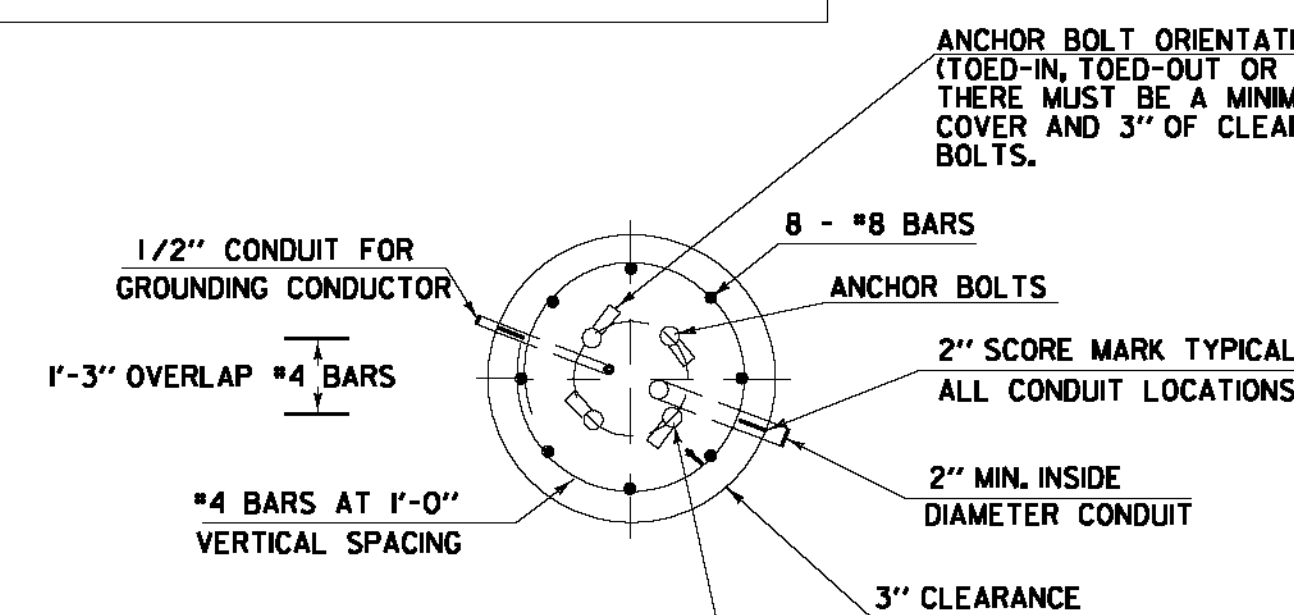


LUMINAIRE ARM RISE

ANCHOR BOLT DETAIL		
SIZE	L (IN)	T (IN)
1- 1/4" X 48"	42	8
1- 1/2" X 60"	54	9
1- 3/4" X 90"	84	9
2" X 96"	96	9



ANCHOR BOLT DETAIL



SECTION

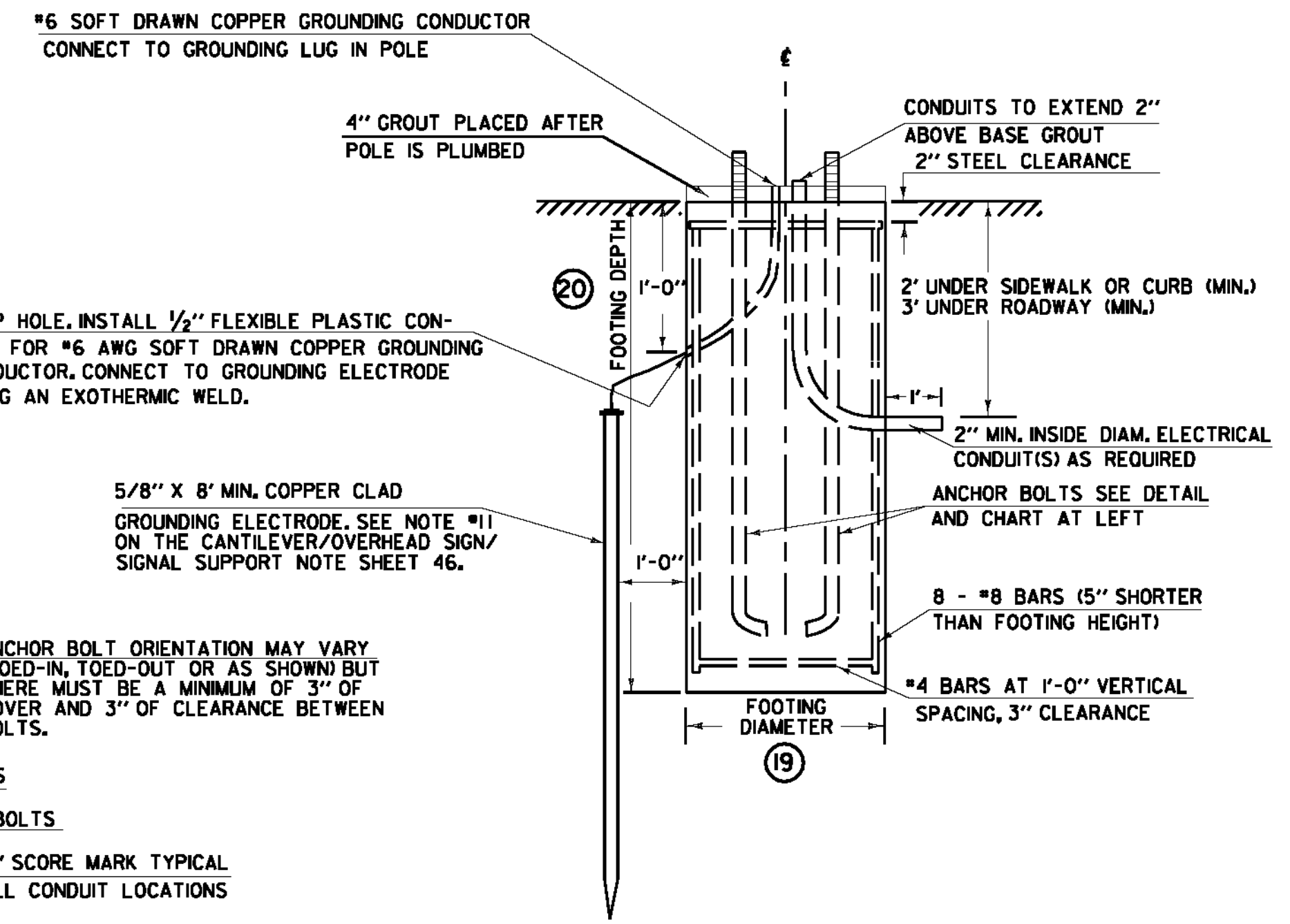
CANTILEVER FOOTING DETAIL

(SPREAD FOOTINGS OR PILES ARE OPTIONAL)

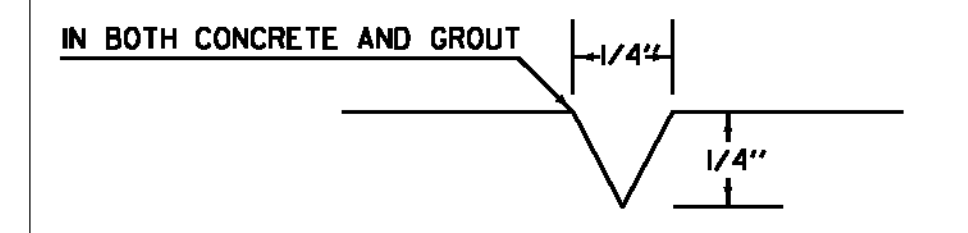
SEE CANTILEVER / OVERHEAD SIGN / SIGNAL SUPPORTS NOTE SHEET FOR ADDITIONAL INFORMATION (SHEET 46)
 © SEE SHEET 61 FOR POLE INFORMATION

SEE SHEET 62 FOR CROSS SECTIONS

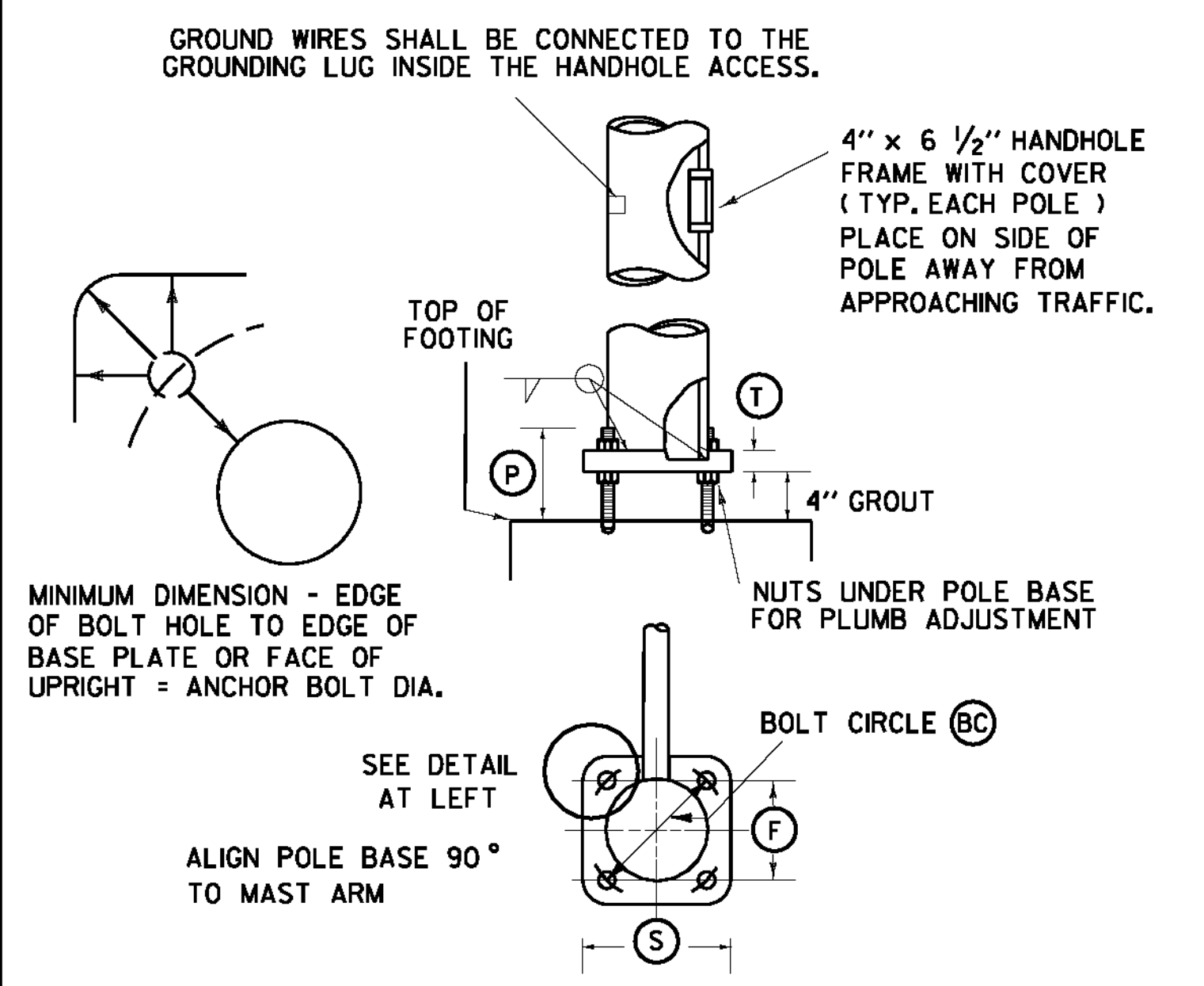
STRUCTURE DIMENSIONS (IN FEET)																											
POLE	TYPE	POLE DATA					ARM DATA						LIGHTING DATA				FOOTING DATA		BASE PLATE / BOLT DATA								
		(1)	(2)	(3)	(4)	(5)	(7)	(8)	(9)	(10)	(11)	(12)	(13)	(14)	(15)	(16)	(17)	(18)	(19)	(20)	(BC)	(F)	(S)	(T)	(P)	ANCHOR BOLT SIZE	
2	B	33	20				30	18.7						12.5	8	0	2										
1														12.5	8	0-A	2										



ELEVATION



2\"/>



POLE BASE AND BASE PLATE DETAIL

NOTE:
 DETAILS
 NTS

**SINGLE MAST ARM CANTILEVER / FOOTING DETAIL SHEET
 FOR TRAFFIC SIGNAL PLAN 3 (FEGC F 026-1(34) C / 1)**

PREPARED BY JAR DATE 4/5/2010
 CHECKED BY CMB DATE 4/5/2010
 DESIGN SUPERVISOR DATE
 PROJ. BARRE CITY -
 NORTH MAIN ST.
 TRAFFIC SHEET NO. 3 OF 5
 SHEET 60 OF 95 SHEETS

LAST REVISED 8/15/95