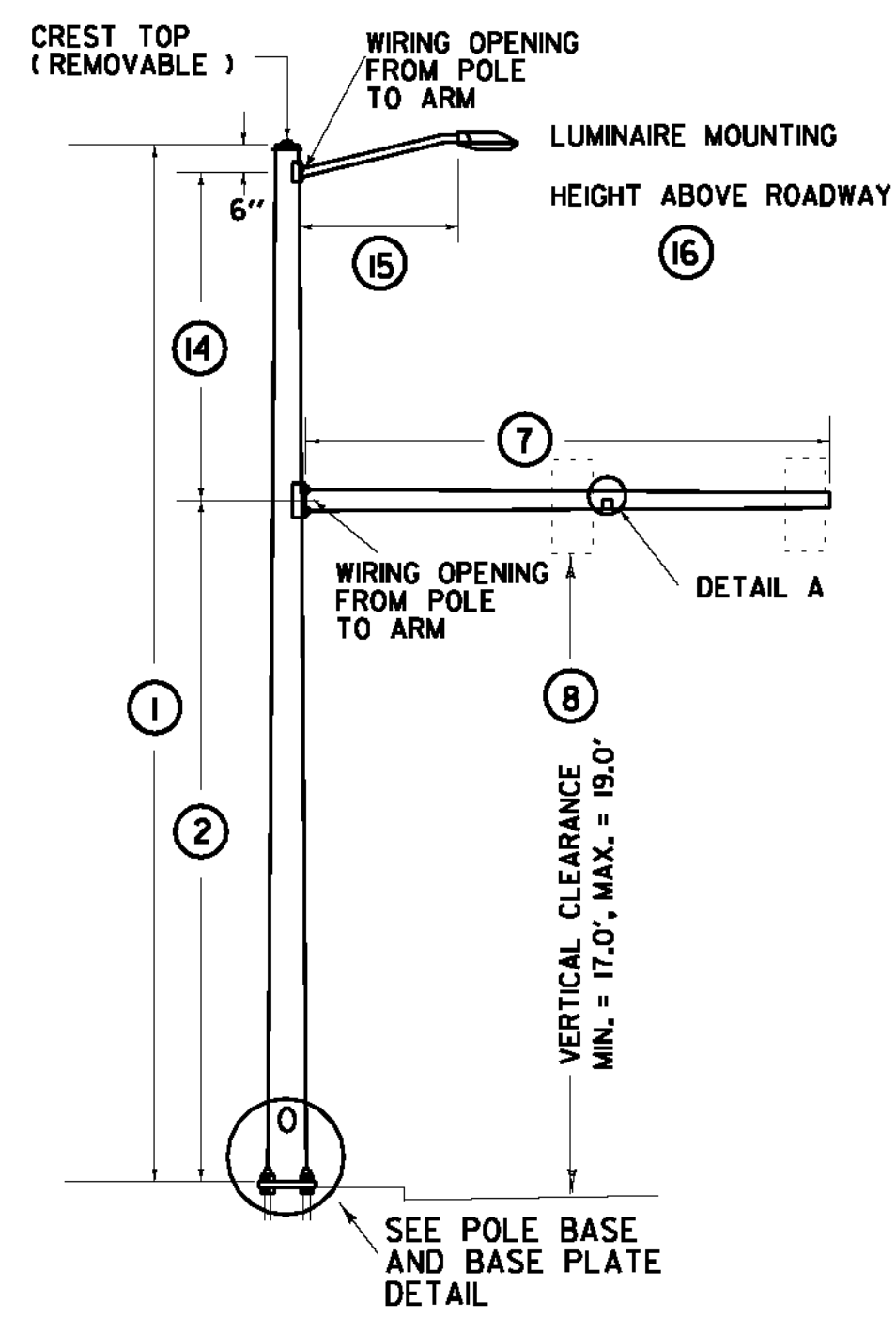
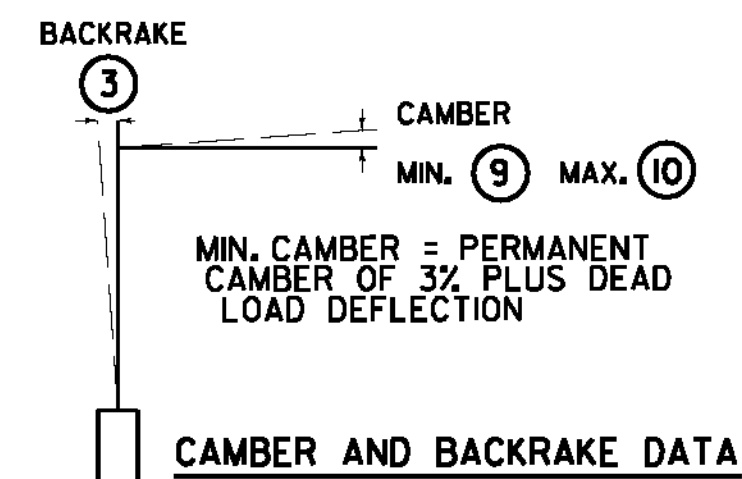


**TYPE A**

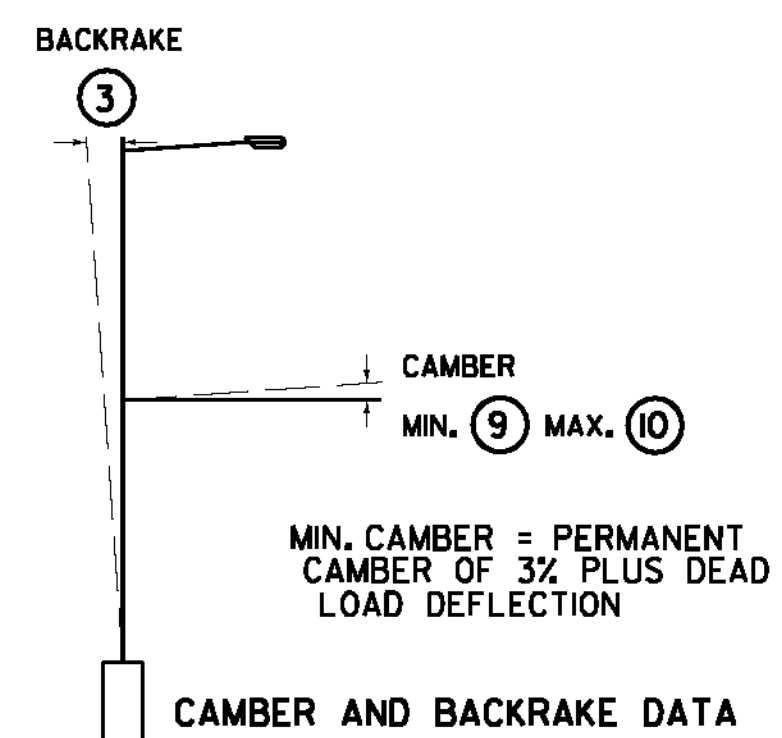


**TYPE B**

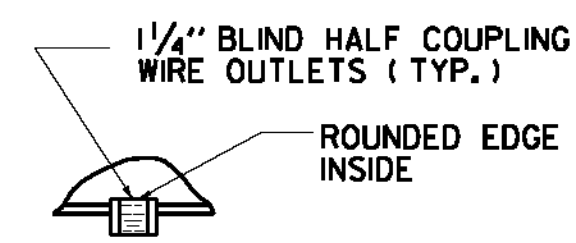


**CAMBER AND BACKRAKE DATA**

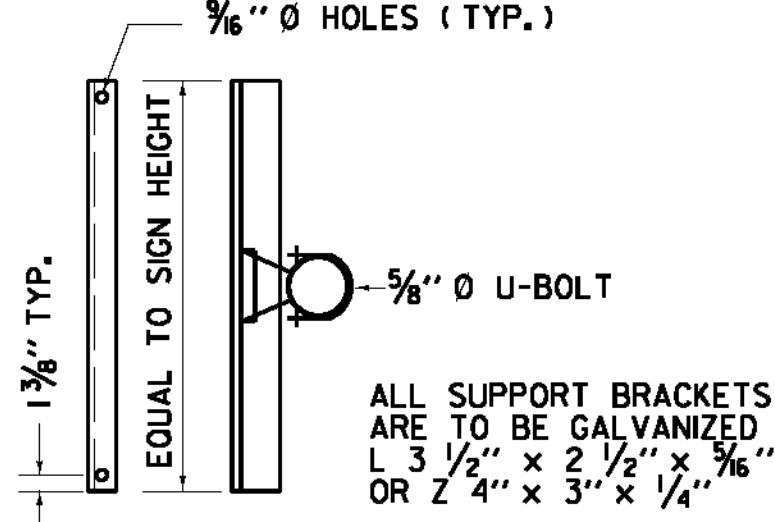
- POLE BASE DIAMETER (4)
- POLE GAUGE (5)
- POLE TAPER RATE (6)
- ARM DIAMETER (11)
- ARM GAUGE (12)
- ARM TAPER RATE (13)



**CAMBER AND BACKRAKE DATA**

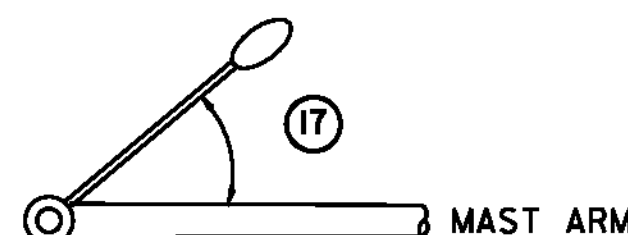


**DETAIL A**

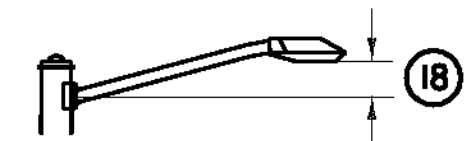


SIGN ON SINGLE MAST ARM

**SIGN BRACKET DETAILS**

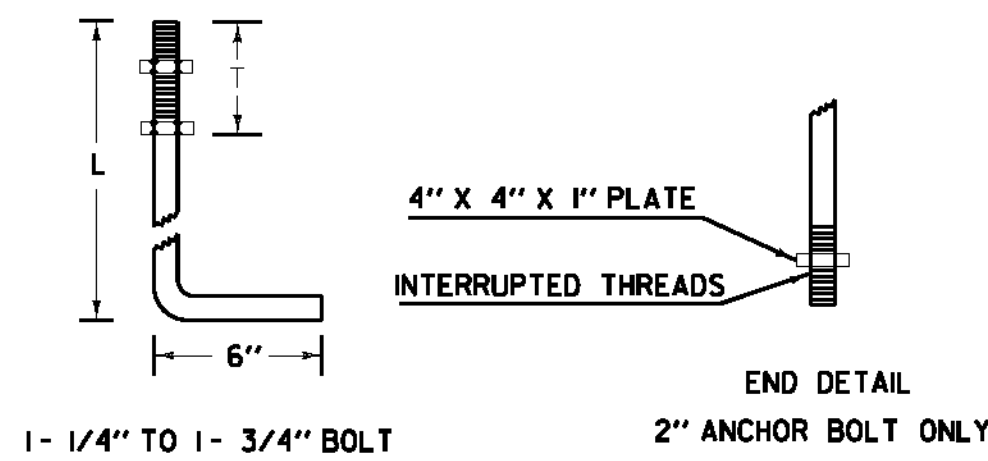


**LUMINAIRE ORIENTATION**

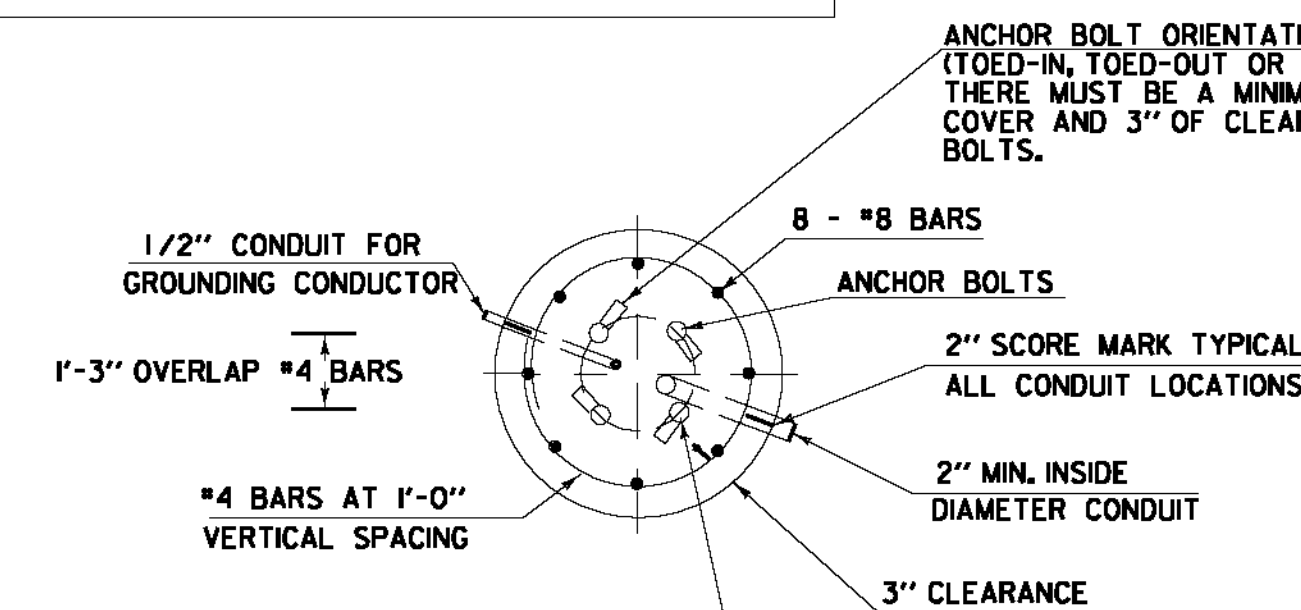


**LUMINAIRE ARM RISE**

ANCHOR BOLT DETAIL		
SIZE	L (IN)	T (IN)
1 - 1/4" X 48"	42	8
1 - 1/2" X 60"	54	9
1 - 3/4" X 90"	84	9
2" X 96"	96	9



**ANCHOR BOLT DETAIL**



**SECTION**

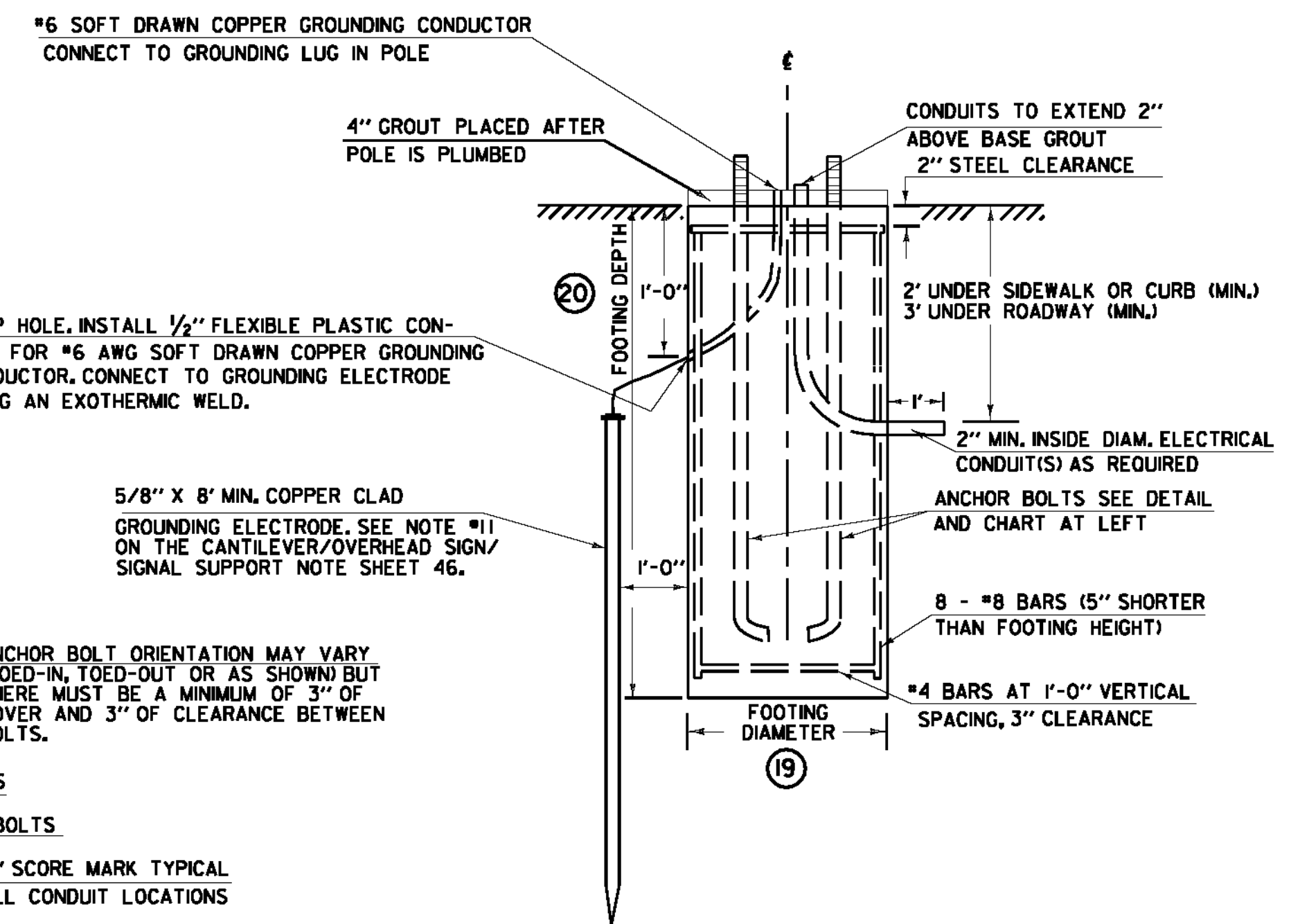
**CANTILEVER FOOTING DETAIL**

(SPREAD FOOTINGS OR PILES ARE OPTIONAL)

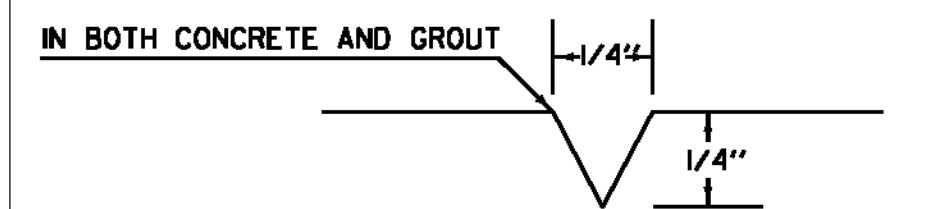
SEE CANTILEVER / OVERHEAD SIGN / SIGNAL SUPPORTS NOTE SHEET FOR ADDITIONAL INFORMATION (SHEET 46)

SEE SHEET 57 FOR CROSS SECTIONS

STRUCTURE DIMENSIONS (IN FEET)																												
POLE	TYPE	POLE DATA					ARM DATA						LIGHTING DATA				FOOTING DATA		BASE PLATE / BOLT DATA									
		1	2	3	4	5	6	7	8	9	10	11	12	13	14	15	16	17	18	19	20	BC	F	S	T	P	ANCHOR BOLT SIZE	
1	B	33	20				25	18							12.5	8	0	2										

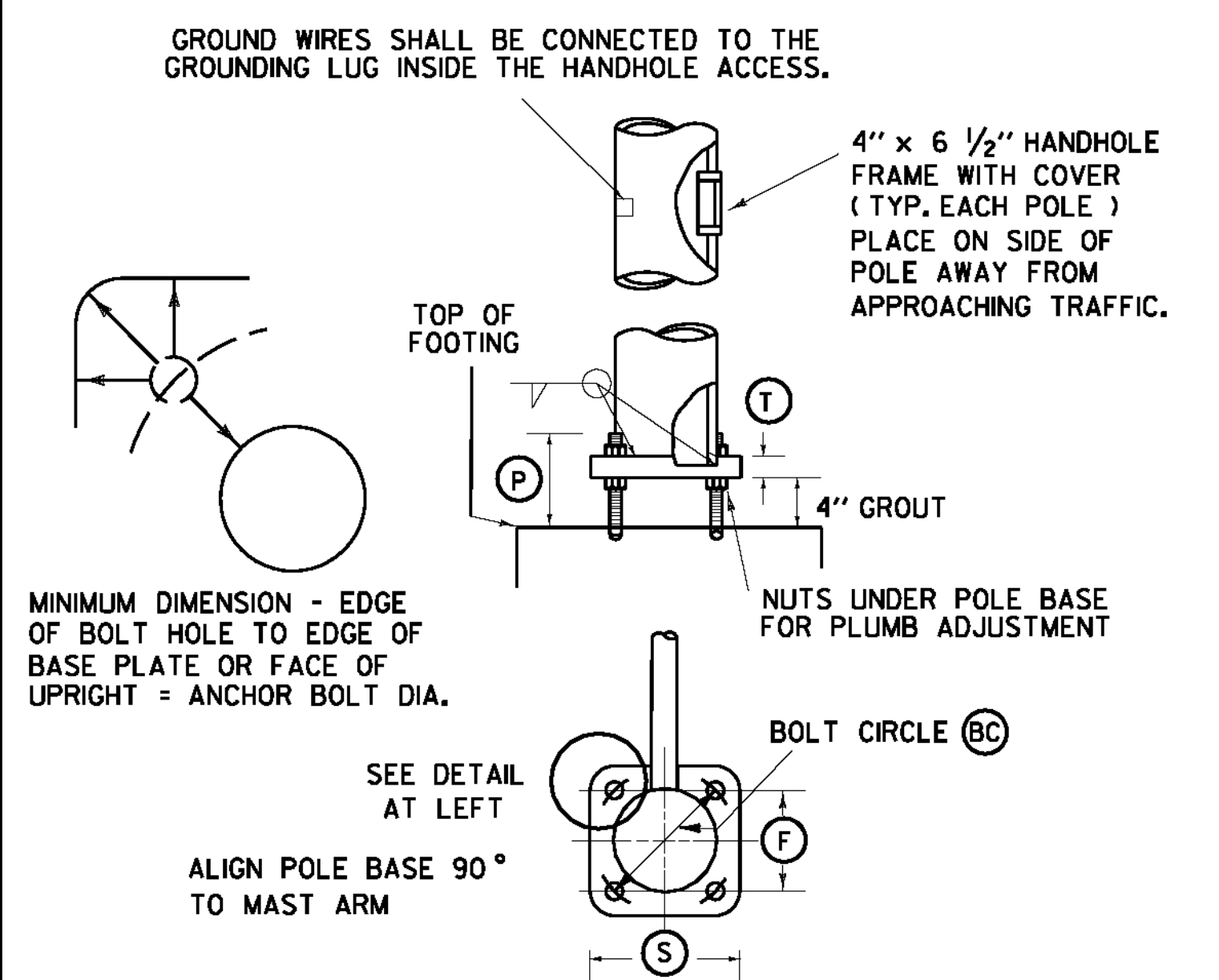


**ELEVATION**



USED FOR CONDUIT LOCATION, SEE SECTION DETAIL AT LEFT

**2\"/>**



**POLE BASE AND BASE PLATE DETAIL**

NOTE:  
DETAILS  
NTS

SINGLE MAST ARM CANTILEVER / FOOTING DETAIL SHEET  
FOR TRAFFIC SIGNAL PLANS 2 (FEGC F 026-1(34) C/1)

PREPARED BY JAR DATE 4/5/2010  
CHECKED BY CMB DATE 4/5/2010  
DESIGN SUPERVISOR DATE  
PROJ. BARRE CITY -  
NORTH MAIN ST.  
TRAFFIC SHEET NO. 3 OF 5  
SHEET 55 OF 95 SHEETS

LAST REVISED 8/15/95