

GENERAL NOTES

- ALL MATERIALS AND CONSTRUCTION SHALL CONFORM TO THE ENGINEER. ALL NEW SIGNS SHALL BE IN ACCORDANCE WITH THESE PLANS, THE CURRENT MANUAL ON UNIFORM TRAFFIC CONTROL DEVICES (MUTCD), THE STANDARD HIGHWAY SIGN BOOK (SHS) PUBLISHED BY THE FEDERAL HIGHWAY ADMINISTRATION (FHWA), AND APPLICABLE VTRANS E-SERIES STANDARDS OR AS DIRECTED BY THE ENGINEER. SIGN LOCATIONS AS SHOWN ON THE PLANS ARE APPROXIMATE. EXACT LOCATIONS TO BE DETERMINED BY THE ENGINEER IN THE FIELD.
- ALL SIGNS WITHIN THE PROJECT LIMITS ARE TO BE REPLACED UNLESS OTHERWISE NOTED OR AS DIRECTED BY THE RESIDENT ENGINEER. ALL NEW SIGNS SHALL BE IN ACCORDANCE WITH THESE PLANS, THE CURRENT MANUAL ON UNIFORM TRAFFIC CONTROL DEVICES (MUTCD 2003), THE STANDARD HIGHWAY SIGN BOOK (SHS) PUBLISHED BY THE FEDERAL HIGHWAY ADMINISTRATION (FHWA), AND APPLICABLE VTRANS E-SERIES STANDARDS OR AS DIRECTED BY THE ENGINEER. SIGN LOCATIONS AS SHOWN ON THE PLANS ARE APPROXIMATE. EXACT LOCATIONS TO BE DETERMINED BY THE ENGINEER IN THE FIELD.
- THE CONTRACTOR SHALL BE RESPONSIBLE FOR REPAIRING ANY DAMAGE TO PRIVATE OR PUBLIC PROPERTY CAUSED BY THE CONTRACTOR, AT HIS OR HER EXPENSE.
- ALL FORMED 2" SQUARE STEEL SHAPED POSTS SHALL BE FABRICATED WITH 12 GAUGE STEEL WITH A MINIMUM YIELD OF 55 KSI. NO FLANGE CHANNEL SUBSTITUTIONS WILL BE ALLOWED. SEE POST SELECTION CHART BELOW.
- ANY MILE MARKER PLAQUE WITHIN THE PROJECT LIMITS SHALL BE RETAINED UNLESS OTHERWISE NOTED.
- ALL ADVANCE STREET NAME PLAQUE SIGNS (W16-8 AND W16-8a) USED TO IDENTIFY THE NAME OF THE INTERSECTING STREETS SHALL HAVE INITIAL UPPERCASE LETTERS USED IN CONJUNCTION WITH LOWERCASE LETTERS (IE. Main St).
- EXISTING MILEMARKERS ON STATE HIGHWAYS ARE TO BE SALVAGED AND INSTALLED ON POSTS FOR NEW STOP SIGNS OR RETAINED IF ON SEPARATE POSTS OR AS DIRECTED BY THE ENGINEER. NOT ALL MILE MARKER LOCATIONS ARE DEPICTED ON THE PLANS. PAYMENT FOR ATTACHING TO NEW POSTS IS INCIDENTAL TO OTHER CONTRACT PAY ITEMS.
- EXISTING STREET NAME SIGNS ATTACHED TO SIGN POSTS TO BE REMOVED AND SALVAGED ONTO THE NEW POST. AN ESTIMATED QUANTITY HAS BEEN ADDED TO PAU ITEM NUMBER 675.60 ERRECTING SALVAGED SIGNS FOR THE WORK TO BE COMPLETED.

INDEX OF SHEETS

|           |                                              |
|-----------|----------------------------------------------|
| 1         | TITLE SHEET                                  |
| 2         | GENERAL NOTES                                |
| 3         | QUANTITY SHEET                               |
| 4         | GUIDE SIGN                                   |
| 5 - 6     | SIGN DETAILS                                 |
| 7         | GUIDE SIGN ASSEMBLY                          |
| 8 - 11    | MANCHESTER TRAFFIC SIGN SUMMARY SHEETS 1-4   |
| 12 - 28   | WINHALL TRAFFIC SIGN SUMMARY SHEETS 1-17     |
| 29 - 39   | PERU TRAFFIC SIGN SUMMARY SHEETS 1-11        |
| 40 - 41   | LANDGROVE TRAFFIC SIGN SUMMARY SHEETS 1-2    |
| 42 - 70   | LONDONDERRY TRAFFIC SIGN SUMMARY SHEETS 1-29 |
| 71        | WINDHAM TRAFFIC SIGN SUMMARY SHEET 1         |
| 72 - 76   | ANDOVER TRAFFIC SIGN SUMMARY SHEETS 1-5      |
| 77 - 98   | CHESTER TRAFFIC SIGN SUMMARY SHEETS 1-22     |
| 99 - 112  | SPRINGFIELD TRAFFIC SIGN SUMMARY SHEETS 1-14 |
| 113       | TOWN TOTAL SIGN SUMMARY SHEET                |
| 114 - 115 | TRAFFIC CONTROL SHEETS                       |

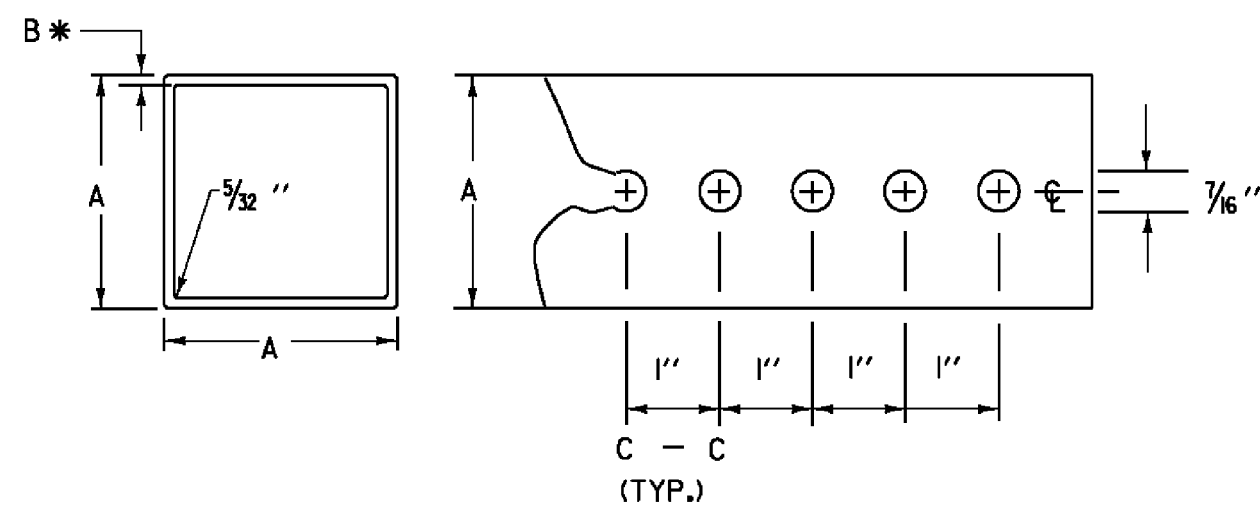
STANDARDS

|        |                                                |            |
|--------|------------------------------------------------|------------|
| E-120  | STANDARD SIGN PLACEMENT EXPRESSWAY 7 FREEWAY   | 08/08/1995 |
| E-121  | STANDARD SIGN PLACEMENT CONVENTIONAL ROAD      | 08/08/1995 |
| E-123  | GUIDE SIGN PLACEMENT                           | 03/16/2004 |
| E-127  | ROUTE MARKINGS AT RURAL INTERSECTIONS          | 08/08/1995 |
| E-128A | VILLAGE SIGNS A-M                              | 08/08/1995 |
| E-128B | VILLAGE SIGNS N-W                              | 08/08/1995 |
| E-136B | STATE ROUTE MARKER SIGN DETAILS                | 08/08/1995 |
| E-136C | STATE NUMBER TOWN HIGHWAY SIGN DETAILS         | 08/08/1995 |
| E-138  | MILEMARKER DETAILS STATE AND TOWN HIGHWAYS     | 05/30/2003 |
| E-141  | REGULATORY SIGN DETAILS                        | 09/20/1995 |
| E-145A | REGULATORY SIGN DETAILS LANE USE CONTROL SIGNS | 12/23/1994 |
| E-145B | REGULATORY SIGN DETAILS LANE USE CONTROL SIGNS | 12/23/1994 |
| E-150  | WARNING SIGN DETAILS                           | 05/01/2004 |
| E-153  | WARNING SIGN DETAILS                           | 05/01/2004 |
| E-154  | WARNING SIGN DETAILS                           | 05/01/2004 |
| E-164  | SQUARE STEEL POSTS                             | 05/20/1999 |

CLASS I SECTIONS OF HIGHWAY TO BE EXCLUDED FROM THIS PROJECT

| TOWN        | BEGIN MM | END MM | DISTANCE |
|-------------|----------|--------|----------|
| MANCHESTER  | 0.000    | 1.259  | 1.259    |
| CHESTER     | 4.373    | 5.206  | 0.833    |
| SPRINGFIELD | 3.528    | 6.349  | 2.821    |

TOTAL CLASS I MILEAGE 4.913



NOTE :

THE POSTS SHALL BE CAREFULLY FORMED OF STEEL WITH A MINIMUM YIELD OF 55,000 PSI INTO A SIZE AND SHAPE WITH CORNERS INDUCTION WELDED IN SUCH A MANNER THAT NEITHER FLASH NOR WELD SHALL INTERFERE WITH THE TELESCOPING PROPERTIES, NOR DAMAGE THE GALVANIZING.

\*THE WALL THICKNESS TOLERANCES SHALL BE +.005" AND -.010" FOR THE 12 GAUGE.

\*THE WALL THICKNESS TOLERANCES SHALL BE +.002" AND -.008" FOR THE 14 GAUGE.

DIMENSION DETAILS AND POST SELECTION CHART

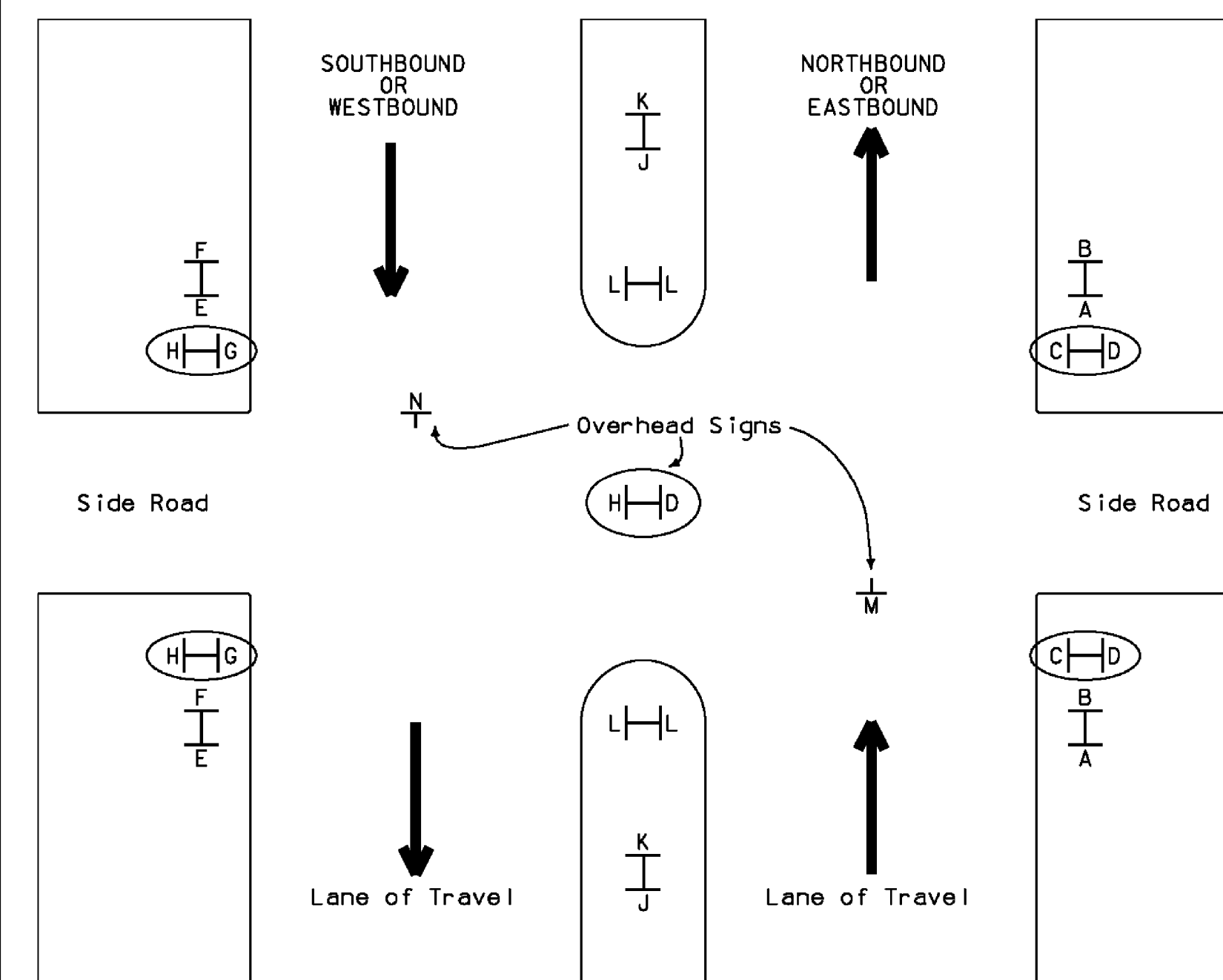
| POST SELECTION CHART                                              |            |      |          |                                 |                         |                         |                           |                             |
|-------------------------------------------------------------------|------------|------|----------|---------------------------------|-------------------------|-------------------------|---------------------------|-----------------------------|
| SIGN AREA ( FT <sup>2</sup> ) X H ( FT ) ≤ SV ( SELECTION VALUE ) |            |      |          |                                 |                         |                         |                           |                             |
| POST SIZE                                                         | DIMENSIONS |      |          | SECTION MODULUS IN <sup>3</sup> | ONE POST S <sub>v</sub> | TWO POST S <sub>v</sub> | THREE POST S <sub>v</sub> | NUMBER PERMITTED IN 8' PATH |
|                                                                   | LBS/FT.    | A    | *B GAUGE |                                 |                         |                         |                           |                             |
| 1.88                                                              | 1 3/4"     | .083 | 14       | 0.230                           | 47                      | 94                      | 141                       | TWO                         |
| 2.42                                                              | 2"         | .105 | 12       | 0.381                           | 77                      | 154                     | 231                       | TWO                         |
| 3.35                                                              | 2 1/2"     | .105 | 12       | 0.642                           | 130                     | 260                     | 390                       | ONE                         |

DESIGN CRITERIA:

WIND SPEED = 70 MPH (10 -YEAR MEAN RECURRENCE INTERVAL)  
 WIND PRESSURE = 19 PSF  
 STEEL MINIMUM YIELD = 55,000 PSI  
 ALLOWABLE STRESS = (1.4) 0.60 FY

THE TRAFFIC SIGN LOCATION CODES ARE TO BE USED INCONJUNCTION WITH THE SIGN SUMMARY SHEETS TO ESTABLISH PROPER SIGN INSTALLATION IN THE FILED.

Traffic Sign Location Codes



NOTE: If side road is a state highway, circled signs should be on the side road's inventory

PROJECT NAME: MANCHESTER - SPRINGFIELD

PROJECT NUMBER: STPG SIGN (25)

FILE NAME: 09b032.dgn  
 PROJECT LEADER: A. GAMBLE  
 DESIGNED BY: N. AVERY  
 GENERAL NOTES

PLOT DATE: 02/06/09  
 DRAWN BY: N. AVERY  
 CHECKED BY: A. GAMBLE  
 SHEET 2 OF 115