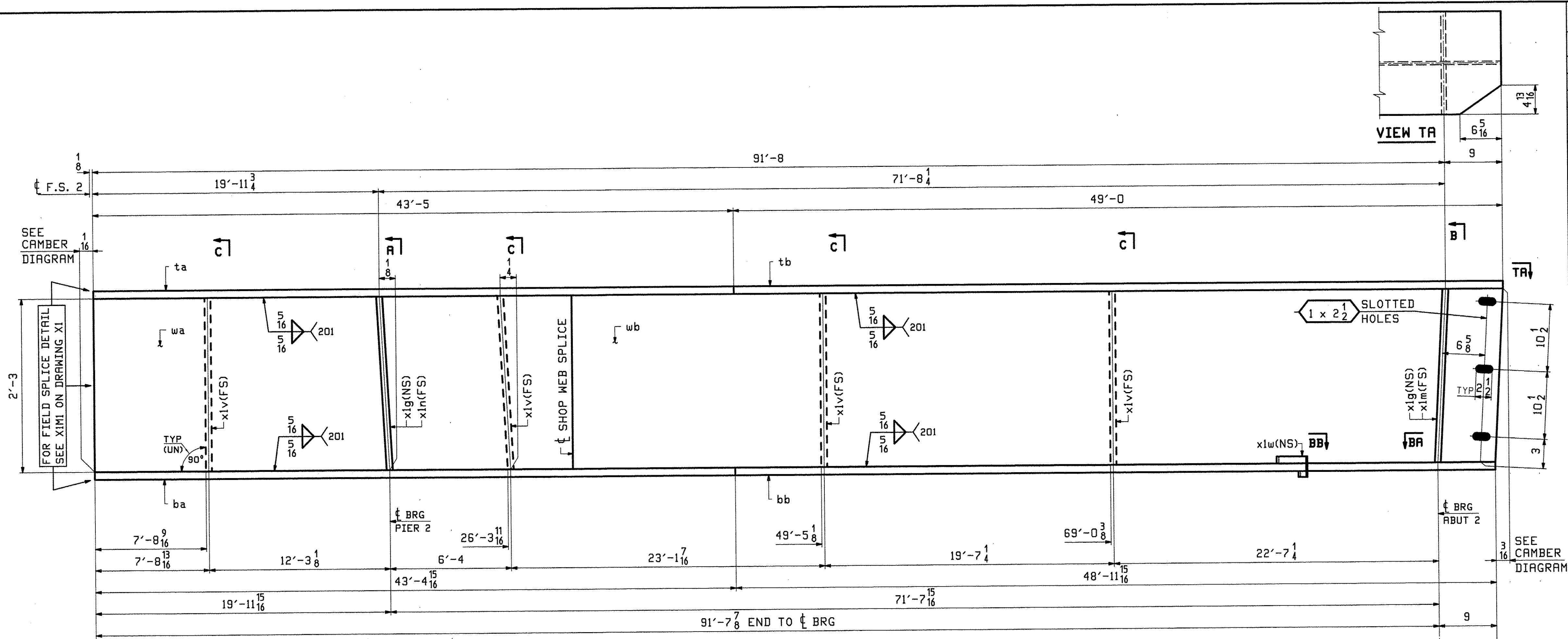
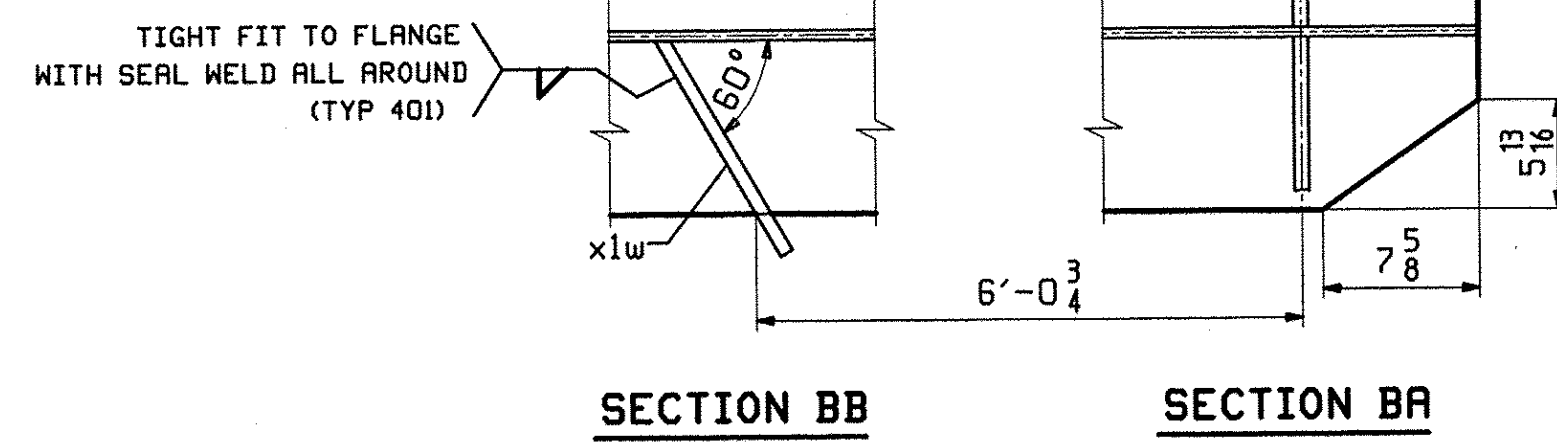


JTB Tue, May 22, 2012 02:38:01 PM casco/104/214/15 - Rev0

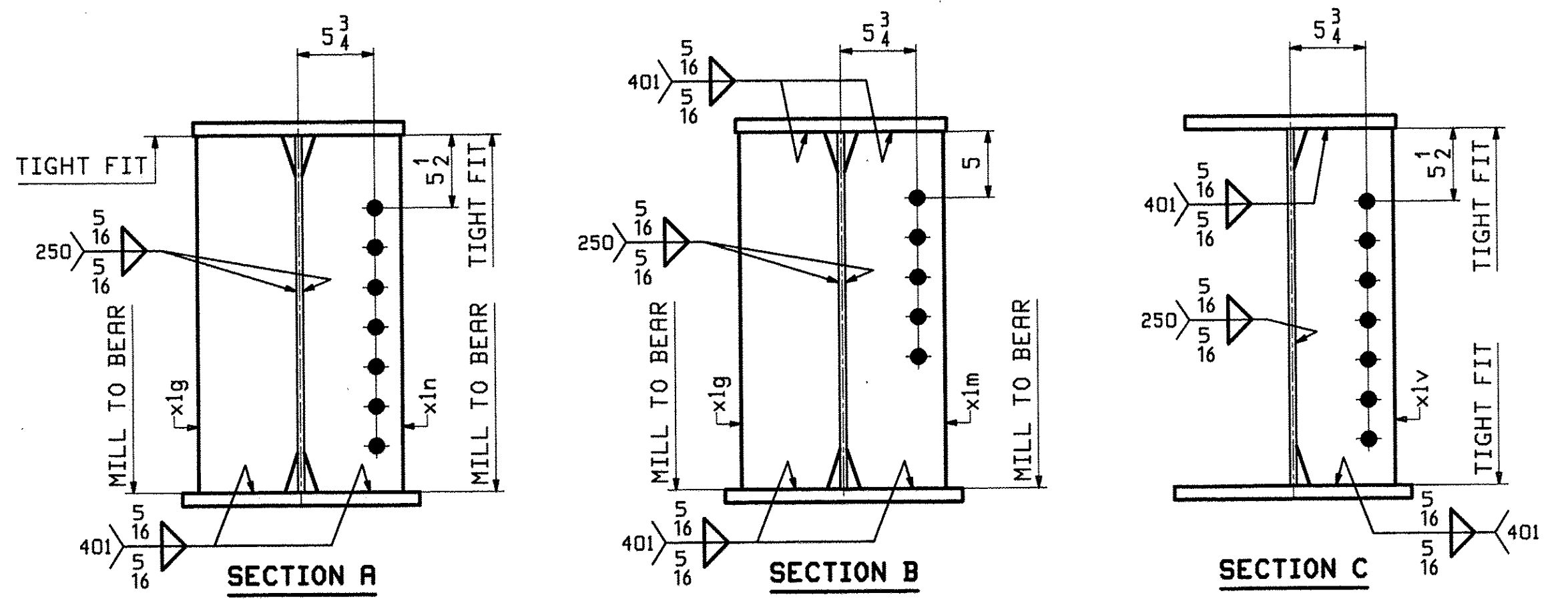
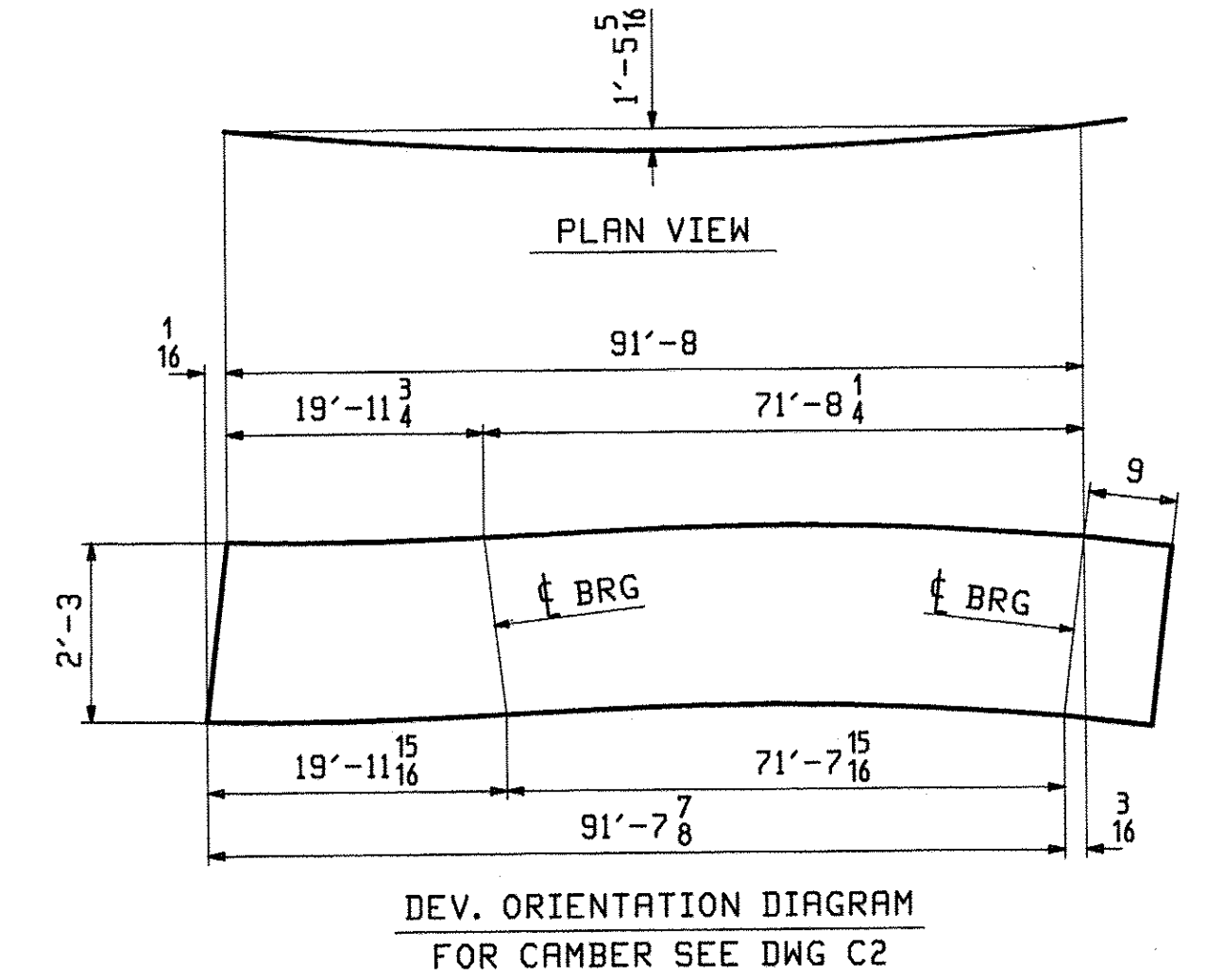


ONE - GIRDER - 15G5C (DEVELOPED)

FOR GIRDER STANDARD DETAILS SEE DRAWING X1.
 FOR CAMBER DIAGRAMS SEE DRAWING C2.
 FOR FLANGE DIAGRAMS SEE DRAWING F3.
 FOR GENERAL NOTES SEE DRAWING G01.
 T2 DENOTES MATERIAL SUBJECT TO CHARPY V-NOTCH TESTING.



| ABM INFO | | SHIP | BILL OF MATERIAL | | | | JOB NO. | DRAWING NO. | REV. |
|----------|------|-------|------------------|------|----------------|---------------------|----------------|-------------|-------------------|
| PAGE | LINE | MARK | QTY | MARK | MATERIAL | LENGTH FT INCHES | REMARKS | WT | PROCUREMENT NOTES |
| | | 15G5C | 1 | | GIRDER | | | | 15227 |
| 4 | Y | | 1 | wa | PL 1/2 x 27 | 32 15/16 | M270-50WT2 | 1489 | |
| 3 | S | | 1 | wb | PL 1/2 x 27 | 60 0 3/8 | M270-50WT2 | 2757 | |
| 3 | Q | | 1 | ta | PL 1x16 | 43 5 | M270-50WT2 | 2364 | |
| 3 | G | | 1 | tb | PL 1x16 | 49 0 | M270-50WT2 | 2668 | |
| 2 | G | | 1 | ba | PL 1x18 | 43 4 15/16 | M270-50WT2 | 2659 | |
| 1 | Y | | 1 | bb | PL 1x18 | 48 11 15/16 | M270-50WT2 | 3001 | |
| 5 | J | | 2 | xlg | PL 3/4 x 7 1/2 | 2 3 | MIE M270-50WT2 | 86 | |
| 5 | J | | 1 | xlm | PL 3/4 x 7 1/2 | 2 3 | MIE M270-50WT2 | 43 | |
| 5 | J | | 1 | xln | PL 3/4 x 7 1/2 | 2 3 | MIE M270-50WT2 | 43 | |
| 5 | L | | 4 | xlv | PL 1/2 x 7 1/2 | 2 3 | M270-50WT2 | 115 | |
| 5 | M | | 1 | xlw | PL 1/2 x 3 | 1 0 1/4 | | 3 | |



| REV. | DATE | REMARKS | DWN | CHK | APVL | SHOP |
|---|------|------------------------------------|-----|-------------|------|------------------|
| 0 | | | | | | MAY 23 2012 |
| | | MATERIAL: M270-50W (UN) | | | | SHOP BOLTS: NONE |
| | | SURFACE PREP. & PAINT: SEE DWG G01 | | | | |
| | | HOLES: 15/16" Ø (UN) | | | | |
| DESCRIPTION: GIRDER - 15G5C | | | | | | |
| CASCO BAY STEEL STRUCTURES, INC. 1 WALLACE AVE. SOUTH PORTLAND, ME 04106 PHONE (207) 780-6722 FAX. (207) 780-6726 | | | | | | |
| STRUCTURE: THETFORD VT. RTE 132 OVER THE WEST BRANCH OF OMPOMPANOOSUC RIVER | | | | DRAWN: JTB | | DATE: 05/16 |
| | | | | CHKD: DBH | | DATE: 05/21 |
| LOCATION: THETFORD, VT | | | | JOB NO. 518 | | DWG NO. 15 |
| PROJ NO. BHF 0177(9) | | | | | | REV. 15 |
| CUSTOMER: A.L. ST. ONGE CONTRACTING | | | | | | |