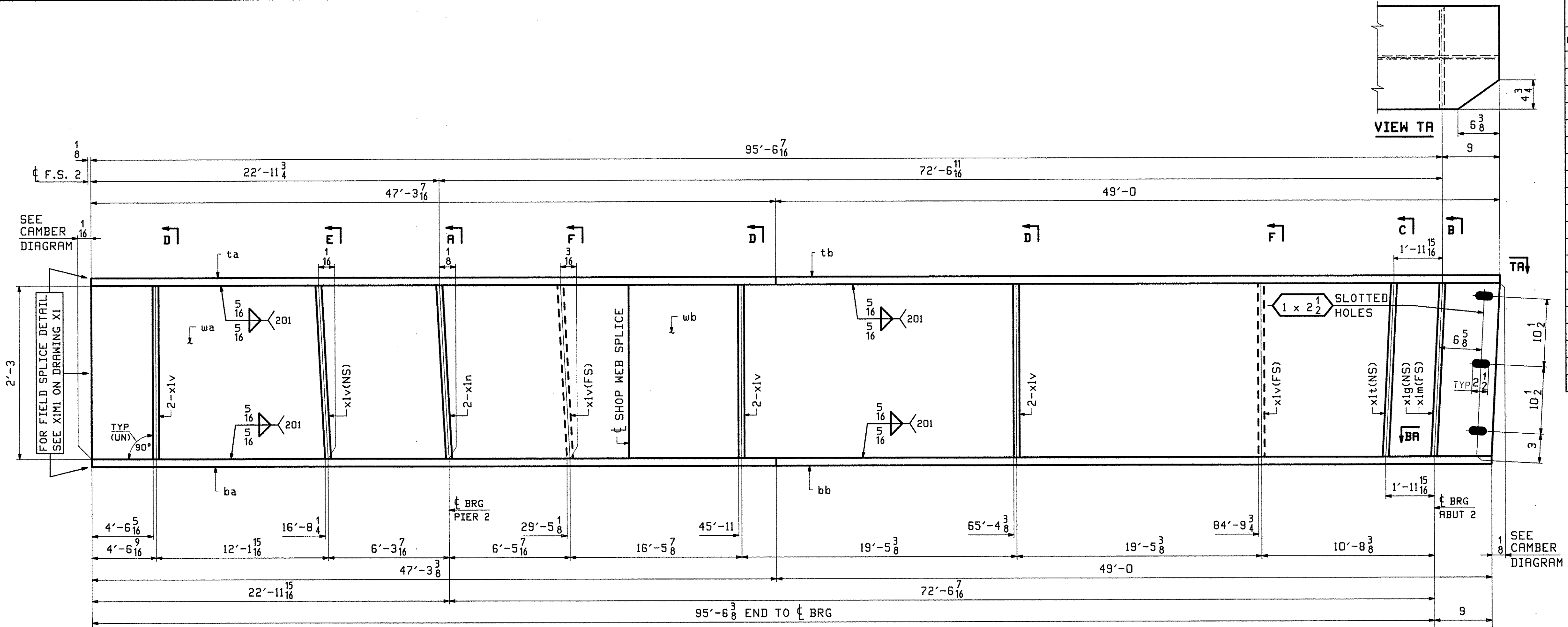


JTB, Inc. Rev. 25, 2012 03/28/2012 04:11:00 AM C:\pwworking\jtb\2012\032812\04_11_00.dwg



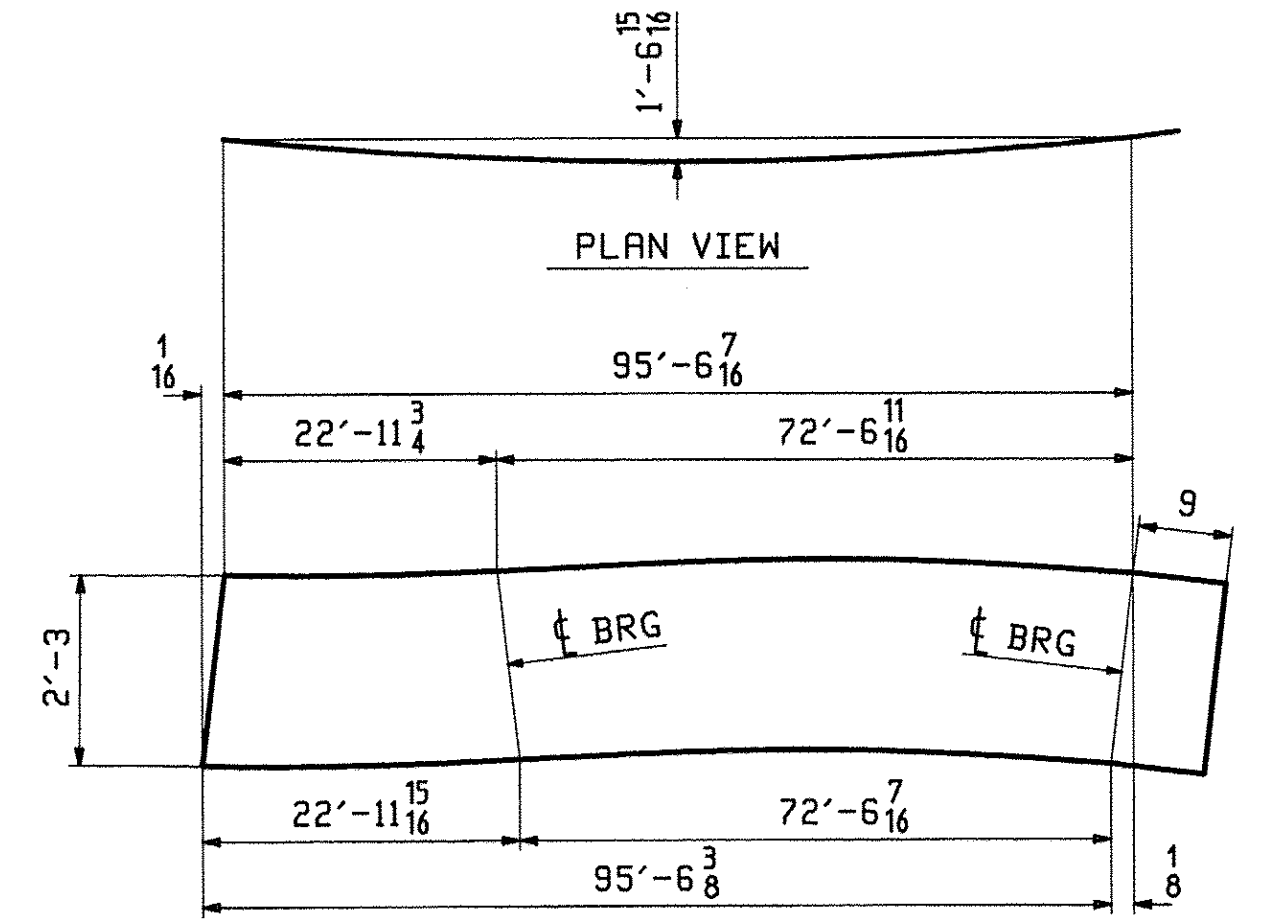
VIEW TA

SECTION BA

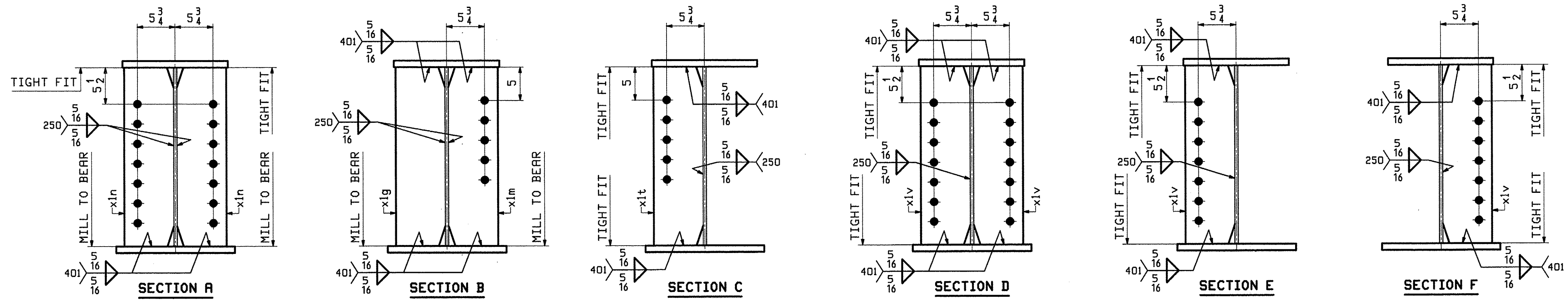
ONE - GIRDER - 14G4C (DEVELOPED)

FOR GIRDER STANDARD DETAILS SEE DRAWING X1.
 FOR CAMBER DIAGRAMS SEE DRAWING C2.
 FOR FLANGE DIAGRAMS SEE DRAWING F3.
 FOR GENERAL NOTES SEE DRAWING GNI.
 T2 DENOTES MATERIAL SUBJECT TO CHARPY V-NOTCH TESTING.

ABM INFO		BILL OF MATERIAL				JOB NO.		DRAWING NO.		REV.
PAGE	LINE	MARK	QTY	MARK	MATERIAL	LENGTH	REMARKS	WT	PROCUREMENT	NOTES
						FT	INCHES			
		14G4C	1		GIRDER				16037	
4	S		1	wa	PL 1/2x27	36 3/4	M270-50WT2		1667	
3	Y		1	wb	PL 1/2x27	60 0	M270-50WT2		2757	
3	J		1	ta	PL 1x16	47 3/4	M270-50WT2		2574	
3	G		1	tb	PL 1x16	48 0	M270-50WT2		2668	
2	A		1	ba	PL 1x18	47 3/8	M270-50WT2		2896	
1	Y		1	bb	PL 1x18	48 0	M270-50WT2		3001	
5	J		1	xlg	PL 3/4x7 1/2	2 3	MIE M270-50WT2		43	
5	J		1	xlm	PL 3/4x7 1/2	2 3	MIE M270-50WT2		43	
5	J		2	xln	PL 3/4x7 1/2	2 3	MIE M270-50WT2		86	
5	K		1	xlt	PL 3/4x7 1/2	2 3	MIE M270-50WT2		43	
5	L		9	xlv	PL 1/2x7 1/2	2 3	M270-50WT2		258	



DEV. ORIENTATION DIAGRAM FOR CAMBER SEE DWG C2



REV.	DATE	REMARKS	DWN	CHK	APVL	SHOP
0						
MAY 23 2012						
MATERIAL:		SURFACE PREP. & PAINT:		HOLES:		SHOP BOLTS:
M270-50W (UN)		SEE DWG GNI		15/16 Ø (UN)		NONE
DESCRIPTION: GIRDER - 14G4C						
CASCO BAY STEEL STRUCTURES, INC.						
1 WALLACE AVE.			PHONE (207) 780-6722			
SOUTH PORTLAND, ME 04106			FAX. (207) 780-6726			
STRUCTURE: THETFORD VT. RTE 132 OVER THE WEST BRANCH OF OMPOMPANOSUC RIVER				DRAWN:	DATE:	
				JTB	05/17	
				CHKD:	DATE:	
				DBH	05/21	
LOCATION: THETFORD, VT				JOB NO.	DWG NO.	
PROJ NO. BHF D177(9)				518	14	
CUSTOMER: A.L. ST. ONGE CONTRACTING						REV. ▲