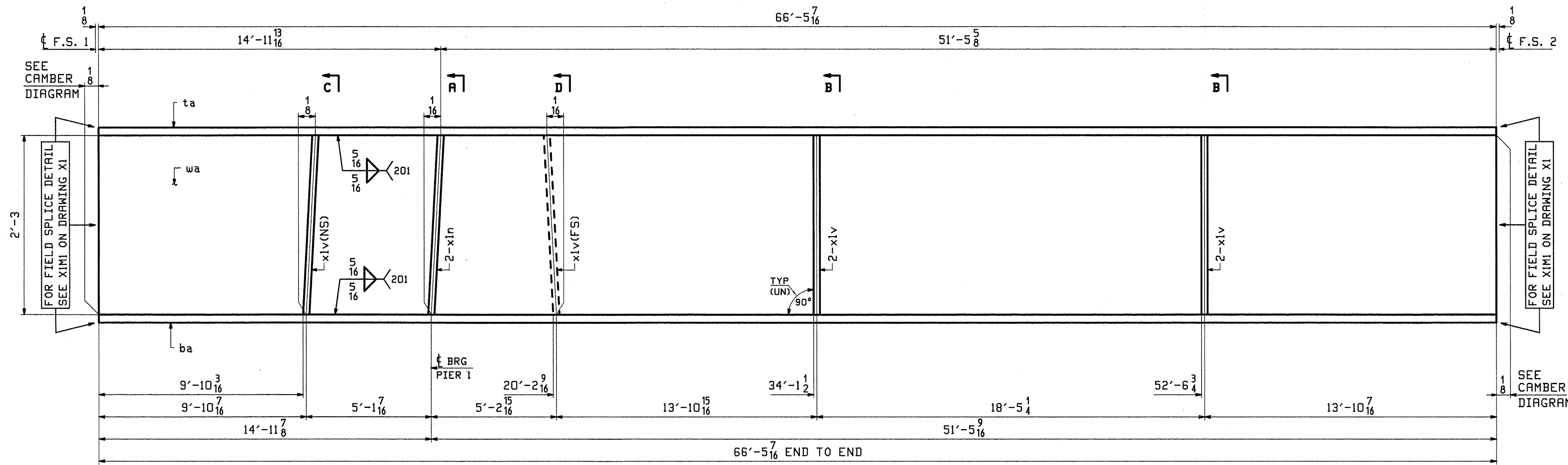
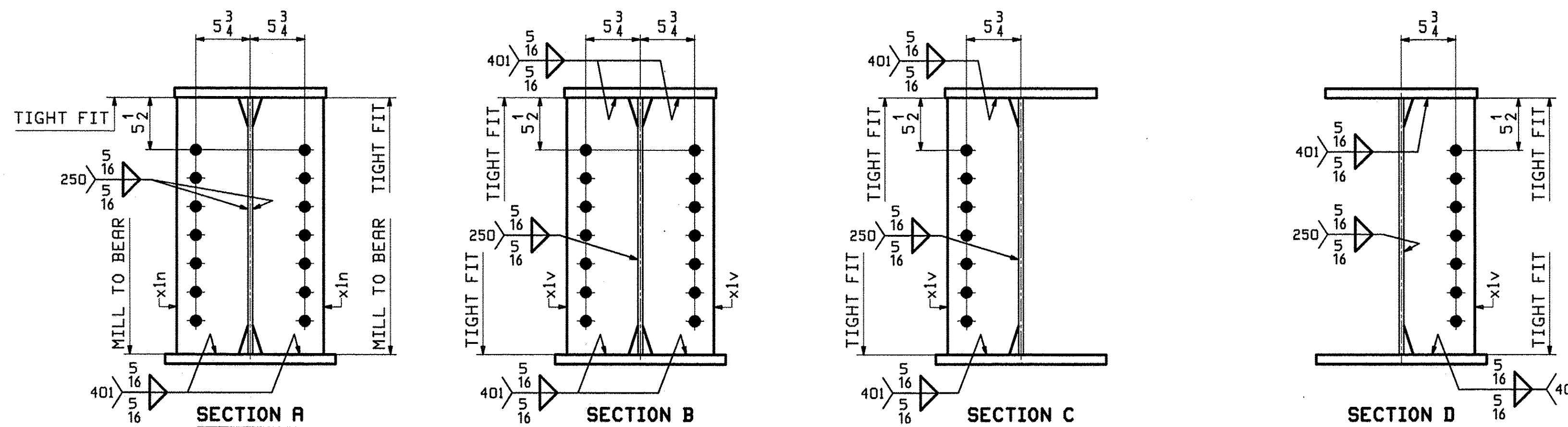
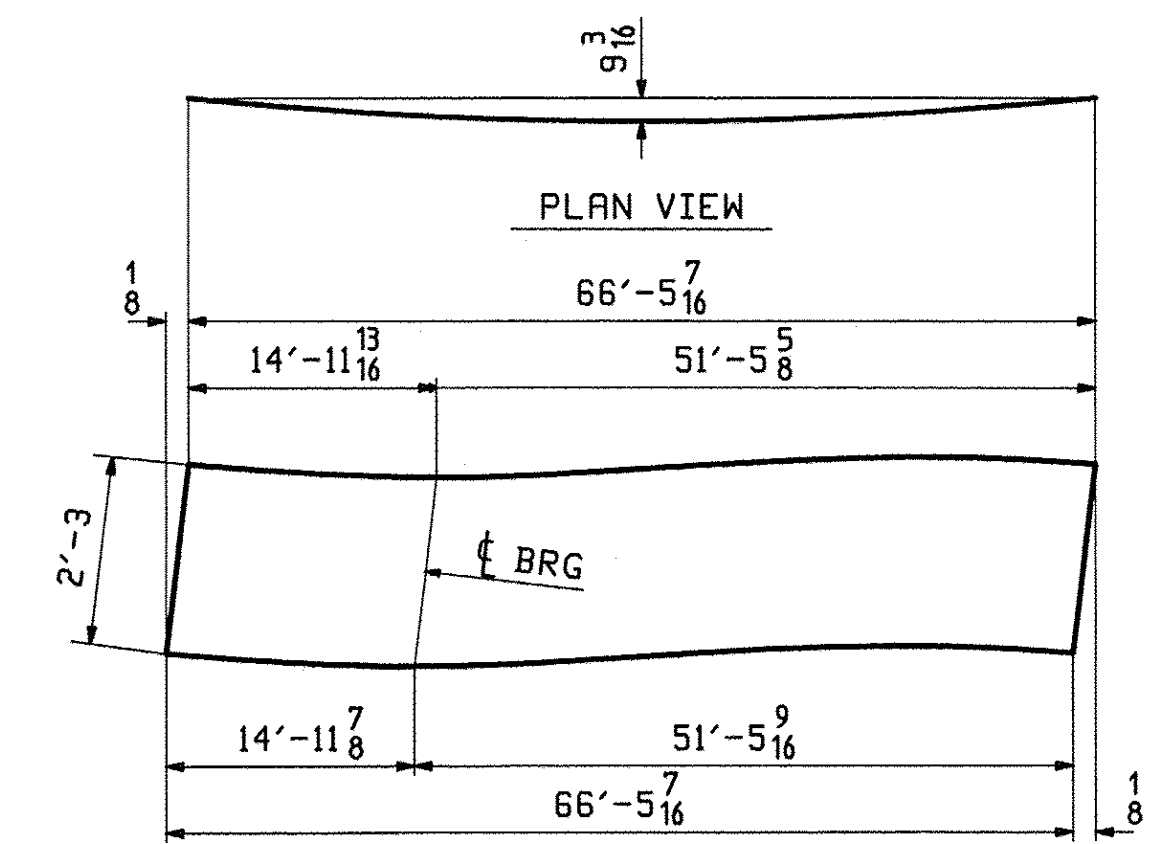


ABM INFO		SHIP	BILL OF MATERIAL			JOB NO.	DRAWING NO.	REV.	
PAGE	LINE	MARK	QTY	MARK	MATERIAL	LENGTH FT INCHES	REMARKS	WT	PROCUREMENT NOTES
		9G4B	1		GIRDER			11000	
4	N		1	wa	PL 2x27	66' 5 ⁹ / ₁₆	M270-SQMT2	3053	
2	S		1	ta	PL 1x16	66' 5 ⁷ / ₁₆	M270-SQMT2	3618	
1	J		1	ba	PL 1x18	66' 5 ⁷ / ₁₆	M270-SQMT2	4070	
5	J		2	xIn	PL 2x7 1/2	2' 3"	MIE M270-SQMT2	86	
5	L		6	xIv	PL 2x7 1/2	2' 3"	M270-SQMT2	172	



ONE - GIRDER - 9G4B (DEVELOPED)

FOR GIRDER STANDARD DETAILS SEE DRAWING X1.
 FOR CAMBER DIAGRAMS SEE DRAWING C1.
 FOR FLANGE DIAGRAMS SEE DRAWING F2.
 FOR GENERAL NOTES SEE DRAWING GNI.
 T2 DENOTES MATERIAL SUBJECT TO CHARPY V-NOTCH TESTING.



REV.	DATE	REMARKS	DWN	CHK	APVL	SHOP
0						
					MAY 23 2022	
MATERIAL:		SURFACE PREP. & PAINT:		HOLES:		SHOP BOLTS:
M270-50W (UN)		SEE DWG GNI		1 1/2" Ø		NONE
DESCRIPTION: GIRDER - 9G4B						
CASCO BAY STEEL STRUCTURES, INC.						
1 WALLACE AVE.			PHONE (207) 780-6722			
SOUTH PORTLAND, ME 04106			FAX. (207) 780-6726			
STRUCTURE: THETFORD VT. RTE 132 OVER THE WEST BRANCH OF OMPOMPANOOSUC RIVER				DRAWN:	DATE:	
				JTB	05/16	
				CHKD:	DATE:	
				DBH	05/21	
LOCATION: THETFORD, VT			JOB NO.		DWG NO.	
PROJ NO. BHF 0177(9)			518		9	
CUSTOMER: A.L. ST. ONGE CONTRACTING			REV.			