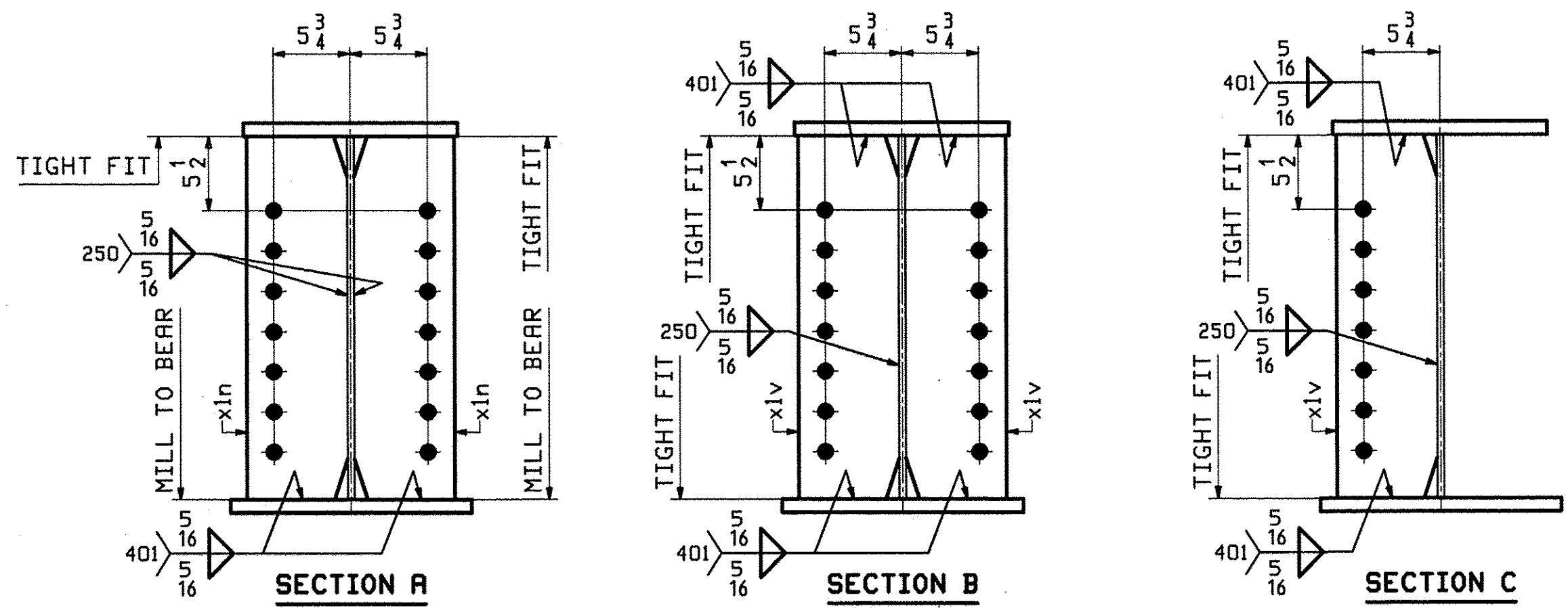
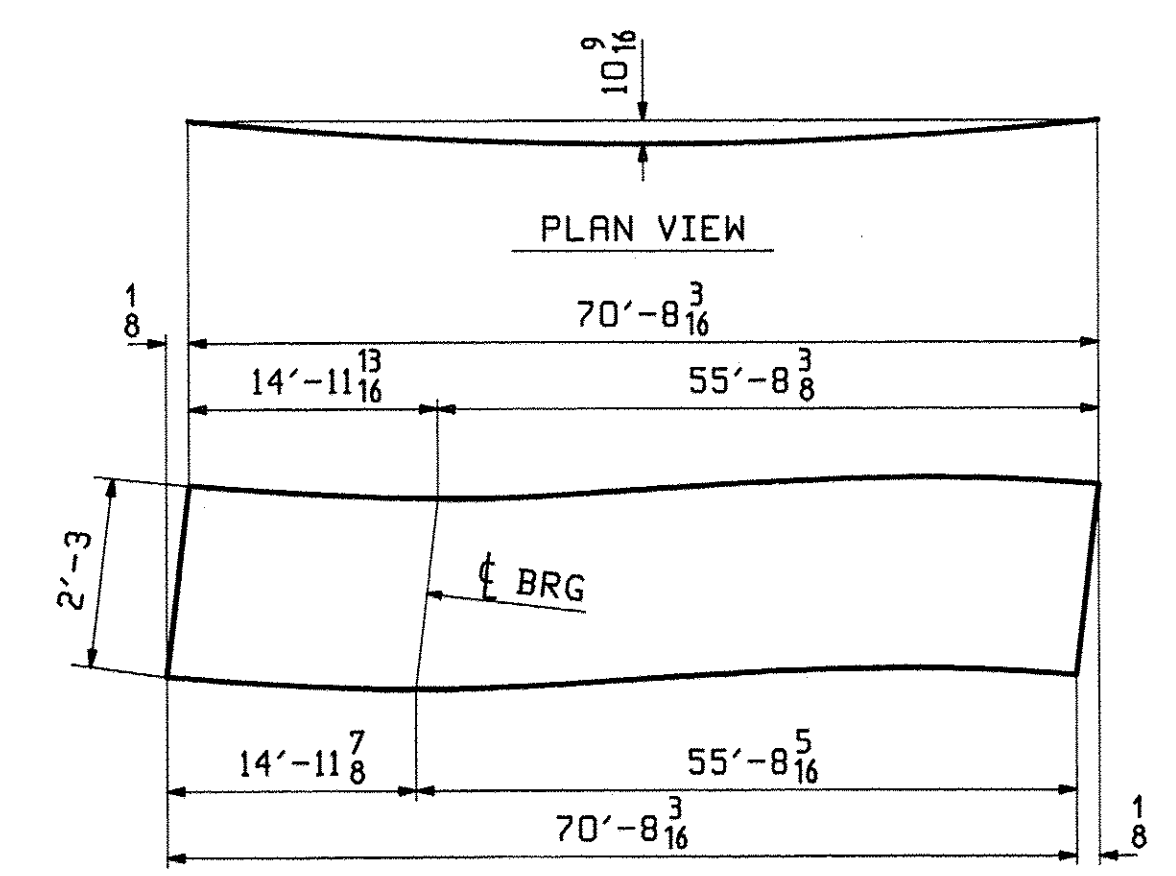


ONE - GIRDER - 7G2B (DEVELOPED)

FOR GIRDER STANDARD DETAILS SEE DRAWING X1.
 FOR CAMBER DIAGRAMS SEE DRAWING C1.
 FOR FLANGE DIAGRAMS SEE DRAWING F2.
 FOR GENERAL NOTES SEE DRAWING GNI.
 T2 DENOTES MATERIAL SUBJECT TO CHARPY V-NOTCH TESTING.

ABM INFO		BILL OF MATERIAL				JOB NO.	DRAWING NO.	REV.	
PAGE	LINE	MARK	QTY	MARK	MATERIAL	LENGTH FT INCHES	REMARKS	WT	PROCUREMENT NOTES
		7G2B	1		GIRDER			11770	
4	J		1	wa	PL 1/2x27	70 8 5/16	M270-S0HT2	3247	
2	N		1	ta	PL 1x16	70 8 3/16	M270-S0HT2	3848	
1	E		1	ba	PL 1x18	70 8 3/16	M270-S0HT2	4329	
5	J		2	x1n	PL 3/4x7 1/2	2 3	M12 M270-S0HT2	86	
5	L		9	x1v	PL 1/2x7 1/2	2 3	M270-S0HT2	258	



REV.	DATE	REMARKS	DWN	CHK	APVL	SHOP
0						MAY 23 2012
MATERIAL:		SURFACE PREP. & PAINT:	HOLES:		SHOP BOLTS:	
M270-S0W (UN)		SEE DWG GNI	15 1/16" Ø		NONE	
DESCRIPTION: GIRDER - 7G2B						
CASCO BAY STEEL STRUCTURES, INC.						
1 WALLACE AVE.			PHONE (207) 780-6722		TENSOR 3124	
SOUTH PORTLAND, ME 04106			FAX. (207) 780-6726			
STRUCTURE: THETFORD VT. RTE 132 OVER THE WEST BRANCH OF OMPOMPANOOUC RIVER				DRAWN:	DATE:	
				JTB	05/16	
				CHKD:	DATE:	
				DBH	05/21	
LOCATION: THETFORD, VT				JOB NO.	DWG NO.	
PROJ NO. BHF 0177(9)				518	7	
CUSTOMER: A.L. ST. ONGE CONTRACTING				REV.		

JTB, Inc. May 22, 2012 09:55:55 PM C:\msd\jsh\7812\7 - Rev0