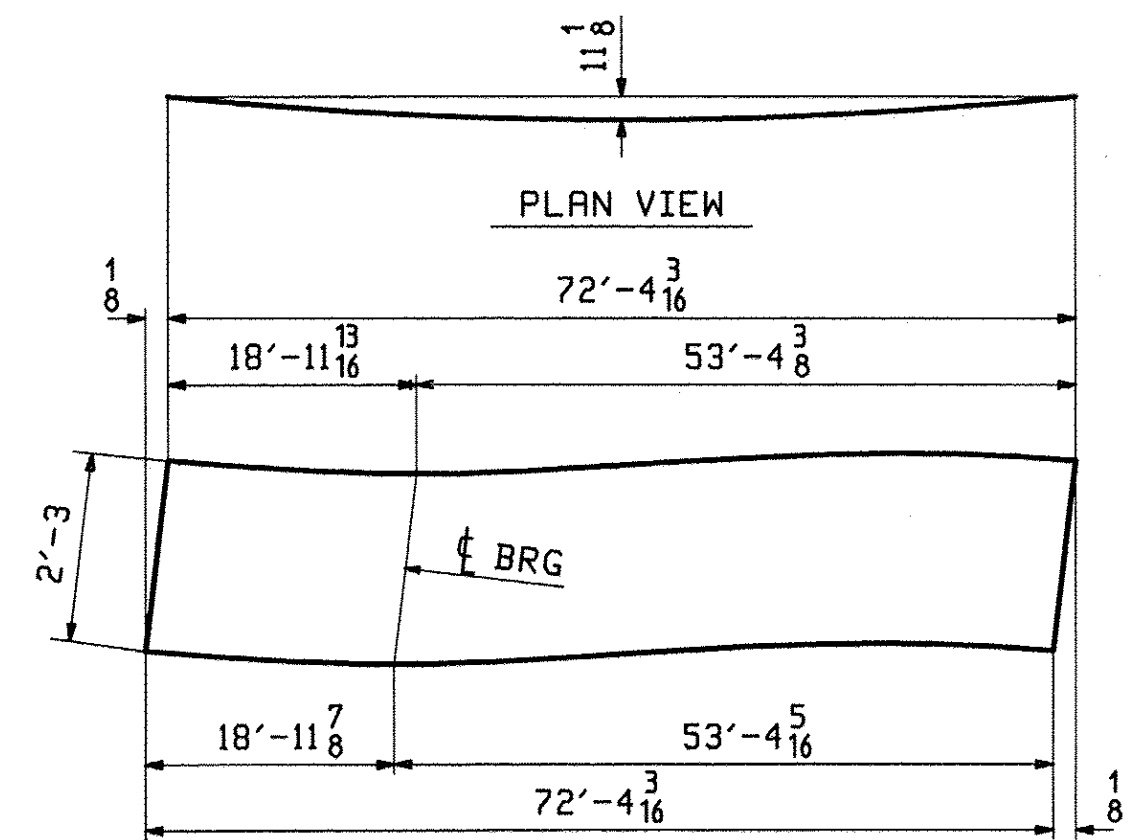


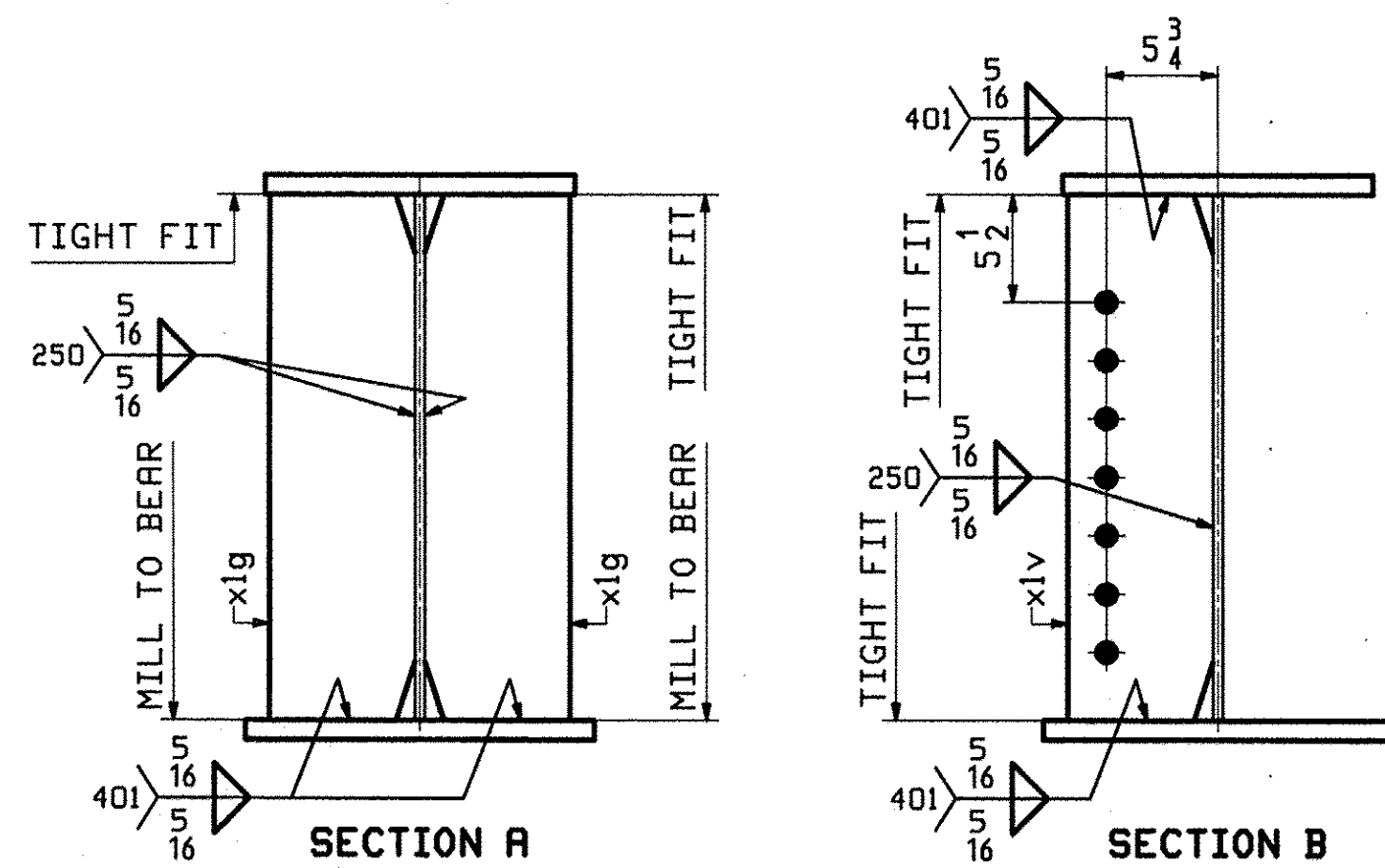
**ONE - GIRDER - 6G1B (DEVELOPED)**

FOR GIRDER STANDARD DETAILS SEE DRAWING XI.  
 FOR CAMBER DIAGRAMS SEE DRAWING C1.  
 FOR FLANGE DIAGRAMS SEE DRAWING F2.  
 FOR GENERAL NOTES SEE DRAWING GNI.  
 T2 DENOTES MATERIAL SUBJECT TO CHARPY V-NOTCH TESTING.

ABM INFO		SHIP		BILL OF MATERIAL				JOB NO.	DRAWING NO.	REV.
PAGE	LINE	MARK	QTY	MARK	MATERIAL	LENGTH	REMARKS	WT	PROCUREMENT NOTES	
						FT INCHES				
					GIRDER			11924		
4	G		1	wa	PL 1/2x27	72 5/416	M270-SOWT2	3324		
2	J		1	ta	PL 1x16	72 3/416	M270-SOWT2	3939		
1	A		1	ba	PL 1x18	72 4 3/16	M270-SOWT2	4431		
5	J		2	xlg	PL 3/4x7 1/2	2 3	MIE M270-SOWT2	86		
5	L		5	xlv	PL 1 1/2x7 1/2	2 3	M270-SOWT2	144		



DEV. ORIENTATION DIAGRAM  
 FOR CAMBER SEE DWG C1



REV.	DATE	REMARKS	DWN	CHK	APVL	SHOP
0						MAY 23 2012
MATERIAL:		SURFACE PREP. & PAINT:	HOLES:		SHOP BOLTS:	
M270-SOW (UN)		SEE DWG GNI	15" Ø		NONE	
DESCRIPTION: GIRDER - 6G1B						
CASCO BAY STEEL STRUCTURES, INC.						
1 WALLACE AVE.			PHONE (207) 780-6722		TENSOR 3124	
SOUTH PORTLAND, ME 04106			FAX. (207) 780-6726			
STRUCTURE: THETFORD VT. RTE 132 OVER THE WEST BRANCH OF OMPOMPANOSUC RIVER				DRAWN:	DATE:	
				JTB	05/16	
				CHKD:	DATE:	
				DBH	05/21	
LOCATION: THETFORD, VT				JOB NO.	DWG NO.	
PROJ NO. BHF 0177(9)				518	6	
CUSTOMER: A.L. ST. ONGE CONTRACTING					REV. △	