

TRAFFIC SIGN, TYPE A
 STA. 102+76, RT
 STA. 104+86, 47.92' RT
 STA. 105+10, RT
 STA. 105+95, 36.78' RT
 STA. 106+50, RT
 STA. 108+83, LT (2)

REMOVING SIGNS
 STA. 104+92, 31.43' RT (2)
 STA. 105+54, 60.33' RT

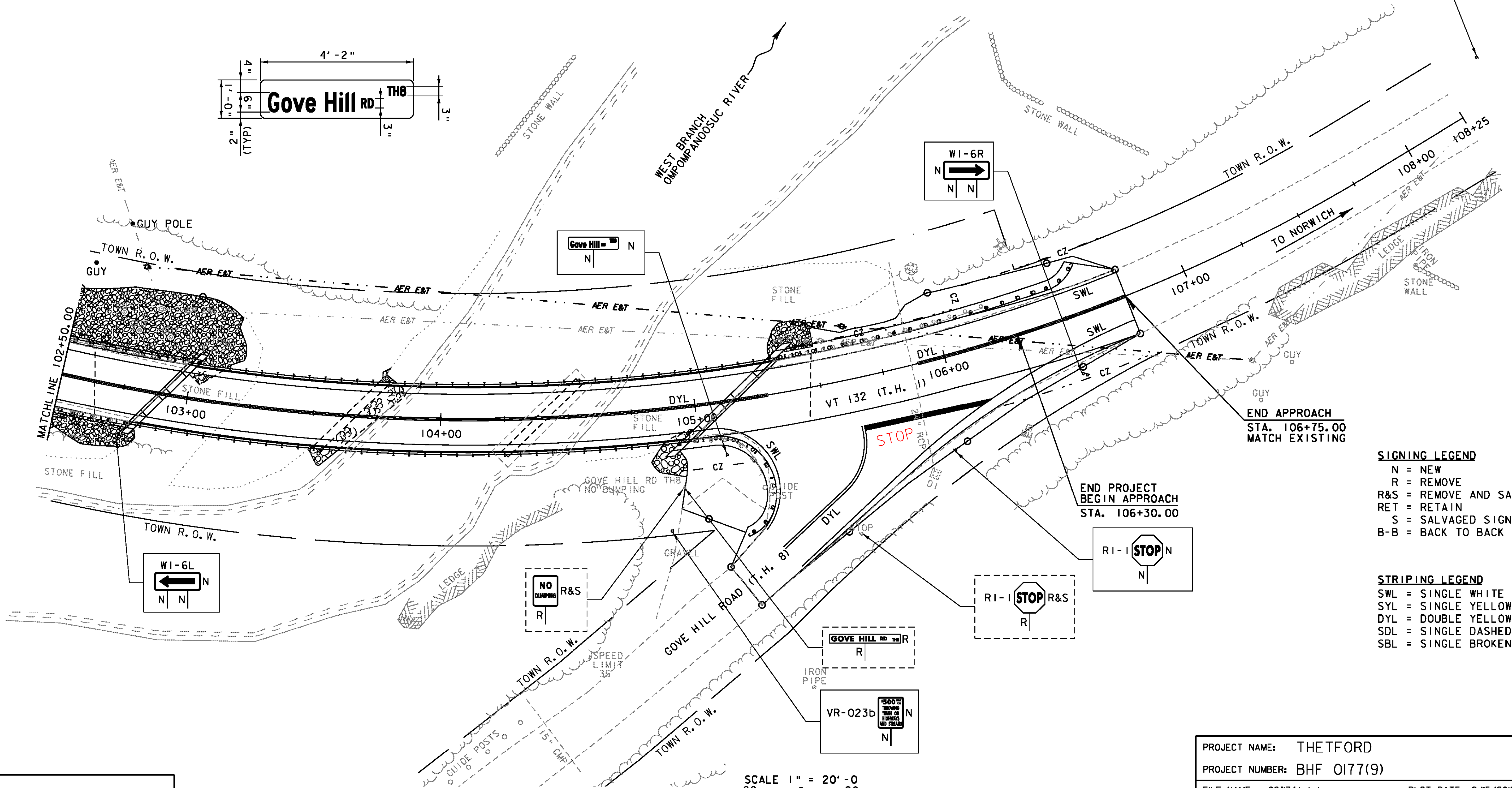
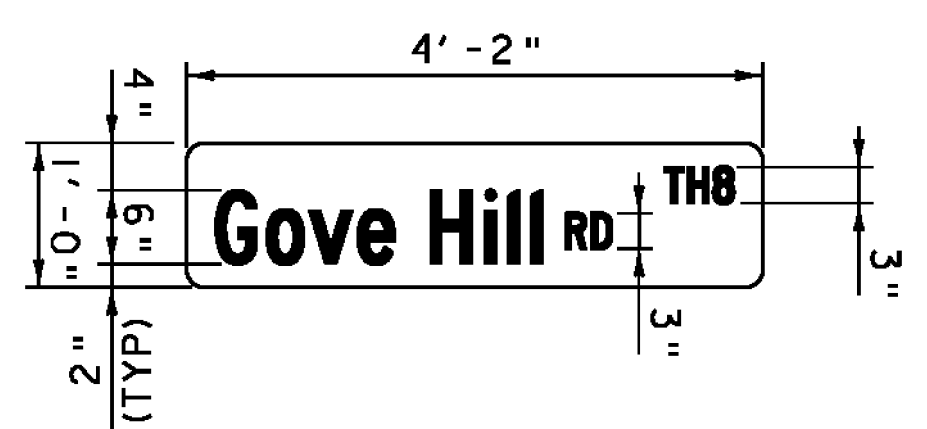
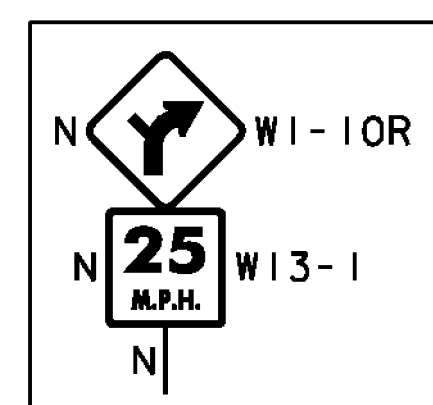
4 INCH YELLOW LINE
 STA. 102+50 - STA. 105+29, LT & RT
 STA. 105+26, 60.17' RT - STA. 105+63, RT
 STA. 105+89 - STA. 106+75, LT & RT

4 INCH WHITE LINE
 STA. 102+50 - STA. 106+75, LT
 STA. 102+50, RT - STA. 105+21, 51.83', RT
 STA. 105+31, 68.50' RT - STA. 106+75, RT

24 INCH STOP BAR
 STA. 105+63 - STA. 106+14, RT

LETTER OR SYMBOL
 STA. 105+70 - STA. 105+79, RT (STOP)

NOTE:
 INSTALL 200 FT (MIN)
 WEST OF EXISTING
 35 MPH SIGN



SIGNING LEGEND
 N = NEW
 R = REMOVE
 R&S = REMOVE AND SALVAGE
 RET = RETAIN
 S = SALVAGED SIGN
 B-B = BACK TO BACK

STRIPING LEGEND
 SWL = SINGLE WHITE LINE
 SYL = SINGLE YELLOW LINE
 DYL = DOUBLE YELLOW LINE
 SDL = SINGLE DASHED LINE
 SBL = SINGLE BROKEN LINE

DATUM
 VERTICAL NAVD 88
 HORIZONTAL NAD 83 (92)

SCALE 1" = 20'-0"
 20 0 20



PROJECT NAME: THETFORD
 PROJECT NUMBER: BHF 0177(9)
 FILE NAME: z08j74tsi.dgn PLOT DATE: 2/15/2012
 PROJECT LEADER: M.A. COLGAN DRAWN BY: B.M. KLINEFELTER
 DESIGNED BY: S.E. BURBANK CHECKED BY: S.E. BURBANK
 TRAFFIC SIGNS & MARKINGS SHEET (2 OF 2) SHEET 60 OF 78