

**BRIDGE RAILING, GALVANIZED
HDSB/FASCIA MOUNTED/ STEEL TUBING**
STA. 102+96 - STA. 105+38, LT
STA. 102+78 - STA. 104+99, RT

COLD PLANING, BITUMINOUS PAVEMENT
STA. 106+55 - STA. 106+75, LT & RT
STA. 105+06, 64.55' LT - STA. 105+15, 81.09' RT

HD STEEL BEAM GUARDRAIL, GALVANIZED
STA. 105+38 - STA. 106+60, LT
STA. 104+99, RT - STA. 105+14, 53.16' RT

REMOVAL AND DISPOSAL OF GUARDRAIL
STA. 102+50 - STA. 103+01, LT
STA. 102+50 - STA. 102+82, RT
STA. 105+32 - STA. 106+20, LT
STA. 104+94 - STA. 105+22, RT

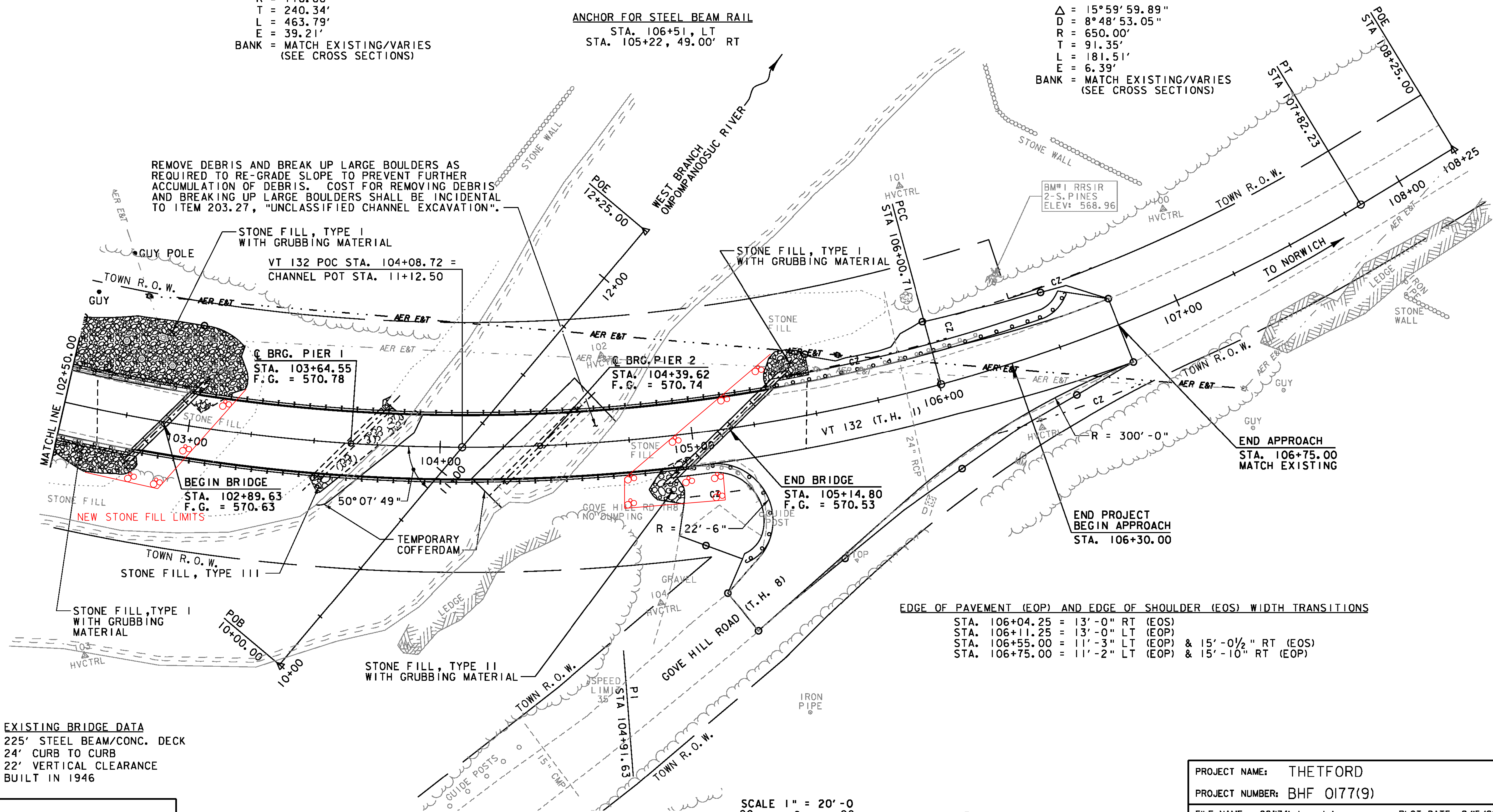
**VT 132 (T.H. 1)
CURVE NO. 1 DATA**
Δ = 37°04'04.31"
D = 7°59'32.44"
R = 716.88'
T = 240.34'
L = 463.79'
E = 39.21'
BANK = MATCH EXISTING/VARIES
(SEE CROSS SECTIONS)

HD STEEL BEAM GUARDRAIL, GALVANIZED W/8 FEET POSTS
STA. 102+50 - STA. 102+96, LT
STA. 102+50 - STA. 102+78, RT

ANCHOR FOR STEEL BEAM RAIL
STA. 106+51, LT
STA. 105+22, 49.00' RT

**VT 132 (T.H. 1)
CURVE NO. 2 DATA**
Δ = 15°59'59.89"
D = 8°48'53.05"
R = 650.00'
T = 91.35'
L = 181.51'
E = 6.39'
BANK = MATCH EXISTING/VARIES
(SEE CROSS SECTIONS)

REMOVE DEBRIS AND BREAK UP LARGE BOULDERS AS REQUIRED TO RE-GRADE SLOPE TO PREVENT FURTHER ACCUMULATION OF DEBRIS. COST FOR REMOVING DEBRIS AND BREAKING UP LARGE BOULDERS SHALL BE INCIDENTAL TO ITEM 203.27, "UNCLASSIFIED CHANNEL EXCAVATION".



EXISTING BRIDGE DATA
225' STEEL BEAM/CONC. DECK
24' CURB TO CURB
22' VERTICAL CLEARANCE
BUILT IN 1946

EDGE OF PAVEMENT (EOP) AND EDGE OF SHOULDER (EOS) WIDTH TRANSITIONS
STA. 106+04.25 = 13'-0" RT (EOS)
STA. 106+11.25 = 13'-0" LT (EOP)
STA. 106+55.00 = 11'-3" LT (EOP) & 15'-0 1/2" RT (EOS)
STA. 106+75.00 = 11'-2" LT (EOP) & 15'-10" RT (EOP)

SCALE 1" = 20'-0"
20 0 20



DATUM
VERTICAL NAVD 88
HORIZONTAL NAD 83 (92)

PROJECT NAME: THETFORD
PROJECT NUMBER: BHF 0177(9)
FILE NAME: z08j174bdr_nul.dgn PLOT DATE: 2/15/2012
PROJECT LEADER: M.A. COLGAN DRAWN BY: B.M. KLINEFELTER
DESIGNED BY: D.M. PECK CHECKED BY: S.E. BURBANK
LAYOUT SHEET (2 OF 2) SHEET 12 OF 78