

**HD STEEL BEAM GUARDRAIL, GALVANIZED W/8 FEET POSTS**

STA. 101+50, 89.98' LT - STA. 102+50, LT  
 STA. 100+05 - STA. 102+50, RT

**COLD PLANING, BITUMINOUS PAVEMENT**

STA. 101+61 - STA. 101+81, LT & RT

**REMOVAL AND DISPOSAL OF GUARDRAIL**

STA. 101+42, 58.75' LT - STA. 102+50, LT  
 STA. 100+14 - STA. 102+50, RT

**ANCHOR FOR STEEL BEAM RAIL**

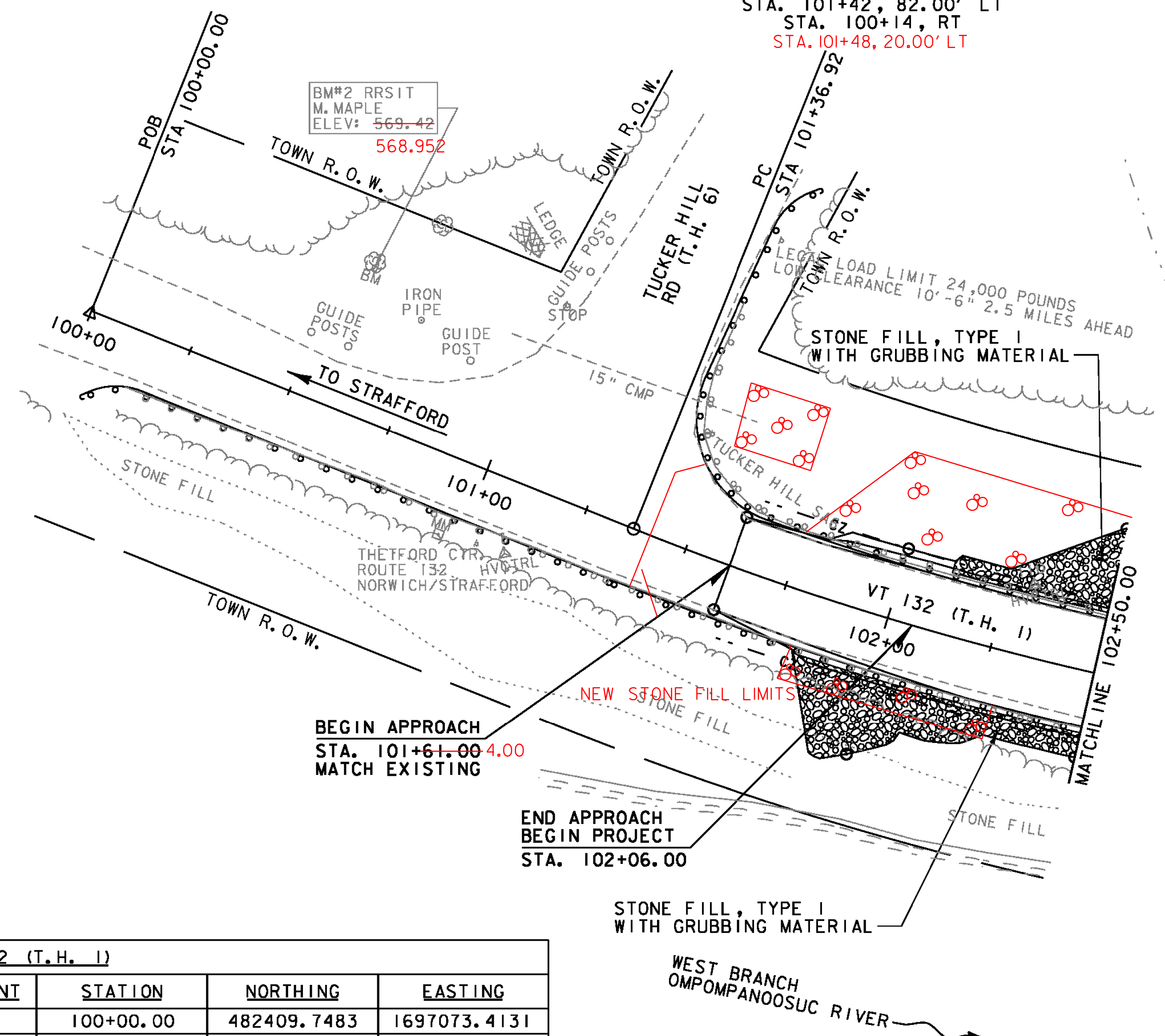
STA. 101+42, 82.00' LT  
 STA. 100+14, RT  
 STA. 101+48, 20.00' LT

**EDGE OF PAVEMENT (EOP) WIDTH TRANSITIONS**

STA. 101+61.00 = 12'-0" LT & 11'-0" RT (EOP)  
 STA. 101+81.00 = 12'-0" LT & 11'-4" RT (EOP)  
 STA. 102+06.00 = 13'-0" LT (EOP)  
 STA. 102+22.75 = 13'-0" RT (EOP)

**VT 132 (T.H. 1)  
 CURVE NO. 1 DATA**

Δ = 37°04'04.31"  
 D = 7°59'32.44"  
 R = 716.88'  
 T = 240.34'  
 L = 463.79'  
 E = 39.21'  
 BANK = MATCH EXISTING/VARIES  
 (SEE CROSS SECTIONS)



VT 132 (T.H. 1)			
ELEMENT	STATION	NORTHING	EASTING
POB	100+00.00	482409.7483	1697073.4131
PC	101+36.92	482272.8693	1697070.0172
PI	104+91.63	481918.2649	1697061.2199
PCC	106+00.71	481837.3004	1697204.1221
PT	107+82.23	481706.3815	1697328.9980
POE	108+25.00	481679.8406	1697362.5404
WEST BRANCH OMPOMPANOOSUC RIVER			
ELEMENT	STATION	NORTHING	EASTING
POB	10+00.00	482044.0281	1697008.3301
POE	12+25.00	481968.6726	1697220.3361

DATUM  
 VERTICAL NAVD 88  
 HORIZONTAL NAD 83 (92)

SCALE 1" = 20'-0"  
 20 0 20



PROJECT NAME: THETFORD  
 PROJECT NUMBER: BHF 0177(9)  
 FILE NAME: z08j174bdr\_nul.dgn PLOT DATE: 2/15/2012  
 PROJECT LEADER: M.A. COLGAN DRAWN BY: B.M. KLINEFELTER  
 DESIGNED BY: D.M. PECK CHECKED BY: S.E. BURBANK  
 LAYOUT SHEET (1 OF 2) SHEET II OF 78