

GPS CONTROL POINTS

HVCTRL #1

UNION VILLAGE
 NORTH = 471637.23
 EAST = 1704501.32
 ELEV. = 583.20

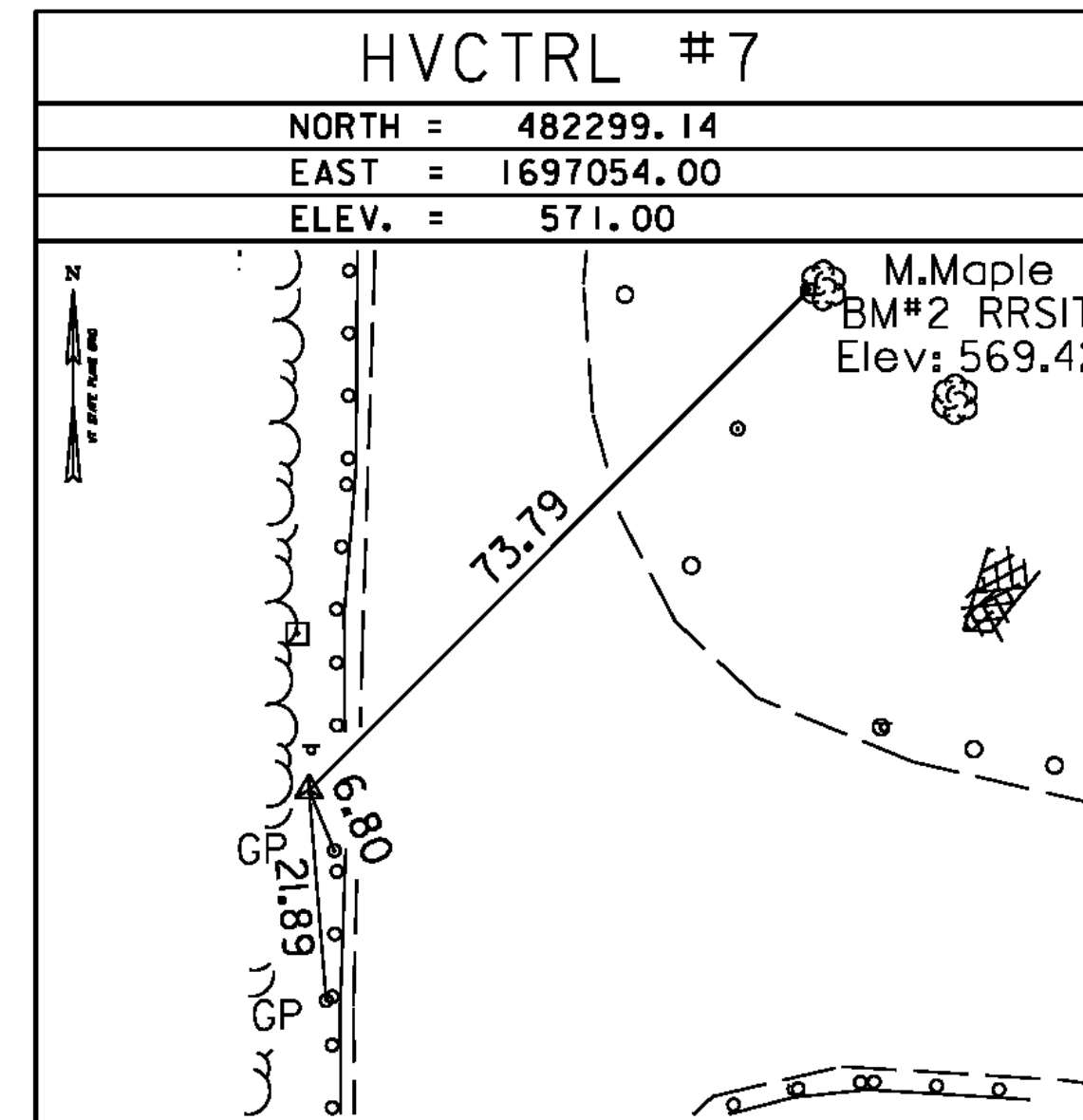
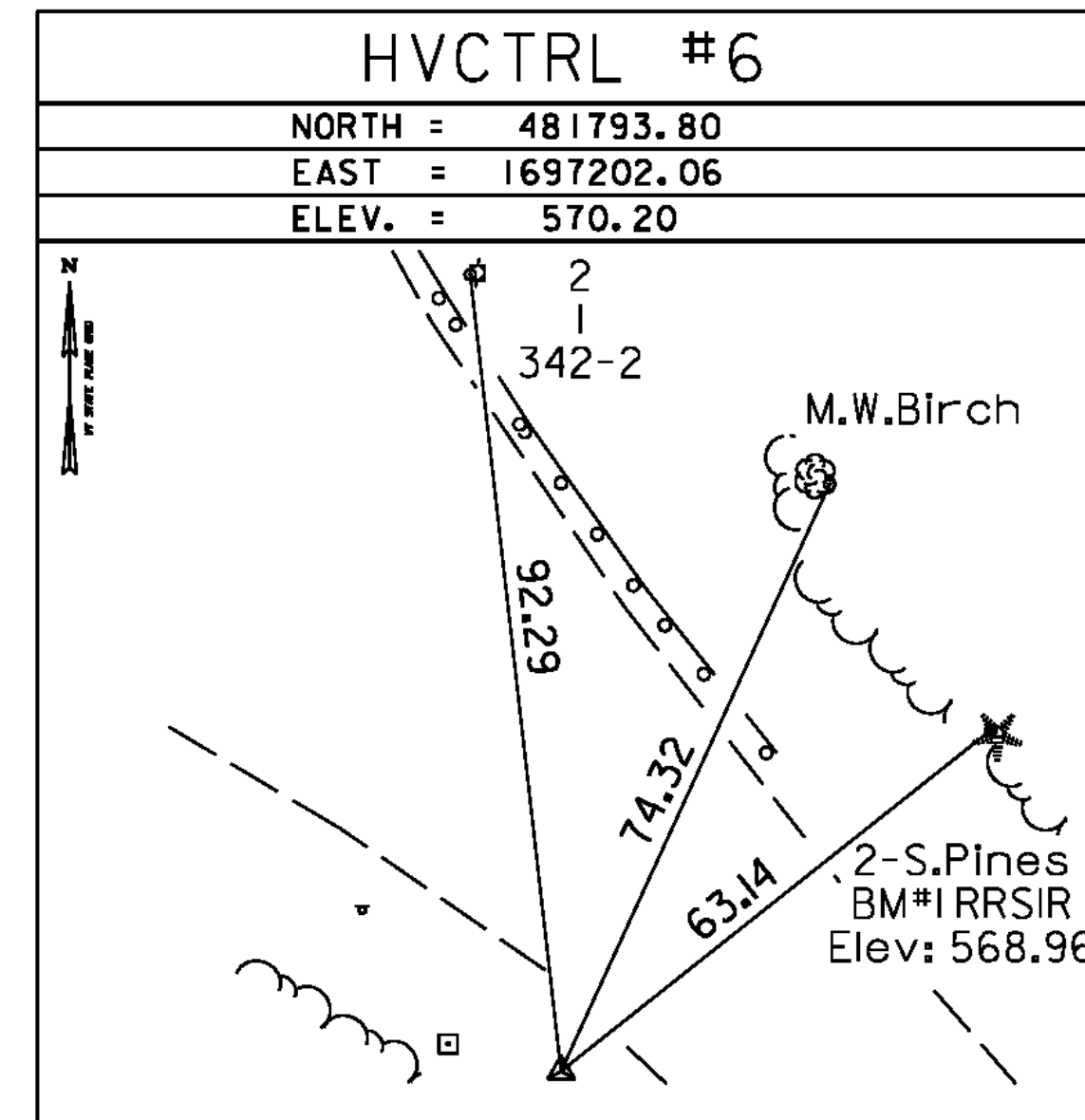
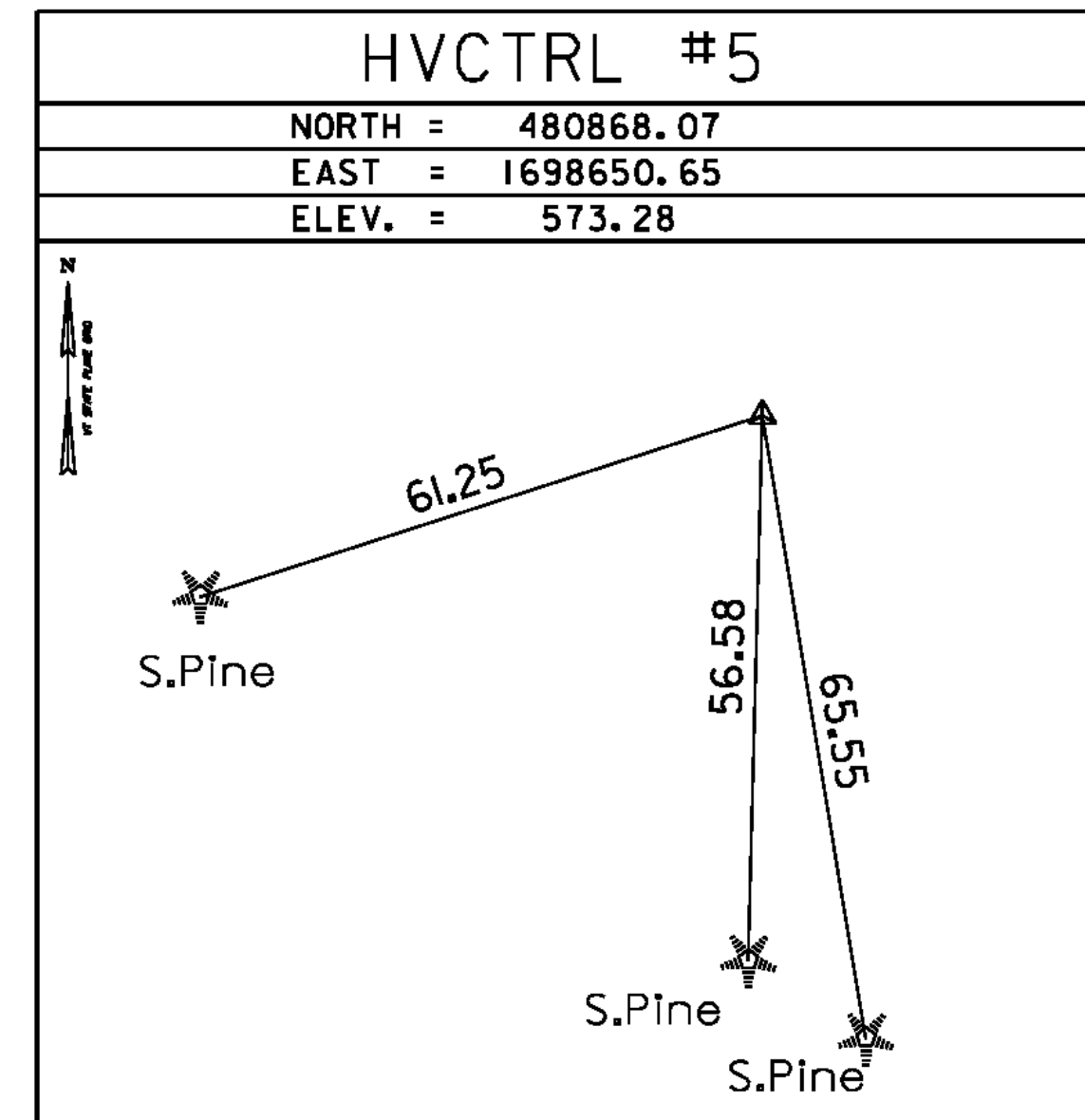
GENERAL LOCATION, THETFORD, VT., ON THE UNION VILLAGE DAM, ABOUT 11.5 MI (18.5 KM) NORTHEAST OF WHITE RIVER JCT, ABOUT 30 MI (48.3 KM) SOUTHEAST OF BARRE, AND ABOUT 2.5 MI (4.0 KM) NORTHWEST OF THE VERMONT/NEW HAMPSHIRE STATE LINE. OWNERSHIP, U.S. ARMY CORPS OF ENGINEERS, CONTACT GORDON PARKER, POST MILLS, VT. 05058. PHONE UNLISTED. TO REACH FROM THE INTERSECTION OF VT ROUTE 132 AND U.S. ROUTE 5 IN POMPANOSUC GO NORTHWEST ALONG VT ROUTE 132 FOR 2.0 MI (3.2 KM) TO A REVERSE Y INTERSECTION. BEAR RIGHT AND CONTINUE NORTH ALONG VT ROUTE 132 FOR 0.5 MI (0.8 KM) TO THE Y INTERSECTION OF ACADEMY ROAD RIGHT. BEAR RIGHT AND GO NORTHEAST ALONG ACADEMY ROAD FOR 0.6 MI (1.0 KM) TO UNION VILLAGE AND THE INTERSECTION OF A ROAD RIGHT TO A COVERED BRIDGE. CONTINUE STRAIGHT AHEAD AND GO NORTHEAST ALONG A PAVED ROAD FOR 0.1 MI (0.2 KM) TO A GATE TO THE UNION VILLAGE DAM RECREATIONAL AREA. PASS THROUGH GATE AND CONTINUE NORTHEAST ALONG PAVED ROAD FOR 0.2 MI (0.3 KM) TO THE U.S. ARMY CORPS OF ENGINEERS OFFICE AND MAINTENANCE BUILDING ON THE LEFT. CONTINUE STRAIGHT AHEAD, WINDING UPHILL ALONG PAVED ROAD FOR 0.3 MI (0.5 KM) TO THE TOP OF THE WEST END OF THE DAM. CONTINUE EAST ACROSS THE TOP OF THE DAM FOR 0.15 MI (0.24 KM) TO THE SITE OF MARK ON THE RIGHT, SET IN THE TOP OF THE EAST SIDE OF A 1.4 M (4.6 FT) X 1.5 M (4.9 FT) CONCRETE ACCESS STRUCTURE WITH STEEL LADDER. THE MARK IS 99.1 M (325.1 FT) WEST OF THE SOUTHWEST CORNER OF THE BRICK BUILDING AT THE EAST END OF THE DAM, 5.0 M (16.4 FT) SOUTH OF AND ABOUT LEVEL WITH THE CENTERLINE OF THE ROAD ON THE TOP OF THE DAM, 1.3 M (4.3 FT) SOUTH OF A STEEL BEAM GUARD RAIL, 0.7 M (2.3 FT) NORTH OF THE SOUTH EDGE OF THE CONCRETE ACCESS STRUCTURE, 0.1 M (0.3 FT) WEST OF THE EAST EDGE OF THE STRUCTURE, AND 0.16 M (0.52 FT) WEST OF A FIBERGLASS WITNESS POST.

HVCTRL #2

UNION VILLAGE AZ MK
 NORTH = 481748.59
 EAST = 1699661.60
 ELEV. = 709.25

GENERAL LOCATION, THETFORD, VT., ABOUT 13 MI (20.9 KM) NORTHEAST OF WHITE RIVER JCT, ABOUT 28 MI (45.1 KM) SOUTHEAST OF BARRE, AND ABOUT 4.5 MI (7.2 KM) NORTHWEST OF THE VERMONT/NEW HAMPSHIRE STATE LINE. OWNERSHIP, MATTHEW I. WIENCKE, RR 1 BOX 32, THETFORD CENTER, VT 05075. TO REACH FROM THE INTERSECTION OF VT ROUTE 132 AND U.S. ROUTE 5 IN POMPANOSUC GO NORTHWEST ALONG VT ROUTE 132 FOR 2.0 MI (3.2 KM) TO A REVERSE Y INTERSECTION. BEAR RIGHT AND CONTINUE NORTH ALONG VT ROUTE 132 FOR 0.5 MI (0.8 KM) TO THE Y INTERSECTION OF ACADEMY ROAD RIGHT. BEAR LEFT AND CONTINUE NORTHWEST ALONG VT ROUTE 132 FOR 3.4 MI (5.5 KM) TO THE INTERSECTION OF TUCKER HILL ROAD RIGHT, JUST NORTH OF THE VT ROUTE 132 BRIDGE OVER THE OMPOMPANOSUC RIVER. TURN RIGHT AND GO EAST ALONG TUCKER HILL ROAD FOR 0.6 MI (1.0 KM) TO THE INTERSECTION OF A FIELD DRIVE LEFT, JUST EAST OF A LARGE BRICK HOUSE, WOODEN ATTACHED BARN, AND 2 CAR GARAGE. OBTAIN PERMISSION FROM MR. WIENCKE AT THE HOUSE AND TURN LEFT THROUGH AN OPENING IN A STONE WALL AND GO NORTH ALONG FIELD DRIVE FOR ABOUT 130 M (426.5 FT) TO THE TOP OF THE EAST SIDE OF A SMALL BARE KNOB AND AND SITE OF MARK ABOUT 80 M (262.5 FT) NORTHEAST OF THE BRICK HOUSE. THE MARK IS 44.0 M (144.4 FT) EAST OF A LONE 70 CM PINE, 18.0 M (59.1 FT) SOUTHWEST OF A 30 CM APPLE, 34.6 M (113.5 FT) SOUTHEAST OF THE EAST EDGE OF THE MOST EASTERLY OF 2 LARGE BOULDERS, 8.0 M (26.2 FT) WEST OF A FLOWERING BUSH, AND 14.5 M (47.6 FT) SOUTHEAST OF A FIBERGLASS WITNESS POST. IT IS SET IN THE TOP OF AN ALUMINUM MONUMENT.

TRAVERSE TIES



* Main Traverse Completed 04/05/95 by R.Gilman & T.Morse

DATUM	
VERTICAL	NAVD 88
HORIZONTAL	NAD 83 (92)
ADJUSTMENT	Compass

PROJECT NAME: THETFORD	
PROJECT NUMBER: BHF 0177(9)	
FILE NAME: z08j174t1.dgn	PLOT DATE: 2/15/2012
PROJECT LEADER: M.A. COLGAN	DRAWN BY: R. BULLOCK
DESIGNED BY: VTRANS	CHECKED BY: VTRANS
TIE SHEET	SHEET 10 OF 78

