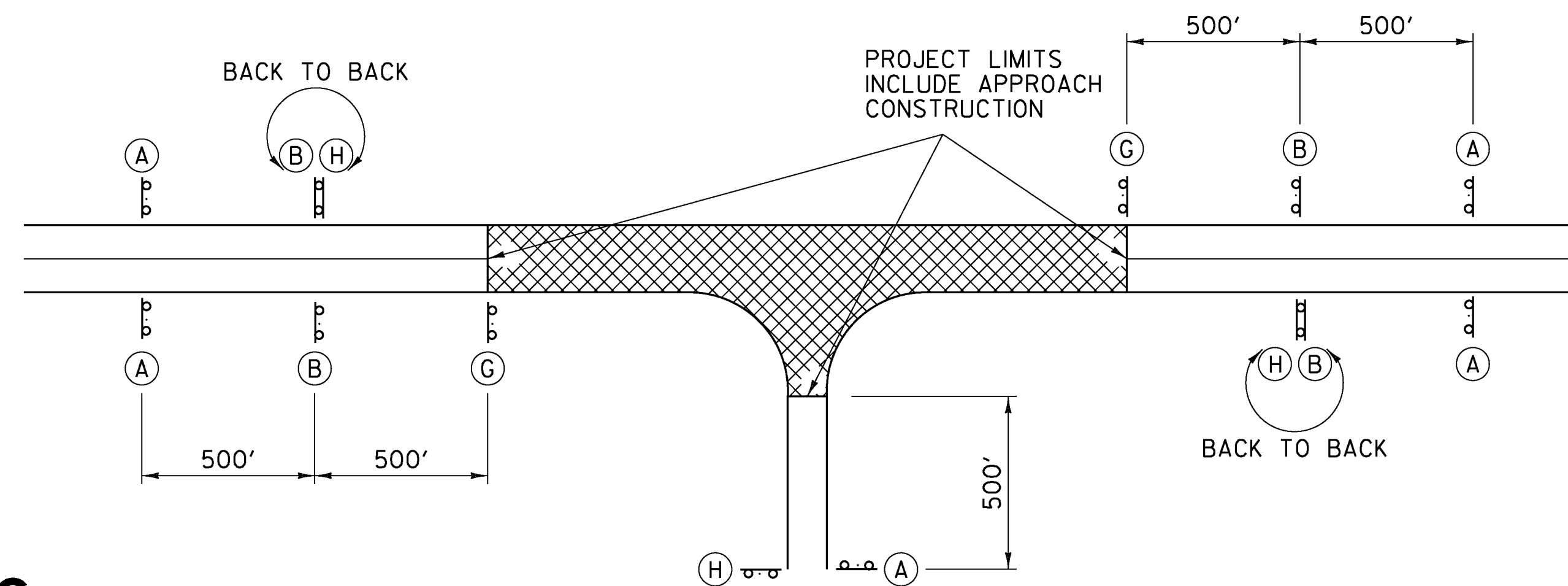
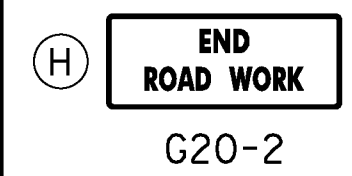
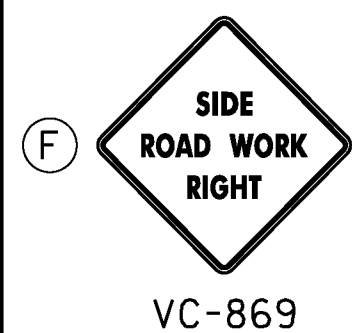
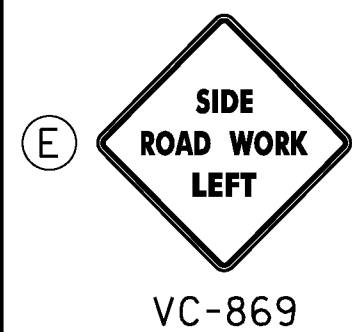
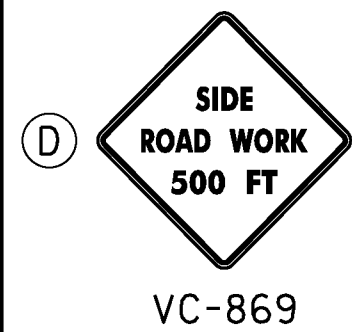
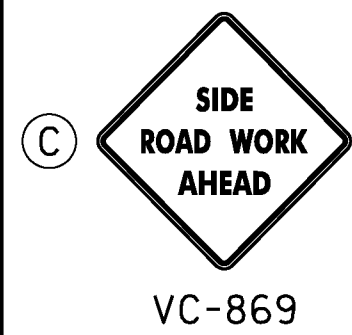
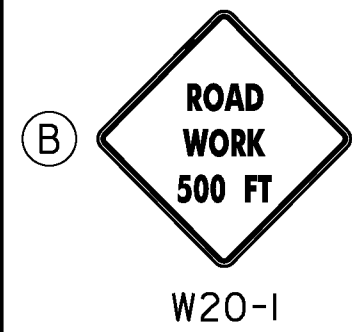
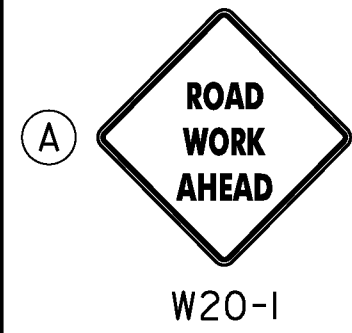
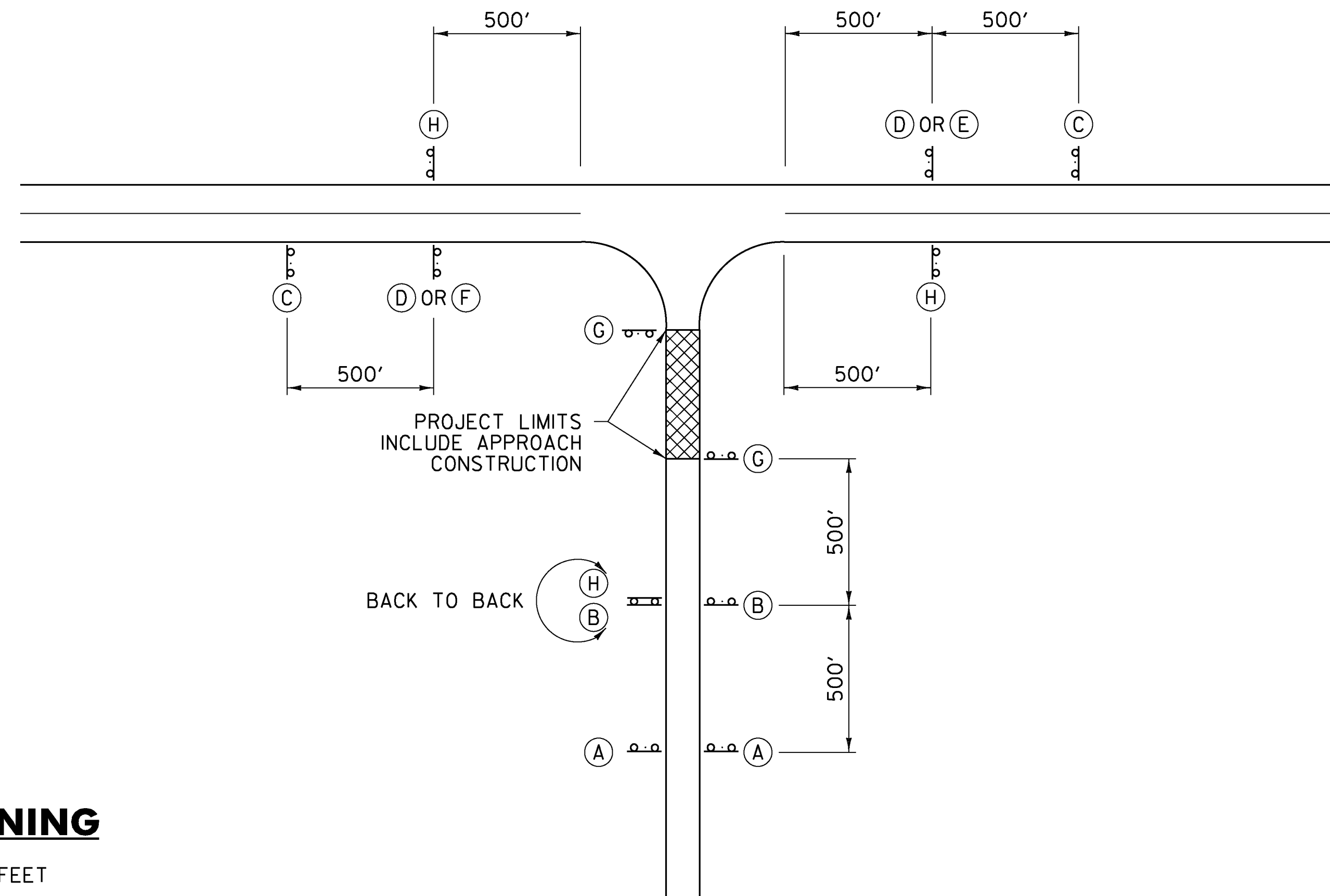


**LEGEND**



**TYPICAL APPROACH SIGNING**

FIELD CONDITIONS MAY DICTATE THE ACTUAL PLACEMENT.



**SIDE ROAD APPROACH SIGNING**

TO BE USED WHEN CONSTRUCTION IS UP TO 1000 FEET FROM THE INTERSECTION. FIELD CONDITIONS MAY DICTATE THE ACTUAL PLACEMENT.

**GENERAL NOTES:**

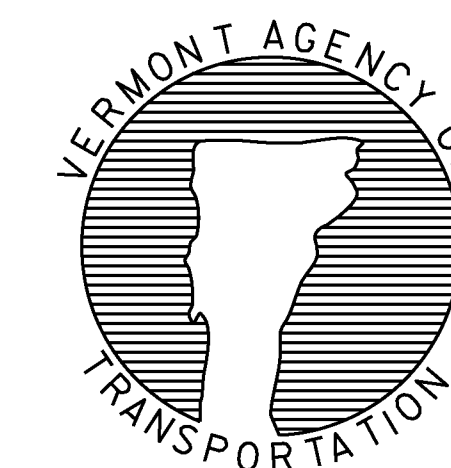
1. SIGNS SHOWN ON THIS SHEET ARE INTENDED FOR USE IN PROVIDING ADVANCE WARNING AND INFORMATION ON CONSTRUCTION PROJECTS OVER WHICH TRAFFIC WILL BE MAINTAINED. WHEN ADDITIONAL APPROACH SIGNS OR OTHER TYPES OF ADVANCE SIGNING OR CONTROL ARE NECESSARY, THE PLANS AND/OR THE SPECIFICATIONS FOR THAT PROJECT WILL GIVE THE DETAILS OF THE SIGNS AND DEVICES REQUIRED. FOR ON-PROJECT CONSTRUCTION SIGNS, REFER TO APPROPRIATE STANDARD SHEETS.
2. THE "ROAD WORK NEXT XX MILES" SIGN (G20-1) SHALL BE INSTALLED IN ADVANCE OF TEMPORARY TRAFFIC CONTROL ZONES THAT ARE MORE THAN TWO MILES IN LENGTH OR AS DIRECTED BY THE ENGINEER. DISTANCES SHALL BE STATED TO THE NEAREST WHOLE MILE.
3. SIGNS SHALL BE LOCATED AS DETAILED ON THIS SHEET OR AS OTHERWISE SHOWN ON THE PLANS. THEY SHALL APPEAR AT EACH END OF THE HIGHWAY UNDER CONSTRUCTION AND ON ALL INTERSECTING PUBLIC HIGHWAYS. THE ENGINEER SHALL DETERMINE THE EXACT LOCATIONS.

**OTHER STDS. REQUIRED: T-1, T-28**

REVISIONS AND CORRECTIONS  
AUG. 6, 2012 - ORIGINAL APPROVAL DATE

APPROVED  
*[Signature]*  
HIGHWAY SAFETY & DESIGN ENGINEER  
*[Signature]*  
DIRECTOR OF PROGRAM DEVELOPMENT  
*[Signature]*  
MARK D. RICHTER  
FEDERAL HIGHWAY ADMINISTRATION

**CONVENTIONAL ROADS  
CONSTRUCTION APPROACH  
SIGNING**



**STANDARD  
T-10**